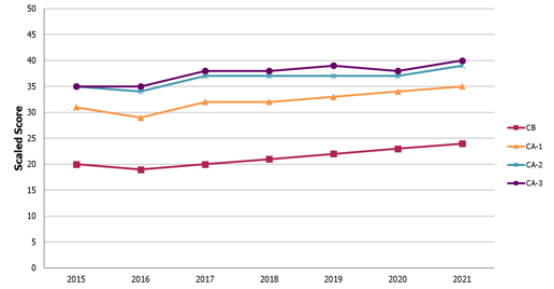


EXAM UPDATE

Mark T. Keegan
 Chair, ABA Assessments Committee

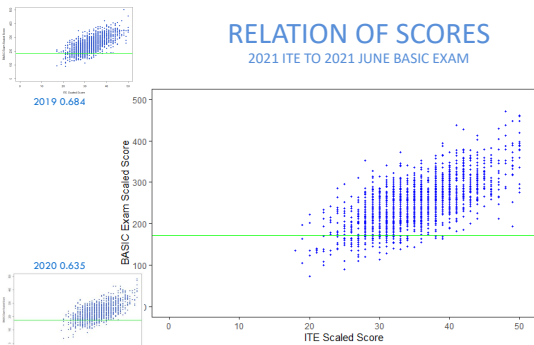
ITE PERFORMANCE

BY TRAINING LEVEL & EXAM YEAR



RELATION OF SCORES

2021 ITE TO 2021 JUNE BASIC EXAM



The correlation between the 2021 ITE scaled scores and 2021 June BASIC Exam scaled scores is 0.644, $p < 0.001$

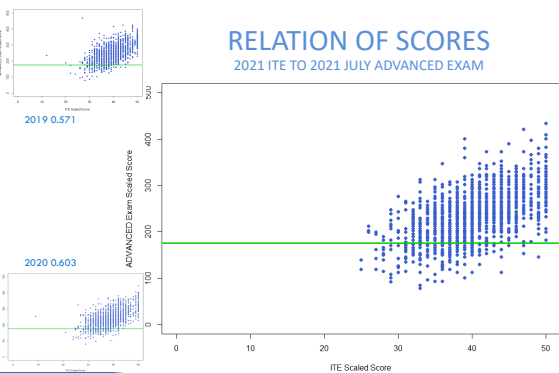
RELATION OF SCORES

2021 ITE TO 2021 JUNE BASIC EXAM

Scaled Score	Percentile Rank in CA1	N	2021 June BASIC Scaled Score Mean (S.D.)	BASIC Pass Rate
≤25	≤5	75	180(45)	57%
26-30	6-20	311	214(42)	84%
31-35	25-49	574	237(40)	94%
36-40	56-80	586	262(41)	98%
41-45	84-95	244	295(45)	100%
≥46	≥96	87	339(57)	100%

RELATION OF SCORES

2021 ITE TO 2021 JULY ADVANCED EXAM



The correlation between the 2021 ITE scaled scores and 2021 July ADVANCED Exam scaled scores is 0.547, $p < 0.001$.

RELATION OF SCORES

2021 ITE TO 2021 JULY ADVANCED EXAM

Scaled Score	Percentile Rank in CA3	N	2021 July ADVANCED Scaled Score Mean (S.D.)	ADVANCED Pass Rate
≤25	≤1	2	129(14)	0%
26-30	1-3	46	174(43)	52%
31-35	5-17	247	202(42)	72%
36-40	23-51	601	223(43)	87%
41-45	59-82	486	250(41)	96%
≥46	≥86	267	286(47)	99%

2021 JUNE BASIC EXAM RESULTS

- Key validation eliminated eight items in two forms
- Mean Scaled Score: 250.3
- Reliability: 0.85
- Pass rate breakdown:
 - First time-takers' pass rate: 93.6%
 - Second time-takers' pass rate: 81.8%
 - Third time-takers' pass rate: 66.7%

1,906
residents examined

93.1%
of residents passed

7

2021 JULY ADVANCED EXAM RESULTS

- Candidates were assigned to examine on Friday or Saturday
- Key validation eliminated 15 items in two forms
- Mean Scaled Score: 234.1
- Reliability: 0.75

1,807
candidates examined

87.1%
of candidates passed

8

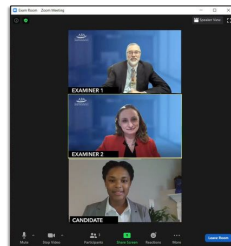
VIRTUAL APPLIED EXAM

SPRING 2021

- 1,651 candidates examined over nine weeks
- Not perfect, but professional and high quality
- Most candidates were satisfied
- 95 percent said we prepared them well for the virtual experience

FALL 2021

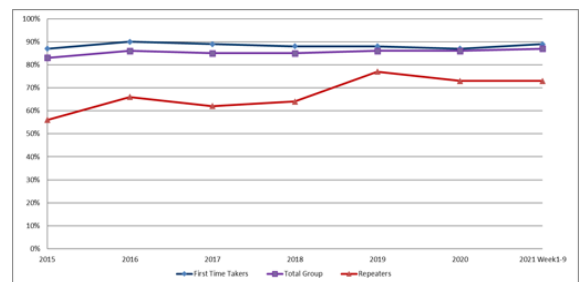
- More than 1,600 candidates scheduled from July to November
- Applying lessons learned in spring administration
- By Nov. 18, we will have examined all 2020 displaced candidates and the 2021 cohort



9

STANDARDIZED ORAL EXAM

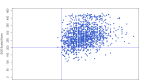
SUCCESS RATES (2021 WEEKS 1-9)



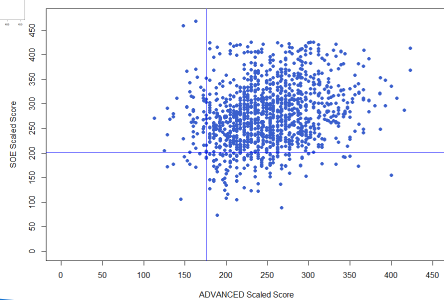
10

RELATION OF SCORES

2021 SPRING SOE TO FIRST ATTEMPT ON 2019 JULY ADVANCED EXAM



2019 SOE to first attempt on 2018 July ADVANCED Exam
0.284



The correlation between the 2021 SOE scaled scores and first attempt on 2019 JULY ADVANCED Exam scaled scores is 0.252, $p < 0.001$

11

2021 OSCE RESULTS (WEEKS 1-9)

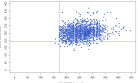
- Mean Scaled Score: 246.4
- Standard Deviation: 37.0
- 1,437 candidates took both SOE and OSCE

	OSCE: Fail	OSCE: Pass	Total
SOE: Fail	30 (2.1%)	181 (12.6%)	211 (14.7%)
SOE: Pass	38 (2.6%)	1,188 (82.7%)	1,226 (85.3%)
Total	68 (4.7%)	1,369 (95.3%)	1,437 (100%)

1,455
candidates took OSCE component

95.5%
of candidates passed OSCE component

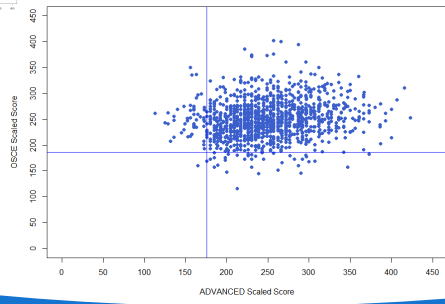
12



RELATION OF SCORES

2021 SPRING OSCE TO FIRST ATTEMPT ON 2019 JULY ADVANCED EXAM

2019 OSCE to first attempt on 2018 July ADVANCED Exam
0.190

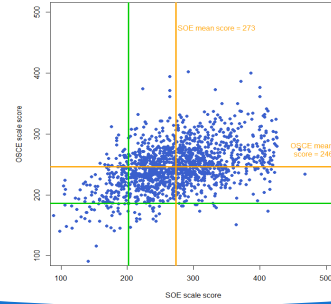


The correlation between the 2021 OSCE scaled scores and first attempt on 2019 JULY ADVANCED Exam scaled scores is 0.156, $p < 0.001$

13

RELATION OF SCORES

BETWEEN THE OSCE AND SOE COMPONENTS



The correlation between the 2021 spring OSCE scaled scores and 2021 SOE scaled scores is 0.467, $p < 0.001$

14



CONTACT INFO

- coms@theaba.org
- (866) 999-7501
- www.theaba.org
- 4200 Six Forks Rd., Suite 1100
Raleigh, NC 27609

15