



U.S. Department
of Veterans Affairs



Women Veterans Health Research in VA

Elizabeth Yano, PhD, MSPH

Susan Frayne, MD, MPH

Jennifer Strauss, PhD

Anne Sadler, PhD, RN



2017 National Women Veterans Summit
National Cyberseminar • November 2017





Overview of Session



- **Overview of VA women's health research**
 - Including VA capacity to accelerate delivery of evidence-based care for women
- **Overview of women Veterans using VA care**
 - Including VA's primary care workforce
- **Women Veterans' mental health research**
- **Servicewomen's deployment health**
 - Including updates on new research for women warriors



Time for Q&A



- **Questions may be posed throughout today's cyberseminar by typing in comment box**
 - We will work to answer questions at the end
 - If your particular question isn't addressed before the session concludes, we will work to email replies or connect you to someone who can answer your question
- **Views expressed do not represent positions or policy of VA or US government**
- **References are at the end of all four talks**



U.S. Department
of Veterans Affairs

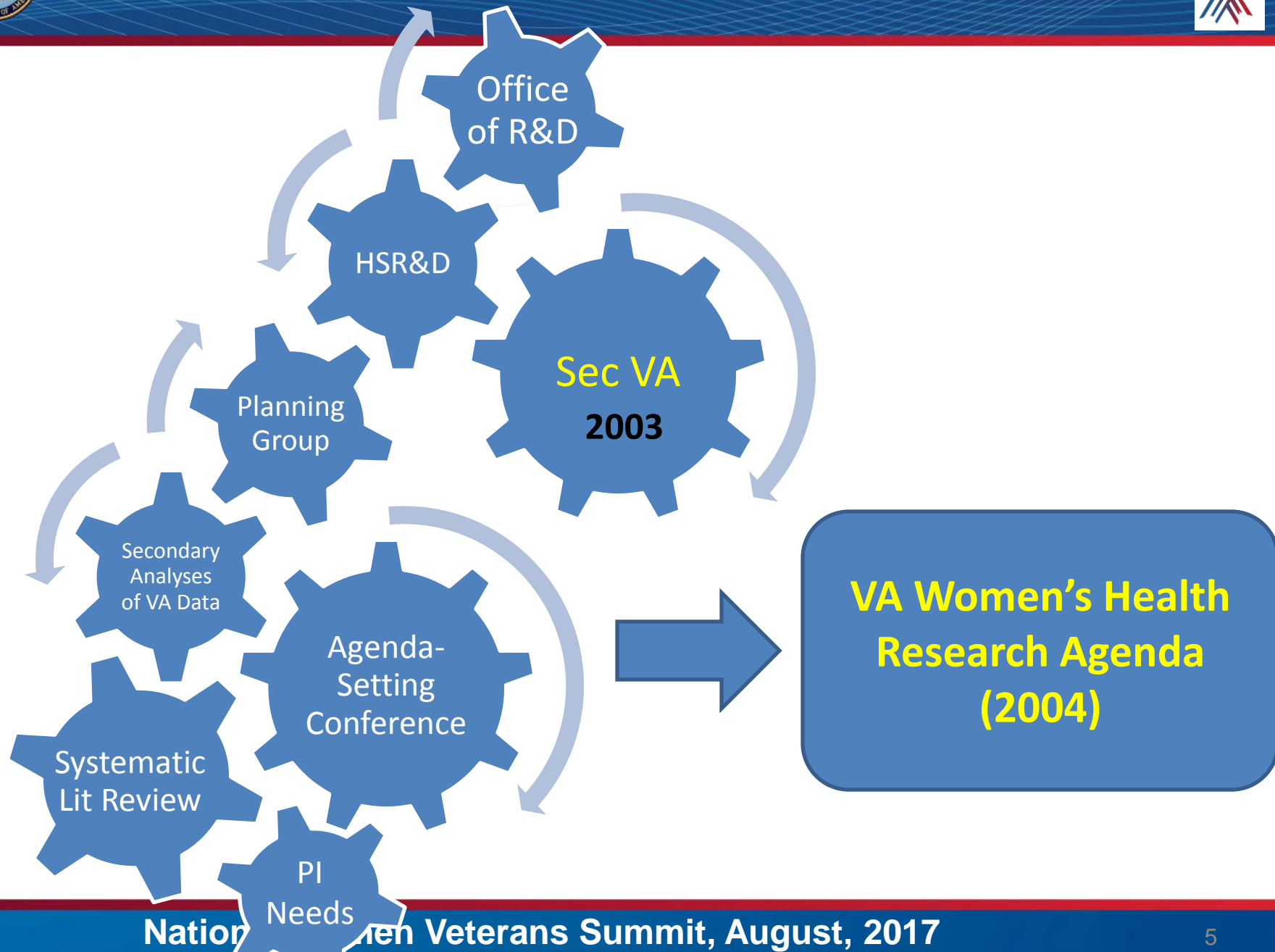
Overview of VA Women's Health Research

Elizabeth M. Yano, PhD, MSPH

Director, VA Women's Health Research Network (Consortium);
Director, VA Women Veterans' Healthcare CREATE Initiative;
Director, VA Los Angeles HSR&D Center for the Study of
Healthcare Innovation, Implementation & Policy; Adjunct
Professor, Department of Health Policy & Management,
UCLA Fielding School of Public Health



VA Women's Health Research Agenda





VA Women's Health Research Agenda



Biomedical/Lab
R&D

Clinical Sciences
R&D

Rehabilitation
R&D

Health Services
R&D



Infrastructure Group

Build capacity

(networking, collaboration,
mentoring, RFPs)

Address methodological limitations & barriers

(scientific review, technical
consults, interventions →
multi-site research/PBRN)

↑ **visibility/awareness**
(publication, dissemination,
communication, impact)



↑ # people
↑ # grants
↑ # papers



We documented the journey...



JGIM
Journal of General Internal Medicine

Volume 21 Supplement 3
March 2006

JGIM

VA Research on Women's Health

Guest Editors: Donna L. Washington, Elizabeth M. Yano, Ronnie D. Horner

EDITORIAL

**The Health and Health Care of Women Veterans
Perspectives, New Insights, and Future Research Directions**

JGIM

PERSPECTIVE

**Toward a VA Women's Health Research Agenda: Setting Evidence-based Priorities to
Improve the Health and Health Care of Women Veterans**

Elizabeth M. Yano, PhD,^{1,2} Lori A. Bastian, MD,^{3,4} Susan M. Frayne, MD, MPH,^{5,6} Alexandra L. Howell, PhD,^{7,8} Linda R. Lipson, MA,⁹ Geraldine McGlynn, MEd,¹⁰ Paula P. Schnurr, PhD,^{8,11} Margaret R. Seaver, MD, MPH,^{12,13} Ann M. Spungen, PhD,^{14,15} Stephan D. Fihn, MD, MPH^{16,17}

JGIM

The State of Women Veterans' Health Research

Results of a Systematic Literature Review

*Caroline L. Goldzweig, MD, MSHS,¹ Talene M. Balekian, MPH, DO,¹ Cony Rolón, BA,^{1,2}
Elizabeth M. Yano, PhD,¹ Paul G. Shekelle, MD, PhD^{1,2}*

¹Southern California Evidence-Based Practice Center, Greater Los Angeles VA Healthcare System, Los Angeles, CA, USA; ²RAND Health, Santa Monica, CA, USA.

JGIM

PERSPECTIVE

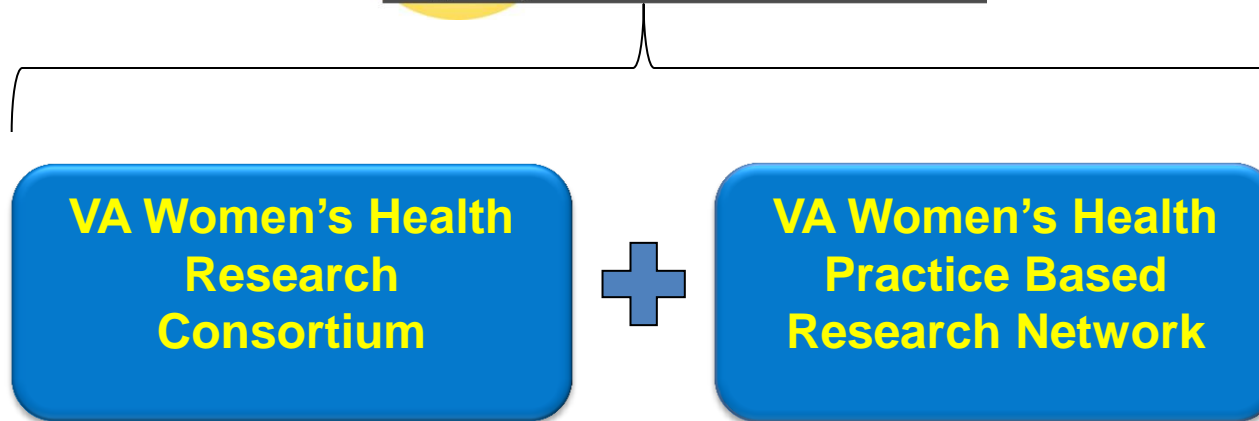
Women and War

What Physicians Should Know

*Maureen Murdoch, MD, MPH,^{1,2} Arlene Bradley, MD, FACP,³ Susan H. Mather, MD, MPH,⁴
Robert E. Klein, PhD, MA,⁵ Carole L. Turner, RNP, MN, CNAA,⁶ Elizabeth M. Yano, PhD, MSPH^{7,8}*



VA funded rest of infrastructure



- Training/education/mentoring
- Methods consultations/scans
- Collaborative research dev't
- Dissemination support
- Engage local clinicians, leaders
- Increase recruitment of women
- Enable multisite research
- Accelerate implementation/impact



↑ Focus on VA Health Care & Partnerships



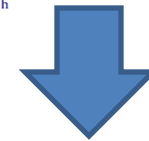
WOMEN'S
HEALTH ISSUES
www.whijournal.com



conference proceedings

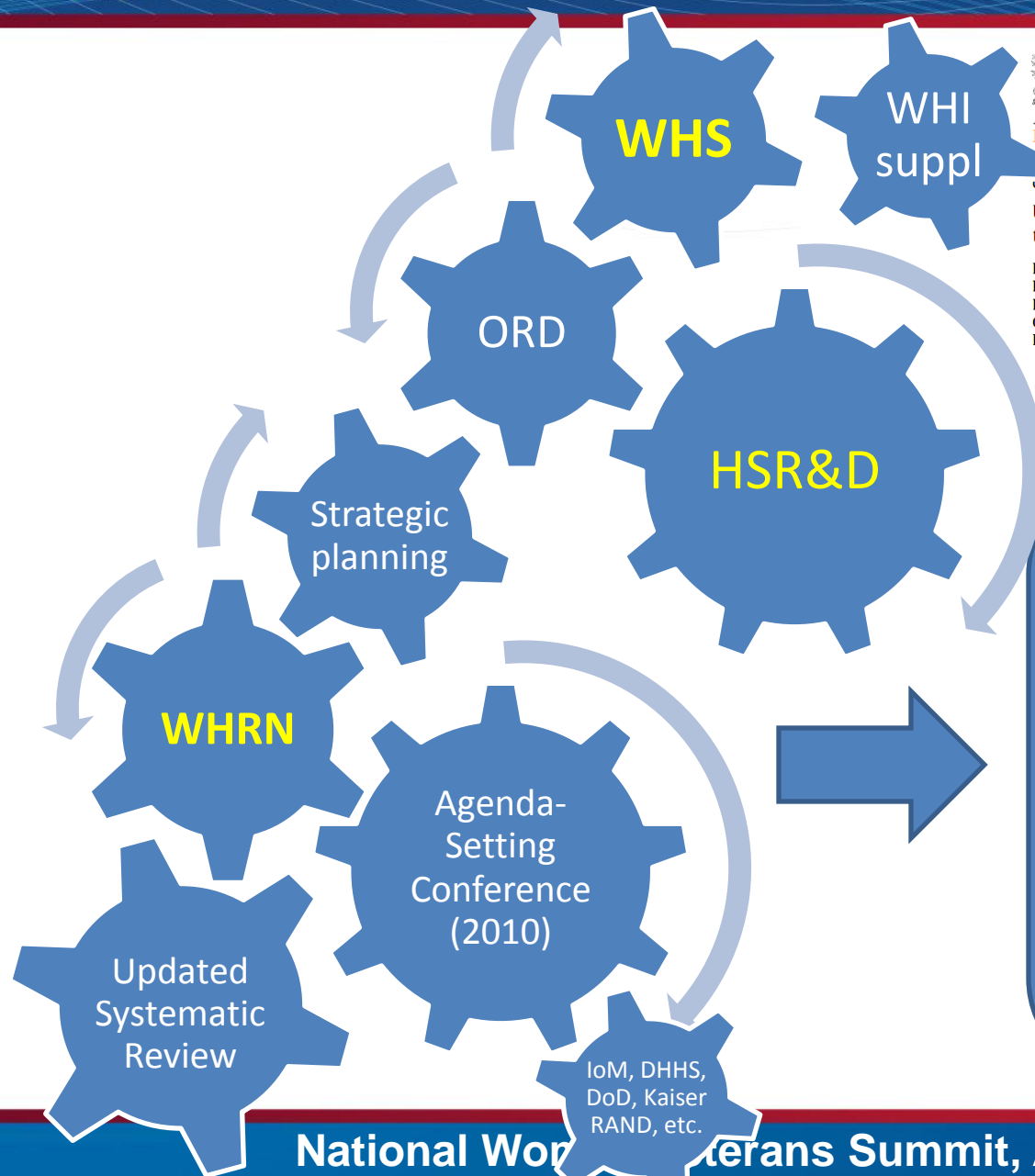
Using Research to Transform Care for Women Veterans: Advancing the Research Agenda and Enhancing Research–Clinical Partnerships

Elizabeth M. Yano, PhD, MSPH^{a,b,c,d,e}, Lori A. Bastian, MD, MPH^{d,e,f},
Bevanne Bean-Mayberry, MD, MHS^{a,d,g,h}, Seth Eisen, MD, MScⁱ, Susan Frayne, MD, MPH^{d,j,k},
Patricia Hayes, PhD^l, Ruth Klap, PhD^{a,b}, Linda Lipson, MAⁱ, Kristin Mattocks, PhD^{m,n},
Geraldine McGlynn, MEd^o, Anne Sadler, PhD^{p,q}, Paula Schnurr, PhD^{r,s},
Donna L. Washington, MD, MPH^{a,t,h}

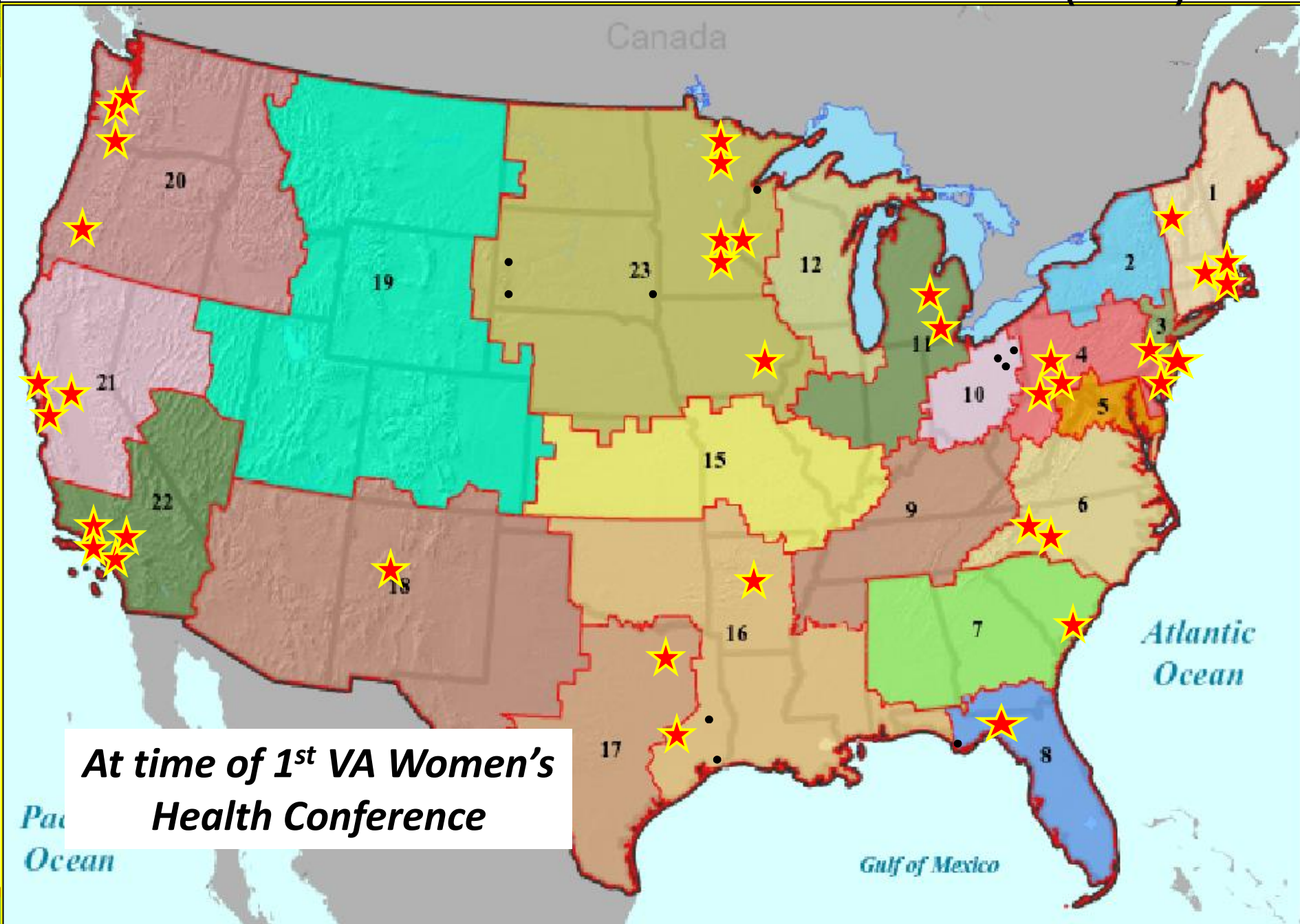


VA Women's Health Research Agenda (2011)

- Access/rural health
- Primary care/prevention
- Mental health
- Post-deployment health
- Reproductive health
- Complex chronic conditions/
long term care and aging

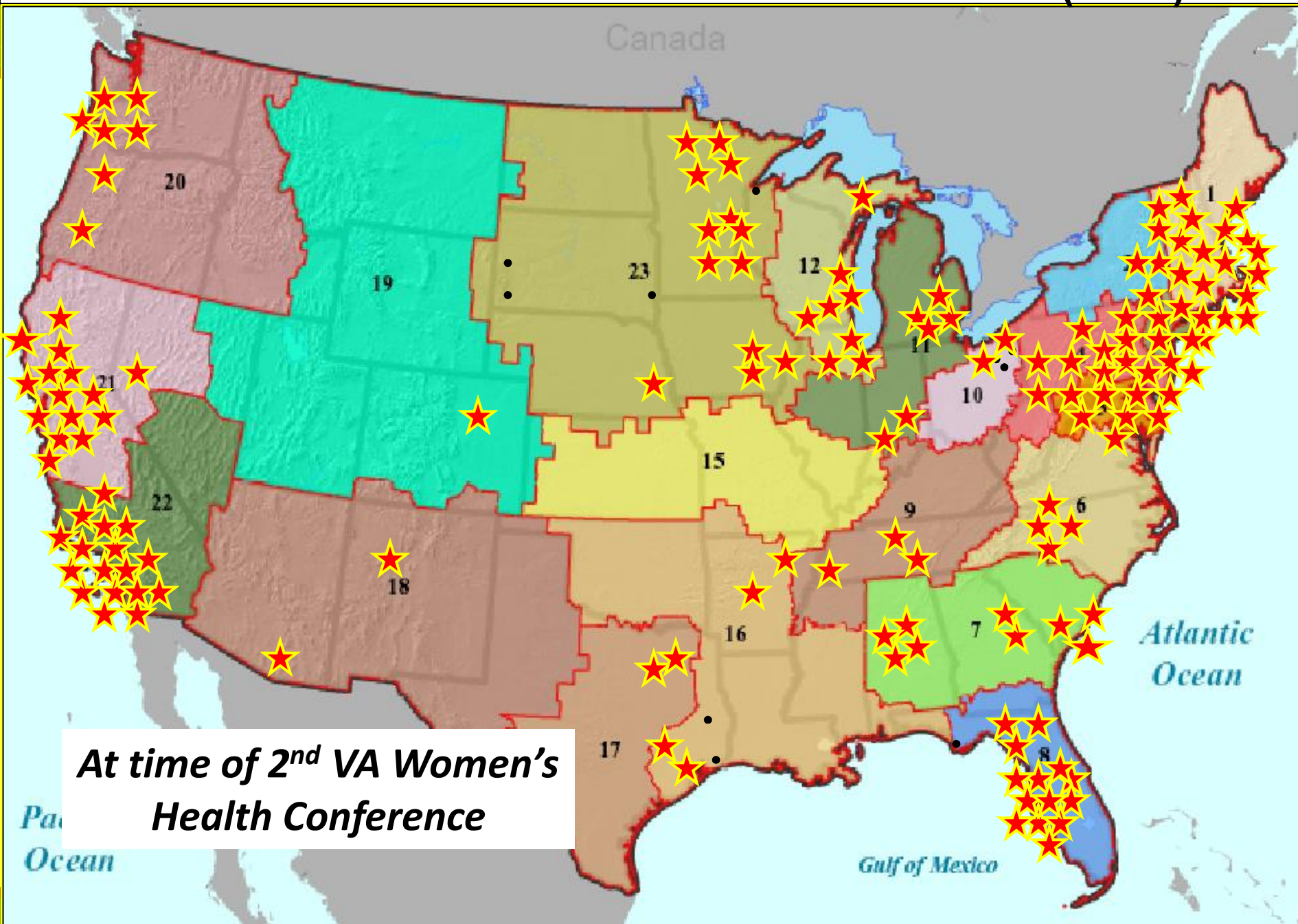


Number of VA Women's Health Researchers (2004)



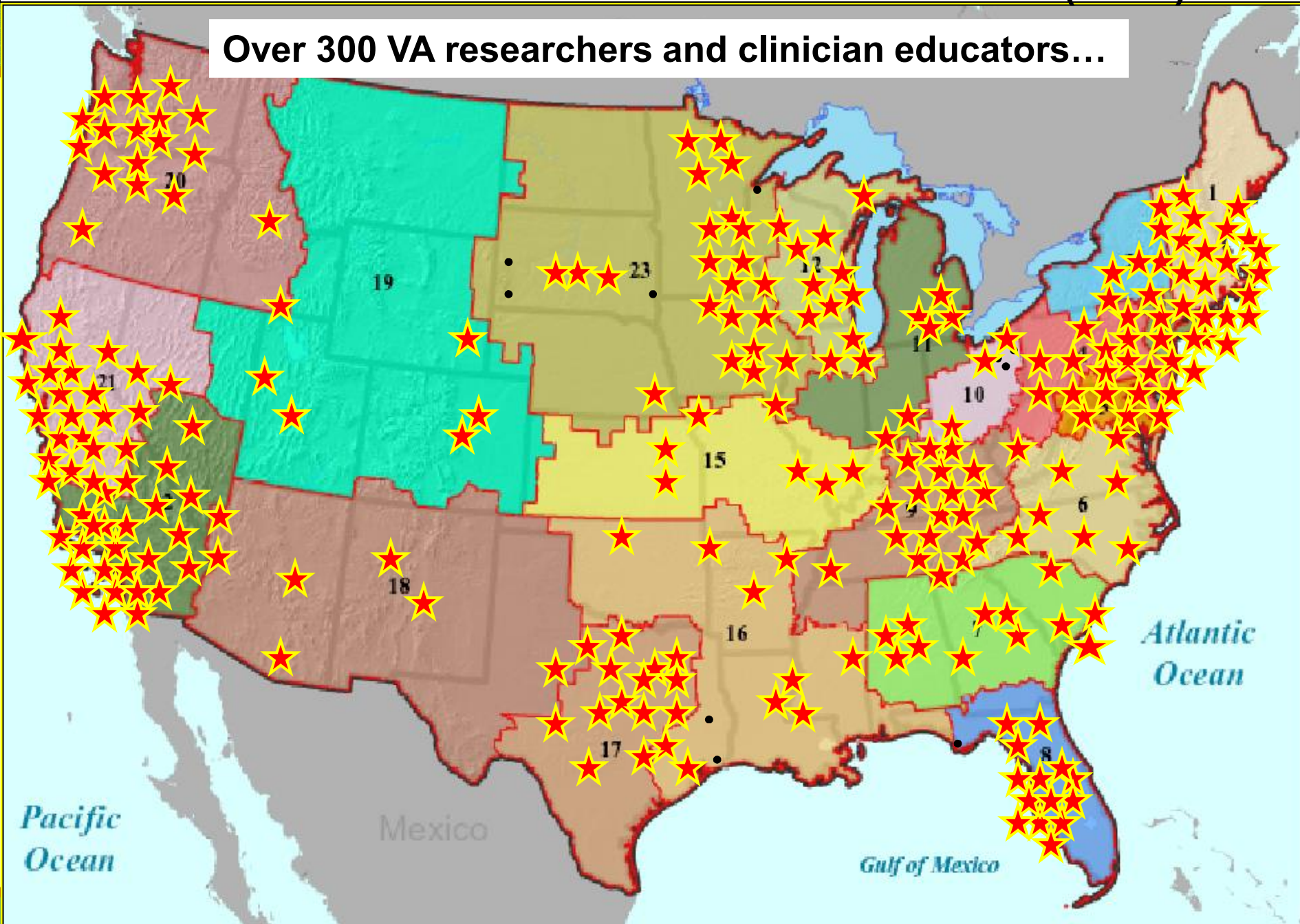
At time of 1st VA Women's Health Conference

Number of VA Women's Health Researchers (2010)



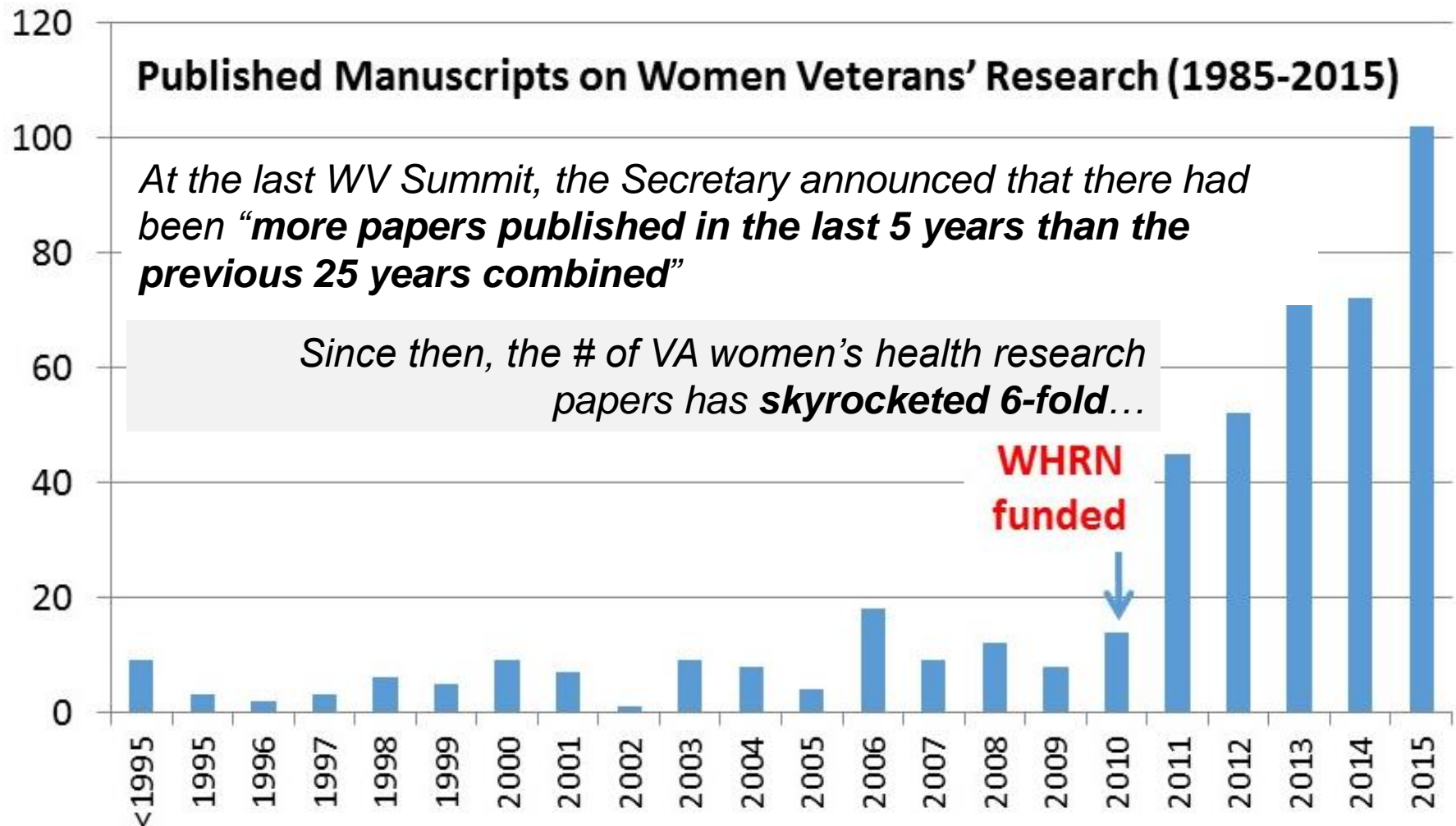
Number of VA Women's Health Researchers (2017)

Over 300 VA researchers and clinician educators...





Major ↑s in VA WH Research

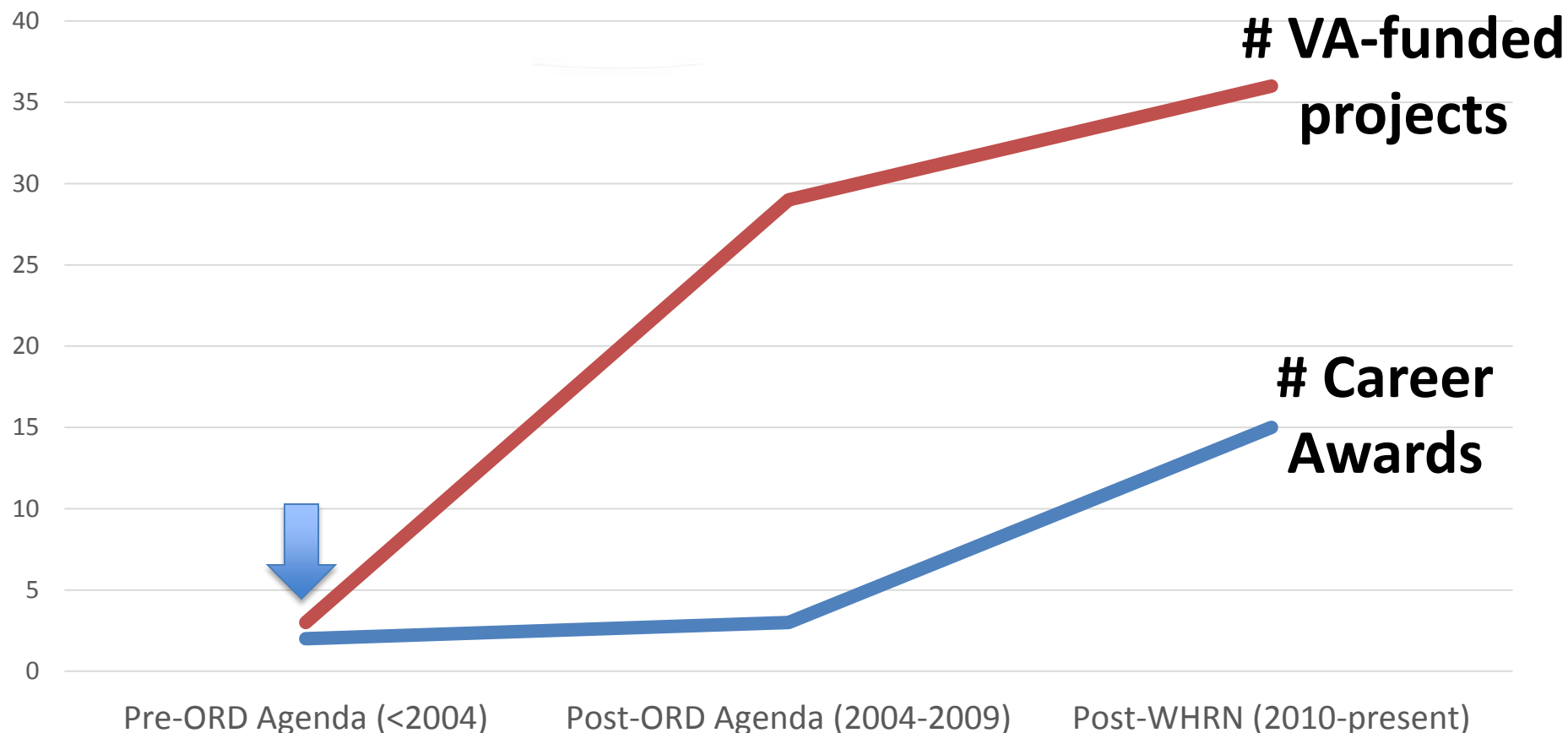




Major ↑s in VA WH Research



Growth in VA Women's Health Research



Tailoring primary care, primary care-mental health integration, cardiovascular risk reduction, Intimate partner violence, maternity care quality, work and family functioning, contraceptive use, substance use disorders treatment, post-deployment stressors, preconception care, use/attrition, MST, PTSD treatment, outsourced care, suicide prevention, etc.



VA investment in the future



- **VA women's health postdoctoral fellowships**
- **VA career development awardees (CDAs)**



- Smoking cessation, intimate partner violence, substance use disorders, MST, cardiovascular risk reduction, weight management, justice-involved Veterans, transgender health, preconception care, maternity care quality, diabetes management, homeless Veteran families, and more



New Initiatives



- **Developed WHRN to ↑ inclusion in VA research**
 - Gender differences in access, use, quality, satisfaction
 - Gender differences in intervention outcomes so care models work for women as well as they do for men
 - ↑ focus on women's health because we are different
- **Developed Women Veterans' CREATE Initiative**
 - Accelerate implementation of comprehensive care
 - Determinants of attrition, impacts of variations in comprehensive care options, Women's Health PACT, Gynecology SCAN-ECHO, quality of outsourced care
- **Developed the EMPOWER QUERI Program**
 - Engage WVs to gender-tailor PC-MH integration, CVD risk reduction and diabetes prevention programs



We are your research workforce



- **Clinicians**

- Primary care, women's health, psychiatry, psychology, obstetrics/gynecology, genetics, gastroenterology, cardiology, nursing, and more

- **Social scientists**

- Health services research, epidemiology, sociology, anthropology, social psychology, health policy, health economics, and more

- **Help us help you by letting us know your priorities, giving input on methods, and participating in research**