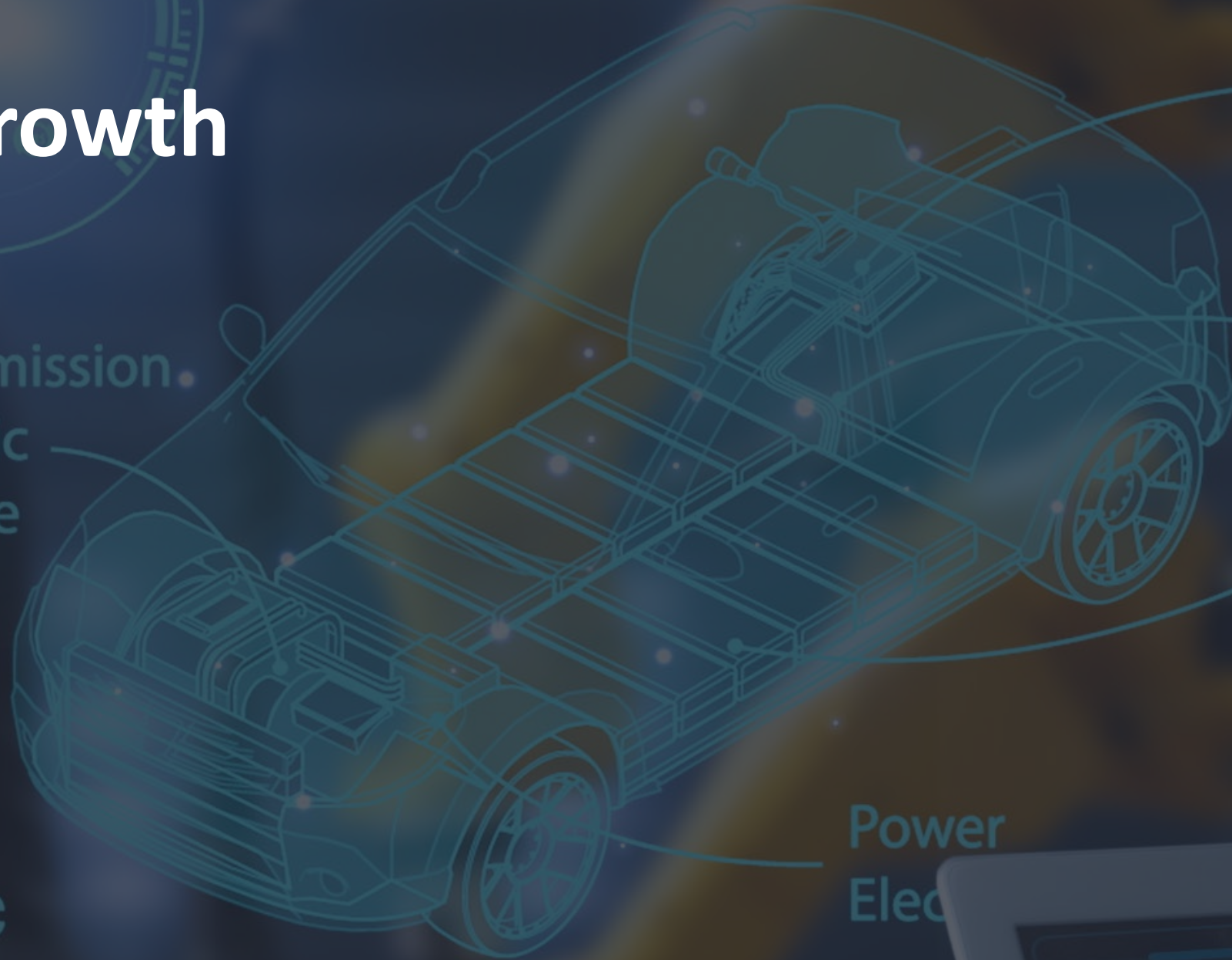




# Experienced Partners in Growth

AMENDI STEPHENS

February 20, 2024



Battery Management System

Electric Cable

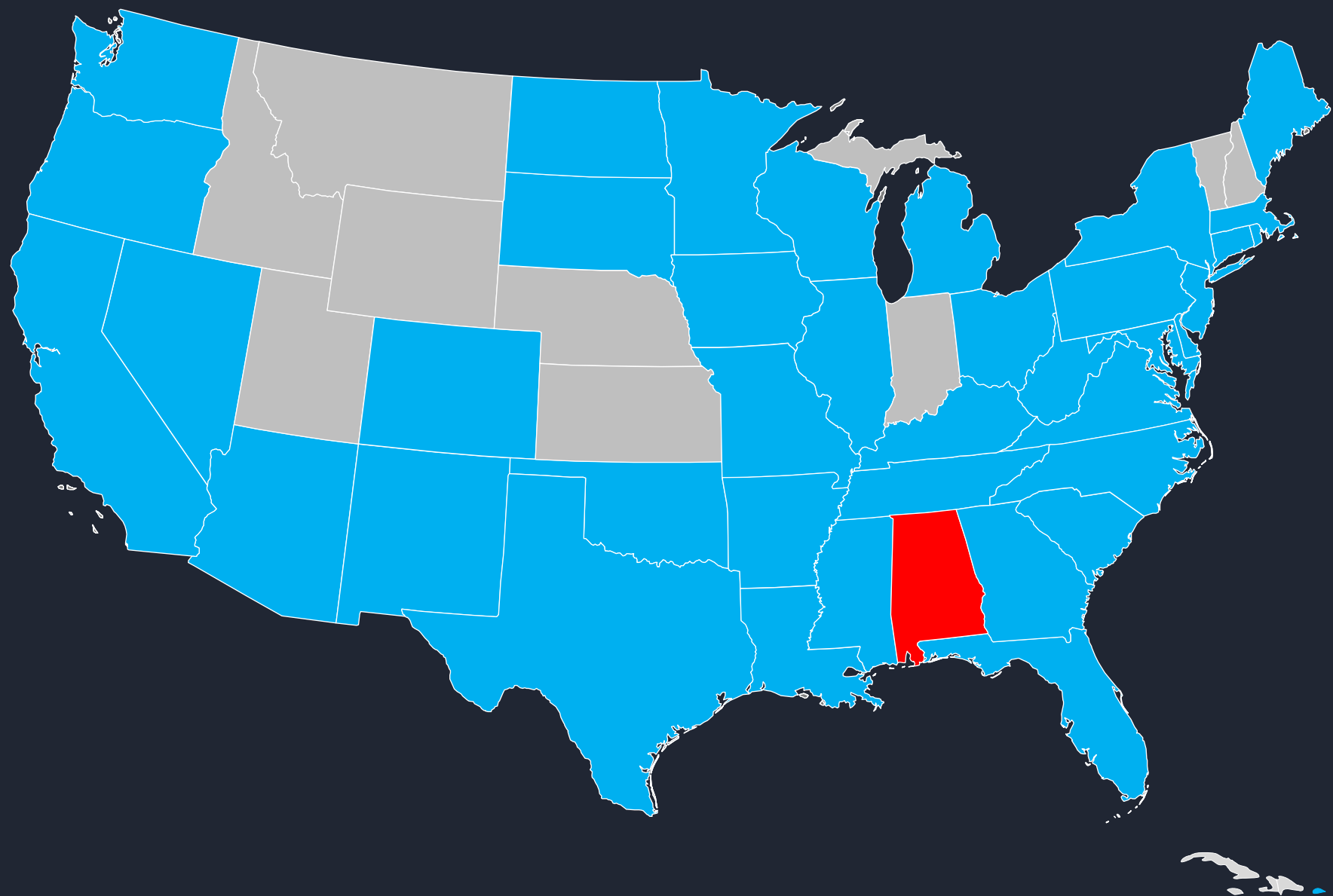
Battery Packs

Transmission  
Electric Engine

Power Elec

THE  
ELECTRIC  
VEHICLE


00110 00 1100 1  
00110 00 1100 1



Southern Company is a leading energy provider serving 9 million customers through its family of companies. Providing clean, safe, reliable and affordable energy with excellent service is our mission.

[www.southernco.com](http://www.southernco.com)



 <b>Alabama Power</b>	1.5 million electric utility customers
<b>Georgia Power</b>	2.7 million electric utility customers
<b>Mississippi Power</b>	192,000 electric utility customers
<b>Southern Power</b>	12,840 MW of wholesale solar, wind, natural gas and alternative clean technologies in 15 states
<b>PowerSecure</b>	A national leader in distributed infrastructure technologies
<b>Southern Nuclear</b>	An innovative leader among the nation's nuclear energy industry
<b>Southern Linc</b>	Wireless communications service
<b>Southern Telecom</b>	Wholesale dark fiber-optic solutions
<b>Southern Company Gas</b>	4.4 million natural gas distribution customer in 4 states, wholesale and retail energy businesses and gas storage facilities across the U.S.
	Nicor Gas (IL) Atlanta Gas Light (GA) Virginia Natural Gas (VA) Chattanooga Gas (TN)

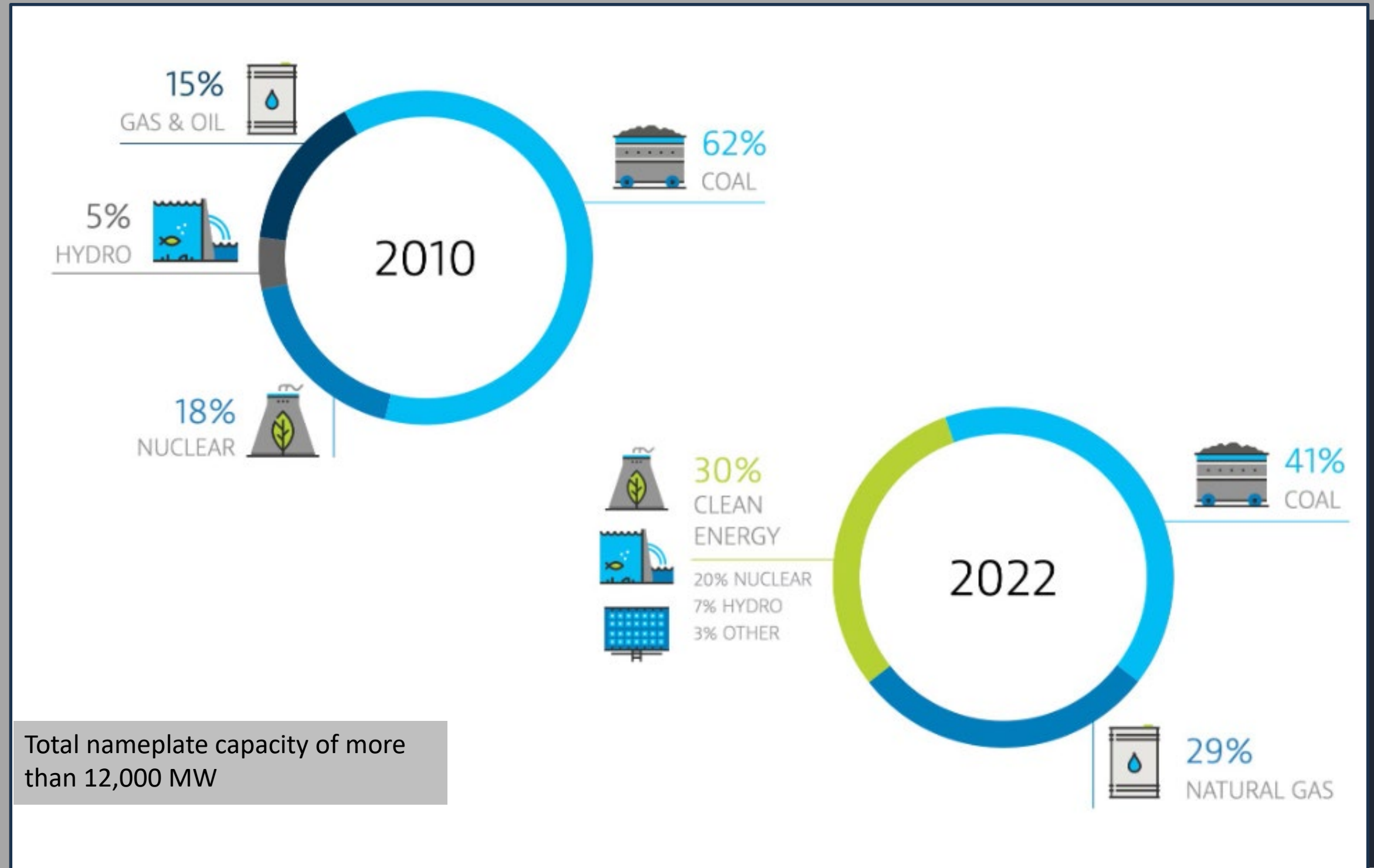


Nearly one-third of the electricity that serves our customers today is from clean fuel sources, and that number will continue to grow.

We are transforming the way we power Alabama through the diverse mix of energy sources we use to generate reliable electricity.

Our efforts are part of a larger clean energy strategy set forth by our parent company, Southern Company, which includes a goal of **net-zero carbon emissions by 2050**.

[www.alabamapower.com](http://www.alabamapower.com)



# Clean Energy Options

## RENEWABLE ENERGY CERTIFICATES (RECs)

Customer can purchase RECs (through Alabama Power) from an existing renewable facility.



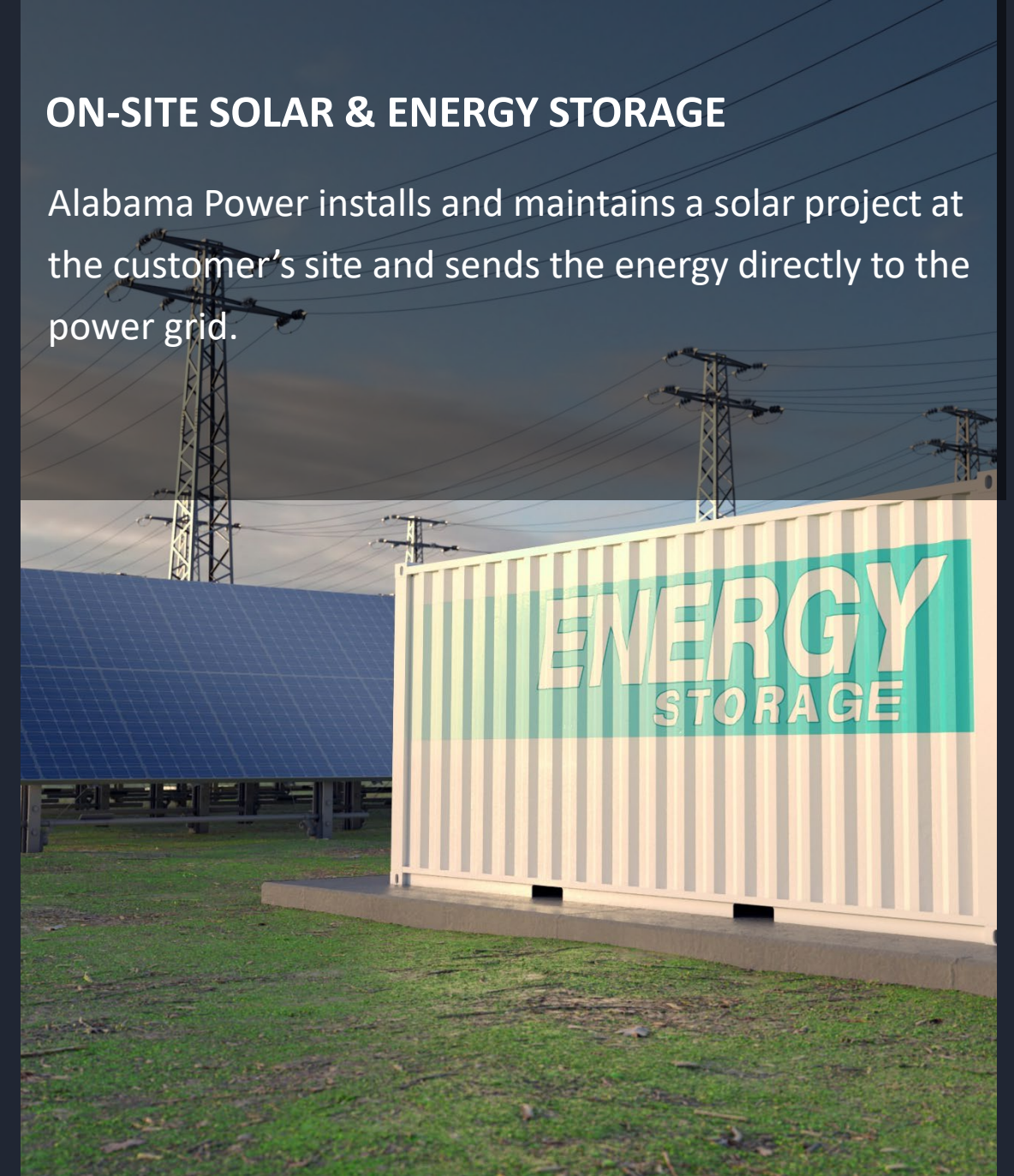
## UTILITY - SCALE SOLAR

Designed to help large commercial and industrial customers meet their renewable/sustainability goals by participating in the AL Power subscription program to financially supporting a utility scale solar project.



## ON-SITE SOLAR & ENERGY STORAGE

Alabama Power installs and maintains a solar project at the customer's site and sends the energy directly to the power grid.





Economic  
& Community  
Development

[www.amazingalabama.com](http://www.amazingalabama.com)



Site Identification



Site Due Diligence



Electrical Service



Workforce & Demographics



Tax and Operating Cost Analysis



Project Management



**1M**

Alabama automobile production of cars and trucks exceeds 1 million annually

**#2**

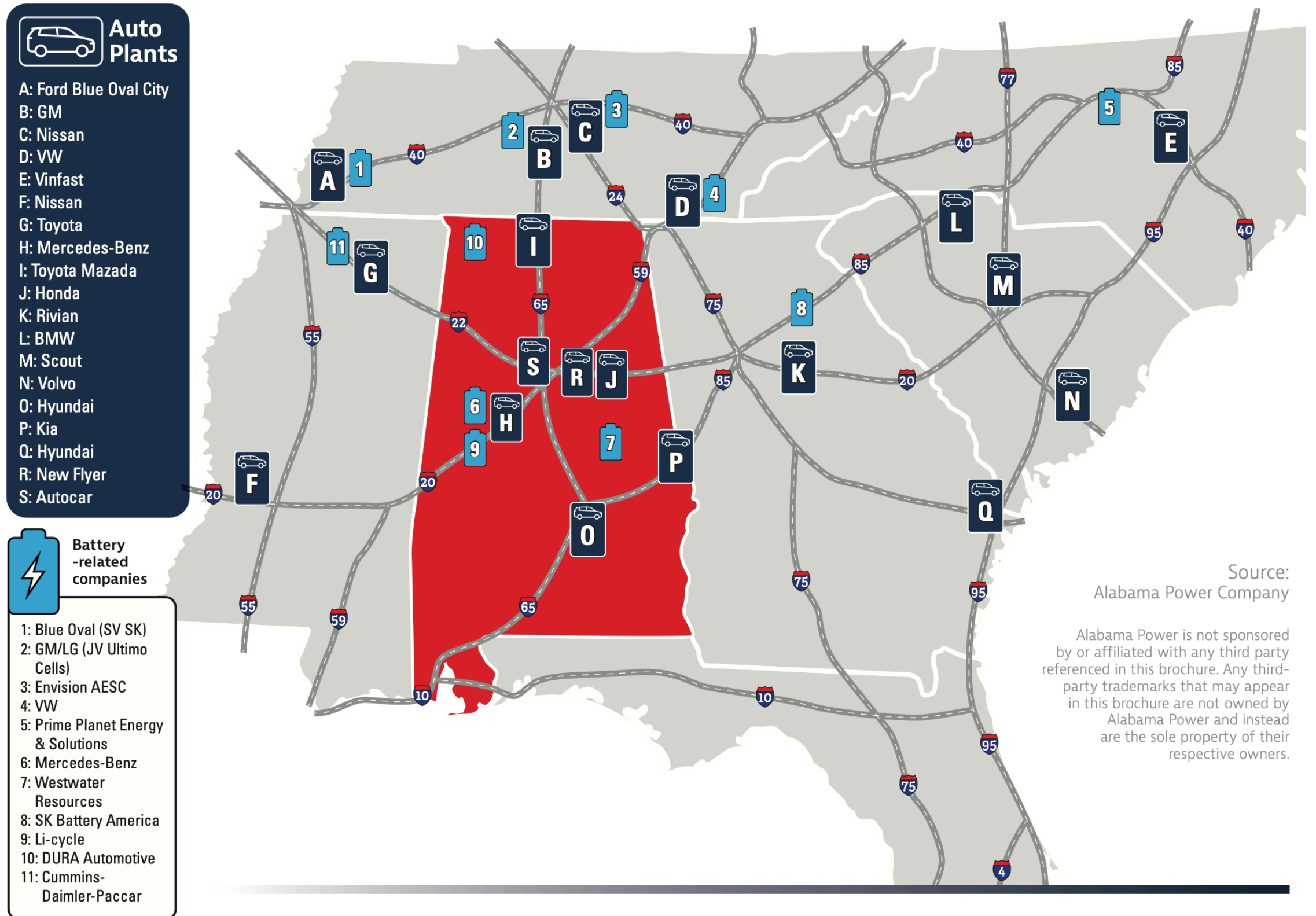
Alabama was the No. 2 motor vehicle exporting state in the U.S. in 2023

**\$8.9B**

Exports of Alabama - made vehicles and parts approached \$8.9 billion in 2022

## AUTOMOTIVE, ELECTRIC VEHICLE, AND BATTERY MANUFACTURING

Existing and Announced Facilities in the Southeast





**PORT OF MOBILE**  
ALABAMA PORT AUTHORITY



## INFRASTRUCTURE ADVANTAGES

### Alabama's Transportation Network

- 6 Interstates and 19 U.S. Highways
- 5 Class 1 Railroads, totaling more than 2,500 miles of rail
- 90 public airports and 5 cargo airports
- 11<sup>th</sup> largest U.S. port by tonnage



---

## ROBUST WORKFORCE

Site Selection magazine ranks Alabama #1 in 2023 Regional Workforce Development Rankings.



The AMP Center Smart Communities and Innovation Building

# The Alabama Mobility and Power Center (AMP)

*WORLD-CLASS RESEARCH & DEVELOPMENT HUB FOR CREATING AND SUSTAINING MODERN MOBILITY AND POWER TECHNOLOGIES.*



THE UNIVERSITY OF ALABAMA® | Alabama Transportation Institute  
Alabama Mobility and Power Center



Mercedes-Benz



Alabama Power

- Battery innovation
- Charging infrastructure
- Power delivery
- Education and workforce development
- Economic feasibility & environmental impact

# TEAM ALABAMA

## CONTACT US



**Hollie Pegg**  
Assistant Director  
Alabama Department of Commerce



Economic  
& Community  
Development



**Amendi Stephens**  
Industrial Business Development  
Alabama Power



**Mike Oatridge**  
Executive Director  
Alabama Mobility and Power Center



**Bakari Miller**  
VP, Business Development  
Economic Development  
Partnership of Alabama



**Kevin Taylor**  
Deputy Director  
Alabama Industrial  
Development and Training



**SCAN FOR MORE  
INFORMATION**