



HATCH

Introduction to
Battery Market Solutions
NAATBatt 2024 Conference
Carlsbad, CA
February 2024



EMPLOYEE-OWNED

partners who
think like owners

+12,000

professionals
worldwide

Projects in

150

countries

US\$75B

in projects

68 YEARS

of experience

We provide a full suite of services to solve industry's toughest challenges

Engineering



Project management and construction



Dynamic earth solutions



Advisory



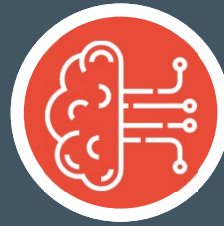
Strategic consulting

Community Engagement



Social performance

Digital



Digital products and services

Environmental



Permit planning & execution

Technologies

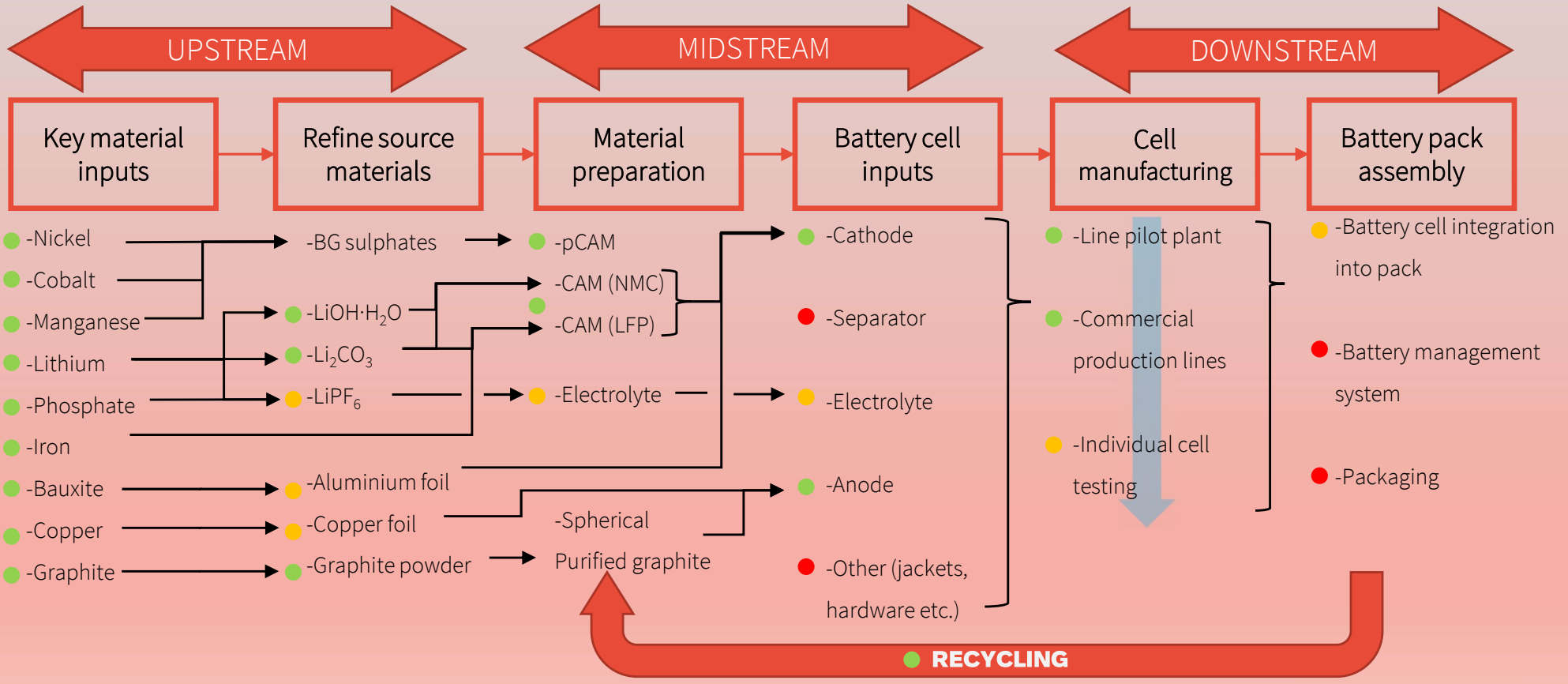


Hatch IP

Our capabilities span the battery value chain

Legend

- Core
- Emerging
- Non-core



Why Hatch?



Full suite of services in-house, from FEED to execution, from strategic advisory to technology development



The consulting engineering firm in North America with the **most advanced knowledge in CAM production.**



Largest presence of process engineers (who also understand battery materials) in North America.



Capabilities in scale-up and process optimization from multiple novel projects that we helped commercialize.



Significant knowledge in designing and executing projects in North America.

There simply is no better partner for engineering and project execution in this space!



+
Thank you.

For more information,
please visit www.hatch.com

Thomas Bibienne

(pCAM/CAM) & Battery Materials Specialist

+1 (819) 384-6939

thomas.bibienne@hatch.com

Evan House

Battery Cell Chemistry and Design Specialist

+1 (775) 225-1358

evan.house@hatch.com

Gerry Ayling

Principal, Hatch Advisory

+1 (872) 260-8800

gerald.ayling@hatch.com

Sandra Fleming

Battery Market Engineering Manager

+1 (778) 370-0073

sandra.fleming@hatch.com