

It's the end of the **ICE** age.



**Adaptive Applications for a Changing  
Automotive Industry**

[www.qad.com](http://www.qad.com)



### Direct Operations

18 Countries



### Revenue

~\$400m (FY22)



### Employees

~2000



### Battery Production

Supported since  
1995



### Customer Sites

7000+



QAD provides next generation manufacturing and supply chain solutions in 100+ countries



# OUR VISION

In an increasingly disruptive and turbulent world, manufacturers rapidly adapt to change and innovate for competitive advantage.



# Enabling The Adaptive Enterprise



**People**

Connecting &  
Empowering

**Process**

Delivering  
Intelligence

**Systems**

Enabling  
Adaptivity

# QAD Adaptive Applications for EV companies

## AI Process Intelligence

Process Mining

Monitoring

Enhancement

Predictive

Invoice Self Service

Supplier Management

Supplier Performance

Data Collection

Engineering

Production Scheduling

Enterprise Platform

Financial Management

Purchase Orders

**Integrated Supplier Management**

Auctions

Inventory Management

**Digital Manufacturing**

Production Execution

Embedded Analytics

**Effective Enterprise Management**

Mobile

EDI

Supplier Quality

Demand & Delivery

Production Orders

Warehouse Management

Asset Management

Internationalization

Process Maps

Data-lake

Service Contracts

CRM

Warranty

Document Control

Training

Complaint Management

Global Trade

Demand Planning

Distribution Planning

**Complete Customer Management**

Field Service Management

APQP/PPAP

**Quality Management**

NCR/CAPA

Integrated Business Planning

**Connected Supply Chain Management**

Sales Operations Planning

Configurator

Sales Quote

Sales Orders

Inspection/SPC

Risk Management

Audits

Transport Execution

Production Planning

Inventory Optimization

## Workforce Enablement

Productivity

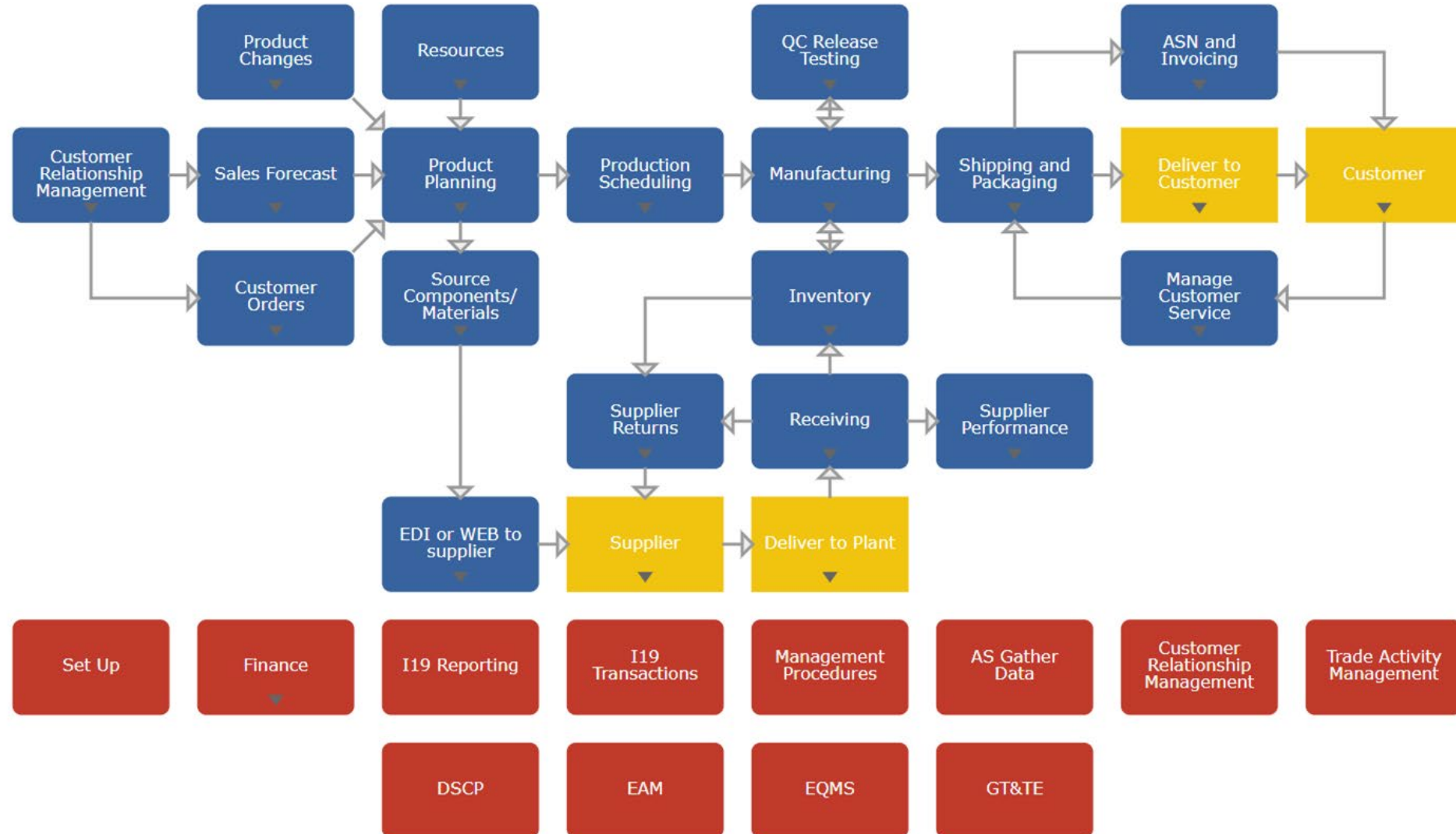
Compliance

Reliability

Learning

# Process Maps: Industry Specific - Rapid speed to benefit

Vertical	Compliance	Work Instructions	Training Material	KPI Metrics	Test Scripts
883	187	1800+	400+	117	1700+



# Rapid speed to benefit – OEM example

Go-Live Supplier Management, Onboard suppliers  
Training and Business Process Workshops

SOP Small Scale  
40 Vehicles to achieve ISO 9001

Neg

Start Sourcing

21st June

1st - 15<sup>th</sup> October

7th November

30th May

Contract Signature  
Project Initiation  
Setting up Cloud Environment

Building Integrations  
CRP/UAT

Go Live ERP Phase 1  
1 Sales Offices  
EQMS  
Contract Manufacturer

Phase 2

Procure and set up  
Manufacturing site

# Policy Journey to electrification

Ethiopia 2024

California 2035

EU 2035

UK 2030

Paris 2024

Norway 2025

Battery Passport

Ethical Supply Chain

EV Credit =  
Regionalization

# Policy Challenges affecting supply chain

100% Battery Component  
US 2029

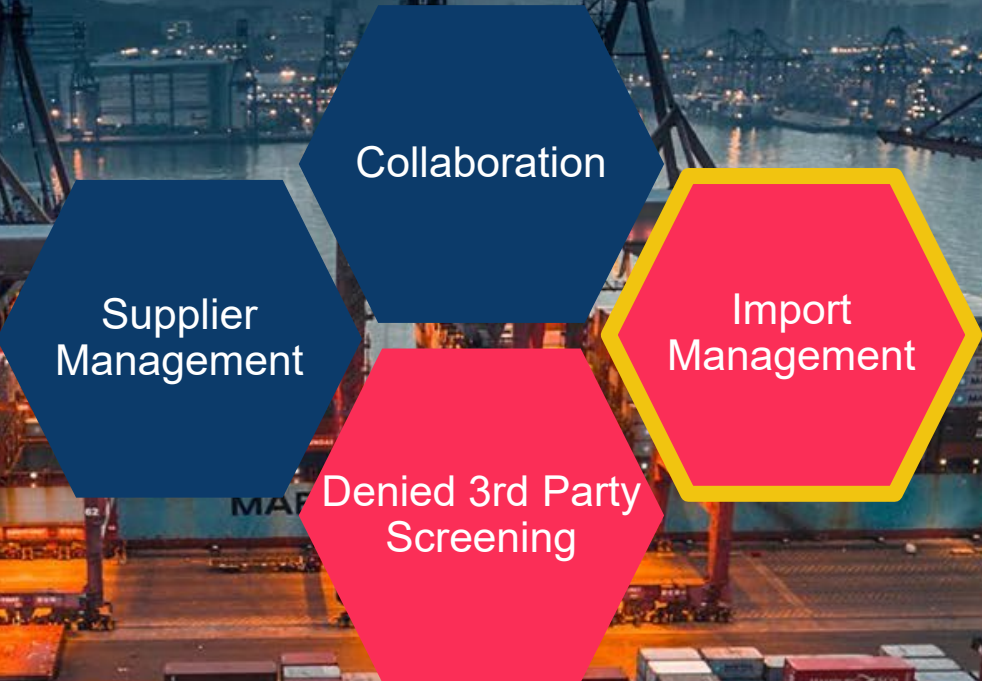
UFLPA / SCDDA

ESG - CCDA / CSRD

SB 253 - Emission  
Disclosure

SB 261 - Disclose Climate  
Related Risk

# Solution Overview - UFLPA / Forced Labor



 QAD Supplier Relationship Management

 QAD Global Trade

 Scope to be defined depending on current process


# Solution Overview - SB 253 + CSRD

## Report Scope 3 Emissions for all products



 QAD Supplier Relationship Management

 QAD Digital Supply Chain Planning

 QAD Global Trade Management - Scope to be defined depending on availability of data - Carbon Tracking

# Solution Overview - SB 253 / CSRD Climate Related Risk Disclosure



-  QAD Supplier Relationship Management
-  QAD Enterprise Quality Management
-  QAD Process Intelligence

A blue-tinted background image showing a robotic hand holding a microchip. The hand is positioned on the left side of the frame, and the chip is held in its palm. The chip has a grid of gold pins on one side and a square silicon die in the center. The background is a blurred image of a robotic arm or hand, suggesting a high-tech or manufacturing environment.

# Thank You

Andreas Bareid - Head of eMobility

[ab4@qad.com](mailto:ab4@qad.com)

805 755 9007

