



Minerals Traceability & Battery Passport Solution

FOURTEENTH ANNUAL MEETING & CONFERENCE

NAATBatt 2023 CHARGING AHEAD

Feb. 20223 *Document Purpose - to provide a high level overview of the Everledger Minerals and EV Battery Passport Solution for NAATBatt 2023 Member Update Presentation*

STRICTLY CONFIDENTIAL



Everledger Platform

Everledger TRACTION

DATA ACQUISITION

> 3 million

Assets on Platform across 4 verticals

- Minerals & batteries
- Diamonds, gemstones & jewelry
- Apparel & luxury
- Wines & spirits

> 10 x

Growth in Assets on Platform over 12 months

PLATFORM REACH

> 6 million

Visits per month including partner ecommerce sites

> 3.5 million

Unique visitors per month including partner ecommerce sites

SCALE & CHANNEL

3 Multi-million

National traceability program mandates

Cross-chain integrations

SAP & Mastercard provenance chain data

EV BATTERY CIRCULAR ECONOMY? - - IT TAKES

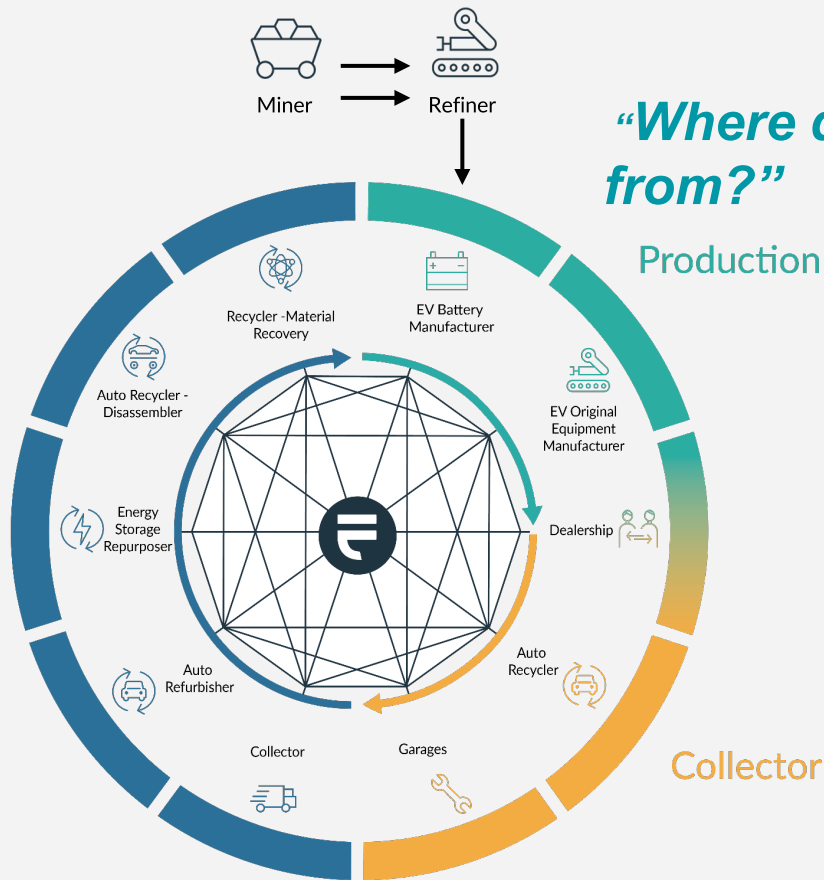
A VILLAGE!

“Where is it going?”

“Where did it come from?”

Battery Life Cycle Extension & Resource Recovery

“What’s happening to it?”



“Who has it?”

The Battery Passport

What is the Battery Passport? Status?

The globally recognized name for a digital twin of a physical battery that conveys information about all applicable sustainability and lifecycle attributes & requirements and is based on a comprehensive definition of a sustainable battery.

- What's in the battery?
- Where did the materials come from?
- Compliance with human rights & child labor standards and regulations and greenhouse gas accounting requirements

What is the

By name or by definition, battery supply chain traceability and sustainability are key requirements of:

- American Battery Materials Initiative
- US Inflation Reduction Act
- Securities & Exchange Commission
- European Battery Regulation
- German Supply Chain Due Diligence Act
- ... more to come

Battery Minerals Traceability: Where are we?

Everledger Battery Critical Minerals Pilots

What we've done:

August '21 - May '22: \$3MM **Critical Minerals Blockchain pilot** for Australian Government

- **Purpose:** To enhance productivity and competitiveness of Australian critical battery minerals using blockchain
- **Project:** Leveraging blockchain to reduce regulatory burdens for miners of all sizes by enabling sharing of compliance data with multiple regulators at once. This was completed successfully with involvement of dozens of battery supply chain participants.

Much more to come from AU:

- Critical battery minerals processing plants
- Mega factory for battery production
- Mining and processing of cobalt and nickel and minerals for vanadium, zinc bromine and iron flow batteries

Battery Lifecycle Management: Where are we?

Everledger Battery Passport Pilot

EVERLEDGER



Everledger launched the first ever Battery Passport pilot in September 2022 with **Ford Motor Company**. Participants include **Cirba Solutions**, **LiCycle**, **BBB Industries** and **SNT**

Demonstration: Provide Ford with visibility on out-of-warranty and end-of-life batteries when recyclers take custody for evidence of recycling

Timeline: Will wrap up end of February '23, followed by a report of findings

Next steps: Funding for additional pilots being sought to trial with other lifecycle stakeholders such as auto recyclers, auction houses, independent garages and others that engage and manage the battery throughout its lifecycles. A solution involving all participants is will be required.



NAATBatt & the Battery Passport

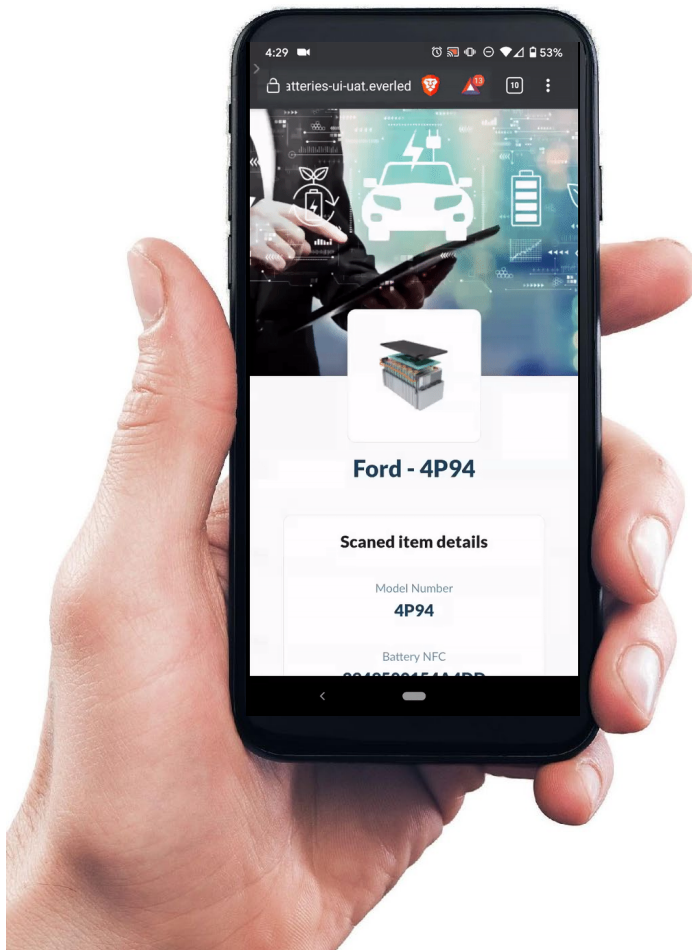
What can NAATBatt do?

NAATBatt IS the village and can leverage its membership and resources to advance a sustainable battery industry:

- Proactively engage with regulators globally
- Develop consortiums to secure funding for pilots to advance supply chain and battery lifecycle solutions

What can NAATBatt Members do?

Join the NAATBatt Track and Trace Committee to discuss your needs and help influence battery traceability globally





Contact us:

Lauren Roman - Business Director

Metals & Minerals Ecosystems

Lauren@everledger.io

+1 973 224 7632

everledger.io