



NAATBatt Presentation

February 2022

Non-Confidential

LICY

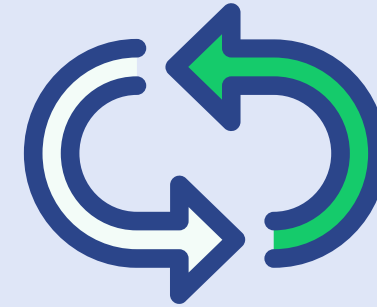
LISTED

NYSE



VISION

To be the most sustainable, vertically integrated,
and globally preeminent lithium-ion battery
resource recovery company



MISSION

Providing sustainable and safe customer-centric
solutions and technology to solve the global end-
of-lifecycle lithium-ion battery
problems/opportunities

Meeting the rapidly growing demand for critical
battery materials

RECYCLING SUPPLY CHAIN: LI-CYCLE'S 2-STEP PROCESS

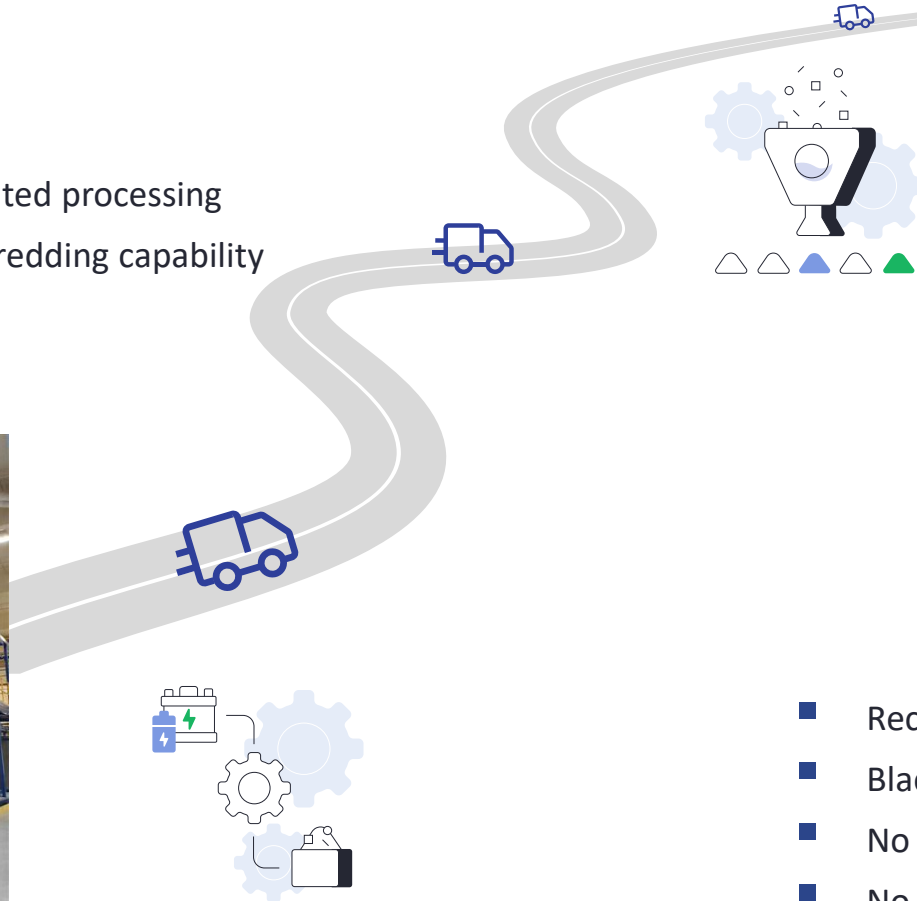


Streamlined, efficient, closed-loop, up to 95% recovery rate



Spoke Technologies

- No sorting
- No discharging
- Mechanical shredding
- Automated processing
- Pack shredding capability



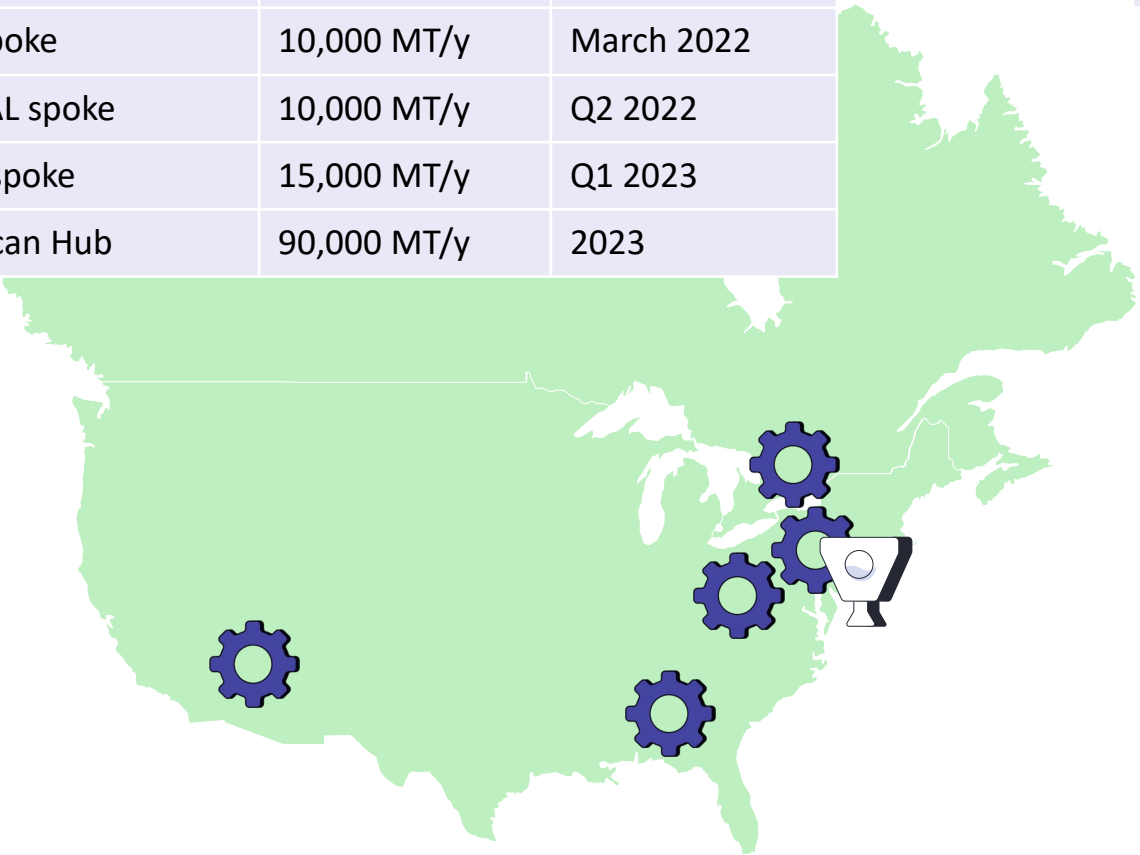
Hub Technologies

- Recover battery grade chemicals including lithium
- Black mass directly treated using hydrometallurgy
- No high heat thermal processing
- No loss of components

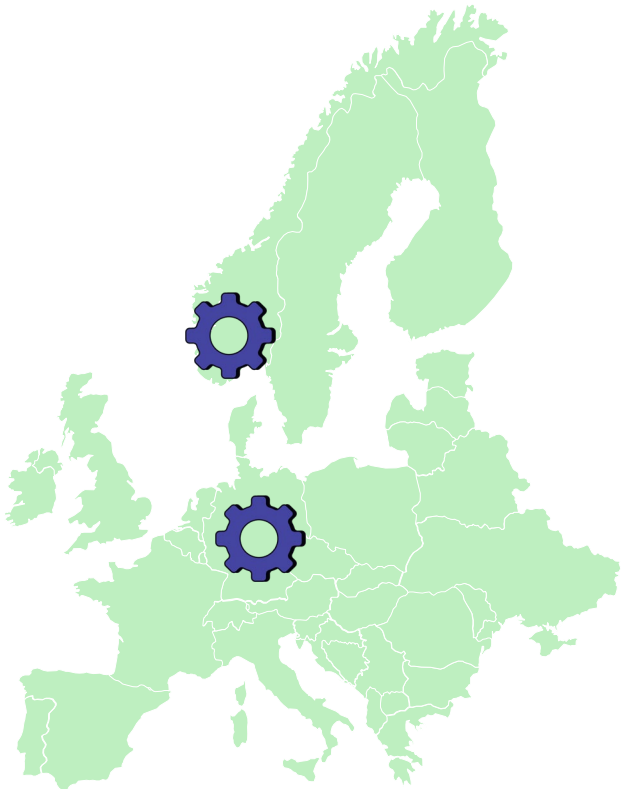
EXISTING CAPACITY & UNDER DEVELOPMENT



North American	Capacity	Operational
Kingston, ON spoke	5,000 MT/y	Now
Rochester, NY spoke	5,000 MT/y	Now
Gilbert, AZ spoke	10,000 MT/y	March 2022
Tuscaloosa, AL spoke	10,000 MT/y	Q2 2022
Warren, OH spoke	15,000 MT/y	Q1 2023
North American Hub	90,000 MT/y	2023



EMEA	Capacity	Operational
Norway spoke	10,000 MT/y	Q1 2023
Germany* spoke	10,000 MT/y*	TBA





Pack Shredding

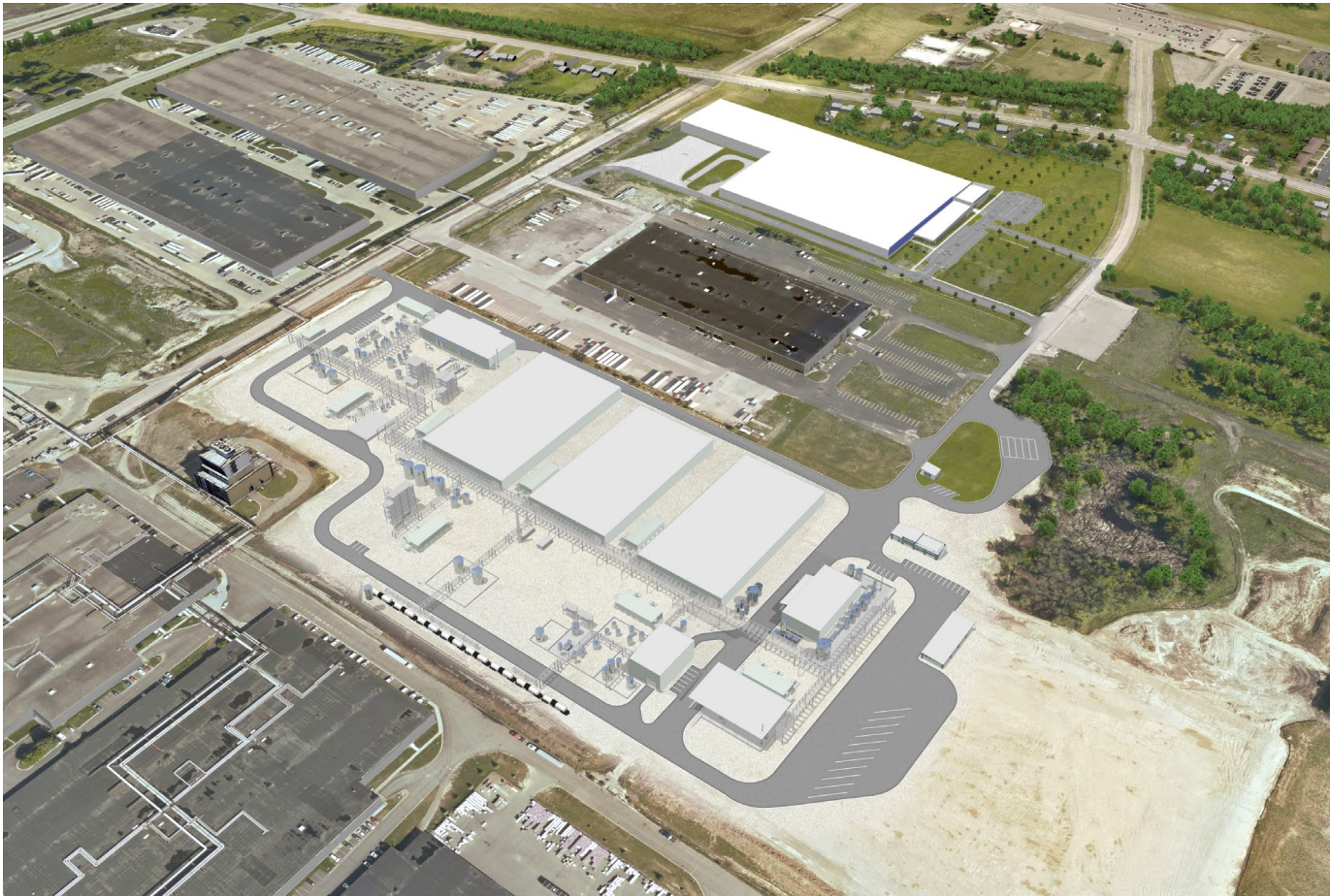
- ✓ Gilbert Spoke will be the first Li-Cycle spoke with the ability to shred an entire EV pack.
- ✓ Several advantages
 - DDR or Hazardous Waste packs that are dangerous to dismantle
 - Witness destruction of R&D prototype packs
 - Cell-To-Pack shredding (pack is effectively a large module)
- ✓ Maintain the option to either dismantle packs into modules or shred entire packs



COMMERCIAL HUB DEVELOPMENT UPDATE AND KEY MILESTONES



Li-Cycle Commercial Hub Preliminary Rendering



2020

- Definitive engineering, permitting and infrastructure management work commenced

2021

- Definitive engineering work being completed; execution work commencing

2022

- Broke ground January 2022
- Construction and equipment procurement

2023

- Targeted construction completion and ramp-up by early 2023
- Estimated capacity of 35,000 tonnes of Black Mass processing annually



Scalable Technologies

Li-Cycle's patented Spoke & Hub Technologies™ use modular design principals, enabling rapid capacity growth to meet market demand.



High Recovery

Closed-loop resource recovery of up to 95% of the critical materials from lithium-ion batteries of all chemistries and form factors.



Environmentally Sustainable

Environmentally-friendly alternative generating 34% fewer emissions than thermal processes and 74% less emissions than virgin mining.



Global Reach

Li-Cycle endeavors to expand internationally into both Europe and Asia, and is securing the funding, personnel and partnerships to facilitate this.



LICY
LISTED
NYSE