

20 26 | MEMBER DIRECTIONS



MINNESOTA ASPHALT
PAVEMENT ASSOCIATION

INTEGRITY | QUALITY | LEADERSHIP



PAVE THE WAY WITH LUBE-TECH

At Lube-Tech we're more than just a lubricants vendor, we are your One-Stop Shop for all your fleet-related needs. With a broad portfolio of fluids, chemicals, equipment, and services, alongside premium brands offerings such as Mobil Delvac, Motivity, BlueDef, we work to ensure the world keeps moving.



LUBRICANTS



RECYCLING



**EQUIPMENT
& SERVICES**



CHEMICALS



**VEHICLE
WASH**



**SHOP
SUPPLIES**



**LAB
ANALYSIS**

Consolidate your needs with Lube-Tech today!
Visit lubetech.com or call (800)-636-7990

FEATURES

Leadership Message & Events 4

Board of Directors 5

MAPA Committees 6

MAPA Staff 7

LISTINGS

Contractor Members 9-15

Associate Members 15-38

 Aggregate Suppliers 15-18

 Banking, Financial, Accounting, Insurance 19-20

 Engineering, Technical, Consulting. 21-24

 Equipment Suppliers 25-32

 Industry Partners 32-34

 Legal 35-36

 Refineries, Chemical Additives & Oil 36-38

Minnesota Department of Transportation 40-47

 MnDOT Organization Chart 46-47

County Engineers 50-59

Municipal Engineers 60-75

MN State Government Numbers 76-77

 MN Pollution Control Agency (MPCA) 77

Index of Members and Advertisers 78-80

MAPA

CONTRACTOR MEMBERS

ASSOCIATE MEMBERS

MNDOT

COUNTY ENGINEERS

MUNICIPAL ENGINEERS

STATE GOVERNMENT

INDEX

LEADERSHIP MESSAGES

MAPA

**President's Message -
Dave Clement, KGM Contractors, Inc**



It has been my pleasure serving as MAPA president for the last two years, it has been an amazing experience. The association continues to grow as we all strive to promote our core values to

make Asphalt the number one choice of owners across Minnesota. Some of those important principles are market development, promoting highway funding, quality improvement, product sustainability, and environmental stewardship.

The future looks bright for our industry but there will always be challenges to overcome. Legislative EPD standards, attracting and training new workers, working to increase funding, growing market share, and ensuring fair environment standards are several current important issues facing our association.

MAPA has been a leader in resolving problems vital to our cause. Several past successes have been getting overweight truck permits for construction, working with MNDOT to refine or change specifications to improve our product, promoting worker safety, working with legislators to ensure any laws passed benefit our product, work force and the traveling public. MAPA was a huge influence in getting the legislature to create the industry task force on creating EPD's. Training and developing our workforce continue to be a big part of what we do everyday. MAPA publications like the Asphalt Insider keep members informed of current developments that affect us all.

Together we will continue the proud tradition MAPA has fostered. Promoting our product has always been a top core value. I encourage everyone to get involved and with your help our asphalt industry has an amazing future ahead!!!

**Executive Director's Message -
Abbey Bryduck, MAPA**



The past year has been defined by two unmistakable themes: uncertainty and politics. A new federal administration has reshaped how we've traditionally done business, testing long-

standing expectations around policy and implementation. For those in the public sector, these shifts have been especially pronounced. Many new policies remain tied up in the courts, leaving road builders and others waiting for clarity on the rules that guide our work.

And then, of course, there's politics. After two decades at the Minnesota State Capitol, I can confidently say the pendulum has swung, from policy driving politics to politics driving policy. It's easy to get swept up in the noise.

For our industry, the issues layered atop that backdrop have been decarbonization and funding. Whether you call it decarbonization or efficiency, the goal is the same—and the State of Minnesota is fully on board. MAPA's focus is to ensure you're prepared to comply, compete, and lead.

Funding remains a perennial challenge. While the legislature passed the largest transportation funding package in state history, many of us have still seen fewer projects this season. The next challenge is clear: protecting pavement funding. The legislature can appropriate dollars, but we must ensure those funds reach the roads and bridges they were promised to support. Our state constitution guarantees it, and we will continue to hold our leaders accountable to that promise. We have our work cut out for us, but we also have what we need: strategy, intention, and strength in numbers. Each MAPA member has taken the first and most important step by joining together as partners. Thank you for your trust, your engagement, and your commitment to advancing this industry through uncertain times.

EVENTS

MN 2025 Asphalt Conference
December 9-10, 2025
 St. Cloud, MN | River's Edge Convention Center

For more information on our events, please contact:
Abbey Bryduck | abryduck@mnapa.org

2025 BOARD OF DIRECTORS

MAPA



PRESIDENT
Dave Clement
KGM Contractors, Inc
9211 Highway 53
Angora, MN 55703
(218) 666-5698
Fax (218) 666-5708
davec@kgmcontractors.com



VICE PRESIDENT
Dusty Ordorff
Bituminous Roadways
1520 Commerce Drive
Mendota Heights, MN 55120
(651) 686-7001
Fax (651) 687-9857
dustyo@bitroads.com



SECRETARY
Anthony Koop
FPI Paving
3230 Rice St.
St. Paul, MN 55126
(651) 484-0385
Fax: (651) 484-5327
anthonyk@fpipaving.com



TREASURER
Kristopher Duinick
Duinick Inc.
408 6th Street
PO Box 208
Prinsburg, MN 56281
(320) 978-6011
kristopherd@duinick.com



PAST PRESIDENT
Chris Benson
Martin Marietta
7200 Hemlock Lane
Suite 200
Maple Grove, MN 55369
(763) 424-5400
christopher.benson@
martinmarietta.com



**In Memory of
Aaron Tast**
Former Consulting
Engineer Director
He is deeply missed.



DIRECTOR
Randy Holladay | Flint Hills
PO Box 64596
St Paul, MN 55164
(651) 480-3838 Fax: (651) 480-3874
randy.holladay@fhr.com



DIRECTOR
Shaun Johnson | J&W Asphalt
900 128th St W UNIT 205,
Burnsville, MN 55337
(952) 894-9078



DIRECTOR
Max Jacoby | Pine Bend
PO Box 72
Vermillion, MN 55085
(651) 437-2333
mjacoby@pinebendpaving.com



DIRECTOR
Matt Oman | Mathy Construction
915 Commercial Ct.
Onalaska, WI 54650
matt.oman@mathy.com



DIRECTOR
Jeremy Ganske | Knife River
4787 Shadowwood Dr NE
Sauk Rapids, MN 56379
jeremy.ganske@kniferiver.com



DIRECTOR
Kim Tolzman
Minnesota Paving and Materials
14475 Quiram Drive
Rogers, MN 55374
kim.tolzman@minnpm.com



ASSOCIATE MEMBER DIRECTOR
Travis Mick | CWMF Corporation
701 Julep Road
Waite Park, MN 56387
travis@cwmfcorp.com



**ENVIRONMENTAL/
SUSTAINABILITY DIRECTOR**
Dan Schellhammer
Midstate Reclamation
21955 Grenada Ave
Lakeville, MN 55044
(952) 985-5555
dans@midstatecompanies.com

2026 MAPA COMMITTEES

BITUMINOUS TECHNOLOGY COMMITTEE

Chair: Brent Carron, Valley Paving

This committee meets three times per year in partnership with MnDOT and AGC. Issues discussed are technical in nature and include MnDOT, county, and city representatives.

ENVIRONMENT & SUSTAINABILITY COMMITTEE

Chair: Jason Versteeg, Duinincx Inc.

This group will meet periodically to respond to urgent needs and to devise and execute strategies for MAPA's environmental and sustainability initiatives.

TRAINING ADVISORY COMMITTEE

Chair: Chris Benson, Martin Marietta

This group will meet monthly or as needed to devise and execute strategies for MAPA's Training Programs and make recommendations to the MAPA Board.

SPECIFICATION WORKING GROUP

Chair: Samantha Primus, KGM

This industry-only group meets as needed to review and discuss potential specification changes.

WORKFORCE DEVELOPMENT INITIATIVE

Chair: Dan Schellhammer, Midstate Reclamation, Inc

This committee will meet as needed to devise and execute strategies for MAPA's Workforce and Training Initiative, including MAPA's Scholarship Program.

EVENTS REVIEW WORKING GROUP

This group will meet as needed to evaluate and devise strategies.

MEMBERSHIP WORKING GROUP

Chair: Dusty Ordorff, Bituminous Roadways

This group will meet as needed to devise and execute strategies to grow MAPA's Membership sectors.

If you are interested in serving on any of these committees, please contact:

Abbey Bryduck: abryduck@mnapa.org

MAPA STAFF

MAPA



EXECUTIVE DIRECTOR
Abbey Bryduck

(651) 203-7249 | abryduck@mnapa.org



ASSOCIATE STAFF LIAISON
Grace Aughey

(651) 203-7254 | grace.aughey@ewald.com



MEMBERSHIP SPECIALIST
Renee O'Byrn

(651) 288-3434 | renee.obyrn@ewald.com



EVENTS MANAGER
Alexis Cartamil

(612) 802-9177 | alexisc@ewald.com



COMMUNICATIONS SPECIALIST
Emilie Simon

(651) 288-3421 | emilies@ewald.com



EVENTS COORDINATOR
Cassie Wray

cassie.wray@ewald.com

CONNECT WITH US





**OUR BROAD RANGE OF SOLUTIONS
KEEPS YOUR BUSINESS MOVING**

SALES • SERVICE • PARTS



- 24/7 Parts and Service Customer Support
- 24/7 Online Parts Ordering
- Field Customer Support Managers
- Complete Mobile Preventative Maintenance & Repair Services
- Rewarding Careers!



**CONSTRUCTION
EQUIPMENT
TRUCKS**

VOLVO



10 LOCATIONS
TO KEEP YOUR
BUSINESS ON
THE MOVE

**BUY • LEASE • RENT: TRUCKS • CONSTRUCTION EQUIPMENT • TRAILERS
LARGE PARTS INVENTORY • SERVICE • FIELD SERVICE • BODYSHOPS**

1.866.NUSS.GRP
www.nussgrp.com

CONTRACTOR MEMBERS

ALLIED BLACKTOP CO. – NP

10503 89th Ave North
Maple Grove, Minnesota 55369
(763) 425-0575 Fax (763) 425-1046
brent@alliedblacktopmn.com
www.alliedblacktopmn.com

Brent Capistrant, President
brent@alliedblacktopmn.com

Naomi Bretz, VP OF Administration
naomi@alliedblacktopmn.com

Jeremy Swenson, VP of Operations
j.swenson@alliedblacktopmn.com

Blair Jensen, VP of Sales
blair@alliedblacktopmn.com

Asphalt Maintenance and Rehabilitation,
Patching/Paving, Seal Coating, Crack Repair,
Sweeping, Commercial: Municipal,
Multi-Housing, Educational

**ANDERSON BROTHERS
CONSTRUCTION CO. – P**

11325 State Highway 210E
Brainerd, MN 56041
218-829-1768

Terry McFarlin

Mike Niemi
mniemi@andersonbrothers.com

David Sustercich

**ASPHALT SURFACE TECH.
CORP. – NP**

PO Box 1025
St. Cloud, MN 56302
(320) 363-8500 Fax (320) 363-8700
batzer2@hotmail.com
www.astechmn.com

Bruce R. Batzer, President,

**Mary L. Aschenbrenner,
Vice President/Secretary**

Dale R. Strandberg, Vice President

AURORA ASPHALT AND CONCRETE

16200 Highway 10
Elk River, MN 55330
763-496-2976

Ron Reibling, President and CEO

Adam Klepsa, Chief Logistics Officer
adam.klepsa@aurora-asphalt.com

Drew Pichotta, Chief Operations Officer
d.pichotta@aurora-asphalt.com

Aurora Asphalt and Concrete is a trusted, locally-owned company specializing in high-quality asphalt and concrete services for residential and commercial clients. With years of industry experience, we pride ourselves on delivering durable, cost-effective solutions tailored to meet the unique needs of each project. From driveways and parking lots to sidewalks and sealcoating, our skilled team is committed to excellence, safety, and customer satisfaction. Whether you're looking to install new pavement, repair existing surfaces, or enhance curb appeal, Aurora Asphalt & Concrete is your reliable partner for lasting results.

BITUMINOUS PAVING, INC. – P

PO Box 6
Ortonville, MN 56278
(320) 273-2113 Fax (320) 273-2120

Jerry Bajari, President
jerryb@bpimn.com

Asphalt Paving, Sealcoating
Plant Location: Ortonville, MN
2 Portable Plants

BITUMINOUS ROADWAYS, INC. – P

1520 Commerce Drive
Mendota Heights, MN 55120
(651) 686-7001 Fax (651) 687-9857
info@bitroads.com
www.bitroads.com

Kent D. Peterson, CEO
petersonk@bitroads.com

Dusty Ordoff, Vice President
dustyo@bitroads.com

Pamela M. Hague, Secretary
haguep@bitroads.com

Jeff Zahn, Treasurer
zahnj@bitroads.com

Bituminous Roadways, Inc. (BR) offers superior asphalt pavement solutions to customers throughout the Twin Cities Metro area. For more than 75 years, BR has been an industry

CONTRACTOR MEMBERS

leader providing customers the highest quality results for all their pavement projects. We are dedicated to safety, innovation, continual improvement, environmental stewardship and most importantly, superior customer service. From commercial/industrial pothole repair to interstate highway paving, no project is too big or too small for BR. Our core competencies range from asphalt paving, patching and crack sealing to milling, excavating, installing underground utilities and grading of all pavement areas; including parking lots, trails, roadways and outdoor athletic surfaces.

CENTRAL SPECIALTIES INC. – P

6325 Co Rd 87 SW
 Alexandria, MN 56308
 (320) 762-7289 Fax (320) 762-7290
Ella Koehn
 ella@centralspecialties.com

C.S.MCCROSSAN

7865 Jefferson Hwy,
 Maple Grove, MN 55369
 763-425-4167
Justin Engelman
 justin.engelman@mccrossan.com

Ken Beck
 ken.beck@mccrossan.com

C. S. McCrossan is a diversified highway/heavy civil general contractor.

DMJ ASPHALT INC. – NP

2392 Pioneer Trail
 Medina, MN 55340
 (763) 478-6878 Fax (763) 478-2329
 www.dmjasphalt.com
Kari Johnson, President
 kari@dmjasphalt.com
Dave Bechtold, Vice President

Streets, Parking Lots, Driveways, Trails, Tennis Courts, Patching, Sealcoating, Crackfill

DUININCK INC. – P

408 6th Street
 PO Box 208
 Prinsburg, MN 56281
 (320) 978-6011 Fax (320) 978-4978

info@duininck.com
 www.duininck.com

Chris Duininck
Jason Duininck
Kristopher Duininck

Asphalt Paving, Engineering Services, Design/Build, Grading, Site Work, Street Construction, Parking Lots/Tennis Courts, Underground Utilities/Infrastructure, Concrete and Asphalt Recycling, Gravel Base and Shouldering, Washed Materials, Quarry Supply, Aggregate Supply, Asphalt Production

FPI PAVING CONTRACTORS, INC. – NP

3230 Rice Street
 St. Paul, MN 55126
 (651) 484-0385
 www.fpipaving.com

Chad W. Nelson, CEO
 chadn@fpipaving.com
Anthony Koop, President
 anthonyk@fpipaving.com

Ron C. Birch, Estimator/Project Manager
 ronb@fpipaving.com

Les Burshten, Estimator/Project Manager
 Lesb@fpipaving.com

Jon M. Hager, Estimator/Project Manager
 Jonh@fpipaving.com
 Asphalt Paving Contractor, Street Construction, Commercial Parking Lot Construction/Maintenance, Tennis Courts, Trails, Asphalt Patching & Overlay

GMH ASPHALT CORPORATION – NP

9180 Laketown Road
 Chaska, MN 555318
 (952) 442-5288
 gmh@gmhasphalt.com
 www.gmhasphalt.com

GOODMANSON CONSTRUCTION – NP

600 Kasota Ave SE
 Minneapolis, MN 55414
 (651) 636-4996
 www.goodmansonconstruction.com
Rick Goodmanson, CEO

CONTRACTOR MEMBERS

Molly Gaier, COO**Neil Peterson, Vice President****Jimmer Moses, General Superintendent****Justin Miles, Asphalt Superintendent**

justinm@goodmansonconstruction.com

Specializing in: Commercial and Industrial Parking Lots, GPS Design, Excavation/Grading, Asphalt, and Concrete

HAWKINSON CONSTRUCTION – P

PO Box 278

Grand Rapids, MN 55744

Derek Hawkinson

info@hawkinsonconstruction.com

Whether you need a new driveway, a fresh asphalt overlay, parking pad or just a place to play a little basketball, Hawkinson Construction's team of paving professionals have the experience, skill and technology to do the job right the first time.

J&W ASPHALT – NP

900 128th St, Suite 205

Burnsville, MN 55337

(952) 894-9078

tate@jwasphalt.com

www.jwasphalt.com

Shaun Johnson, Owner**Ryan Herrmann, President**

We specialize in installing new asphalt driveways, replacing, and repairing existing asphalt driveways, parking lots and pathways. We are the largest asphalt driveway contractor (in volume, market share, and annual sales) in the Twin Cities metro area.

KNIFE RIVER – P**Knife River-CMN**

4787 Shadowwood Dr NE

Sauk Rapids, MN 56379

Knife River-NMN

4101 Bemidji Ave N

Bemidji, MN 56601

Jeremy Ganske, President MN

Jeremy.Ganske@kniferiver.com

Ron Hall, VP CMN

Ron.Hall@kniferiver.com

Kevin Stroeing, VP NMN

Kevin.Stroeing@kniferiver.com

Aggregates, Asphalt and Construction

KGM CONTRACTORS, INC. – P

9211 Highway 53

Angora, MN 55703

(218) 666-5698 Fax (218) 666-5708

www.kgmcontractors.com

Kerry Abramson, President

kerry@kgmcontractors.com

Pauline Rutchasky, Vice President

pauline@kgmcontractors.com

Heath Line, Treasurer

heath@kgmcontractors.com

Dave Clement, Asphalt Division Manager

davec@kgmcontractors.com

Tom Kvas, Secretary

Heavy Highway Grading & Asphalt Construction

MARK SAND & GRAVEL CO. – P

525 Kennedy Park Road; PO Box 458

Fergus Falls, MN 56538

(218) 736-7523 Fax (218) 736-2647

mail@marksandgravel.com

www.marksandgravel.com

Mark Thorson, President**Brianne Balcer, Vice President of Logistics****Jeff Hatlewick, Vice President of Administration****Justin Rodeman, Vice President of Operations**

Bituminous Paving, Aggregate Products

2 Portable Plants; 1 Stationary Plant

MARTIN MARIETTA – P

7225 Northland Drive, Suite 106

Brooklyn Park, MN 55428

Asphalt Sales (763) 315-6060

Aggregate Sales (763) 315-9012

www.martinmarietta.com

Steve Sauer – Regional VP/GM

Steven.sauer@martinmarietta.com

Mark Johnson – VP/GM

Mark.johnson@martinmarietta.com

Chris Benson, Area Manager

Christopher.benson@martinmarietta.com

CONTRACTOR MEMBERS

Matt Schulenberg, Regional Sales Manager
 Matt.schulenberg@martinmarietta.com

McNAMARA CONTRACTING, INC. – P

16700 Chippendale Avenue
 Rosemount, MN 55068
 (651) 322-5500 Fax (651) 322-5550
 www.mcnamaracontracting.com

Grading, Aggregate Base, Bituminous Paving,
 Parking Lots, Streets, Highways, Plant Sales,
 Concrete Curb & Flatwork

Plant Location: Rosemount, (651) 322-3939

NEILSON BLACKTOPPING – P

305 E Industrial St
 Kasota, MN 56050
 (507) 931-6115
 www.nielsenblacktopping.com

NORTH VALLEY, INC. – NP

20015 Iguana Street NW, Suite 100
 Nowthen, MN 55330
 (763) 274-2580 Fax (763) 274-2584
 contactus@northvalleyinc.net
 www.northvalleyinc.net

Les Bloom, President/CEO

Jeff Wunderlich, President/COO

Heavy Highway/Streets, Milling/Reclaiming,
 Excavation/Grading, Asphalt Paving

**NORTHLAND CONSTRUCTORS
 of DULUTH, INC. – P**

4843 Rice Lake Road
 Duluth, MN 55803
 (218) 722-8170 Fax (218) 722-4560
 www.northlandconstructors.com

Greg Fredlund, President
 greg.fredlund@northlandconstructors.us

Craig Ploetz, PE, VP – Project Management
 craig.ploetz@northlandconstructors.us

Aaron Holmgren, VP – Field Operations
 aaron.holmgren@northlandconstructors.us

Jeremy Carlson, PE, Project Manager
 jeremy.carlson@northlandconstructors.us

Highway/Heavy Construction; Asphalt
 Paving, Production and Retail Sales; Sitework;

Underground Utility Construction; Concrete
 Flatwork; Bridge Construction and Demolition;
 Rock Blasting; Bituminous Aggregate
 Production; Crushing and Screening of Sand &
 Gravel; Disposal of Concrete and Bituminous
 Demolition Materials.

NORTHLAND PAVING

12450 Beard Avenue South
 Burnsville, MN 55337
 (952) 469-1044 Fax (952) 469-2126
 www.nlandpaving.com

Kaye Klinefelter, President, WBE Certified
 kaye@nlandpaving.com

Randy Simon, Vice President & Lead Estimator
 randy@nlandpaving.com

Asphalt Paving Contractor, Parking Lots,
 Street Construction, Tennis Courts, Pathways,
 Patching and Overlays

NORTHWEST ASPHALT, INC. – NP

1451 Stagecoach Road
 Shakopee, MN 55379
 (952) 445-1003 Fax (952) 445-1056
 www.Northwest-Totalsite.com

Michael B. Pfeiffer, President
 mbpfeiffer@nwasphalt.net

Debra L. Hendrickson, Vice President
 dhendrickson@nwasphalt.net

Estimating Department
 estimating@northwest-totalsite.com

Asphalt Paving, Excavating/Grading,
 Sewer/Water

ORIGINAL DRIVEWAY DESIGN – NP

4190 Vinewood Lane, #111-309
 Plymouth, MN 55442
 763-559-9004
 randy@drivewaydesign.net
 www.drivewaydesign.net

**PARK CONSTRUCTION
 COMPANY – NP**

1481 81st Avenue NE
 Spring Lake Park, MN 55432
 (763) 786-9800 Fax (763) 786-2952
 www.parkconstructionco.com

Jeff Carlson, President

CONTRACTOR MEMBERS

Charlie Borene, Vice President
cborene@parkconstructionco.com
Brent Thompson, General Superintendent
Derick Sonnenberg, Project Manager
Chris Grimes, Project Manager

Since 1916, Highway Heavy, Industrial and Commercial Contractor
Asphalt Paving, Excavation, Utilities

PINE BEND PAVING, INC. – P

PO Box 72
Vermillion, MN 55085
(651) 437-2333 Fax (651) 437-7960
jjacoby@pinebendpaving.com
www.pinebendpaving.com

Nic Jacoby, VP

Richie Jacoby, VP

Max Jacoby, VP

Jolene Jacoby, Treasurer

Asphalt Producer, Aggregate Supplier, Asphalt Paving Contractors, Asphalt Milling, Grading & Basework, New Construction, Overlay & Maintenance, Sealcoat Restoration, Street & Parking Lots

Office & Shop Location:
16500 Fischer Avenue
Vermillion, MN

Aggregate Pit Location:
18316 Fischer Avenue
Vermillion, MN

Plant Location:
13155 Courthouse Boulevard
Rosemount, MN

PLEHAL BLACKTOPPING, LLC – NP

12414 Hwy 41 Frontage Rd
PO Box 317
Shakopee, MN 55379
(952) 445-7676 Fax (952) 445-7682
plehalman@plehal.com
www.plehal.com

Erik Anderson

Paul Booth

Parking Lots, Streets, Driveways, Tennis Courts, Pathways, Patching & Repair

ROCHESTER SAND & GRAVEL – P

4105 East River Road NE
Rochester, MN 55906
(507) 288-7447 Fax (507) 252-3477
perry.atterholt@mathy.com
www.rochsg.com

**Chad Kelley, Vice President/
Co-Division Manager**
chad.kelley@rochsg.com

**Brian Schumacher, Vice President/
Co-Division Manager**
brian.schumacher@rochsg.com

Jeanne Groski, Corp. Secretary
jeannette.groski@rochsg.com

Highway/Heavy Construction, Asphalt Paving and Production, Aggregate Production, Site Work and Milling/Pulverizing

RUM RIVER CONTRACTING COMPANY – NP

31913 124th Street
Princeton, MN 55371

Thomas Hultman
thultman@rumrivercontracting.com

Rum River Contracting Company, based in Princeton, MN, is a family-owned paving contractor business that has been delivering exceptional services since 1991. With over three decades of industry experience, we are fully licensed and insured, ensuring peace of mind for our clients. We pride ourselves on our commitment to quality, with the owner present on every job site to ensure the highest standards. We stand behind our work, offering written guarantees on all projects. Furthermore, we provide free estimates, returned within three days, demonstrating our commitment to transparency and customer satisfaction.

T.A. SCHIFSKY & SONS, INC. – P

2370 East Highway 36
North St. Paul, MN 55109
(651) 777-1313 Fax (651) 777-7843
info@TASchifsky.com
www.TASchifsky.com

Asphalt Contractor, Street Construction, Parking Lots, Tennis Courts, Driveways, Environmental Porous Pavement, Retail

CONTRACTOR MEMBERS

Asphalt Sales, Recycle Base

THE ASPHALT COMPANY – NP

5115 Excelsior Blvd
Minneapolis, MN 55416

James Cigelske
theasphaltcompany@gmail.com

At The Asphalt Company, Inc. we understand that your driveway is more than just a place to park your car – it’s an extension of your home’s aesthetic appeal and value. That’s why we provide high-quality, reliable, and affordable asphalt services throughout the Twin Cities Metro Area. Whether your driveway is damaged, outdated, needs a driveway extension, or no longer meeting your needs, we can help you create a beautiful, functional, and durable new surface that enhances your property’s curb appeal and value.

TRUSEAL LLC – NP

11278 Rich Valley Blvd.
Inver Grove Heights, MN 55077
(952) 994-9025

Steve Tjornhom
stjornhom@trusealamerica.com

Asphalt Contractor, Street Construction, Parking Lots, Tennis Courts, Driveways, Environmental Porous Pavement, Retail Asphalt Sales, Recycle Base

ULLAND BROTHERS, INC. – P

PO Box 340
Cloquet, MN 55720
(218) 384-4266 Fax (218) 384-4110
jcarlson@ulland.com
www.ulland.com

Jeff Carlson, President
jcarlson@ulland.com

Andy Wagner, Exec. Vice President
awagner@ulland.com

Troy Plaster, Quality Control Manager
tplaster@ulland.com

Ryan Swanson, Vice President
rswanson@ulland.com

Ben Gaard, Estimator/Project Manager
bgaard@ulland.com



Amrize Midwest Inc. provides high quality Construction Aggregate and Ready Mix Concrete to the Twin Cities metro area. At Amrize Midwest Inc., we believe in environmental excellence, sustainability, and corporate responsibility.



Twin Cities Metro Office
2815 Dodd Road, Suite 101 Eagan, MN 55121
Tel: 651-683-0600

www.amrize.com

Fargo/Moorhead Office
2410 8th St S, Moorhead, MN 56560
Tel:218-236-9640

ASSOCIATE MEMBERS

2501 E. Main St.
 Albert Lea, MN 56007
 Phone (507) 373-1960
 Fax (507) 373-6360
 www.ulland.com

**Andy Erichson, Vice President
 /General Manager**
 aereichson@ulland.com

Mitch Froehlich, Aggregate Manager
 mrfroehlich@ulland.com

Chris Harber, Estimator/Project Manager
 charber@ulland.com

Matt Carlson, Estimator/Project Manager
 mcarlson@ulland.com

Louie Grossman, Estimator/Project Manager
 lgrossman@ulland.com

Andy Louis, Estimator/Project Manager
 alouis@ulland.com

Bituminous Aggregate Production,
 Concrete Aggregate Production,
 Crushing & Screening of Sand &
 Gravel, Basalt Quarries, Limestone
 Quarries, Bituminous Paving, Heavy
 Highway Construction, Site Preparation,
 Underground Utility Construction

VALLEY PAVING, INC. – P

8800 13th Avenue E
 Shakopee, MN 55379
 (952) 445-8615 Fax (952) 445-0355
 brent@valleypaving.com
 www.ValleyPaving.com

Brent A. Carron, President

Richard A. Carron, Vice President

Heavy Highway/Streets, Milling/

Reclaiming, Excavation/Grading
 Utilities/Pipe

WM. MUELLER & SONS, INC. – P

831 Park Avenue
 PO Box 247
 Hamburg, MN 55339
 (952) 467-2720 Fax (952) 467-3894
 aprilk@wmmueller.com
 www.wmmueller.com

Timothy Mueller, President/Treasurer

Jeff Rickaby, Secretary

Brian Droege, Vice President

Cory Hoernemann, Vice President

Mori Willemsen, Vice President

Asphalt Paving Contractors, Bituminous
 Manufacturing, Limestone Products, Grading
 & Base, Highway Construction, Parking Lots,
 Resurfacing, Sand & Gravel Products,
 Street Construction

Plant Location: County Road 40, Carver, MN
 1 Portable Plant

WW BLACKTOPPING, INC. – P

700 Industrial Road
 Mankato, MN 56001
 (507) 387-1518 Fax (507) 387-2228
 mitch@wwblacktopping.com
 www.wwblacktopping.com

Mitchell Wolff, President

Dennis Wolff, Vice President

Dale Schmit, Treasurer

AGGREGATE SUPPLIERS

ACI ASPHALT & CONCRETE, LLC

10285 89th Ave. North
 Maple Grove, Minnesota 55369
 (763) 424-9191 Fax (763) 424-9190
 info@aciasphalt.com
 www.aciasphalt.com

Patrick Polazzo, President

patrick.polazzo@aciasphalt.com

Jud Getty, Vice President of Operations
 jud.getty@aciasphalt.com

Asphalt Paving and Resurfacing, Asphalt
 Patching and Repair, Sealcoating and Crack
 Filling, Concrete Curbing, Flatwork and

ASSOCIATE MEMBERS | AGGREGATE SUPPLIERS

ASSOCIATE MEMBERS

CB Repair, Polyjack Concrete Lifting & Drainage Solutions.

CUSTOM ASPHALT, INC

12010 St. Croix Trail S
Hastings, MN 55033
651-343-2067

Mike Knoll 651-343-2067
Calvin Knoll 612-401-8755

Custom Asphalt, Inc is a family owned business that specializes in residential driveways, asphalt repair, and asphalt maintenance.

BRYAN ROCK PRODUCTS INC.

PO Box 215
Shakopee, MN 55379
(952) 445-3900 Fax (952) 445-0809
ericb@bryanrock.com
www.bryanrock.com

Matt Bryan, VP of Operations

Eric Bryan, VP Sales
ericb@bryanrock.com

DRESSER TRAP ROCK INC.

1000 East Avenue
PO Box 517
Dresser, WI 54009
(715) 483-3216 Fax (715) 483-3219
joe@dressertraprock.com
max@dressertraprock.com
www.dressertraprock.com

Joe Winkel- Sales / Marketing
Max Bowen - President
Rock Quarry

KRAEMER MINING & MATERIALS INC.

Burnsville Quarry
1020 W. Cliff Road
Burnsville, MN 55337
(952) 890-3611 Fax (952) 894-0808

AGGREGATE SUPPLIERS | ASSOCIATE MEMBERS



WORKING TOGETHER TO BUILD A MORE CERTAIN WORLD.

Your partner in pavement materials engineering, testing, inspection, and analysis.

- Performance testing, including Hamburg wheel rut, DCT, and I-FIT
- Analysis using petrography and chemistry methods
- Mix designs including bituminous, WMA, and recycling methods using engineered emulsion, foamed asphalt, and mineral additives
- Ground penetrating radar and falling weight deflectometer testing
- Pavement and aggregate testing laboratories
- High speed profilograph (IRI) testing and evaluation
- Pavement condition evaluation and pavement management programs
- Retroreflectivity testing of pavement markings

www.teamAET.com
800.972.6364



ASSOCIATE MEMBERS

Mille Lacs Quarry
16808 300th Street
Onamia, MN 56359
(952) 890-3611

David Ostlie, Aggregate Sales Manager
dostlie@kraemerm.com, (952) 224-1722

Crushed Limestone Materials, Crushed Granite
Materials, Recycled Base Material

L.G. EVERIST, INC.

350 S. Main Ave, Suite 400
Sioux Falls, SD 57104
(605) 334-5000 Fax (605) 334-3656
info@lgeverist.com
www.lgeverist.com

Monte Kerzman
mjkerzman@lgeverist.com

Construction Aggregates, Transload/Bulk
Services, Cut Stone/ Dimensional Stone,
Industrial Stone, Decorative Stone, Rail
Services, Water Storage

MARTIN MARIETTA

St. Cloud Quarry P.O. Box 7517
St. Cloud, Minnesota 56302
(320) 229-2111 Fax (320) 564-2319
www.martinmarietta.com

Mark Johnson, VP/GM Alden District
mark.johnson@martinmarietta.com

Steve Juhl, District Sales Manager
steve.juhl@martinmarietta.com

Dan Bokinskie, Quarry Sales Representative
dan.bokinskie@martinmarietta.com

Yellow Medicine Quarry
200 14th Street
Granite Falls, MN 56241
(320) 564-2125 Fax (320) 564-2319

MEYER LABORATORY, LLC


2401 NW Jefferson Street,
Blue Springs, MO 64015
(816) 228-4433
www.meyerlab.com

Don Stone, Division Sales Manager
dstone@meyerlab.com, (847) 630-2399


BRAUN INTERTEC

The Science You Build On

- Pavement & Mix Designs
- Evaluation & Network Assessments
- Rehab & Preservation Optimization
- Materials & Performance Testing



Contact Us!



800.279.6100

**F W
H T**

**FABYANSKE
WESTRA
HART &
THOMSON**

- Construction Law
- Commercial Litigation
- Property and Liability Insurance Claims
- Surety Claims and Workouts
- Public Bidding and Procurement
- Architectural and Engineering Liability
- Mediation and Alternative Dispute Resolution
- Real Estate Litigation
- Insurance Coverage

**80 South 8th Street
Suite 1900
Minneapolis, MN 55402
612.359.7600
www.fwhtlaw.com**

ASSOCIATE MEMBERS | AGGREGATE SUPPLIERS

ASSOCIATE MEMBERS

Meyer is a US-based chemical manufacturer focused on delivering customized industrial cleaning programs that address our customers' most critical needs. Our commitment to providing tailored solutions, expert installation, and unmatched service has not changed in 45+ years. With an expansive, dedicated, and knowledgeable sales team, we are proud to offer that same unmatched service to a diverse and expanding customer base in the US and Canada.

Our substantial growth, innovative solutions, and unmatched service have positioned Meyer as the industry leader, but what truly distinguishes us is our company culture, dedication to service, and building relationships with our customers. We pride ourselves on upholding high service standards and ensure that we honor our commitments—establishing us as a reliable partner you can trust to take care of your industrial cleaning needs.

R.J. ZAVORAL AND SONS, INC

PO Box 435
 East Grand Forks, MN, 56721
 www.rjzavoral.com
 218-773-0586

Dave Zavoral, Vice President
 dave@rjzavoral.com

Nick Carlin, Mainline Operations Manager
 ncarlin@rjzavoral.com

Since 1951, R.J. Zavoral and Sons, Inc. has been moving the earth all over MN and ND. Our services include earth moving, excavation, Underground utilities installation, Mainline and Commercial paving, Crushing and Aggregate sales.

AGGREGATE SUPPLIERS | ASSOCIATE MEMBERS

Justin P. Short
 Attorney
 jshort@bestlaw.com
 612.341.9718

Rooted in
 a century
 of trust.

Construction Law • DOT Claims
 Bid Protests • Mechanic's Liens
 Construction Defect Claims
 OSHA Citations and Violations
 Payment and Performance Bond
 Claims • Contract Negotiation
 Business & Corporate Law • Litigation
 Employment Law • Real Estate
 Estate Planning & Trusts

100 years
Best & Flanagan

BANKING, FINANCIAL, ACCOUNTING, INSURANCE

BMO HARRIS BANK

50 South Sixth Street, Ste 1000
 Minneapolis, MN 55402
 (612) 904-8193 Fax (612) 904-8012

wes.anderson@bmo.com
 www.associatedbrc.com

**Jeff Payne, Vice President -
 Commercial Banking**
 Jeffrey.Payne@bmo.com

BMO Commercial Banking specializes in banking contractors, with over \$12 billion in loans committed to the Engineering & Construction industry across North America. Relationships are managed locally, and credit decisions are made locally with an emphasis on quick decisions. We offer free consultative advice on such topics as the optimal capital structure for your business, whether converting to an ESOP makes sense, and we can help with

may aspects of the acquisition process. We're here to help!

CHRISTENSEN GROUP INSURANCE

9855 W. 78th Street Suite 100
 Eden Prairie, MN 55344
 (952) 653-1000
 astarks@christensengroup.com
 www.ChristensenGroup.com

HOLMES MURPHY CONSTRUCTION

225 S 6th St Suite 1900
 Minneapolis, MN 55402

 (612) 349-2400 Fax (612) 349-2490
 www.csdz.com

Mary Cave, Client Executive
 mcave@holmesmurphy.com

Dan Etzel, Vice President
 detzel@holmesmurphy.com

Rob Dahlin, Vice President
 rdahlin@holmesmurphy.com

Josh Loftis, Senior Vice President
 jloftis@csdz.com

Nathan Weaver, Surety Client Executive
 NWeaver@holmesmurphy.com

Colby Whiter, Surety Client Executive
 CWhite@holmesmurphy.com

Brian Oestreich, VP, Client Executive
 BOestreich@holmesmurphy.com

Ted Jorgensen, Client Executive/Shareholder
 TJorgensen@holmesmurphy.com

Jason Wilsey VP, Client Executive/Shareholder
 JWilsey@holmesmurphy.com

Justin Pool, Client Executive
 JPool@holmesmurphy.com

Glen Miron, Client Executive
 GMiron@holmesmurphy.com

Jake Schmitz, Client Executive
 JSchmitz@holmesmurphy.com

CSDZ is a nationally recognized specialty risk management organization with 100% of its focus on the construction industry. We're all about building relationships. In an increasingly risky world, we seek to positively impact risk outcomes and accomplish our mission by "contributing to our partners' success". We do this by listening, understanding, advocating, and educating to improve and, ultimately, protect your bottom line.

KLC FINANCIAL, INC.

3514 County Road 101
 Minnetonka, MN 55345
 (612) 968-9568
 shannon@klcfinancial.com
 www.klcfinancial.com

Erin Rasmus, CLFP, Business Development
 erin@klcfinancial.com

Headquartered in Minneapolis, MN, KLC Financial Inc. (KLC) provides lease and finance capital equipment and assets for businesses nationwide. KLC is built on strong relationships with customers, vendors and bank partners. KLC's mission is to bring advantageous equipment finance solutions to clients with integrity, depth of knowledge and speed. This is achieved through a commitment to a shared

ASSOCIATE MEMBERS

vision to bring expertly constructed and flexible financing solutions that accurately meet the needs of business owners

NORTH RISK PARTNERS

PO Box 64016
 St. Paul, MN 55164
 2010 Centre Pointe Blvd
 Mendota Heights, MN 55120
 (651) 379-7800 Fax (651) 379-7801
 www.northriskpartners.com

Litton E.S. Field, Jr.
 litton.fieldjr@northriskpartners.com

Charlie Raeker
 charlie.raeker@northriskpartners.com

Nicole Coty
 nicole.coty@northriskpartners.com

Jon Launstein
 jon.launstein@northriskpartners.com

North Risk Partners specializes in strategic insurance solutions for businesses and individuals. We are committed to helping clients face risk head on with right-fit insurance coverage and attention to opportunities for preventing avoidable losses. For businesses, we offer programming and compliance support in areas of HR, safety, worksite wellness and more. North Risk Partners is one of the largest, privately owned independent insurance agencies in the Midwest with over 300 employees and 26 locations across three states. Our size allows us to offer more choice in our core areas of capability. For businesses, we offer commercial insurance, employee benefits, and surety bonds. For individuals, we offer home, auto, health, life and more.

REDPATH AND COMPANY

Corporate Headquarters
 55 Fifth Street E, Suite 1400
 St. Paul, MN 55101
 (651) 426-7000 Fax (651) 426-5004
 www.redpathcpas.com

Ryan Everhart, CPA, Managing Partner, A&A
Chris Little, CPA, Partner, Team Leader, A&A, Construction/Real Estate/Engineering
Joel Newby, CPA, CCIFP, Partner, A&A,

Construction/Real Estate/Engineering
Alex Helkamp, CPA, CCIFP, Partner, Tax, Construction/Real Estate/Engineering

Beyond the core public accounting services of assurance, personal and business tax, and accounting, Redpath and Company offers strategies and planning services that include multi-state tax, sales and use tax, entity structuring, income deferral methods, look-back calculations, cost segregation studies, and capital gain treatment. Advisory services include employee benefits, mergers and acquisitions, and business valuations.

RBC WEALTH MANAGEMENT

641 East Lake Street, Suite 230
 Wayzata, MN 55391
 (952) 261-3566 – Office Mark
 (612) 757-1657 – Cell Mark
 (952) 261-3598 – Office Adam
 (612) 469-7480 – Cell Adam

Mark Johnson
 mark.l.johnson@rbc.com

Adam Johnson
 adam.m.johnson@rbc.com

RBC Wealth Management – U. S. is headquartered in Minneapolis, MN and is among the top 10 full-service brokerage firms based on assets under administration and number of advisors. We provide access to a full suite of banking, investment, asset management, trust, insurance, credit/lending and other wealth management solutions. Through our partnership with First American, an RBC/City National Company, we offer customized equipment financing solutions to help manage cash flow, enhance liquidity, and increase purchasing power. We serve hundreds of municipal issuers annually through RBC Capital Markets, a leader in U.S. municipal finance. Through our strong market position, we can assist you in reducing your tax liabilities through investments in municipal bonds; with access to new issue and secondary securities that help meet your investment objectives.

BANKING, FINANCIAL, ACCOUNTING, INSURANCE | ASSOCIATE MEMBERS

ASSOCIATE MEMBERS

ENGINEERING, TECHNICAL, CONSULTING

AMERICAN ENGINEERING TESTING, INC.

550 Cleveland Avenue North
St. Paul, Minnesota 55114
(800) 972-6364
www.teamaet.com

Justin Miller, Director of Geotechnical Services
jcmiller@teamaet.com

Jacob Michalowski, PE, Principal Engineer - Pavements
jmichalowski@teamaet.com

Kristen Hanson, Engineer II - Pavements
khanson@teamaet.com

Minnesota Offices:

St. Paul
Albertville
Bemidji
Duluth
International Falls
Mankato
Marshall
Rochester

Additional Regional Offices:

WI, ND, SD, WY

AET is your trusted partner for pavement design and testing, geotechnical, environmental, materials, forensics, NDT, building sciences, and construction testing, observation, and inspection services. We serve the transportation, government, industrial, commercial, and telecommunications markets from our St. Paul headquarters and 20 other offices in MN, WI, WY, SD, and ND.

Our AASHTO Accredited Labs provide specialized services including: bituminous mix design; Superpave mix design; deflection testing (FWD); disc-shaped compaction testing (DCT); semi-circular bending test (SCB); cold in-place recycling (CIR) mix design/testing; stabilized full-depth reclamation (SFDR) mix design/testing; Hamburg Wheel Track (HWT); dynamic modulus testing (SPT); gyratory compaction; pavement condition

surveys; pavement evaluation; pavement management; seal coat compatibility & design; ground penetrating radar (GPR); mobile bituminous testing labs & special inspections. Additional laboratory testing services including petrography/chemistry and concrete/cementitious materials engineering, design and testing.

BRAUN INTERTEC CORP.

11001 Hampshire Avenue S
Minneapolis, MN 55438
(952) 995-2000 Fax (952) 995-2020
www.braunintertec.com

Robert J. Janssen, PE, President
bjanssen@braunintertec.com

Charles R. Brenner, PE, Director of Materials
cbrenner@braunintertec.com

Charles Cadenhead, PE, Principal Engineer
CCadenhead@braunintertec.com

Amy Grothaus, PE, Pavement Engineer
AGrothaus@braunintertec.com

Steven Benhardt, Asphalt Laboratory Supervisor
sbenhardt@braunintertec.com

Chris Kufner, PE, Pavement Engineer
ckufner@braunintertec.com

Heidi Olson, PE, Pavement Engineer,
holson@braunintertec.com

Pavement Engineering, Non-Destructive Pavement Testing (FWD), Ground Penetration Radar (GPR), Research Implementation, Bituminous Mix Design, Superpave Mix Design, Stabilized Full Depth Reclamation (SFDR) Mix Design, Cold In-place Recycling (CIR) Mix Design, Quality Assurance/Quality Control, MnDOT Intelligent Compaction/ Thermal Profiling, Soils & Material Testing & Analysis, Resilient Modulus of Soils and Asphalt, Dynamic Modulus, Storage Tank Investigation and Remediation, Geotechnical Engineering, Environmental Services, Materials Engineering

ASSOCIATE MEMBERS | ENGINEERING, TECHNICAL, CONSULTING

ASSOCIATE MEMBERS

INTERSTATE ENGINEERING, INC.

116 East Washington Avenue
 PO Box 316
 Fergus Falls, MN 56537
 (218) 739-5545 Fax (218) 739-4814
 ross.eberle@interstateeng.com
 www.interstateeng.com

Mike Bassingthwaite, PE ERVP

Alex Schwarzhoff, PE

C5Damon Devillers, PE CEO

Ross Eberle, PE

Corporate Headquarters:
 Jamestown, ND
 Branch Offices:
 Fergus Falls, MN; Belfield, ND; Beulah,
 ND; Billings, MT; Mandan, ND; Sidney, MT;
 Spearfish, SD; Wahpeton, ND
 Satellite Offices:
 Glasgow, MT (Fort Peck); Horace, ND; Red
 Lodge, MT; Sundance, WY; Valley City, ND;
 Williston, ND
 Consulting Engineers & Land Surveyors

**IUOE LOCAL 49/
 OPERATING ENGINEERS**

2829 Anthony Lane South
 Minneapolis, MN 55418
 (612)788-9441

Steve Piper, spiper@local49.org

Gene Grover, ggrover@local49.org

Marv Hose, mjhose@local49.org

Dan Snidarich, dsnidarich@local49.org

Nate Sogge, nsogge@local49.org

Junior Geislinger, lgeislinger@local49.org

Local 49 represents heavy equipment operators
 and mechanics in MN, ND & SD.

MOTION ENGINEERING, INC.

6040 Douglas Ave.
 Caledonia, WI 53402
 (414) 389-1778 Fax (414) 433-9788
 www.motionengineering.net

Mike Petrie, President

service@motionengineering.net

Lee Ann Lorrigan, Equipment Sales

equipment@motionengineering.net

Industrial Aggregate Specialists - We Make
 it Work! PARTS/EQUIPMENT/SERVICE: Over
 30+ years of servicing Asphalt Plants-Welding/
 Fabrication, Electrical Services, Equipment
 Installation, Insulation, Burner Tuning, Hot-
 Oil Piping, Silo & Drum Liners, Asphalt Plant
 Construction & Relocation, New/Used Parts &
 Equipment Sales, & Consulting.

PACIFIC GEOSOURCE

P.O. Box 98, Drain
 Drain, OR
 (877) 454-8096
 candice@pacificgeosource.com
 www.pacificgeosource.com

SPC ENGINEERING & TESTING, INC.

13307 Leyte Street NE
 Ham Lake, MN 55304
 (612) 250-8937

Todd Wille, PE, President

willetodd@msn.com

Bituminous Testing & Mix Designs, Construction
 Material Testing, Ride Specification,
 Profilograph Testing, Geotechnical/Drill Truck

SRF CONSULTING GROUP, INC.

3701 Wayzata Blvd. Suite 100
 Minneapolis, MN 55416-3791
 (763) 475-0010 Fax (763) 475-2429
 www.srfconsulting.com

Todd Polum, President/CEO

tpolum@srfconsulting.com

Robert Moore, Vice President

bmoore@srfconsulting.com

Curtis Sohn, Senior Director

csohn@srfconsulting.com

SRF is a full-service consulting firm offering
 award-winning engineering, planning and
 design services to clients in the public and
 private sectors.

STANTEC

2080 Wooddale Drive
 Woodbury, Minnesota 55125

ASSOCIATE MEMBERS

(651) 294-4582

Mark Panian, CHMM, Principal
Senior Environmental Compliance Specialist
Mark.Panian@stantec.com

11 East Superior Street
Duluth, Minnesota 55802
(218) 481-0215

**Kyle Morberg, Associate,
Environmental Engineer**
kyle.morberg@stantec.com

One Carlson Parkway North
Plymouth, Minnesota 55447
(763) 479-4229

**Jake Dalbec, Associate,
Senior Hydrogeologist**
jake.dalbec@stantec.com

Environmental Engineering, Environmental Permitting and Compliance Including Air, Industrial Wastewater, Stormwater, SPCC Planning, ASTs/USTs, Solid and Hazardous Waste Management, Wetlands, Phase 1 ESA, Environmental Review (EAW/ EIS), Industrial Hygiene, OSHA Compliance.

TRANSTECH

TransTech Systems, Inc.
900 Albany Shaker Road, Suite 2
Latham NY 12110
Corporate: 518-370-5558
www.transtechsys.com

John Lamond, Sales Manager
jlamond@transtechsys.com
518-560-0387

TransTech Systems are the original developers of non-nuclear electromagnetic impedance technology to determine the in-place density measurement of asphalt by way of the PQI 380 asphalt density gauge.

With over 30 years' experience in the development of this technology, the current TransTech Systems model offers fast, reliable, repeatable and accurate measurement of asphalt density in less than 3 seconds for a single test. Using a technology that does not require any special safety and health precautions or licensing for the use, storage or transportation of the measurement device, it offers a very cost effective and safe solution to the

on-site density measurement of hot mixed or warm mixed asphalt as it is being laid.

The PQI 380 technology is also considered environmentally preferable, which is a technology whose use is intended to mitigate or reverse the effects of human activity on the environment. As it uses electrical impedance generated from rechargeable batteries the impact on the environment is negligible. Sustainability is also supported as reducing the air voids content by just 1% can increase the pavement life expectancy by up to 10%.

TransTech Systems is a supporter of the Buy Clean, Buy America Act and the GSA Buy Clean Standards by manufacturing environmentally preferable testing techniques for asphalt standards. TransTech Systems has cemented its place in the road construction industry by developing the innovative use of capacitance technology and continuously working to support the asphalt paving industry. The PQI 380 fully complies with ASTM D7113-05 and AASHTO T343-12 and is used extensively across the country as a standard test method for the quality control of asphalt pavement during the construction process.

WA GROUP

7616 Currell Blvd, Suite 290
Woodbury, MN 55125
(612) 597-6300
www.walivebig.com

Michael Kluck
mkluck@walivebig.com

WIDSETH

610 Fillmore Street
Alexandria, MN 56308
(320) 762-8149
jeff.kuhn@widseth.com
www.widseth.com

Tim Ramerth, President/CEO
tim.ramerth@widseth.com

**Kent Rohr, Executive Vice President,
Director of Structural Engineering**
kent.rohr@widseth.com

Additional offices located at:
315 5th Street NW
Bemidji, MN 56601

ASSOCIATE MEMBERS

(218) 444-1859
7804 Industrial Park Road
Baxter, MN 56425
(218) 829-5117

216 S. Main Street
Crookston, MN 56716
(218) 281-6522

126 E Superior Street
Duluth, MN 55802
(218) 727-8481

1600 Central Avenue NE
East Grand Forks, MN 56721
(218) 773-1185

3535 S. 31st Street, Suite 203
Grand Forks, ND 58201
(701) 795-1975

704 E Howard Street
Hibbing, MN 55746
(218) 263-6868

1921 Excel Drive
Mankato MN 56001
507-519-3700

650 3rd Ave SE
Suite 10
Perham, MN 56573
(218) 346-4505

3777 40th Avenue NW, Suite 200
Rochester, MN 55901
(507) 292-8743

5368 266th St.
Wyoming, MN 55092
(651) 464-3130

Widseth is an engineering, land surveying, environmental, and architecture services firm with 12 offices in Minnesota and North Dakota and 250+ employees. Our engineering practice includes civil, structural, mechanical, and electrical engineers who work on a wide range of projects for public and private clients. Other services include architecture, land survey services, environmental, and water resources. We specialize in municipal, county, and township engineering, bridge design, and

related services. Roadways play an important role in how a city or region functions. Well-designed streets and highways provide efficient, safe transportation systems for goods and people while keeping drivers, travelers, and pedestrians safe. Widseth's engineers offer expertise that will improve traffic, safety, and mobility. Widseth was established in 1975. 2025 marked 50 years of dedicated service to our clients and communities. This milestone reflects our long-standing commitment to excellence, innovation, and building lasting relationships.

WSB

701 Xenia Avenue S, Suite 300
Minneapolis, MN 55416
(763) 541-4800 Fax (763) 541-1700
info@wsbeng.com
www.wsbeng.com

Bret Weiss, President/CEO
bweiss@wsbeng.com

Jon Chiglo, COO
jchiglo@wsbeng.com

**Mike Rief, Sr. Vice President,
Construction Services**
mrief@wsbeng.com

**Mark Watson, Direction of Material
Engineering and Testing**
mwatson@wsbeng.com

**Mark Osborn, Direction of
Geotechnical Engineering**
mosborn@wsbeng.com

**Jenna Wipper, Materials Testing
Laboratory Manager**
jwipper@wsbeng.com

WSB is a design and consulting firm specializing in engineering, community planning, environmental, and construction services. Our staff of 600 improve the way people engage with communities, transportation, infrastructure, energy and our environment. We offer services in over 30 complementary areas that seamlessly integrate planning, design and implementation. Our coast-to-coast client base is served from 14 offices in four states. We share a vision to connect your dreams for tomorrow to the needs of today—the future is ours for the making.

EQUIPMENT SUPPLIERS

ASTEC, INC

4101 Jerome Avenue
Chattanooga, TN 37407
(423) 867-4210 Fax (423) 867-3570
rfrank@astecindustries.com
www.astecinc.com

Robert Frank, Regional Sales Manager
(423) 322-8343
rfrank@astecindustries.com

Manufacture Asphalt Equipment and Plants,
Storage Silos, Slat Conveyors, Baghouses,

Drums, ColdFeed Bins Slat Conveyors, Dillman
Replacement Equipment

AMMANN AMERICA INC.

200 S. Orange Avenue Suite 1060
Orlando, Florida
(209) 449-0492
www.ammann.com

Carlos Cardenas, Sales Manager
carlos.cardenas@ammann.com

World's oldest and largest Asphalt equipment
manufacturer serving the global construction
markets since 1869. Ammann manufactures
Batch and Drum mix Plants, storage silo systems,
heating and blending systems and compaction
and paving equipment.

BOMAG AMERICAS, INC.

125 Blue Granite Parkway
Ridgeway, SC 29130
dave.dennison@bomag.com

BOYER TRUCKS

2425 Broadway St NE
Minneapolis, MN 55413
(612) 712-8804
jkeith@boyertrucks.com
www.boyertrucks.com

Jazmine Keith, Ford & Isuzu Sales
jkeith@boyertrucks.com | (612) 760-7501

Rob Reed, Operations Manager
rreed@boyertrucks.com

Mike Elvrum, Western Star/Freightliner Sales
melvrum@boyertrucks.com

Duane Wittowski, Heavy Truck Sales Manager
wwittowski@boyertrucks.com

Sales, New & Used Trucks, Service, Parts, Rental;
In addition to Ford, Western Star, Freightliner,
and Isuzu, Boyer also services all makes and
models of trucks, and supplies
truck parts worldwide. 6 dealership locations:
Minneapolis, Lauderdale, Savage, Sioux Falls,
Superior, Rogers, St. Michael

CWMF CORPORATION

701 Julep Road
Waite Park, MN 56387-1863
www.cwmfcorp.com
(320) 251-1306

Wally Olson, Sales Manager
sales@cwmfcorp.com

For over 35 years, CWMF has been offering
custom asphalt plant equipment, parts, and
service. Manufactured right here in Minnesota,
CWMF has all the equipment you need to
operate an asphalt plant: AC Tanks/Accessories,
Baghouses, Belt Conveyors, Drum Mixers, Dust
Control Solutions, Feed Bin Systems, RAP
Crusher Systems, Scalping Screens, and
Storage Silos.

ESCH CONSTRUCTION SUPPLY, INC.

561 Phalen Boulevard
St. Paul, MN 55130
(651) 487-1880 Fax (651) 487-1889
www.EschSupply.com

Dan Esch, President
DanE@EschSupply.com

James Nelson, Sales Manager

Mike Wallraff, Sales

Chase Owen, Sales

Dan Brown, Sales

ASSOCIATE MEMBERS

Matt Heller, Sales
Alex Gleeson, Sales
Phil White, Sales

Diamonds, Cutting Equipment, Parts & Repair to take on the toughest cuts with confidence. Large inventory of diamond saw blades, bits and asphalt router bits. Electric and gas saws and core drill rigs.

Additional locations in Milwaukee, Chicago & Denver providing fanatic customer service.

GENERAL EQUIPMENT & SUPPLIES, INC.

4600 Valley Industrial Blvd.
 Shakopee, MN 55379
 (952) 224-1500 Fax (952) 224-1570
 www.genequip.com

Jake Potter, Sales
 jpotter@genequip.com

Kris Akervik, Sales
 kakervik@genequip.com

Troy Westley, Sales
 twestley@genequip.com

Tom Ambrose, Sales
 tambroz@genequip.com

Aaron O'Shaughnessy, Sales
 aoshughnessy@genequip.com

Tyler Manolis, sales
 tmanolis@genequip.com

Chris Woodwick, PSSR
 cwoodwick@genequip.com

Steve Hornick, PSSR
 shornick@genequip.com

Chad VonBank, PSSR
 cvonbank@genequip.com

Joe Wilhelm, PSSR
 jwilhelm@genequip.com

Bob Vetter, Director of Parts
 rvetter@genequip.com

Damon Johnson, Director of Service
 djohnson@genequip.com

Tom Hamm, Regional Sales Manager
 thamm@genequip.com

Specializing in Aggregate Production Equipment, Superior Conveyor Products, Stacking & Transfer Conveyors, Sales & Leasing

of Construction Equipment, Operator Control Modules, Electrical Control, Breakers, Starters, Lippmann Aggregate Equipment - Crushers & Feeders, Generators - Sales & Rentals, CAT/Volvo, Specialized Fabrication of Bins, Hoppers, Conveyors, Fab Tec Aggregate Production Plants, Belt Scales - Belt Way, Feed Bins & Conveyors, Used Asphalt & Aggregate Equipment, Krebs Fines Recovery Systems, Krebs Engineering, Major Wire - Screen Cloth, VEI Loader Scales, Sales & Service for: Link-belt Cranes, Hitachi Construction/Mining Equipment

HAYDEN-MURPHY EQUIPMENT CO., INC.

9301 E. Bloomington Freeway
 Minneapolis, MN 55420
 (952) 884-2301
 sales@hayden-murphy.com
 www.hayden-murphy.com

Jeff Clarke, President

Troy von Holdt, Director of Sales

Phil Laumann, Road Construction Manager

Ty Carstedt, Rental Manager

Dealer of Heavy Equipment: BOMAG Pavers/Mills/Rollers/Compaction Equipment, Hyundai Heavy Equipment, Manitowoc Cranes, Grove Cranes, Link-Belt Excavators, Manitou Telehandlers, Gomaco Concrete Paving Equipment, Terex/ Fuchs Material Handlers, Rammer Hammers, Behnke Trailers.

NEW location:
 17369 US-10
 Elk River, MN 55330
 763-356-8777

INDUSTRIAL SUPPLY SOLUTIONS INC.

840 Julian Road
 Salisbury, NC 28147
 (612) 443-6931
 www.instrotek.com

Geoff Okerstrom
 geoff.okerstrom@issimro.com

INSTROTEK, INC.

1 Triangle Drive
 Research Triangle Park, NC 27709

EQUIPMENT SUPPLIERS | ASSOCIATE MEMBERS

ASSOCIATE MEMBERS

(919) 875-8371
www.instrotek.com

Josh Shank, Regional Sales Manager
Midwest Region
(419) 651-9935
jshank@instrotek.com

INTEX CORPORATION

5548 Barthel Industrial Drive, Suite 600
Albertville, MN 55301
(763) 428-8222 Fax (763) 428-8577
greg@intexcruisers.com
www.IntexCrushers.com

Mailing Address:

PO Box 260
Albertville, MN 55301

Wade Van Vooren, VP of Operations
Wade@IntexCrushers.com

Brian Buhl, VP of Finance
Brian@IntexCrushers.com

Greg Buhl, CEO
Greg@IntexCrushers.com

Custom Crushing and Screening Services

JEFF MARTIN AUCTIONEERS

PO Box 16809 Hattiesburg, MS 39404
2910 9th St. E., Glencoe, MN 55336
(320) 854-3510

Greg Waltz, Territory Sales Manager
(507) 828-2403
greg.w@jeffmartinauctioneers.com

Mike Munroe, Territory Sales Manager
(507) 517-1875
mike.m@jeffmartinauctioneers.com

Justin Larsen, Territory Sales Manager
(612) 708.9111

Jeff Martin Auctioneers is an auction company that delivers practical auction solutions for the sale of heavy construction, farm, transportation, and industrial equipment. These solutions include live, in person and online only auctions. Auction are conducted in a professional manner with a personal touch.

MAXWELL PRODUCTS

650 S. Delong Street

Salt Lake City, UT 84104
(801) 972-2090
www.maxwellproducts.com

Tom Cannon
tom@maxwellproducts.com

MC ASPHALT

385 Softley Road
Winnipeg, Manitoba R2J 0R7
(204) 963-4543
www.mcasphalt.com

Jeff Janssens
jjanssens@mcasphalt.com

METROPOLITAN GRAVEL

PO Box 289, 37 21st St
Newport, MN 55055
(651) 458-0170 Fax (651) 458-1168
west.t.houle@metrogravel.com

MIDSTATES EQUIPMENT & SUPPLY

606 County Road 1
Mountain Lake, MN 56159
(507) 427-3807 Fax (507) 427-3709
jvandyke@bargeninc.com
www.midstatesequipment.net

Brad Bargaen, Sales
(507) 381-2811

Jim Heltemes, Sales
(507) 381-2814

Alan Hirsch, Service & Support
(507) 381-2813
alan@midstatesequipment.net
Your First Choice for Materials, Equipment, Rentals, and Service in the Asphalt Maintenance Industry.

MILLER EXCAVATING, INC.

3741 Stagecoach Trail North
Stillwater, MN 55082
(651)439-1637 Fax (651) 351-7210
office@millerexc.com
www.millerexc.com

MOBA CORPORATION

1000 MOBA Dr
Peachtree City, GA 30269
(678) 817-9646 Fax (678) 817-0996

ASSOCIATE MEMBERS | EQUIPMENT SUPPLIERS



HAMM



RDO[®]
EQUIPMENT CO.

THE FUTURE OF ROADBUILDING

Real-time density. Automated compaction. Intuitive control. The HAMM HD+ 120i VIO-2-HF with Smart Compact Pro sets a new standard for asphalt performance. With our support, you get the machine, service and expertise to build better roads.



Burnsville | Dayton | Mankato | Marshall
Moorhead | Rochester | Sauk Rapids

RDOequipment.com

ASSOCIATE MEMBERS

www.moba.de

Paul Angerhofer, Product Manager
Pangerhofer@moba.de

Mobile Automation for feeder, grade and slope control for asphalt/concrete pavers. Pave IR systems to detect thermal segregation. 3-D Automation.

NUSS TRUCK & EQUIPMENT

12540 Dupont Avenue S
Burnsville, MN 55337
(952) 894-9595 Fax (952) 894-1619
www.nussgrp.com

Locations: Burnsville, Roseville, Monticello, Duluth, Saik Rapids, Mankato, Rochester

Jim Soderbeck, Field Sales Manager
jsoderbeck@nussgrp.com

Mike Sweeney, Director of Equipment Sales

Jeremiah Lennon, Service Manager

Chris Baumgardner, Parts Manager

Chris Pyle, Truck Sales Manager

Volvo: Wheel Loaders, Articulated Trucks, Hydraulic Excavators, Volvo Asphalt and Soil Compaction Products, Mack Trucks, Volvo Trucks

RB SCOTT COMPANY, INC.

1011 Short Street,
PO Box 65
Eau Claire, WI 54702
(715) 832-9792 Fax (715) 832-7767
www.rbscott.com

John Mickelson, CEO
john.mickelson@rbscott.com
(715) 456-7271

Katie Murphy, President
katie.murphy@rbscott.com
(715) 456-8210

Jose Perez, Vice President of Sales
jose.perez@rbscott.com
(414) 217-9308

Jeremy Voigt, Inside Sales Representative
Jeremy.voigt@rbscott.com
(320) 558-8100

Kollee Burkhardtsmeier, Parts Manager
kollee.burkhardtsmeier@rbscott.com
(715) 491-3663

Scott Mickelson, District Manager
scott.mickelson@rbscott.com
(715) 456-7288

Jason Rouleau, District Manager
jason.rouleau@rbscott.com
(507) 615-1246

Luke Edin, Service Manager
luke.edin@rbscott.com
(715) 456-7277

Headquarters: Eau Claire, WI Branch Office: 17403 County Road 75NW, Clearwater, MN 55320 Products & Services: Metso—Crushers, Screens, Mobile Screen Plants, Rubber Screens, OEM Parts & Manganese; StraightLine—Conveyors, Bins, Feeders; GreyHawk Design & Fabrication—Portable Plants and Modular Crushing and Screening Structures; MDS - Rip Rap and Topsoil Trommel Screens; Eagle Iron WorksWashing, Classifying, Dewatering, Mixing, and Scrubbing equipment; Schurco SlurrySlurry Pumps and Parts; SciTronics—Belt Scales, Metal Detectors; SW Scale- Belt Scales, Truck Scales, and BeltVue Scale System; Argonics— Belt Scrapers, Polyurethane Chute Liners; Tema Isenmann, Inc.—Polyurethane Screens and Magnetic Linings; Master PT - Speed Reducers and Accessories; Bearings, Motor Mounts, and Guards; Superior Components— Idlers, Pulleys, and Accessories; RCW- Cone Crusher Liners, Jaw Liners, VSI Shoes and Anvils, HIS Blow Bars; Flex-Hide- Conveyor Belting; Flexco-Belt Lacings and Installation Tools; Scheerer Bearing- Crushing and Vibratory Screening bearings.

RDO EQUIPMENT CO.

12500 DuPont Avenue S
Burnsville, MN 55337
(952) 890-8880 Fax (952) 890-7046
www.rdoequipment.com

Dan Lingen, General Manager

Blair Scheibel, Sales Manager

RDO Equipment/Integrated Controls
11030 Holly LN N Dayton MN 55369
(763) 294-7800. Fax (763) 416-0097
John Weber, General Manager
Scott Weness, Sales Manager

ASSOCIATE MEMBERS | EQUIPMENT SUPPLIERS

ASSOCIATE MEMBERS

RDO Equipment
 6700 Highway 10 NW
 Sauk Rapids, MN 56379
 (320) 259-6222 Fax (320) 259-6014
 John Weber, General Manager
 Jeff Dirkes, Sales Manager

1236 60th Avenue NW
 Rochester, MN 55901
 (507) 282-8888 Fax (507) 282-9079
 Dan Lingen, General Manager
 Blair Scheibel, Sales Manager
 1910 LorRay Drive
 North Mankato, MN 56003
 (507) 387-1836 Fax (507) 387-1838
 Dan Lingen, General Manager
 Blair Scheibel, Sales Manger

1710 E. College Drive
 Marshall, MN 56258
 (507) 532-0994 Fax (507) 532-0993
 Morgan Hullinger, General Manager
 Dusty Hartz, Sales Manager

2900 Main Avenue SE
 Moorhead, MN 56560
 (701) 526-2200 Fax (701) 526-2201
 Erik Sahr, Product Manager Wirtgen

ROAD MACHINERY & SUPPLIES CO.

5633 W. Highway 13
 Savage, MN 55378
 (952) 895-9595 Fax (952) 895-9564
 jsandin@rmseq.com
 www.rmseqequipment.com

Mike Sill II, CEO

Russell Sheaffer, President

Ben Schmidlein, VP Sales

Lance Arnett, VP Product Support

Trent Rezabek, Sales Manager

TJ Burns, General Manager, Rentals

Scott Kropiwka, Used Equipment

Construction equipment: Komatsu, Astec,

LeeBoy, BOMAG, Broce Broom, Terramac, NPK,

Genesis, Surestrike, Sandvik

Construction equipment: Komatsu, Astec,
 LeeBoy, BOMAG, Broce Broom, Terramac, NPK,
 Genesis, Surestrike, Sandvik

RUFFRIDGE JOHNSON EQUIPMENT

2065 Commerce Drive
 PO Box 437
 Centerville, MN 55038
 (612) 378-9558 Fax (612) 378-9385
 info@rjequip.com
 www.rjequip.com

Dave Hosch, General Manager

Bob Dousette, Parts Manager

Delton DeMarce, Service Manager

TEREX/CEDARAPIDS Crushers & Screens
 TEREX/SIMPLICITY Screens & Feeders
 BOMAG Pavers, Rollers & Mills
 CARLSON Pavers & Screeds
 Ecoverse, Environmental Processing Equipment
 ROSCO Distributors, Brooms, Patchers
 MIDLAND Shouldering Machines
 HD Asphalt Patchers
 Huber maintainers
 MASABA Conveyors & Plant Fabrication
 ROAD HOG Cold Planers
 ESCO Crusher Manganese

SURFACE TECH LLC

312 S Cedros Ave, Ste 200
 Solana Beach, CA 92075
 (720) 768-6854
 www.surface-tech.com

Mike Scardina

Michael.scardina@surface-tech.com

**SWANSTON
 EQUIPMENT COMPANIES**

Bobcat of Alexandria
 3818 Nevada St SW
 Alexandria, MN 56308
 (320)-460-8773

Bobcat of Fargo
 3450 West Main Avenue
 Fargo, North Dakota 58107
 Phone: (701) 293-7325

Bobcat of Minot
 3915 E Burdick Expy
 Minot, ND 58703
 (701)-837-9901

ASSOCIATE MEMBERS

Bobcat of Otter Tail
712 Frontier Dr
Fergus Falls, MN 56537
(218)-739-4505
www.swanston.com

Molly Swanston, Owner
molly.swanston@swanston.com

Jon Saetre, Vice President
jsaetre@swanston.com

Brock Leagjeld, MN Sales
brock.Leagjeld@swanston.com

Bryan Coons, MN Sales
bryan.coons@swanston.com

Asphalt Equipment-Rental/Sales, Asphalt Oil Supplier, Asphalt Plant Service, Compact Construction Equipment, Plant Components & Parts, Pollution Equipment, Scales & Weight Systems

UNIFIED SCREENING & CRUSHING - MN

3350 Dodd Road
Eagan, MN 55121
(651) 454-8835 Fax (800) 328-0225
sales.mn@unifiedscreening.com
www.unifiedscreening.com

Jim Georgantones, North Central Sales Manager

Dean Klocow, Customer Service Representative

Aaron Miskovich, Customer Service Representative

Complete Line of Screening Media Woven in the USA: Square, Slotted, Clean Screens, SuperClean Urethane Strips, Urethane/Rubber Tension Mats (Twinthane), Urethane/ Rubber Modular Systems, Punch Plate. Complete Line of Crusher Wear Parts: Jaws, Mantles, Bowl Liners, Concaves and Gyrotorys, VSI/HSI Parts including Shoes, Anvils, Blow Bars and more. Largest American Made Wire Cloth and Crusher Parts Inventory in North America.

VIKING AGGREGATE EQUIPMENT

3450 Hazelwood Ave
Webster, Minnesota 55088
(952) 652-2047
www.vikingaggregate.com

Todd Widmer

twidmer@vikingaggregate.com

Jeff Nelson
jnelson@vikingaggregate.com

Aggregate Equipment and Parts Distribution

WARNING LITES OF MN

4700 Lyndale Avenue N
Minneapolis, MN 55430
(612) 521-4200 Fax (612) 521-0646

Tim Lewis, Operations Manager
tlewis@warninglitesmn.com

Dan Anderson, Traffic Control Estimating
danderson@warninglitesmn.com

Mark Jensen, Traffic Control Estimating
mjensen@warninglitesmn.com

Eric Bertossi, Traffic Control Estimating
ebertossi@warninglitesmn.com

Dave Nelson, Striping Estimator
dnelson@warninglitesmn.com

Brian Luftman, Permanent Signing Estimator
bluftman@warninglitesmn.com

WAYNE TRANSPORTS, INC

14345 Conley Ave.
Rosemount, MN 55068
651-438-6413

Brad Guggisberg
Brad@waynetransports.com
(651)438-6412

Chris Perseke
cperseke@waynetransports.com
(651)438-6413

Wayne Transports, Transportation of Asphalt & Emulsion, and other bulk commodities.

ZIEGLER CAT

901 West 94th Street
Minneapolis, MN 55420
(800) 352-2812 Fax (952) 887-5820
www.zieglercat.com

William M. Hoeft, President

Jeff Drake, Chief Operating Officer

Chris Rice, VP Construction and Mining Sales

Alan El-Darazi , Director of Sales

Thomas Abell, Product Manager GCI/Paving

ASSOCIATE MEMBERS | EQUIPMENT SUPPLIERS

ASSOCIATE MEMBERS

Cat Paving Products (Soil & Asphalt Compactors, Pavers, Cold Planers & Reclaimers/Stabilizers); Cat Construction Equipment; Cat Work & Tools Attachments; Weiler Pavers, Wideners, Windrow Elevators, Compactors, Screeds; Trail King Trailers, Bottom Dump, Side Dump, Live Bottom & Tag

Trailers; Towmaster Trailers; Trimble/Accugrade GPS Systems, GPS Machine Control and Training.

Minnesota Locations: Ada, Bemidji, Brainerd, Buhl, Columbus, Crookston, Duluth, Fergus Falls, Jackson, Mankato, Marshall, Minneapolis, Rochester, Shakopee, St. Cloud and Willmar

INDUSTRY PARTNERS

ALLSTATES PAVEMENT RECYCLING & STABILIZATION

14280 James Road
Rogers, MN 55374
(360) 391-840www.aprsgroup.net

Bryan Ray, Director of Business Development
bray@aprsgroup.net

Asphalt Milling, 3D Milling, Micro Milling, Detail Milling, Asphalt Reclaiming, Full

Depth Reclamation, Stabilized Full Depth Reclamation, Soil Stabilization, Cold In-Place Asphalt Recycling, Cold Central Plant Recycling, Rumble Strips, Minor Grading Work, Material Trucking, Dust control and Value Engineering

ANTIGO CONSTRUCTION, INC.

2520 Clermont Street
Antigo, WI 54409
(715) 627-2222
ac@antigoconstruction.com
www.antigoconstruction.com

Matt Shinners, President

Chris Shinners, Secretary

Jason Jansen, Project Manager

Abe Shinners, Project Manager

Mark Reimer, Estimating Manager

David West, Project Manager

Concrete Pavement Cracking & Seating or Rubblizing for Overlay; Concrete Pavement Breaking for Removal/Recycling.

APPLIED MATERIAL SOLUTION

1001 E Centralia St
Elkhorn, WI 53121

Paul Hartzler
phartzler@amsi-usa.com

Applied Material Solutions offers colloidal silica, antifoam and defoamer products, hydrophobic treated silica, corn oil demulsifiers, and toll manufacturing. AMS is headquartered in Elkhorn, WI, with manufacturing plants in Elkhorn and Burlington, WI and Rockton, IL.

CORRECTIVE ASPHALT MATERIALS

300 Daniel Boone Trail
South Roxana, IL 62087
(618) 254-3855
colleen@cammidwest.com
www.cammidwest.com

Jack Witte, President
jack@cammidwest.com

Colleen West, Regional Sales Director
colleen@cammidwest.com

Reclamite Maltene Based Rejuvenating Agent
Agent CRF Maltene Based Restorative Seal

ESS BROTHERS & SONS, INC.

9350 County Road 19
Loretto, MN 55357-9555
(763) 478-2027 Fax (763) 478-8868
Trent@essbrothers.com
www.essbrothers.com

ASSOCIATE MEMBERS

Bill Quintus, Sales
bill@essbrothers.com

Greg Kilgore, Sales
gkilgore@essbrothers.com

Mike Lenarz, Sales
mike@essbrothers.com

Construction Casting Supplier, Manhole Riser Ring Supplier, Inlet Protection Products, HDPE Rings, Seals, Fabrication Shop

FAHRNER ASPHALT SEALERS, LLC

6615 US Highway 12 W
Eau Claire, WI 54703
(715) 874-6070 Fax (715) 874-6717
www.fahrnerasphalt.com

Kevin Kruckow, Co-President
Kevin.Kruckow@fahrnerasphalt.com

Mike Frodl, Co-President
Mike.frodl@fahrnerasphalt.com

Jeff Sheehan - Regional Vice President
Jeff.Sheehan@fahrnerasphalt.com

Pavement maintenance contractors: saw seal, joint adhesive, pavement markings, hydroblasting, chip seal, slurry seal, microsurfacing, crack sealants and patching, Bridget Deck Epoxy, MMA Flood Seal, Bridge Deck Maintenance

HHTC, INC DBA PIRTEK MIDWAY

2125 Energy Park Drive
St Paul, Minnesota 55108-1507
(651) 641-1414 Fax (651) 641-0707
www.pirtekusa.com/midway

Craig A. Heitkamp, President
cheitkamp@pirtekmn.com

Eric Schultz, Sales Manager
eschultz@pirtekmn.com
2nd Location: Pirtek Plymouth
11350 Highway 55
Plymouth, MN 55441
(763) 475-0475 Fax (763) 551-9081

Mobile and in-house hose replacement services specializing in heavy duty hydraulic equipment, industrial machinery and plant maintenance services. HOSE REPLACEMENT IS OUR BUSINESS.

MIDSTATE RECLAMATION, INC.

21955 Grenada Avenue
Lakeville, MN 55044
(952) 985-5555
www.midstatecompanies.com

Mike Swing, General Manager
mikes@midstatecompanes.com

Dan Schelhammer, P.E., Business Development Director
dan.schellhammer@surface-cycle.com

Asphalt Milling, 3D Milling, 3D Design Services, Detail Milling, Asphalt Reclaiming, Full Depth Reclamation, Stabilized Full Depth Reclamation, Soil Stabilization, Cold In-Place Asphalt Recycling, Cold Central Plant Recycling, Heavy Haul Trucking, Value Engineering, and Carbon Credits

OPEN ROAD CARRIERS, LLC (FORMERLY DONOVAN ENTERPRISES)

10091 Dogwood St NW, Ste 200
Minneapolis, MN 55448
(320) 251-1213
www.openroadcarriers.com

Henry Li, CEO/Owner
henry@jddonovan.com

Open Road Carriers is the Midwest's premier company specializing in transportation and selling of asphalt (cement and emulsion). We are DBE, TGB, and CERT certified.

PURPLE WAVE AUCTION

825 Levee Drive
Manhattan, KS 66502
(866) 608-9283 Fax (785) 222-4702
www.purplewave.com
association@purplewave.com

Pat Hoffman, District Sales Director
pat.hoffman@purplewave.com
(605) 212-7530

Jason Solomonson, Territory Sales Manager Minneapolis
jason.solomonson@purplewave.com

Justin Smith, Territory Sales Manager SE MN
justin.smith@purplewave.com

ASSOCIATE MEMBERS

Mike Urbach, Territory Sales Manager Northern MN
mike.urbach@purplewave.com

Sam Nash, Territory Sales Manager SW MN
sam.nash@purplewave.com

The easiest, most straightforward way to buy and sell heavy equipment. Purple Wave is an online auction marketplace that sells your equipment to the highest bidder. With an experienced staff, unmatched service and the largest community of registered bidders, you can be confident that when you work with us, you'll get the results you need.

RENUCORE BY CERTAINTEED

20 Moores Road
Malvern, PA 19355
507-330-4330

Maure Creager - Circular Economy Manager
Avni Patel - Circular Economy Specialist

RenuCore™ by CertainTeed is an innovative, high-performance asphalt modifier produced with nearly 100% reclaimed materials, helping reduce asphalt costs.

RITCHIE BROS. AUCTIONEERS (AMERICA) INC.

6000 Frontage Road W
Medford, MN 55049
(507) 774-5050 Fax (507) 774-5060
pfanberg@ritchiebros.com
www.rbauktion.com

P.J. Fanberg, Territory Manager
pfanberg@ritchiebros.com

John Hegel, Territory Manager
jhengel@ritchiebros.com

Matt Jensen, Territory Manager
mjensen@ritchiebros.com

Randy Schmoll, Territory Manager
rschmoll@ritchiebros.com

Steve Speer, Regional Sales Manager
sspeer@ritchiebros.com

Ritchie Bros. Auctioneers is a global leader in asset disposition, specializing in the sale of heavy equipment, trucks, and industrial assets through live unreserved auctions and online marketplaces. With over 60 years of

experience, Ritchie Bros. connects buyers and sellers across the construction, agriculture, transportation, and energy sectors, offering trusted solutions for consignors and a massive selection for buyers. Backed by a reputation for transparency, integrity, and market expertise, Ritchie Bros. helps businesses of all sizes turn surplus equipment into working capital quickly and efficiently.

ROCK ON TRUCKS INC.

3100 7th Street S
Waite Park, MN 56387
(320) 230-2998 Fax (320) 230-2912
www.rockontrucks.com

Krystal Vierkant, Owner/CEO
krystal@rockontrucks.com

Kevin Vierkant, Operations Manager
kevin@rockontrucks.com

Jeff Buersken, Estimating
jeff@rockontrucks.com
Dispatch@rockontrucks.com

Trucking/Trucking Broker—Ends, Sides, Belly Dumps, Dump Trucks, Flatbeds, Step Deck, Reefers & Dry Vans Certified DBE WBE in MN, IA, ND, SD, WI, trucking in all U.S.

SAFETY SIGNS LLC

19784 Kenrick Avenue
Lakeville, MN 55044
(952) 469-6700 Fax (952) 469-6689
www.safetysigns-mn.com

Sue Blanchard, President
sueblanchard@safetysigns-mn.com

Jay Blanchard, Vice President
jayblanchard@safetysigns-mn.com

Mark Hayes, Estimator
markhayes@safetysigns-mn.com

Reed Leidle, Operations Manager
reed@safetysigns-mn.com
Traffic Control, Permanent Signs, Pavement Marking, Pavement Marking Removals, and Personal/Contractor Safety Products.

Safety Signs LLC, a family owned and locally focused company, is dedicated to building long lasting relationships by providing a wide range of products and superior services.

LEGAL

BEST & FLANAGAN, LLP

60 S. 6th Street, Suite 2700
 Minneapolis, MN 55402
 (612) 339-7121 Fax (612) 339-5897
 www.bestlaw.com

Justin P. Short, Partner
 jshort@bestlaw.com

Best & Flanagan is a full service law firm in Minneapolis that represents prime contractors, subcontractors and specialty contractors on highway-heavy, bridge and road construction projects throughout Minnesota, North Dakota, Iowa, Wisconsin and Colorado.

**FABYANSKE WESTRA
HART & THOMSON**

333 South Seventh Street, Suite 2600
 Minneapolis, MN 55402
 (612) 359-7600 Fax (612) 359-7602
 www.fwhtlaw.com

Mark Becker
 (612) 359-7620
 mbecker@fwhtlaw.com

Matt Collins
 (612) 359-7610

mcollins@fwhtlaw.com

Jesse Orman
 (612) 359-7637
 jorman@fwhtlaw.com

Dean Thomson
 (612) 359-7624
 dthomson@fwhtlaw.com

Law firm providing legal services to the construction industry, including contract review, risk management, and dispute resolution.

LARKIN HOFFMAN

8300 Norman Center Drive, Suite 1000
 Minneapolis, MN 55437-1060
 (952) 896-3308 Fax (952) 896-3333
 info@larkinhoffman.com
 www.larkinhoffman.com

Christopher Yetka
 cyetka@larkinhoffman.com

Rob A. Stefanowicz
 rstefanowicz@larkinhoffman.com

Bryan Huntington
 bhuntington@larkinhoffman.com

Inga Kingland
 ikingland@larkinhoffman.com

Sarah Greening
 sgreening@larkinhoffman.com

Maureen Lodoen
 mlodoen@larkinhoffman.com

Legal services, insurance coverage and recovery for policyholders

MOSS & BARNETT

150 South Fifth Street Suite 1200
 Minneapolis, MN 55402
 (612) 877-5255 Fax (612) 877-5033
 www.lawmoss.com

Aaron A. Dean, Attorney
 aaron.dean@lawmoss.com

OLSON CONSTRUCTION LAW, P.C.

20730 Holyoke Avenue, Suite 202
 P.O. Box 520
 Lakeville, MN 55044
 (651) 298-9884
 trolson@oc-law.com
 www.olsonconstructionlaw.com

Tom Olson, Construction Attorney
 trolson@oc-law.com

Rielly Lund, Construction Attorney
 rlund@oc-law.com

Brian Jesse, Construction Attorney
 bjesse@oc-law.com

Olson Construction Law was founded in 1993 by Tom Olson with the sole purpose of assisting contractors. Our attorneys work with contractors from the bid to the build and beyond, with the goal of helping contractors minimize risk and maximize profit.

ASSOCIATE MEMBERS

WELLE LAW P.C.

8011 34th Avenue South, Ste 415
 Bloomington, MN 55425
 (612) 656-9019 Fax (612) 656-3019
 josh@wellelaw.com
 www.WelleLaw.com

Josh Welle, Construction Attorney
 josh@wellelaw.com

Emily Mugaas, Construction Attorney
 emily@wellelaw.com

Paul Meyer, Construction Attorney of Counsel
 paul@wellelaw.com

At Welle Law we focus solely on construction law, allowing us to better understand the tireless goals and demands of low-bid contracting. Welle Law was founded by attorney Josh Welle, who has worked extensively with paving contractors. For more information about us, please visit our website.

REFINERIES, CHEMICAL ADDITIVES & OIL PRODUCT SUPPLIERS

ARKEMA

6502 S Yale Ave, Ste 100
 Tulsa, OK 74136
 (918) 960-3800
 https://specialtysurfactants.arkema.com

Heather O'Hara-Account Manager
 Heather.OHara@arkema.com
 (863) 800-4685

ArrMaz Products Inc. is the U.S. arm of Arkema's Specialty Surfactants business. Building on its unique set of expertise in materials science, Arkema offers a portfolio of first-class technologies to address ever-growing demand for new and sustainable materials. Arkema is a global leader in specialty materials and operates in some 55 countries with 21,150 employees worldwide, reporting 2024 sales of approximately \$9.5 billion.

CARGILL ASPHALT SOLUTIONS

15407 McGinty Rd W
 Wayzata, Mn 55391
 (952) 742-0440
 anova-asphalt@cargill.com
 www.cargill.com/asphaltsolutions

Justin Black
 J_black@cargill.com

Susan Listberger
 susan_listberger@cargill.com

Dan Staebell
 dan_staebell@cargill.com

Khaled Hasiba
 Khaled_hasiba@cargill.com

CENOVUS ENERGY INC.

225 6 Ave SW
 Calgary, Alberta T2P 0M5
 (403) 766-2000 Fax (403) 766-7600
 martin.ray@huskyenergy.com
 www.cenovus.com

Tony Wanta, Marketing—Asphalt and Residuals
 Tony.Wanta@huskyenergy.com
 (715) 398-7161 ext. 13, Cell (218) 343-7401

Chad Hanson, B. Comm
Asphalt and Emulsion Sales Representative
 Chad.Hanson@huskyenergy.com
 Cell (306) 280-2334, Fax (306) 934-5826

Refinery: Superior, WI.
 Asphalt Terminals: Superior, WI; Rhinelander, WI; Crookston, MN; Winnipeg, MB

EAST SIDE OIL COMPANY, INC

625 Lincoln Avenue Southeast
 St Cloud, MN 56304
 (320) 252-9711 Fax (320) 252-0653
 mail@firstfuelbank.com
 www.eastsideoilcompanies.com

FLINT HILLS RESOURCES, LP

PO Box 64596
 St. Paul, MN 55164
 (651) 480-3838 Fax (651) 480-3874
 www.fhrasphalt.com

Charles Boan, General Manager

Charles.Boan@fhr.com
 (651) 480-3831, Cell (612) 840-9143

Randy Holladay, Account Manager

Randy.holladay@fhr.com
 Cell 612-432-4259

Flint Hills Resources, LP is a producer of paving and roofing asphalt products. We strive to provide our customers with an efficient and reliable supply of asphalt products and are focused on safe and environmentally responsible operations.

Terminals: Rosemount, MN; Savage, MN; St. Paul, MN; Marshall, MN; West Fargo, ND; Stevens Point, WI; Green Bay, WI; Dubuque, IA; Davenport, IA; Algona, IA; Omaha, NE; and Grand Island, NE.

HENRY G. MEIGS LLC

1220 Superior Street
 Portage, WI 53901-9072
 (608) 742-5354 Fax (608) 742-1805
 kschakelman@hgmeigs.com
 www.hgmeigs.com

Ken L. Schakelman, Regional Sales Manager

kschakelman@hgmeigs.com
 (920) 723-9624

H.G. Meigs LLC is a producer of quality asphalt products for the paving industry, including PG binder, polymer modified asphalts, asphalt emulsions, stabilizing engineered emulsions and cutbacks. We specialize in engineered products such as J-BAND and Rapid Penetrating Emulsions designed to help asphalt pavement owner preserve their investment. Founded in 1935 with Wisconsin terminal locations in Portage, Abbotsford, and Eau Claire.

INGEVITY

5255 Virginia Avenue
 North Charleston, SC 29406
 (843) 746-8106 Fax (843) 746-8165
 www.behindthescreed.com

Don Moors, Technical Sales Rep (Emulsifiers)

Donald.Moors@ingevity.com

Craig Reynolds, Technical Marketing Manager

(WMA, Evotherm, LAS, Evoflex)
 craig.reynolds@ingevity.com, 331-229-2175

Evotherm - Warm Mix Asphalt Technology; Modifiers - Evoflex
 Morlife/PaveBond - Liquid Anti-Strip Additives
 Indulin - Asphalt Emulsifiers; thermoplastic striping, high performance paint, preformed thermoplastic and glass beads

LUBE-TECH

900 Mendelssohn Ave N
 Golden Valley, MN 55427
 (651) 636-7990 Fax (651) 633-7051
 www.lubetech.com

Quinn Reilly, Regional Sales Manager

quinnrei@lubetech.com, (763) 417-1317

Jeff Henderson, Sales Director

jeffhen@lubetech.com, (651) 202-0171

At Lube-Tech, we're committed to making tomorrow better than today. Our continued pursuit of excellence has made us the leader in OEM powersports lubrication and a recognized brand in commercial vehicle fluids and chemicals. Our partnership with ExxonMobil makes us a one-stop shop for all of your fluid related needs, including lubricants, chemicals, equipment, and recycling.

MANSFIELD SERVICE PARTNERS

260 St. John St.
 Loretto, MN 55357
 (866) 275-5433
 www.mansfield.energy

Joe Hangge, Sales & Operations Director

joe.hangge@mansfield.energy

Jim McClellan, Sales Manager

jim.mcclellan@mansfield.energy
 We specialize in providing the right products to our customers which includes on and off road diesel, gas, DEF and additives. We provide service from tank deliveries to unit mobile filling.

MARATHON PETROLEUM

301 St. Paul Park Road
 St. Paul Park, MN 55071

(651) 458-2738
www.marathonpetroleum.com

Terry Kobernusz,
Senior Territory Manager Asphalt
TLKobernusz@marathonpetroleum.com
(612) 499-4237

MIELKE OIL

401 13th Ave NW
Little Falls, MN 56345
(800) 592-0004
www.mielkeoil.com

MN PETROLEUM MARKETERS ASSN

301 St. Paul Park Road 3244
St. Paul, MN 55126
(651) 484-7227 Fax (651) 481-9189

Kevin, Thoma
kthoma@mpmaonline.com

**PETROCHOICE
LUBRICATION SOLUTIONS**

4815 Hazelwood Ave.
Northfield MN 55057
(612) 505-8080

Marshall Martin, Regional Sales Manager
mmartin@petrochoice.com

Aaron Kurth, Auto-Lube Specialist
akurth@petrochoice.com

**Grant Kuseske, Lubricant
Territory Sales Manager**
gkuseske@petrochoice.com

**Brent Magnuson, Lubricant
Territory Sales Manager**
bmagnuson@petrochoice.com

Lubricant Distribution; Technical Services;
Automatic Lubrication System - Design,
Installation and Service; Oil Analysis; Custom
Storage and Handling Programs; Fleet and
Equipment Reviews; Fleet Maintenance
Software; Product Consolidation; Filtration
and Reclamation

ASSOCIATE MEMBERS

REFINERIES, CHEMICAL ADDITIVES & OIL PRODUCT SUPPLIERS

**Five Skies Training and
Consulting LLC**

We offer referral services to help Contractors and that are seeking to diversify their workforce contact qualified Native Americans, Women, Veterans and other Minorities that are looking for careers in the Trades.

Looking to diversify your workforce?

Need help meeting your hiring goals?

Scan the QR Code for information about subscription options and services. We have options to fit your needs and your budget.



Trade Pros

Certified DBE in MN and WI



transwest.com

PAVING THE WAY FOR YOUR SUCCESS

More than just trucks. Transwest is your partner in productivity, with brands you can trust and service you can count on.



MINNEAPOLIS
612.378.6000
2425 Broadway St NE,
Minneapolis, MN 55413

LAUDERDALE
651.538.5800
2500 Broadway Dr,
Lauderdale, MN 55113

ST. MICHAEL
612.676.3800
4631 Odessa Ave NE,
St. Michael, MN 55376

SAVAGE
952.836.6900
8025 W Hwy 101,
Savage, MN 55378

SUPERIOR
715.394.2460
1202 Susquehanna Ave
Superior, WI 54880

MINNESOTA DEPARTMENT OF TRANSPORTATION

OFFICE OF THE COMMISSIONER

Transportation Building, MS 100
 395 John Ireland Boulevard
 St. Paul, MN 55155-1899
 651-296-3000
 info.dot@state.mn.us
 www.dot.state.mn.us

TRANSPORTATION COMMISSIONER

Nancy Daubenberger
 (651) 366-4800
 MnDOT_Commissioner@state.mn.us

**DEPUTY COMMISSIONER/
 CHIEF ENGINEER**

Jean Wallace
 651-366-4800
 jean.wallace@state.mn.us

CHIEF FINANCIAL OFFICER

Josh Knatterud-Hubinger
 651-366-4800
 josh.knatterud-hubinger@state.mn.us

CHIEF OF STAFF

Sara Severs
 (651) 366-3402
 Sara.Severs@state.mn.us

CHIEF COUNSEL

Jim Cownie
 651-366-4800
 James.Cownie@state.mn.us

**SUSTAINABILITY, PLANNING
 AND PROGRAM MANAGEMENT**

Jon Solberg
 651-366-4800
 jon.solberg@state.mn.us

ENGINEERING SERVICES DIVISION

**Assistant Commissioner
 Michael Beer**
 (651) 775-1120
 michael.beer@state.mn.us

OPERATIONS DIVISION

**Assistant Commissioner
 Jay Hietpas**
 (651) 366-4825
 jay.hietpas@state.mn.us

STATE AID DIVISION

**Assistant Commissioner
 Kristine Elwood**
 (651) 366-4831
 kristine.elwood@state.mn.us

**POLICY AND GOVERNMENT
 AFFAIRS DIVISION**

**Government Affairs Director
 Erik Rudeen**
 (612) 430-2487
 erik.rudeen@state.mn.us

**Communications & Public Engagement
 Director**

Chris Krueger
 (651) 296-3000

**PUBLIC ENGAGEMENT &
 CONSTITUENT**

**Deputy Director
 Renee Raduenz**
 (651) 366-4803
 renee.raduenz@state.mn.us

**Audit Director
 Heidi Henry**

(612) 799-6003
 heidi.henry@state.mn.us

METRO DISTRICT

1500 W. County Road B2
 Roseville, MN 55113-3174
 (651) 234-7500
 metroinfocenter.dot@state.mn.us

**District Engineer
 Michael Barnes**

(651) 234-7700
 michael.barnes@state.mn.us

**Deputy District Engineer
 Sheila Kauppi**

612-499-9923
 sheila.kauppi@state.mn.us

**State Aid Engineer
 Dan Erickson**

(651) 234-7763
 dan.erickson@state.mn.us
**Program Delivery Office Director
 Jay Hietpas**

MINNESOTA DEPARTMENT OF TRANSPORTATION

651-503-2850
Jay.Hietpas@state.mn.us

Planning, Program Management & Transit Office Director
Molly McCartney
(651) 775-0326
molly.mccartney@state.mn.us

Executive Assistant to Business Operations & Services Director and Program Delivery Director
Anita Spading
(612) 234-7704
anita.spading@state.mn.us

DISTRICT 1 - DULUTH
1123 Mesaba Avenue
Duluth, MN 55811
(218) 725-2700 Fax (218) 725-2800

District Engineer
Duane Hill
(218) 725-2704
duane.hill@state.mn.us

Assistant District Engineer Operations
Perry Collins
(218) 725-2827
perry.collins@state.mn.us

Assistant District Engineer State Aid
Derek Fredrickson
(218) 725-2744
derek.fredrickson@state.mn.us

Assistant District Engineer Program Development
Michael Kalnbach
(218) 725-2745
michael.kalnbach@state.mn.us

Assistant District Engineer Major Projects
Pat Huston
(218) 348-9902
patrick.huston@state.mn.us

DISTRICT 1 - VIRGINIA
101 N. Hoover Road
Virginia, MN 55792
(218) 742-1100 Fax (218) 749-7709

DISTRICT 2 - BEMIDJI
3920 Highway 2 West
Bemidji, MN 56601
(218) 755-6500 Fax (218) 755-6512

District Engineer
John (JT) Anderson
(218) 755-6549
j.t.anderson@state.mn.us

Assistant District Engineer Program Delivery
Bill Pirkl
(218) 766-3252
bill.pirkl@state.mn.us

Assistant District Engineer Program Development
Darren Laesch
(218) 755-6553
darren.laesch@state.mn.us

Assistant District Engineer State Aid
Brian Ketring
(218) 766-5930
brian.ketring@state.mn.us

Assistant District Engineer Operations
Paul Konickson
(218) 277-7963
paul.konickson@state.mn.us

DISTRICT 2 - CROOKSTON
1320 Sunflower Street
Crookston, MN 56716
(218) 277-7950 Fax (218) 277-7954

DISTRICT 3 - BAXTER
7694 Industrial Park Road
Baxter, MN 56425-8096
(218) 828-5700
(800) 657-3971 Fax (218) 828-5814

District Engineer
Mike Ginnaty
(320) 293-8548
mike.ginnaty@state.mn.us

Assistant District Engineer Construction

MINNESOTA DEPARTMENT OF TRANSPORTATION

Tony Hughes
 (218) 828-5704
 anthony.hughes@state.mn.us

**Assistant District Engineer
 State Aid
 Angie Tomovic**
 (218) 232-8981
 andjela.tomovic@state.mn.us

**Assistant District Engineer
 Maintenance
 Jamie Hukriede**
 (218) 820-2412
 jamie.hukriede@state.mn.us

**Assistant District Engineer
 Program Delivery and Traffic
 Jim Hallgren**
 (218) 828-5797
 james.hallgren@state.mn.us

DISTRICT 3 – ST. CLOUD
 3725 12th Street N
 St. Cloud, MN 56303
 (320) 223-6500
 (800) 657-3961 Fax (320) 223-6580

DISTRICT 4 - DETROIT LAKES
 1000 Highway 10 W
 Detroit Lakes, MN 56501
 (218) 846-3600
 (800) 657-3984 Fax (218) 847-1583

**District Engineer
 Shiloh Wahl**
 (218) 846-3603
 shiloh.wahl@state.mn.us

**Operations/Program Delivery Manager
 Justin Knopf**
 (218) 846-7968
 Justin.Knopf@state.mn.us

**Program Development Manager
 Tom Lundberg**
 (218) 846-3634
 thomas.lundberg@state.mn.us

District State Aid Manager

Nathan Gannon
 (218) 846-3607
 nathan.gannon@state.mn.us

DISTRICT 4 - MORRIS
 51 Minnesota Drive
 Morris, MN 56267
 (800) 657-3984 Fax (320) 589-7702

DISTRICT 6 - ROCHESTER
 2900 48th Street NW
 Rochester, MN 55901-5848
 (507) 286-7500 Fax (507) 285-7355

**District Engineer
 Mark Schoenfelder**
 (507) 286-7501
 mark.schoenfelder@state.mn.us

**Assistant District Engineer
 Program Delivery**
 Greg Paulson
 (507) 208-3938
 greg.paulson@state.mn.us

**Assistant District Engineer
 State Aid
 Fausto Cabral**
 (507) 251-1930
 fausto.cabral@state.mn.us

**Assistant District Engineer
 West Operations
 Mark Panek**
 (507) 363-1179
 mark.panek@state.mn.us

**Assistant District Engineer
 East Operations
 Torey Hunkus**
 651-435-0383
 Victoria.Hunkus@state.mn.us

**Assistant District Engineer
 Program Support
 Heather Lukes**
 507-286-7552
 heather.lukes@state.mn.us

MINNESOTA DEPARTMENT OF TRANSPORTATION

DISTRICT 6 - OWATONNA

1010 21st Avenue NW
 Owatonna, MN 55060-1005
 (507) 446-5500 Fax (507) 455-5848

DISTRICT 7 - MANKATO

2151 Bassett Drive
 Mankato, MN 56001-6888
 (507) 304-6100
 (800) 657-3747 Fax (507) 304-6119

District Engineer

Greg Ous
 (507) 304-6101
 greg.ous@state.mn.us

**Assistant District Engineer
 Pre-construction**

Zak Tess
 (507) 317-8168
 zachary.tess@state.mn.us

**Assistant District Engineer
 Construction**

Victoria Nill
 (507) 327-7149
 victoria.nill@state.mn.us

**Assistant District Engineer
 State Aid**

William Rabenberg
 (507) 381-2563
 willy.rabenberg@state.mn.us

Assistant Maintenance Engineer

Scott Morgan
 (507) 327-6589
 scott.morgan@state.mn.us

DISTRICT 7 - WINDOM

180 S. County Road 26
 Windom, MN 56101 -1868

DISTRICT 8 - WILLMAR

2505 Transportation Road
 Willmar, MN 56201
 (320) 231-5195 Fax (320) 214-6305

District Engineer

Jon Huseby
 (320) 231-5497

jon.huseby@state.mn.us

**Assistant District Engineer
 Maintenance Operations**

Kelly Brunkhorst
 (320) 231-5497
 kelly.brunkhorst@state.mn.us

**Assistant District Engineer
 Construction**

Paul Rasmussen
 (320) 894-3248
 p.rasmussen@state.mn.us

**Assistant District Engineer
 Program Delivery**

Susann Karnowski
 (320) 444-7800
 susann.karnowski@state.mn.us

**Assistant District Engineer State Aid
 Todd Broadwell**

(320) 214-6425
 todd.broadwell@state.mn.us

DISTRICT 8 - MARSHALL

1800 E. College Drive
 Marshall, MN 56258
 (507) 537-6146 Fax (507) 537-3800

DISTRICT 8 - HUTCHINSON

1400 Adams Street SE
 Hutchinson, MN 55350
 (320) 234-8480 Fax (320) 234-6971

**OFFICE OF MATERIALS
 & ROAD RESEARCH**

1400 Gervais Avenue, MS 645
 Maplewood, MN 55109-2044
 (651) 366-5592 Fax (651) 366-5461
 materialslab.dot@state.mn.us

**Pavement Engineer
 Curt Turgeon**

(651) 366-5535
 curt.turgeon@state.mn.us

**Bituminous Engineer
 John Garrity**

WHEN ROADS LAST LONGER, INFRASTRUCTURE MONEY GOES FURTHER.



Asphalt Materials, Inc.



Meigs is apart of the Asphalt Materials, Inc family of companies. With 16 asphalt plants strategically located throughout the Midwest, our portfolio of companies help customers find the solutions to their construction needs. We are a proud member of The Heritage Group. The Heritage Group started in 1930 with a man, a truck, and a dream. Today, The Heritage Group is a fourth-generation, family-owned business managing a diverse portfolio of operating companies in heavy construction and materials, environmental services, and specialty chemicals.

www.asphalt-materials.com

With three Wisconsin terminals in Abbotsford, Eau Claire, and Portage, H.G. Meigs proudly serves the Wisconsin road building industry with superior quality products ranging from asphalt cements, cutbacks and emulsions. Additionally with Meigs Transport, Asphalt Technologies Group and Bitumix Solutions, H.G. Meigs provides the highest quality products and services to customers throughout the upper Midwest and has been doing so for over 75 years!

www.hgmeigs.com

We are excited to highlight J-Band® — one of our most exceptionally unique products. J-Band is the premier Void Reducing Asphalt Membrane (VRAM). Since 2002, J-Band has a proven track record of extending the life of roads by protecting longitudinal joints and improving the performance of the entire pavement. Learn more about how J-Band works here:

www.thejointsolution.com

CONTACT H.G. MEIGS
800-362-1440

Paving the way for your asphalt needs from coast to coast



Senior Territory Manager
Terry Kobemus
TLKobemus@marathonpetroleum.com
Cell: 612-499-4237

mpcasphalt.com



MINNESOTA DEPARTMENT OF TRANSPORTATION

(651) 366-5577
john.garrity@state.mn.us

Bituminous Specifications

Greg D. Johnson
(651) 331-1219
gregory.d.johnson@state.mn.us

Bituminous Mix Design/Testing

Mike Skurdalsvold
(612) 499-2998
michael.skurdalsvold@state.mn.us

Geotechnologies Engineer

Brad Skow
(612) 346-3980
bradley.skow@state.mn.us

Materials Engineer

Ron Mulvaney
(651) 334-8144
ronald.mulvaney@state.mn.us

Research Manager

Tom Burnham
(651) 276-9133
tom.burnham@state.mn.us

ROAD CONDITION INFORMATION

Dial 511 | Outside of Minnesota Dial (800) 542-0220 www.511mn.org

MINDOT

MIDSTATES
Equipment & Supply

The #1 source for your asphalt maintenance equipment and supply needs!

Midstates is a Dealer for these Fine Brands:

Graco	Little Wonder
Billy Goat	Bomag Fayat Group
Marathon Equipment	Smith Manufacturing
Cimline Pavement Maintenance	

Good Selection of NEW and USED Routers on Hand. Low Hour Melter Rental Units Available for Purchase.



NEW and USED Crack Fillers and Mastic Melters Available.



Large Supply of Parts on Hand at all Times!

Maxwell, McAsphalt, Pure Asphalt, and W.R. Meadows
Products Dealer for Crack Sealing Material
for the Following Five State Area:
Minnesota * Wisconsin * Iowa * North Dakota * South Dakota

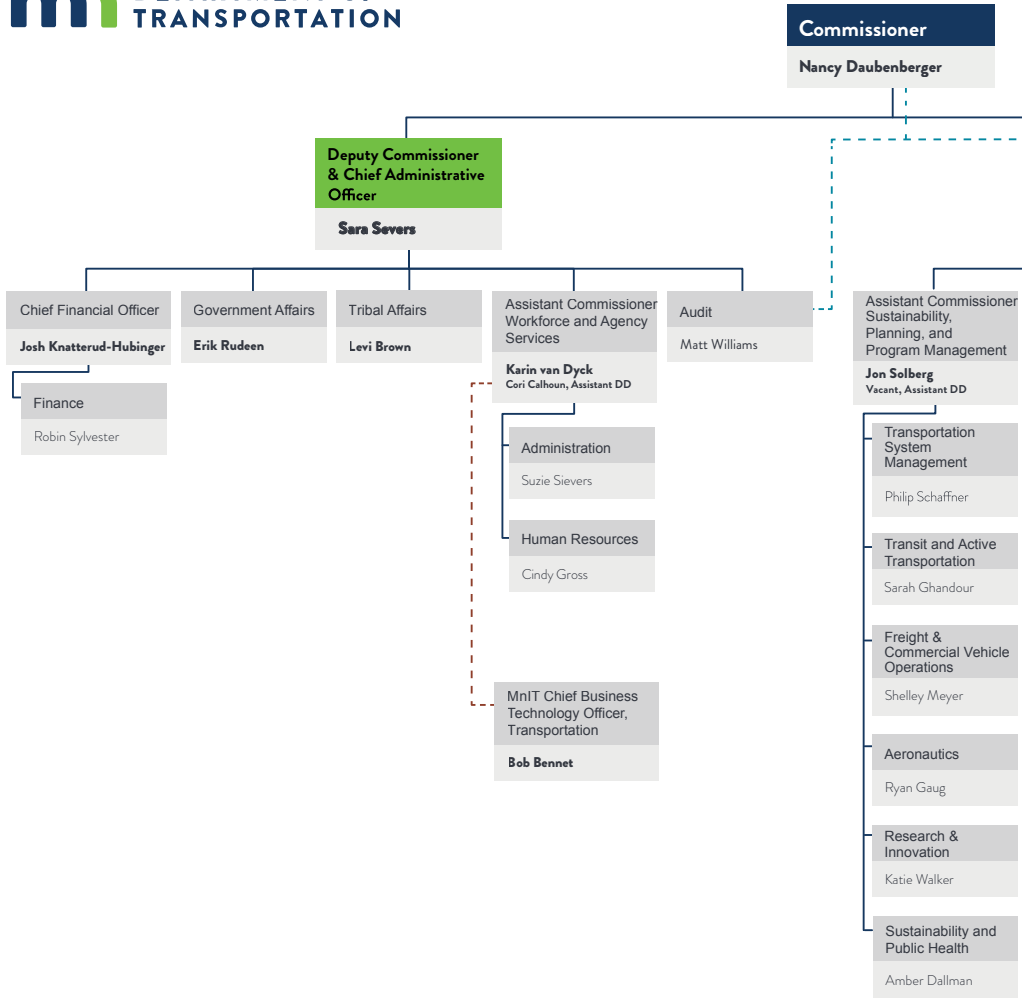
Toll-Free: 1-800-929-3807
Email: midstates@midstatedequipment.net
Web: www.midstatedequipment.net
606 County Road #1 * Mountain Lake, MN 56159

Serving Minnesota Roads Since 1993

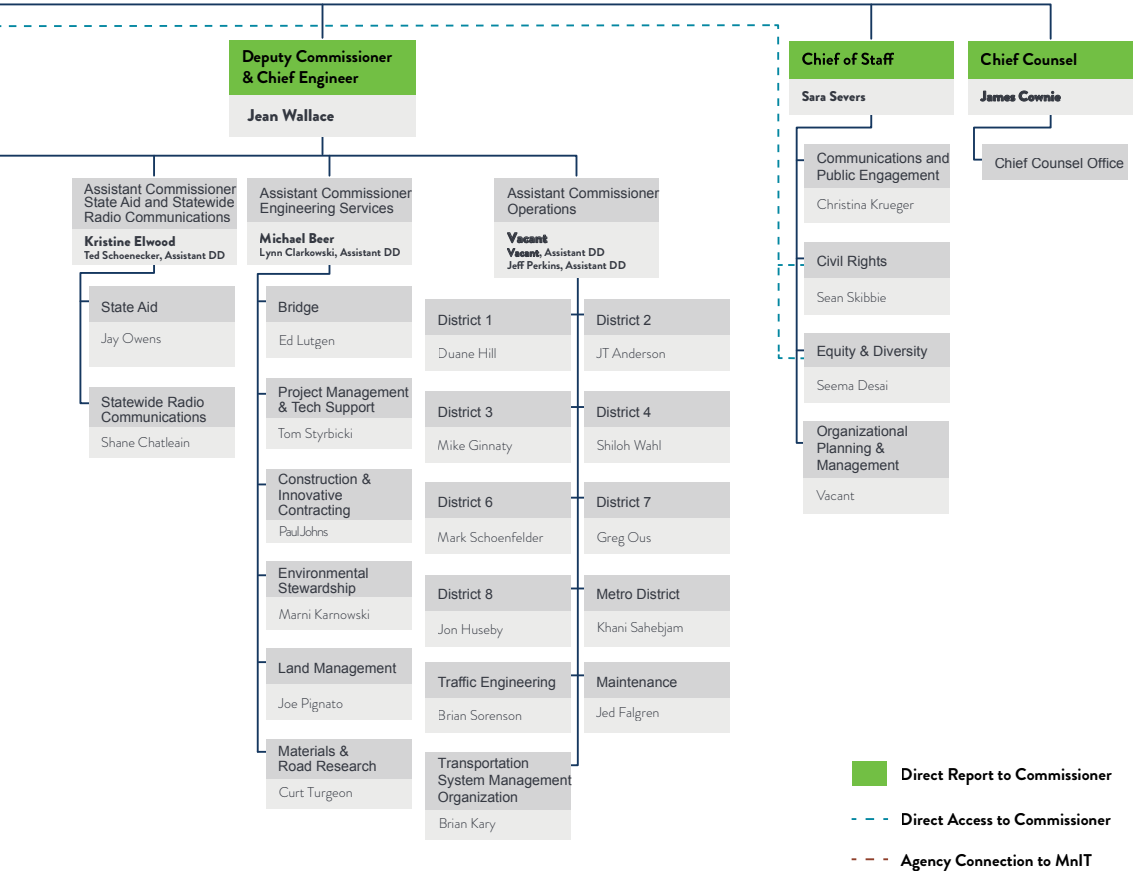
Call us for your next project!
952-469-6700
www.safetysigns-mn.com

MINNESOTA DEPARTMENT OF TRANSPORTATION



MNDOT

MINNESOTA DEPARTMENT OF TRANSPORTATION



MDOT

April 2025



We Are Your **Proud BOMAG** Equipment Experts

Hayden-Murphy is your trusted partner for *exclusive sales, superior service, quality rentals, and dependable parts* for all your paving and road equipment needs!

TWIN CITIES - ELK RIVER - TWIN PORTS • HAYDEN-MURPHY.COM

A Proud Minnesota Woman Owned Business & Partner with the IUOE Local 49



BOMAG

FAYAT GROUP

POWERING YOUR

PAVING LINE



COUNTY ENGINEERS

John Welle

AITKIN COUNTY

1211 Air Park Drive
Aitkin, MN 56431

highway@aitkincountymn.gov
(218) 927-3741

Joe MacPherson

ANOKA COUNTY

1440 Bunker Lake Boulevard NW
Andover, MN 55304

Joe.Macpherson@anokaocountymn.gov
(763) 324-3199

Jim Olson

BECKER COUNTY

200 E. State Street
Detroit Lakes, MN 56501

jim.olson@co.becker.mn.us
(218) 847-4463

Bruce Hasbargen

BELTRAMI COUNTY

2491 Adams Avenue NW
Bemidji, MN 56601

bruce.hasbargen@co.beltrami.mn.us
(218) 333-8173

Chris Byrd

BENTON COUNTY

7752 Hwy 25 NE
PO Box 247 Foley, MN 56329

cbyrd@co.benton.mn.us
(320)-968-5051

Jorden Roggenbuck

BIG STONE COUNTY

20 2nd Street SE
Ortonville, MN 56278-1544

jorden.roggenbuck@bigstonecounty.gov
(320) 839-2594

Ryan Thilges

BLUE EARTH COUNTY

35 Map Drive PO Box 3083
Mankato, MN 56002

Ryan.Thilges@blueearthcountymn.gov
(507) 304-4025

Wayne Stevens

BROWN COUNTY

1901 N. Jefferson Street
New Ulm, MN 56073

enginr@co.brown.mn.us
(507) 233-5700

JinYeene Neumann

CARLTON COUNTY

1630 County Road 61
Carlton, MN 55718

jinyee.neumann@carltoncountymn.gov
(218) 384-9150

Lyndon Colebrook-Robjent

CARVER COUNTY

11360 Highway 212 W, Suite 1
Cologne, MN 55322

lrobjent@co.carver.mn.us
(952)-466-5200

COUNTY ENGINEERS

COUNTY ENGINEERS

Darrick Anderson

CASS COUNTY

8045 County 12 NW
PO Box 579
Walker, MN 56484

darrick.anderson@casscountymn.gov
(218) 547-5201

Jeremy Gilb

CHIPPEWA COUNTY

902 N. 17th Street
Montevideo, MN 56265

jeremy.gilb@chippewacountymn.gov
(320) 269-2151, ext. 1203

Joe Triplett

CHISAGO COUNTY

31325 Oasis Ave
Center City, MN 55012-9663

Joe.triplett@chisagocountymn.gov
(651) 213-8700

Justin Sorum

CLAY COUNTY

2951 41 1/2 Street S
Moorhead, MN 56560

highway.department@co.clay.mn.us
(218) 299-5099

Daniel Sauve

CLEARWATER COUNTY

113 7th Street NE, Box A
Bagley, MN 56621-9103

dan.sauve@co.clearwater.mn.us
(218) 694-6132

Robert Hass

COOK COUNTY

609 E. 4th Avenue
Grand Marais, MN 55604-1150

robert.hass@co.cook.mn.us
(218) 387-3014

Vacant

COTTONWOOD COUNTY

1355 9th Avenue
Windom, MN 56101

(507) 832-8811

Timothy V. Bray

CROW WING COUNTY

16589 County Rd 142
Brainerd, MN 56401

tim.bray.crowwing.gov
(218) 824-1110

Erin Laberee

DAKOTA COUNTY

14955 Galaxie Ave., 3rd Fl
Apple Valley, MN 55124-8579

erin.laberee@co.dakota.mn.us
(952) 891-7122

Vacant

DODGE COUNTY

16 S. Airport Road
PO Box 370
Dodge Center, MN 55927

dodge.highway@dodgecountymn.gov
(507) 374-6694

COUNTY ENGINEERS

Tim Erickson

DOUGLAS COUNTY

526 Willow Drive
PO Box 398
Alexandria, MN 56308

time@co.douglas.mn.us
(320) 762-2967

Ron Gregg

FILLMORE COUNTY

909 Houston Street NW
Preston, MN 55965

rgregg@co.fillmore.mn.us
(507) 765-3854

Philip Wacholz

FREEBORN COUNTY

3300 Bridge Avenue
Albert Lea, MN 56007

phil.wacholz@co.freeborn.mn.us
(507) 377-5188

Jess Greenwood

GOODHUE COUNTY

2140 Pioneer Road
Red Wing, MN 55066

gcpwd@goodhuecountymn.gov
(651) 385-3025

Matthew Yavarow

GRANT COUNTY

224 3rd Street SE
PO Box 1005
Elbow Lake, MN 56531

matthew.yavarow@grantcountymn.gov
(216) 685-8301

Carla Stueve

HENNEPIN COUNTY

1600 Prairie Drive
Medina, MN 55340-5421

carla.stueve@hennepin.us
(612) 596-0300

Brian Pogodzinski

HOUSTON COUNTY

1124 E. Washington Street
Caledonia, MN 55921

brian.pogodzinski@co.houston.mn.us
(507) 725-3925

Andrea Weleski

HUBBARD COUNTY

101 Crocus Hill Street
Park Rapids, MN 56470-9201

andrea.weleski@co.hubbard.mn.us
(218) 732-3302

Justin Bergerson

ISANTI COUNTY

232 N. Emerson Street
Cambridge, MN 55008

justin.bergerson@co.isanti.mn.us
(763) 689-1870

Karin Grandia

ITASCA COUNTY

123 4th Street NE
Grand Rapids, MN 55744-2600

karin.grandia@co.itasca.mn.us
(218) 327-2853

COUNTY ENGINEERS

Vacant

JACKSON COUNTY

53053 780th Street
Jackson, MN 56143

engineer@co.jackson.mn.us
(507) 847-2525

Chad T. Gramentz

KANABEC COUNTY

903 E. Forest Avenue
Mora, MN 55051

chad.gramentz@co.kanabec.mn.us
(320) 679-6300

Mel Odens

KANDIYOHI COUNTY

1801 E. Highway 12
Willmar, MN 56201

highway@kcmn.us
(320) 235-3266

Arthur Kukowski

KITTSON COUNTY

401 2nd Street SW
Hallock, MN 56728

akukowski@co.kittson.mn.us
(218) 843-2686

Trent Nicholson

KOOCHICHING COUNTY

Courthouse Annex
715 4th Street
International Falls, MN 56649

trent.nicholson@co.koochiching.mn.us
(218) 283-1187

Sam Muntean

LAC QUI PARLE COUNTY

422 5th Avenue, Suite 301
Madison, MN 56256

highway@lqpc.com
(320) 598-3878

Jason DiPiazza

LAKE COUNTY

601 3rd Avenue
Two Harbors, MN 55616

Jason.DiPiazza@co.lake.mn.us
(218) 834-8380

Anthony PirkI

LAKE OF THE WOODS COUNTY

306 8th Avenue SE
Baudette, MN 56623

anthony@p@co.lotw.mn.us
(218) 634-1767

David Tiegs

LE SUEUR COUNTY

88 S Park Avenue
Le Center, MN 56057

david.tiegs@lesueurcounty.gov
(507) 357-2251

Joe Wilson

LINCOLN COUNTY

221 N Wallace Avenue
PO Box 97
Ivanhoe, MN 56142

jwilson@co.lincoln.mn.us
(507) 694-1124

COUNTY ENGINEERS

Aaron VanMoer
LYON COUNTY
 504 Fairgrounds Road
 Marshall, MN 56258

AaronVanMoer@co.lyon.mn.us
 (507) 532-8205

Jon Large
MAHNOMEN COUNTY
 1440 Highway 200
 PO Box 399
 Mahnomen, MN 56557

jon.large@co.mahnomen.mn.us
 (218) 936-8471

Lon Aune
MARSHALL COUNTY
 447 South Main
 Warren, MN 56762

lon.aune@marshallcountymn.gov
 (218) 745-4381

Kevin Peyman
MARTIN COUNTY
 1200 Marcus St
 Fairmont, MN 56031

kevin.peyman@co.martin.mn.us
 (507) 235-3347

Andrew Engel
MCLEOD COUNTY
 McLeod County Highway Department
 1400 Adams Street SE
 Hutchinson, MN 55350

andrew.engel@mcleodcountymn.gov
 (320) 484-4362

Phil Schmalz
MEEKER COUNTY
 422 S Johnson Drive
 Litchfield, MN 55355-4549

phillip.schmalz@co.meekeer.mn.us
 (320) 693-5362

Wesley Davis
MILLE LACS COUNTY
 635 2nd Street SE
 Upper Level Milaca, MN 56353

wesley.davis@millelacs.mn.gov
 (320) 983-8327

Tony Hennen
MORRISON COUNTY
 213 1st Avenue SE
 Little Falls, MN 56345-3196

tony.hennen@morrisoncountymn.gov
 (320) 632-0121

Mike Hanson
MOWER COUNTY
 1105 8th Avenue NE
 Austin, MN 55912

michal@co.mower.mn.us
 (507) 437-9536 Ext. 9226

WE ARE 100% ASPHALT.

It is MAPA's mission to serve our members by advancing the technology of asphalt. We strive to accomplish this mission by providing technical assistance, training, advocacy, and consultation.

LET'S GET TO WORK.



1601 Utica Ave S Suite 213, St Louis Park, MN 55416
info@mnapa.org | 651-636-4666 | asphaltisbest.com

COUNTY ENGINEERS

Randy Groves
MURRAY COUNTY

2500 28th Street
PO Box 57
Slayton, MN 56172-9212

randy.groves@murraycountymn.gov
(507) 836-1133

Seth Greenwood
NICOLLET COUNTY

1700 Sunrise Drive
St. Peter, MN 56082

seth.greenwood@co.nicollet.mn.us
(507) 934-7723

Aaron Holmbeck
NOBLES COUNTY

960 Diagonal Road
PO Box 187
Worthington, MN 56187-0187

aholmbeck@co.nobles.mn.us
(507) 295-5322

Keith Berndt
NORMAN COUNTY

814 E Main Street
Ada, MN 56510-11318

keith.berndt@normanmn.gov
(218)784-7126

Vacant
OLMSTED COUNTY

2122 Campus Drive SE Suite 200
Rochester, MN 55904-4744

(507) 328-7050

Jodi Teich
OTTER TAIL COUNTY

505 S. Court Street, Suite 1
Fergus Falls, MN 56537

(218) 998-8470

Michael Flaagan
PENNINGTON COUNTY

250 125th Avenue NE
Thief River Falls, MN 56701

mlflaagan@penningtonmn.gov
(218) 683-7017

Mark LeBrun
PINE COUNTY

405 Airport Road NE
Pine City, MN 55063

mark.lebrun@co.pine.mn.us
(320) 216-4203

Nick Bergman
PIPESTONE COUNTY

600 4th Street NW PO Box 276
Pipestone, MN 56164

nick.bergman@pipestonecounty.gov
(507) 825-1245

COUNTY ENGINEERS

Rich Sanders

POLK COUNTY

Hwy 75 S & Country Road 223
Crookston, MN 56716

rsanders@co.polk.mn.us
(218) 470-8253

Brian Giese

POPE COUNTY

16139 State Highway 29
Glenwood, MN 56334

brian.giese@co.pope.mn.us
(320) 634-7745

Bruce Westby

RAMSEY COUNTY

7550 Sunwood Drive NW
Ramsey, MN 55303

bwestby@ci.ramsey.mn.us
(763) 427-1410

Taylor Amoit

RED LAKE COUNTY

204 7th Street SE
Red Lake Falls, MN 56750

tamiot@co.red-lake.mn.us
(218) 253-2697

Nick Klisch

REDWOOD COUNTY

1820 E. Bridge Street
PO Box 6
Redwood Falls, MN 56283

rchd@redwoodcounty-mn.gov
(507) 637-4056

Jeff Marlowe

RENVILLE COUNTY

105 S. 5th Street, Room 319
Olivia, MN 56277

jeff.marlowe@renvillecountymn.gov
(320) 523-3759

Dennis Luebbe

RICE COUNTY

610 NW 20th Street
Faribault, MN 55021

dennis.luebbe@ricecountymn.gov
507-332-6110

Mark Sehr

ROCK COUNTY

1120 N. Blue Mound Avenue
PO Box 808
Luverne, MN 56156-0808

mark.sehr@co.rock.mn.us
(507) 283-5010

Ericka Halstensgard

ROSEAU COUNTY

1921 Industrial Blvd
Roseau, MN 56751

ericka.halstensgard@co.roseau.mn.us
(218) 463-2063

COUNTY ENGINEERS

Tony Winiecki

SCOTT COUNTY

600 Country Trail E
Jordan, MN 55352-9339

twiniecki@co.scott.mn.us
(952) 496-8346

Andrew J. Witter

SHERBURNE COUNTY

Sherburne Cty Govt Center Attn: Public Works
13880 Business Center Drive NW, Suite 100
Elk River, MN 55330-1692

andrew.witter@co.sherburne.mn.us
(763) 765-3302

Tim Becker

SIBLEY COUNTY

SCSC, 111 8th St. PO Box 897
Gaylord, MN 55334

timb@sibleycounty.gov
(507) 237-4092

Jim Foldesi

ST. LOUIS COUNTY

4787 Midway Road
Duluth, MN 55811-9794

foldesij@stlouiscountymn.gov
(218) 625-3830

Jodi A. Teich

STEARNS COUNTY

PO Box 246
St. Cloud, MN 56302

jodi.teich@stearnscountymn.gov
(320) 255-6180

Greg Ilkka

STEELE COUNTY

3000 Hoffman Dr NW
Owatonna, MN 55060

Gregory.Ilkka@co.steele.mn.us
(507) 444-7670

Todd Larson

STEVENS COUNTY

1762 State Hwy 9; PO Box 191
Morris, MN 56267

toddlarson@co.stevens.mn.us
(320) 208-6685

Tyler Baumchen

SWIFT COUNTY

Highway Department Building, PO Box 241
1635 Hoban Avenue
Benson, MN 56215

tylerbaumchen@co.stevens.mn.us
(320) 842-5251

Loren Fellbaum

TODD COUNTY

44 Riverside Drive
Long Prairie, MN 56347

loren.fellbaum@co.todd.mn.us
(320) 732-2722

Chad Gillespie

TRAVERSE COUNTY

708 3rd Ave North, PO Box 485
Wheaton, MN 56296

Chad.Gillespie@traversecountymn.gov
(320) 563-4848

COUNTY ENGINEERS

Dietrich Flesch
WABASHA COUNTY
 821 Hiawatha Drive W
 Wabasha, MN 55981

dflesch@co.wabasha.mn.us
 (651) 565-3366

Darin Fellbaum
WADENA COUNTY
 221 Harry And Rich Drive
 Wadena, MN 56482-2411

darin.fellbaum@wcmn.us
 (218) 631-7636

Nathan Willey
WASECA COUNTY
 508 South State Street
 Waseca, MN 56093

(507) 835-9716

Wayne Sandberg
WASHINGTON COUNTY
 11660 Myeron Road N
 Stillwater, MN 55082

Wayne.Sandberg@washingtoncountymn.gov
 (651) 430-4339

Michael McCarty
WATONWAN COUNTY
 1304 7th Avenue S
 St. James, MN 56081

dmichael.mccarty@watonwancountymn.gov
 (507) 942-2200

Troy Wright
WILKIN COUNTY
 515 S. 8th Street
 Breckenridge, MN 56520

Twright@wilkincounty.gov
 (218) 643-4772

David Kramer
WINONA COUNTY
 5300 Highway 61 W
 Winona, MN 55987-1398

dkramer@winonacounty.gov
 (507) 457-8840

Chad Hausmann
WRIGHT COUNTY
 3600 Braddock Avenue NE
 Buffalo, MN 55313

Chad.Hausmann@wrightcountymn.gov
 (763) 682-7388

Dan Moravetz
YELLOW MEDICINE COUNTY
 1320 13th Street
 Granite Falls, MN 56241-1286

Dan.Moravetz@co.ym.mn.gov
 (320) 313-3006

MUNICIPAL ENGINEERS

Steven Jahnke

ALBERT LEA PW DIR/CITY ENGINEER

221 E. Clark Street
Albert Lea, MN 56007

sjahnke@ci.albertlea.mn.us
(507) 377-4325

Adam Nafstad

ALBERTVILLE PW DIR/CITY ENGINEER

5959 Main Avenue NE, PO Box 9
Albertville, MN 55301

adamn@albertvillemn.gov
(763) 497-3384

Blaine Green

ALEXANDRIA CITY ENGINEER

610 Fillmore Street, PO Box 1028
Alexandria, MN 56308

blaine.green@widseth.com
(320) 762-8149

David Berkowitz

ANDOVER PW DIR/CITY ENGINEER

1685 Crosstown Boulevard NW
Andover, MN 55304

D.Berkowitz@andovermn.gov
(763)-767-5133

Joe MacPherson

ANOKA CITY ENGINEER

2015 1st Avenue N
Anoka, MN 55303

Joe.Nacpherson@anokacountymn.gov
(763) 324-3199

Brandon S. Anderson

APPLE VALLEY CITY ENGINEER

7100 147th Street W
Apple Valley, MN 55124

pubworks@cityofapplevalley.org
(952) 953-2590

David Swearingen

ARDEN HILLS PW DIR/CITY ENGINEER

1245 W Highway 96
Arden Hills, MN 55112

dswearingen@cityofardenhills.org
(651) 792-7847

Steven Lang

AUSTIN CITY ENGINEER

500 4th Avenue NE
Austin, MN 55912

slang@ci.austin.mn.us
(507) 437-9949

Trevor Walter

BAXTER CITY ENGINEER

13190 Memorywood Dr
Baxter, MN 56425

cityhall@baxtermn.gov
(218) 454-5100

Chris Lisson

BECKER CITY ENGINEER

12060 Sherburne Avenue
Becker, MN 55308

clisson@ci.becker.mn.us
(763) 200-4259

MUNICIPAL ENGINEERS

Joe Duncan (Bolton & Menk, Inc.)
BELLE PLAINE CITY ENGINEER
218 North Meridian Street
P.O. Box 129
Belle Plaine, MN 56011

joe.duncan@bolton-menk.com
(507) 625-4171

Samuel Anderson
BEMIDJI CITY ENGINEER
317 4th St NW
Bemidji, MN 56601

cityclerk@ci.bemidji.mn.us
(218) 759-3567

Layne Otteson
BIG LAKE CITY ENGINEER
18041 198th Avenue
Big Lake, MN 55309

Lotteson@biglakemn.org
(763) 263-2268

Dan Schluender
BLAINE CITY ENGINEER
10801 Town Square Drive
Blaine, MN 55449

DSchluender@blainemn.gov
(763) 785-6158

PIRTEK HYDRAULIC & INDUSTRIAL HOSE SERVICE

- ETA 1 Hour On Site
- Emergency Service 24 Hours - 7 Days
- Qualified Technicians
- On Site Installation
- Service & Supply Centers
- Full Range of Hydraulic & Industrial Hoses, Fittings & Accessories

WE'LL KEEP YOU OPERATING®

PIRTEK Burnsville 1409 Cliff Rd. E Burnsville, MN 55337 952-895-5400	PIRTEK Plymouth 11350 Highway 55 Plymouth, MN 55441 763-475-0475	PIRTEK Midway 2161 University Avenue St. Paul, MN 55114 651-641-1414
--	--	--

MUNICIPAL ENGINEERS

MUNICIPAL ENGINEERS

Julie Long

BLOOMINGTON CITY ENGINEER

1800 W Old Shakopee Rd
Bloomington, MN 55431

jlong@bloomingtonmn.gov
(952) 563-4865

Jessie Dehn

BRAINERD CITY ENGINEER

501 Laurel Street
Brainerd, MN 56401

jdehn@ci.brainerd.mn.us
(218) 828-2307

Ahmed Omer

BROOKLYN CENTER CITY ENGINEER

6301 Shingle Creek Parkway
Brooklyn Center, MN 55430

aomer@ci.brooklyn-center.mn.us
(763) 569-3326

Marc Culver

BROOKLYN PARK CITY ENGINEER

5200 85th Avenue N
Brooklyn Park, MN 55443

marc.culver@brooklynpark.org
(612) 201-4033

Justin Kannas, P.E (Bolton & Menk, Inc.)

BUFFALO CITY ENGINEER

2040 Highway 12 E
Willmar, MN 56201-5818

justin.kannas@bolton-menk.com
(320) 905-2704

Logan Vlasaty

BURNSVILLE CITY ENGINEER

100 Civic Center Parkway
Burnsville, MN 55337-3817

logan.vlasaty@burnsvillemn.gov
(952) 895-4457

William Angerman (WHKS & Co.)

BYRON CITY ENGINEER

680 Byron Main Ct NE
Byron, MN 55920-1637

bangerman@whks.com
(507) 288-3923

Greg Anderson

CAMBRIDGE CITY ENGINEER

300 3rd Ave NE
Cambridge, MN 55008

(651) 490-2017

Heather Nelson

CHAMPLIN CITY ENGINEER

11955 Champlin Drive
Champlin, MN 55316

hnelson@ci.champlin.mn.us
(763) 923-7120

Charles Howley

CHANHASSEN PW DIR/CITY ENGINEER

7700 Market Boulevard, PO Box 147
Chanhasseen, MN 55317-0147

chowley@chanhasseenmn.gov
(952) 227-1169

MUNICIPAL ENGINEERS

Matt Clark

CHASKA CITY ENGINEER

One City Hall Plaza
Chaska, MN 55318

mclark@chaskamn.com
(952) 227-7522

Jake Guzik

CHISAGO CITY CITY ENGINEER

2035 County Road D E, Suite B
Maplewood, MN 55109-5314

jacob.guzik@bolton-menk.com
(612) 965-2021

Jim Johnson

CHISHOLM CITY ENGINEER

316 W Lake Street
Chisholm, MN 55719

jjohnson@ci.chisholm.mn.us
(218) 254-7907

Eric Eckman (WSB & Associates)

CIRCLE PINES CITY ENGINEER

701 Xenia Avenue S, Suite 300
Minneapolis, MN 55416

eeckman@wsbeng.com
(763) 512-5257

Caleb Peterson

CLOQUET CITY ENGINEER

101 - 14th Street
Cloquet, MN 55720

cpeterson@cloquetmn.gov
(218) 879-3347

Rochelle Wildmer

COLUMBIA HEIGHTS CITY ENGINEER

637 38th Avenue NE
Columbia Heights, MN 55421

rwidmer@columbiaheightsmn.gov
(763) 706-3704

Mark Hansen

COON RAPIDS PW DIR/CITY ENGINEER

11155 Robinson Drive NW
Coon Rapids, MN 55433-3761

mhansen@coonrapidsmn.gov
(763) 767-6465

Kent Torve (Wenck Associates, Inc.)

CORCORAN CITY ENGINEER

PO Box 249
Maple Plain, MN 55359

ktorve@wenck.com
(763) 479-4200

Paul Sponholz

COTTAGE GROVE CITY ENGINEER

8635 W. Point Douglas Road
Cottage Grove, MN 55016

psponholz@cottagegrovemn.gov
(651) 458-2848

Richard Clauson (Widseth Smith Nolting)

CROOKSTON CITY ENGINEER

124 N Broadway
Crookston, MN 56716

rich.clauson@wsn.us.com
(218) 281-6522

MUNICIPAL ENGINEERS

Jesse Struve

CRYSTAL PW DIR/CITY ENGINEER

4141 Douglas Dr.
Crystal, MN 55422

jesse.struve@crystalmn.gov
(763) 531-1160

Jason P. Quisberg (Wenck Associates, Inc.)

DAYTON CITY ENGINEER

Wenck Associates
7500 Olson Memorial Highway, Suite 300
DGolden Valley, MN 55427

jason.quisberg@stantec.com
(763) 252-6873

Shawn Louwagie (Wenck Associates, Inc.)

DELANO CITY ENGINEER

PO Box 108
Delano, MN 55328

slouwagie@delano.mn.us
(763) 972-0586

Jon Pratt (Apex Engineering Group)

DETROIT LAKES CITY ENGINEER

920 McKinley Avenue
Detroit Lakes, MN 56501

jpratt@cityofdetroitlakes.com
(218) 844-2580

Cindy Voigt

DULUTH CITY ENGINEER

411 W 1st Street City Hall Room 240
Duluth, MN 55802

cvoigt@duluthmn.gov
(218) 730-5071

Aaron Nelson

EAGAN CITY ENGINEER

3830 Pilot Knob Road
Eagan, MN 55122

manelson@cityofeagan.com
(651) 675-5635

Craig Jochum (Hakanson Anderson)

EAST BETHEL CITY ENGINEER

3601 Thurston Avenue
Anoka, MN 55303

craigj@haa-inc.com
(763) 427-5860

Lee Cariveau

EAST GRAND FORKS CITY ENGINEER

1600 Central Ave NE, PO Box 385
East Grand Forks, MN 56721

lee.cariveau@wsn.us.com
(218) 773-1185

Carter Schulze

EDEN PRAIRIE CITY ENGINEER

8080 Mitchell Road
Eden Prairie, MN 55344-2230

cschulze@edenprairie.org
(952) 949-8339

Chad Millner

EDINA CITY ENGINEER

7450 Metro Boulevard
Edina, MN 55439

cmillner@edinamn.gov
(952) 826-0318

MUNICIPAL ENGINEERS

Justin Femrite

ELK RIVER CITY ENGINEER

13065 Orono Parkway
Elk River, MN 55330

jfemrite@elkrivermn.gov
(763) 635-1051

Erik Henricksen

FALCON HEIGHTS CITY ENGINEER

2660 Civic Center Dr.
Roseville, MN 55113

erik.henricksen@cityofroseville.com
(651) 792-7048

Mark DuChene

FARIBAULT CITY ENGINEER

208 1st Avenue NW
Faribault, MN 55021

mduchene@faribaultmn.gov
(507) 333-0360

John Powell

FARMINGTON ASSISTANT CITY ENGINEER

430 3rd Street
Farmington, MN 55024

jpowell@farmingtonmn.gov
(651) 280-6846

Brian Yavarow

FERGUS FALLS CITY ENGINEER

112 Washington Avenue
Fergus Falls, MN 56538-0868

brian.yavarow@ci.fergus-falls.mn.us
(218) 332-5413

Ryan Goodman (Bolton & Menk, Inc.)

FOREST LAKE CITY ENGINEER

2035 County Road D E, Suite B
Maplewood, MN 55109

ryan.goodman@bolton-menk.com
(651) 704-9970

James Kosluchar

FRIDLEY PW DIR/CITY ENGINEER

6431 University Ave. NE
Fridley, MN 55432

koslucharj@ci.fridley.mn.us
(763) 572-3550

John Rodeberg (Short Elliot Hendrickson Inc.)

GLENCOE CITY ENGINEER

1107 11th St E Ste 107
Glencoe, MN 55336-2327

jrodeberg@sehinc.com
(952) 864-5586

Michael Ryan

GOLDEN VALLEY CITY ENGINEER

7800 Golden Valley Road
Golden Valley, MN 55427

mryan@goldenvalleymn.gov
(763) 593-8043

Matt Wegwerth

GRAND RAPIDS CITY ENGINEER

PO Box 867, 420 N Pokegama Ave.
Grand Rapids, MN 55744

engineering@cityofgrandrapidsmn.com
(218) 326-7625

MUNICIPAL ENGINEERS

David Krugler

HAM LAKE CITY ENGINEER

13635 Johnson Street NE
Ham Lake, MN 55304

dkrugler@rfcengineering.com
(763) 207-9853

Cody Mathisen

HASTINGS CITY ENGINEER

101 - 4th St. E
Hastings, MN 55033

cmathisen@hastingsmn.gov
(651) 480-2372

David Bolf (Northland Consulting Engineers)

HERMANTOWN CITY ENGINEER

102 S 21st Avenue W, Suite 1
Duluth, MN 55806

david@nce-duluth.com
(218) 349-7485

Jesse Story

HIBBING PW DIR/CITY ENGINEER

401 E 21st Street
Hibbing, MN 55746

jessestory@hibbingmn.gov
(218) 312-1571

Eric Klingbeil

HOPKINS CITY ENGINEER

1010 First Street S
Hopkins, MN 55343

eklingbeil@hopkinsmn.com
(952) 548-6357

Mark Erichson (WSB & Associates)

HUGO CITY ENGINEER

477 Temperance Street
St. Paul, MN 55101

merichson@wsbeng.com
(612) 360-1278

Jordan Van Oort/Samuel Fink

HUTCHINSON CITY ENGINEER

PO Box 308
Hutchinson, MN 55350-0308

jvanoort@sehinc.com/sfink@sehinc.com
(320) 587-7341

Paul Merchlewicz

INVER GROVE HEIGHTS ASSISTANT CITY ENGINEER

8150 Barbara Avenue
Inver Grove Heights, MN 55077

pmerchlewicz@ighmn.gov
(651) 450-2572

Jason W. Cook (Bolton & Menk, Inc.)

ISANTI CITY ENGINEER

7533 Sunwood Drive NW, Suite 206
Ramsey, MN 55303

(763) 200-2444

Luke Wheeler

JORDAN CITY ENGINEER

12224 Nicollet Avenue
Burnsville, MN 55337

luke.wheeler@bolton-menk.com
(612) 597-9105

MUNICIPAL ENGINEERS

Brandon Theobald (WHKS & Co.)

KASSON CITY ENGINEER

2905 S Broadway
Rochester, MN 55904

btheobald@whks.com
(507) 288-3923

Tim Hruska (WHKS & Co.)

LA CRESCENT CITY ENGINEER

2905 S Broadway
Rochester, MN 55904

thruska@whks.com
(507) 288-3923

William Anderson (Short Elliott Hendrickson Inc.)

LAKE CITY CITY ENGINEER

717 Third Avenue SE, Suite 101
Rochester, MN 55904

(507) 288-6464

Jack Griffin (Focus Engineering, Inc.)

LAKE ELMO CITY ENGINEER

1305 Interlachen Drive
Eagan, MN 55123

jack.griffin@focusengineeringinc.com
(651) 300-4264

Zachary Johnson

LAKEVILLE CITY ENGINEER

20195 Holyoke Avenue
Lakeville, MN 55044-9047

zjohnson@lakevillemn.gov
(952) 985-4501

Diane Hankee (WSB & Associates)

LINO LAKES CITY ENGINEER

600 Town Center Parkway
Lino Lakes, MN 55014

DHankee@linolakes.us
(651) 982-2430

Chuck DeWolf (Bolton & Menk, Inc.)

LITCHFIELD CITY ENGINEER

2040 Highway 12 E
Willmar, MN 56201-5818

chuck.deWolf@bolton-menk.com
(320) 231-3956

Eric Seaburg

LITTLE CANADA CITY ENGINEER

2035 County Road D
Maplewood, MN 55109

eric.seaburg@bolton-menk.com
(612) 270-9681

Greg Kimman

LITTLE FALLS PW DIR/CITY ENGINEER

100 NE 7th Avenue, PO Box 244
Little Falls, MN 56345

gkimman@cityoflittlefalls.com
(320) 616-5500

Amanda Sachi

MAHTOMEDI CITY ENGINEER

477 Temperance St
St. Paul, MN 55101

asachi@wsbeng.com
(651) 470-7477

MUNICIPAL ENGINEERS

Jeffrey E. Johnson

MANKATO PW DIR/CITY ENGINEER

10 Civic Center Plaza, PO Box 3368
Mankato, MN 56002-3368

(507) 387-8640

R.J Kakach

MAPLE GROVE CITY ENGINEER

12800 Arbor Lakes Parkway PO Box 1180
Maple Grove, MN 55311-6180

rjkkach@maplegrovmn.gov
(763) 494-6353

Steve Love

MAPLEWOOD CITY ENGINEER

1830 E. Co. Rd. B
Maplewood, MN 55109

Steve.Love@maplewoodmn.gov
(651) 249-2404

Jason Anderson

MARSHALL PW DIR/CITY ENGINEER

344 W Main Street
Marshall, MN 56258

(507) 537-6051

Jim Stremel (WSB & Associates)

MEDINA CITY ENGINEER

701 Xenia Avenue S, Suite 300
Minneapolis, MN 55416

JStremel@wsbeng.com
(763) 287-8532
(763) 541-1700

Ryan Ruzek

MENDOTA HEIGHTS PW DIR/CITY ENGINEER

1101 Victoria Curve
Mendota Heights, MN 55118

ryanr@mendota-heights.com
(651) 255-1123

Jenifer Hager

MINNEAPOLIS CITY ENGINEER

203 City Hall
Minneapolis, MN 55415-1390

jenifer.hager@minneapolismn.gov
(612) 673-3625

Phil Olson

MINNETONKA CITY ENGINEER

14600 Minnetonka Boulevard
Minnetonka, MN 55345

polson@eminnetonka.com
(952) 939-8239

Alyson Fauske (WSB & Associates)

MINNETRISTA CITY ENGINEER

7701 Co Rd 110W
Minnetrista, MN 55364

afauske@wsbeng.com
(952) 446-1660

Mike Amborn

MONTEVIDEO CITY ENGINEER

119 S 1st Street, PO Box 55
Montevideo, MN 56265-0055

mamborn@rbengr.com
(320) 269-8695
(320) 226-7278

MUNICIPAL ENGINEERS

Matt Leonard
MONTICELLO CITY ENGINEER
 505 Walnut Street
 Monticello, MN 55362

Matt.Leonard@ci.monticello.mn.us
 (763) 271-3271

Robert Zimmerman
MOORHEAD CITY ENGINEER
 403 Center Ave
 Moorhead, MN 56561 779

bob.zimmerman@ci.moorhead.mn.us
 (218) 299-5390

Russ Breeggemann
MORRIS CITY PW DIRECTOR
 City of Morris Garage, 156 S Co. Rd 22
 Morris, MN 56267

russ@ci.morris.mn.us
 (320) 589-1276

Matt Bauman
MOUND CITY ENGINEER
 2638 Shadow Lane, Suite 200
 Chaska, MN 55318

matthew.bauman@bolton-menk.com
 (612) 756-3230

SALES | RENTALS | PARTS | SERVICE

**WHEN IT'S YOUR ASPHALT
 THAT'S ON THE LINE...
 TRUST SWANSTON EQUIPMENT.**

Serving the asphalt industry since 1930 with locations in
 Fargo, ND, Minot, ND, Alexandria, MN and Fergus Falls, MN.



We're proud to partner with Bear Cat, Berlon, Blue Diamond, Bobcat®, Bradco, Diamond Mowers, Doosan, DuraTech, Erskine, Etnyre, Felling Trailers, Finn, Generac, Gomaco, GrabTec, Green Climber, KM International, Midland, Minnich, Paladin, Sakai, Virnig, Volvo, and more!

www.swanston.com

MUNICIPAL ENGINEERS

MUNICIPAL ENGINEERS

Xiyan McNamara
MOUNDS VIEW PW DIR/CITY ENGINEER
 733 Marquette Ave S, Suite 1000
 Minneapolis, MN 55402
 xiyan.mcnamara@stantec.com
 (763) 717-4051

Craig Schlichting
NEW BRIGHTON CITY ENGINEER
 803 Old Highway 8 NW
 New Brighton, MN 55112
 Craig.Schlichting@newbrightonmn.gov
 (651) 638-2056

Dan Boyum (Stantec)
NEW HOPE CITY ENGINEER
 2335 West Hwy 36
 St. Paul, MN 55113
 dan.boyum@stantec.com
 (651) 775-5098

Chris Cavett (Short Elliot Hendrickson Inc.)
NEW PRAGUE CITY ENGINEER
 11 Civic Center Plaza, Suite 200
 Mankato, MN 56001
 ccavett@sehinc.com
 (507) 388-1989

Joseph Stadheim
NEW ULM CITY ENGINEER
 100 N Broadway, PO Box 636
 New Ulm, MN 56073
 joes@newulmmn.gov
 (507) 359-8380

Justin Messner
NORTH BRANCH CITY ENGINEER
 701 Xenia Avenue S, Suite 300
 Minneapolis, MN 55416
 jmessner@wsbeng.com
 (651) 286-8465

Daniel Sarff (Bolton & Menk, Inc.)
NORTH MANKATO CITY ENGINEER
 1960 Premier Drive
 Mankato, MN 56001-5900
 daniel.sarff@bolton-menk.com
 (507) 327-0666

Morgan Dawley (WSB & Associates)
NORTH ST. PAUL CITY ENGINEER
 701 Xenia Avenue S, Suite 300
 Minneapolis, MN 55416
 mdawley@wsbeng.com
 (763) 541-4800

David Bennett
NORTHFIELD PW DIR/CITY ENGINEER
 801 Washington Street
 Northfield, MN 55057
 (507) 645-3006
 Fax (507) 645-3055

Chuck Schwartz (MSA Professional Services, Inc.)
OAK GROVE CITY ENGINEER
 60 Plato Boulevard E, Suite 140
 St. Paul, MN 55107
 cschwartz@msa-ps.com
 (612) 548-3141

MUNICIPAL ENGINEERS

Brian Bachmeier (Interim)
OAKDALE CITY ENGINEER

1584 Hadley Avenue N
 Oakdale, MN 55128

brian.bachmeier@bolton-menk.com
 (651) 730-2730

Adam Edwards
ORONO PW DIR/CITY ENGINEER

2750 Kelley Parkway, P.O. Box 66
 Crystal Bay, MN 55323

aedwards@ci.orono.mn.us
 (952) 249-4661

Ron Wagner (Hakanson Anderson)
OTSEGO CITY ENGINEER

3601 Thurston Avenue
 Anoka, MN 55303-1063

ronw@haa-inc.com
 (763) 427-5860

Sean Murphy
OWATONNA PW DIR/CITY ENGINEER

540 West Hills Circle
 Owatonna, MN 55060

sean.murphy@owatonna.gov
 (507) 774-7306

Mike Payne
PLYMOUTH CITY ENGINEER

3400 Plymouth Boulevard
 Plymouth, MN 55447

mpayne@plymouthmn.gov
 (763) 509-5538

Nick Monserud
PRIOR LAKE PW DIR/CITY ENGINEER

17073 Adelman St SE
 Prior Lake, MN 55372

nmonserud@priorlakemn.gov
 (952) 447-9834

Bruce Westby
RAMSEY CITY ENGINEER

7550 Sunwood Drive NW
 Ramsey, MN 55303

bwestby@cityoframsey.com
 (763) 433-9893

Jim Doering
**REDWOOD FALLS PUBLIC WORKS
 PROJECT COORDINATOR**

140 1st Avenue N, PO Box 434
 Sleepy Eye, MN 56085

jdoering@ci.redwood-falls.mn.us
 (507) 430-5904

Joe Powers
RICHFIELD CITY ENGINEER

6700 Portland Avenue
 Richfield, MN 55423

jpowers@richfieldmn.gov
 (612) 861-9791

Richard McCoy
ROBBINSDALE CITY ENGINEER

4100 Lakeview Avenue
 Robbinsdale, MN 55422

rmccoy@ci.robbinsdale.mn.us
 (763) 537-4534
 (763) 537-7344

MUNICIPAL ENGINEERS

Tyler Niemeyer
ROCHESTER PUBLIC WORKS DIRECTOR
201 4th Street SE, Room 108
Rochester, MN 55904

taniemeyer@rochestermn.gov
(507) 328-2421

Doran Cote
ROGERS CITY ENGINEER
22350 South Diamond Lake Road
Rogers, MN 55374

dcote@rogersmn.gov
(763) 428-0906

Brian Erickson
ROSEMOUNT CITY ENGINEER
2875 145th Street W
Rosemount, MN 55068

brian.erickson@ci.rosemount.mn.us
(651) 322-2025

Jennifer Lowry
ROSEVILLE CITY ENGINEER
2660 Civic Center Drive
Roseville, MN 55113

jennifer.lowry@cityofroseville.com
(651) 792-7042

April Ryan
SARTELL CITY ENGINEER
1200 25th Avenue S, PO Box 1717
St. Cloud, MN 56302-1717

april@sartellmn.com
(320) 229-4300

Scott Hedlund (Short Elliot Hendrickson Inc.)
SAUK RAPIDS CITY ENGINEER
713 Starlight Dr
Sartell, MN 56377

shedlund@sehinc.com
(320) 229-4335

Seng Thongvanh
SAVAGE CITY ENGINEER
6000 McColl Drive
Savage, MN 55378

SThongvanh@ci.savage.mn.us
(952) 224-3419

Alex Jordan
SHAKOPEE PW DIR/CITY ENGINEER
4129 Holmes Street S
Shakopee, MN 55379-1351

ajordan@shakopeemn.gov
(952) 233-9361

Stephanie Smith
SHOREVIEW CITY ENGINEER
4600 Victoria Street N
Shoreview, MN 55126

ssmith@shoreviewmn.gov
(651) 490-4651

Andrew Budde
SHOREWOOD CITY ENGINEER
5755 Country Club Road
Shorewood, MN 55331

cityengineer@ci.shorewood.mn.us
(763) 512-5244

MUNICIPAL ENGINEERS

Nick Guilliams

SOUTH ST. PAUL CITY ENGINEER

125 Third Avenue N
South St. Paul, MN 55075

nguilliams@southstpaul.org
(651) 554-3214

Phil Gravel (Stantec)

SPRING LAKE PARK CITY ENGINEER

2335 W. Highway 36, Suite 703
St. Paul, MN 55113

phil.gravel@stantec.com
(651) 636-4600

Justin Messner (WSB & Associates)

ST. ANTHONY CITY ENGINEER

178 East 9th Street Suite 200
St. Paul, MN 55101

jmessner@wsbeng.com
(651) 286-8465

Steven Foss

ST. CLOUD CITY ENGINEER

400 2nd Street S
St. Cloud, MN 56301

(320) 255-7243

Craig Jochum (Hakanson Anderson)

ST. FRANCIS CITY ENGINEER

7533 Sunwood Drive, Suite 206
Ramsey, MN 55303

craigj@haa-inc.com
(763) 852-0485

Randy Sabart (Short Elliott Hendrickson Inc.)

ST. JOSEPH CITY ENGINEER

1200 25th Avenue S; PO Box 1717
St. Cloud, MN 56302-1717

rsabart@sehinc.com
(320) 229-4348

Deb Heiser

ST. LOUIS PARK CITY ENGINEER

5005 Minnetonka Boulevard
St. Louis Park, MN 55416

dheiser@stlouispark.org
(952) 924-2662

Nick Preisler

ST. MICHAEL CITY ENGINEER

11800 Town Center Dr. NE, Suite 300
St. Michael, MN 55376

nickp@stmichaelmn.gov
(763) 416-7936

Nick Peterson

ST. PAUL CITY ENGINEER

25 W 4th Street 1500 City Hall Annex
St. Paul, MN 55102-1660

nick.peterson@ci.stpaul.mn.us
(651) 266-6155

Morgan Dawley (WSB & Associates)

ST. PAUL PARK CITY ENGINEER

701 Xenia Avenue S, Suite 300
Minneapolis, MN 55416

mdawley@wsbeng.com
(651) 286-8476

MUNICIPAL ENGINEERS

Jeff Domras (Bolton & Menk, Inc.)
ST. PETER CITY ENGINEER

1960 Premier Drive
 Mankato, MN 56001-5900

(507) 625-4171

Jenna Obernolte (Short Elliot Hendrickson Inc.)
STEWARTVILLE CITY ENGINEER

717 3rd Avenue SE
 Rochester, MN 55904

jobernolte@sehinc.com
 (507) 316-6650

Shawn Sanders
STILLWATER PW DIR/CITY ENGINEER

City Hall, 216 N 4th Street
 Stillwater, MN 55082

ssanders@ci.stillwater.mn.us
 (651) 430-8831

Jesse Farrel
VADNAIS HEIGHTS PW DIR/CITY ENGINEER

800 East County Road E
 Vadnais Heights, MN 55127-7117

Jesse.Farrell@cityvadnaisheights.com
 (651) 204-6000

Cara Geheren (Focus Engineering)
VICTORIA CITY ENGINEER

7951 Rose Street, PO Box 36
 Victoria, MN 55386

cara.geheren@focusengineeringinc.com
 (952) 443-2363

Jake Saulsbury (Bolton & Menk, Inc.)
WACONIA CITY ENGINEER

2638 Shadow Lane, Suite 200
 Chaska, MN 55318

jake.saulsbury@bolton-menk.com
 (952) 756-4319

William (Bill) Schluez
PUBLIC WORKS DIRECTOR

1200 25th Ave S, PO Box 1717
 St. Cloud, MN 56302-1717

bill.schluez@ci.waitepark.mn.us
 (320) 252-6822

Nathan Willey
WASECA CITY ENGINEER

508 S State Street
 Waseca, MN 56093

cityengineer@ci.waseca.mn.us
 (507) 835-9716

Michael Kelly
WAYZATA CITY ENGINEER

City Hall, 600 Rice Street E
 Wayzata, MN 55391

mike@wayzata.org
 (952) 404-5316

Ross Beckwith
WEST ST. PAUL CITY ENGINEER

City Hall, 1616 Humboldt Avenue
 West St. Paul, MN 55118

RBeckwith@wspmn.gov
 (651) 552-4100

MUNICIPAL ENGINEERS

Paul Kauppi

WHITE BEAR LAKE PW DIR/CITY ENGINEER

4701 Highway 61
White Bear Lake, MN 55110

pkauppi@whitebearlake.org
(651) 429-8531

Sean Christensen

WILLMAR CITY ENGINEER

333 SW 6th Street
Willmar, MN 56201

schristensen@willmarmn.gov
(320) 235-4202

Brian DeFrang

WINONA CITY ENGINEER

207 Lafayette Street, Rm 205, PO Box 378
Winona, MN 55987

bdefrang@ci.winona.mn.us
(507) 457-8237

Tony Kutzke

WOODBURY CITY ENGINEER

8301 Valley Creek Road
Woodbury, MN 55125

tony.kutzke@woodburymn.gov
(651) 714-3593

Stephen Schnieder

WORTHINGTON CITY ENGINEER

303 9th Street, PO Box 279
Worthington, MN 56187

engineering@ci.worthington.mn.us
(507) 372-8640

Mark Erichson (WSB & Associates)

WYOMING CITY ENGINEER

477 Temperance Street
St. Paul, MN 55101

merichson@wsbeng.com
(651) 286-8463

Keith Koehler

ZIMMERMAN PW DIR/CITY ENGINEER

12980 Fremont Avenue 206
Ramsey, MN 55303

kkoehler@cityofzimmerman.com
(763) 856-4088

MN STATE GOVERNMENT NUMBERS

SENATE: (651) 296-0504 / (888) 234-1112
 Fax (651) 296-6511
www.senate.mn

HOUSE: (651) 296-2146 / (800) 657-3550
 Fax (651) 297-8135
www.house.leg.state.mn.us

GOVERNOR'S OFFICE

Tim Walz

(651) 201-3400 / (800) 657-3717
 Fax (651) 797-1850
www.mn.gov/governor

Mailing Address:

Office of the Governor
 130 State Capitol 75 Rev.
 Dr. Martin Luther King Jr. Boulevard, #130
 St. Paul, MN 55155

FEDERAL REPRESENTATIVES

(Washington D.C. and *Minnesota
 Phone & Fax #'s)

Senator Tina Smith, D-MN

(202) 224-5641
 *(651) 221-1016
 Fax (202) 224-0044
www.smith.senate.gov

Senator Amy Klobuchar, D-MN

(202) 224-3244
 *(612) 727-5220 / (888) 224-9043
 Fax (202) 228-2186
 *Fax (612) 727-5223
www.klobuchar.senate.gov

1ST DISTRICT

(202) 225-2472
 (Mankato & Rochester)
www.finstad.house.gov

Rep. Brad Finstad

2ND DISTRICT

(202) 225-2271
 *(651) 846-2120 (Burnsville)
www.craig.house.gov/

Rep. Angie Craig

3RD DISTRICT

(202) 225-2871
 *(952) 405-8510
 Fax (202) 225-6351
 *(952) 656-5176 (Minnetonka)
www.phillips.house.gov

Rep. Dean Phillips

4TH DISTRICT

(202) 225-6631
 *(651) 224-9191 (St. Paul)
 Fax (202) 225-1968
 *Fax (651) 224-3056 (St. Paul)
www.mccollum.house.gov

Rep. Betty McCollum

5TH DISTRICT

(202) 225-4755
 *(612) 333-1272 (Minneapolis)
www.omar.house.gov

Rep. Ilhan Omar

6TH DISTRICT

(202) 225-2331
 *(763) 241-6848 (Otsego)
 Fax (202) 225-6475
 *Fax (763) 241-7955
www.emmer.house.gov

Rep. Tom Emmer

7TH DISTRICT

(202) 225-2165
 *(218) 422-2090 (Moorhead)
 *(320) 403-6100 (Willmar)
 Fax (202) 225-1593
www.fischbach.house.gov

Rep. Michelle Fischbach

8TH DISTRICT

(202) 225-6211
 *(218) 355-0862 (Brainerd)
 *(763) 552-3359 (Cambridge)
www.nolan.house.gov

Rep. Pete Stauber

OTHER IMPORTANT NUMBERS

MINNESOTA TRANSPORTATION ALLIANCE

Margaret Donahoe, Executive Director

(651) 659-0804
 Fax (651) 659-9009
margaret@transportationalliance.com
www.transportationalliance.com

UNIVERSITY OF MINNESOTA CENTER FOR TRANSPORTATION STUDIES

Kyle Shelton, Director

shelt169@umn.edu (612) 626-4061

LOCAL TECHNICAL ASSISTANCE PROGRAM (LTAP)

Katherine Stanley Minnesota

LTAP, Program Coordinator

sell0146@umn.edu (612) 626-1023
 Fax (612) 625-6381 www.mnltap.umn.edu

MN STATE GOVERNMENT NUMBERS

MINNESOTA DIVISION OF THE FEDERAL HIGHWAY ADMINISTRATION

380 Jackson Street, Suite 500
St. Paul, MN 55101

Wendall L. Meyer, Division Administrator

Minnesota.FHWA@fhwa.dot.gov
www.fhwa.dot.gov/mndiv
(651) 291-6100 Fax (651) 291-6000

MN POLLUTION CONTROL AGENCY (MPCA)

MINNESOTA POLLUTION CONTROL AGENCY (MPCA)

520 Lafayette Road North
St. Paul, MN 55155-4194
(651) 296-6300 or (800) 657-3864
www.pca.state.mn.us

COMMISSIONER, Katrina Kessler

Katrina.Kessler@state.mn.us

DEPUTY COMMISSIONER, Peter Tester

(651) 757.2013
Peter.Tester@state.mn.us

ASSISTANT COMMISSIONER – Water Policy/ Agriculture Liasion, Dana Vanderbosch

(651) 757-2601
dana.vanderbosch@state.mn.us

ASSISTANT COMMISSIONER – Land Policy/ Strategic Initiatives, Kirk Koudelka

(651) 757-2241
Kirk.Koudelka@state.mn.us

ASSISTANT COMMISSIONER – Air and Climate Policy, Craig McDonnell

(651) 757-2248
craig.mcdonnell@state.mn.us

Small Business Environmental Assistance Program (SBEAP) HOTLINE or Questions on Used Oil (Industrial)

Email smallbizhelp.pca@state.mn.us or call (800) 657-3938 for help in completing forms for any media, confidential compliance.

Environmental Emergencies Public Safety 24 Hour Hotline State Duty Officer

(651) 649-5451 / (800) 422-0798

OTHER USEFUL ENVIRONMENTAL CONTACT INFO

MN Dept. of Natural Resources (DNR)

(651) 296-6157 / (888) 646-6367
www.dnr.state.mn.us
info.dnr@state.mn.us

MN Environmental Stewardship, Marni Karnowski

Chief Environmental Officer
(612) 403-5760
marni.karnowski@state.mn.us

EPA Region 5 (Great Lakes) – Chicago

(800) 621-8431 or (312) 353-2000
r5hotline@epa.gov
www.epa.gov/aboutepa/epa-region-5

MN OSHA Compliance (MN OSHA Dept. of Labor & Industry)

(651) 284-5050 / (877) 470-6742
osha.compliance@state.mn.us

OSHA – Federal (United States Dept. of Labor)

(800) 321-6742 [800-321-OSHA]
www.osha.gov

FOUND AN ERROR? HAVE AN UPDATE?

We have made great effort to ensure the information in this directory is correct. Errors do happen, though, and we would appreciate your bringing it to our attention. Please email us at info@mnapa.org or call (651) 636-4666 and tell us what we need to add, delete or correct.

INDEX OF MEMBERS & ADVISORS

Aggregate Suppliers

ACI Asphalt & Concrete, LLC..... 15
 Amrize..... 14
 Custom Asphalt, Inc..... 16
 Bryan Rock Products Inc..... 16
 Dresser Trap Rock Inc. 16
 Kraemer Mining & Materials Inc..... 16
 L.G. Everist, Inc..... 17
 Martin Marietta..... 17
 Meyer Laboratory, LLC.....17
 R.J. Zavoral and Sons, Inc.....18

Banking, Financial, Accounting, Insurance

BMO Harris Bank 19
 Christensen Group Insurance 19
 Holmes Murphy Construction..... 19
 KLC Financial, Inc..... 19
 North Risk Partners 20
 Redpath and Company 20
 RBC Wealth Management..... 20

Contractors

Allied Blacktop Co. - NP 9
 Anderson Brothers Construction Co. - P 9
 Asphalt Surface Tech. Corp. - NP..... 9
 Aurora Asphalt and Concrete 9
 Bituminous Paving, Inc. - P..... 9

Bituminous Roadways, Inc. - P..... 9
 Central Specialties Inc. - P..... 10
 C.S.McCrossan..... 10
 DMJ Asphalt Inc. - NP 10
 Duininck Inc. - P..... 10
 FPI Paving Contractors, Inc. - NP..... 10
 GMH Asphalt Corporation - NP 10
 Goodman Construction - NP..... 10
 Hawkinson Construction - P 11
 J&W Asphalt - NP 11
 Knife River - NP..... 11
 KGM Contractors, Inc. - P..... 11
 Mark Sand & Gravel Co. - P..... 11
 Martin Marietta - P..... 11
 McNamara Contracting, Inc. - P..... 12
 Neilson Blacktopping - P..... 12
 North Valley, Inc. - NP..... 12
 Northland Constructors of Duluth, Inc - P..... 12
 Northland Paving, LLC - NP 12
 Northwest Asphalt, Inc. - NP 12
 Original Driveway Design - NP..... 12
 Park Construction Company - NP 12
 Pine Bend Paving, Inc. - P..... 13
 Plehal Blacktopping, LLC - NP 13
 Rochester Sand & Gravel - P..... 13
 Rum River Contracting Company - NP..... 13
 T.A. Schifsky & Sons, Inc. - P..... 13
 The Asphalt Company - NP..... 14
 TruSeal LLC - NP 14
 Ulland Brothers, Inc. - P..... 14

INDEX OF MEMBERS & ADVISORS

Valley Paving, Inc. - P..... 15
 WM. Mueller & Sons, Inc. - P..... 15
 WW Blacktopping, Inc. - P..... 15

**Engineering,
 Technical, Consulting**

American Engineering Testing, Inc..... 16, 21
 Braun Intertec Corp..... 17, 21
 Interstate Engineering, Inc. 22
 IUOE Local 49/Operating Engineers..... 22
 Motion Engineering, Inc..... 22
 Pacific Geosource 22
 SPC Engineering & Testing, Inc..... 22
 SRF Consulting Group, Inc. 22
 Stantec..... 22
 TransTech 23
 WA Group 23
 Widseth..... 23
 WSB..... 24

Equipment Suppliers

Astec, Inc..... 25
 Ammann America Inc..... 25
 Bomag Americas, Inc..... 25
 Boyer Trucks Sales & Service..... 25
 CWMF Corporation..... 25
 Esch Construction Supply, Inc. 25
 General Equipment & Supplies, Inc..... 26
 Hayden-Murphy Equipment Co., Inc.. 48, 49, 26
 Industrial Supply Solutions Inc. 26

Instrotek, Inc. 26
 Intex Corporation..... 27
 Jeff Martin Auctioneers. 27
 Maxwell Product..... 27
 MC Asphalt 27
 Metropolitan Gravel..... 27
 Midstates Equipment & Supply..... 27
 Miller Excavating, Inc. 27
 Moba Corporation..... 27
 Nuss Truck & Equipment..... 8, 29
 Pirtek..... 61
 Transwest Trucks..... 39
 RB Scott Company, Inc. 29
 RDO Equipment Co..... 28, 29
 Road Machinery & Supplies Company 30
 Ruffridge-Johnson Equipment 30
 Surface Tech LLC..... 30
 Swanston Equipment Companies..... 69, 30
 Unified Screening & Crushing - Mn 81, 31
 Viking Aggregate Equipment..... 31
 Warning Lites of Mn..... 31
 Wayne Transports, Inc..... 31
 Ziegler Cat 82, 31

Industry Partners

Allstates Pavement
 Recycling & Stabilization..... 32
 Antigo Construction, Inc. 32
 Applied Material Solution 32
 Corrective Asphalt Materials 32

INDEX OF MEMBERS & ADVISORS

Ess Brothers & Sons, Inc..... 32

Fahrner Asphalt Sealers, LLC..... 33

Five Skies Training and Consulting, LLC..... 38

HHTC, Inc DBA Pirtek Midway 33

Open Road Carriers, LLC
(Formerly Donovan Enterprises) 33

Midstate Reclamation, Inc..... 45, 33

Purple Wave Auction..... 33

Renucore by Certaineed 34

Ritchie Bros. Auctioneers (America) Inc..... 34

Rock on Trucks Inc. 34

Safety Signs LLC 45, 34

Legal

Best & Flanagan, LLP..... 18, 35

Fabyanske, Westra, Hart
& Thomson, P.A..... 17, 35

Larkin Hoffman 35

Moss & Barnett..... 35

Olson Construction Law, P.C..... 35

Welle Law P.C. 36

**Refineries, Chemical
Additives & Oil
Product Suppliers**

Arkema Science..... 36

Cargill Industrial Solutions..... 36

Cenovus Energy, Inc..... 36

East Side Oil Company, Inc. 36

Flint Hills Resources, LP 37

Henry G. Meigs LLC..... 44, 37

Ingevity 37

Lube-Tech..... 2, 37

Mansfield Energy Co..... 37

Marathon Petroleum Corporation, LP -
St. Paul Park Refinery 44, 37

Mielke Oil.....38

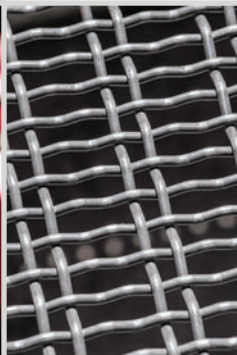
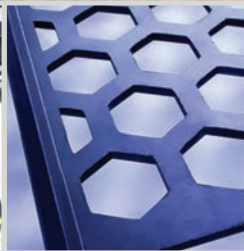
MN Petroleum Marketers Assn..... 38

Petrochoice Lubrication Solutions..... 38



IF IT GOES ON A ROCK PLANT, **UNIFIED**[®] SUPPLIES IT.

- ☑ Meets OEM Specifications
- ☑ Largest Inventories in the U.S.
- ☑ 14 Facilities Across the Country
- ☑ Proud to Manufacture in the U.S.
for Over 155 Years!



Unified[®] Screening & Crushing

sales.mn@unifiedscreening.com | 800-328-0225

ZIEGLER CAT



**TOUGH JOBS
DON'T ALWAYS
RUN SMOOTHLY
— THAT IS,
UNLESS THIS
IS ON THE JOB.**



Pave your way to success with Cat® Reclaimers backed by the unmatched service of Ziegler CAT. These machines offer raw power and great visibility with a full left-to-right sliding cab. Experience excellent traction and mobility while maintaining a comfortable operator environment. And with Cat serviceability features, you can spend less time servicing your reclaimer and more time working. So, gear up to smooth over your next big job.

VISIT ZIEGLERCAT.COM TO LEARN MORE.