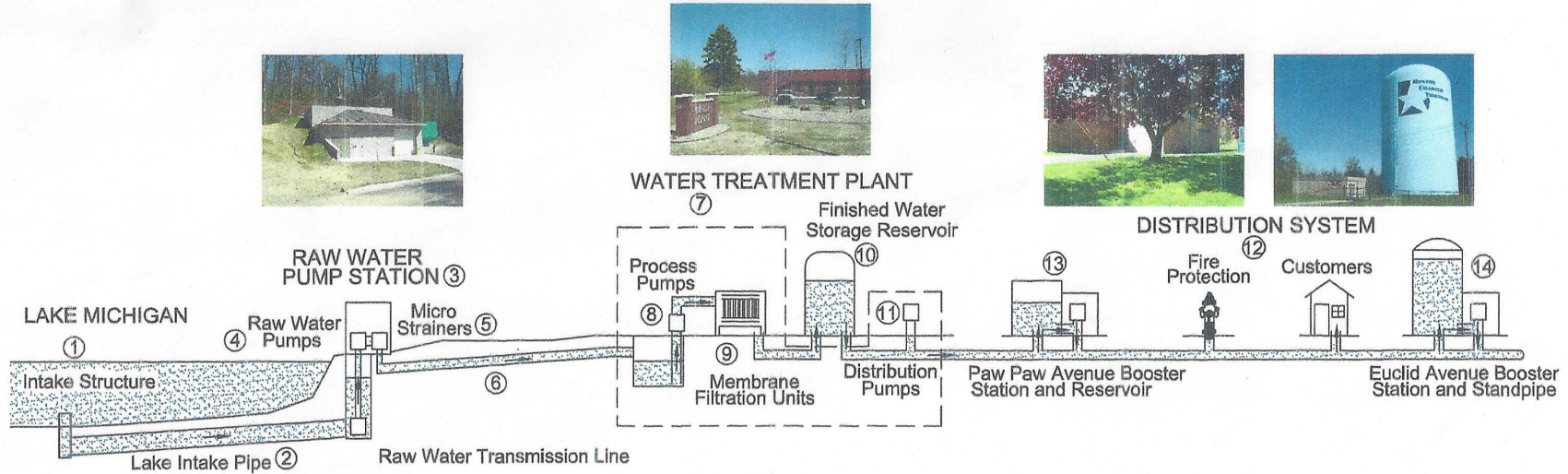
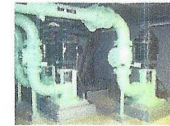


BENTON CHARTER TOWNSHIP WATER SYSTEM



1. Lake Michigan Intake Structure - Located approximately 4,000 feet offshore in 40 feet of water, supplies Lake Michigan water to the system
2. Lake Intake Pipe - 36-inch diameter concrete pipe buried below bottom of Lake
3. Raw Water Pump Station - Located near Rocky Gap County Park, supplies water to Treatment Plant as needed
4. Raw Water Pumps - Located inside Raw Water Pump Station, controlled from Treatment Plant
5. Micro-Strainers - Remove any material larger than 0.010 inch from the raw water
6. Raw Water Transmission Line - 24-inch diameter pipe between Raw Water Pump Station and Treatment Plant
7. Water Treatment Plant - Filters and disinfects water, pumps water to distribution system as needed
8. Process Pumps - Move water through the membrane filter units as needed
9. Membrane Filtration Units - Siemens Memcor units filter water using cartridges filled with hollow fiber type membranes
10. Finished Water Storage Reservoir - Holds one million gallons of treated water
11. Distribution Pumps - Move water from Storage Reservoir to distribution system as needed
12. Distribution System - Network of watermains throughout the Township providing treated water for customer use and fire protection
13. Paw Paw Avenue Booster Station and Reservoir - Booster pump station with 850,000 gallon reservoir, supports system pressure
14. Euclid Avenue Booster Station and Standpipe - Booster pump station with four million gallon standpipe, supports system pressure



Raw Water Pumps



Micro-Strainers



Process Pumps



Membrane Filter Units



Distribution Pumps

**MERRITT
ENGINEERING
INC**

consulting engineers