

SUMMER 2016

MICHIGAN

WATER WORKS NEWS

TREAT. TRANSPORT. TASTE.

MI-ACE 2016

Boyne Highlands, September 13-16 | Harbor Springs MI

P.O. Box 150469 Grand Rapids, MI 49516
ADDRESS SERVICE REQUESTED



American R/D

66" Rotating Disk Gate
installed at DWSD Plant
pressure tested to **500** PSI



+++++

"When reliability is required, use Metal Seated Rotating Disc Gate Valves for Water or Sewer. Proven reliability since 1908"

+++++

**Contact JGM for all your valve needs including
American R/D Gate valves 3" – 108"**

JGM Valve
1155 Welch Road, #D
Commerce, MI 48390



(248) 926-6200
jgmvalve.com
contact@jgmvalve.com



YOUR PARTNERS AT PEERLESS.

In all that we do, our commitment to quality is clear.

From the experience of our skilled craftsmen
to our command of the latest technologies,
we stand apart from the competition.

We take customer service very serious, and work hard to prove it everyday.

That's why when it comes to water supply contracting and
hydrogeologic services...**WE'RE PEERLESS.**

www.peerlessmidwest.com

Mishawaka, Indiana
574.254.9050

Ionia, Michigan
616.527.0050

Indianapolis, Indiana
317.896.2987

Grand Blanc, Michigan
248.996.2721





Our pressure pipe is made to meet the highest standard of quality - yours

Built to last. Built to outlast.

For more than 70 years, Forterra Pressure Pipe has been the leading manufacturer and a principal supplier of highly engineered concrete and steel pipe systems in the United States and Canada, with more than 80 million feet of pipe in service today. Such entities as regional water authorities and districts, federal and state agencies, the Army Corps of Engineers, port authorities and private and industrial clients have trusted us to handle their most demanding jobs.

As one of the largest manufacturers of concrete products in North America, you can expect the highest standard of quality whenever you see the Forterra name.

To find out more, visit forterrabp.com.



forterrabp.com

MICHIGAN

WATER WORKS NEWS

The *Michigan Water Works News* is a quarterly publication of the Michigan Section, American Water Works Association.

The deadline for submitting articles for the Fall 2016 issue is August 12, 2016. Material may be submitted to: Randall Roost, Lansing Board of Water & Light
730 E. Hazel P.O. Box 13007 Lansing, Michigan 48901-3007

Editor:

Randall Roost / Lansing Board of Water and Light

Assistant Editor:

Kristen Philip / MDEQ, Community Drinking Water Unit

Board of Trustees

Barbara Marczak

Chair
Prein & Newhof, Inc.
(231) 798-0101
bmarczak@preinnewhof.com

John Willemin

Chair Elect
Fishbeck, Thompson Carr & Huber
(616) 575 3824
jwillemin@ftch.com

Christine Spitzley

Vice-Chair
Tri-County Regional Planning
Commission
(517) 393-0342
cspitzley@mitcrpc.org

Randall W. Roost

Past Chair
Lansing Board of Water and Light
(517) 702-6114
rwr@lbwl.com

Mark Coleman

Director
Wade Trim
(313) 961-3650
mcoleman@wadetrim.com

Brian Thurston

Secretary Treasurer
MDEQ-RMD-Cadillac
District Office
(231) 590-3430
thurstonb@michigan.gov

Bruce Bartley

Trustee 2013-2016
Bartley Water Associates
(734) 883-3639
bwassocllc@gmail.com

Clyde Dugan

Trustee 2015-2018
East Lansing Meridian
Water Authority
(517) 337-7535
cdugan.elmwsa@att.net

Bill Fritz

Trustee 2013-2016
Waterford Township
(248) 618-7464
bfritz@waterfordmi.gov

Bill Maier

Trustee 2014-2017
Retired
(517) 702-6813
b.maier180@gmail.com

Amy Vail

Trustee 2015-2018
Cadillac Utilities Dept
(230) 775-2368
lab@cadillac-mi.net

MI-AWWA Staff

517-292-2912
www.mi-water.org

Bonifer Ballard

Executive Director
bballard@mi-water.org

Eric Johnson

Meetings Coordinator

Ariel Veneziano

Bookkeeper

Michigan Water Works News is published for the MI-AWWA by

Craig Kelman & Associates Ltd.
3rd Floor - 2020 Portage Avenue
Winnipeg, MB • R3J 0K4
Tel: 866-985-9780 Fax: 866-985-9799

©2016 Michigan Section, AWWA. All rights reserved. The contents of this publication, which does not necessarily reflect the opinion of the publisher or the association, may not be reproduced by any means, in whole or in part, without the prior written consent of the Michigan Section, American Water Works Association.



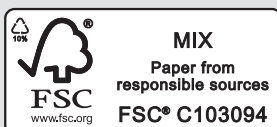
www.kelmanonline.com

Managing Editor: Scott Kelman

Design/Layout: Daniel Goulet

Marketing Manager: Al Whalen

Advertising Coordinator: Stefanie Hagdiakow



SUMMER 2016

CONTENTS

FEATURES

MI-ACE 2016 PREVIEW 19

15TH ANNUAL AWWA WATER MATTERS! FLY-IN 35

LEAD AND COPPER RULE IMPLEMENTATION UPDATE 36

THE REVISED TOTAL COLIFORM RULE IS IN EFFECT 37

YP SUMMIT 2016: THE BRILLIANCE OF UNITY 38

DEPARTMENTS

Chair's Message 7

Director's Report 11

Executive Director's Message 14

Council News 16

Member Update 40

News & Notes 43

Professional Directory 45

Ad Index 46

PURE

engineering results

ftc&h

Fishbeck, Thompson, Carr & Huber, Inc.
engineers | scientists | architects | constructors
800.456.3824 | ftch.com



Re-NEW·Rebuild·Replace

SAY GOODBYE TO GRINDER HEADACHES



When other companies' grinders choke, stall or wear out prematurely, Franklin Miller can get you up and running fast with a better, stronger swap-out unit!

It's easy! We can replace the full working end of your major brand grinder with a brand new grinder "lower works" featuring "cutter cartridges" for a higher level of reliability and durability. So why settle for a rebuild of that same old tired unit?

Let's get something started that lasts!



**Franklin
Miller**® Since 1918

www.franklinmiller.com

Call Toll Free 1-800-932-0599



LET US LEARN FROM THIS CRISIS

BARBARA MARCZAK, P.E.

It is hard to believe how fast this year as Chair of the Michigan Section has gone by. It has been busy and eventful. As I wrote in my last article, the events that have unfolded in Flint over the last year have changed how all of us view and think about safe drinking water. While it will be awhile before all the ramifications of this crisis have been felt or will develop, we have already been reminded of things we may have forgotten and learned some new things.

- **We cannot take water for granted.** Water affects many aspects of our daily lives. We need safe water to drink, to make coffee and tea, water our pets, brush our



CONTINUING EDUCATION AND HIGH QUALITY TRAINING OF THOSE WHO DESIGN, OPERATE, AND MAINTAIN OUR WATER SYSTEMS IS CRITICAL.

teeth, and to cleanse ourselves. The value of water has been thrust into the spotlight and we should take advantage of the public's interest to explain the intricacies of making the water safe and the need to properly maintain and fund our water systems.

- **We need to continually improve our knowledge about**

water supply, treatment, and distribution. Continuing education and high quality training of those who design, operate, and maintain our water systems is critical. One of the Michigan Section's missions is to provide timely and relevant training.

- **We can help each other.** This is also one of the purposes of the

**PITTSBURG
TANK & TOWER
MAINTENANCE CO., INC.**

SAVE!
We have a crew in
YOUR AREA!

Inspections	Repair	New & Used	Tanks
Wet Dry ROV	In Service Cleaning Paint Insulation	Relocation Erection Dismantles	Elevated Underground Ground

ROV inspections can be viewed on TV console during inspection & DVD provided. All inspections include bound reports, recommendations, and cost estimates.

Patrick Heltsley (270) 826-9000 x 4601 270-748-1325	Don Johnston (270) 826-9000 x 1001 270-748-1343
--	--

www.watertank.com





DIXON ENGINEERING, INC.
Engineering and Inspection Services for the Coating Industry

*The Midwest's
Tank Inspection Leader*

Since 1981, Dixon Engineering has been recognized as a leader in the storage tank and coating inspection industry. Our clientele consists of industrial, municipal, state, and federal clients. Dixon has experience with virtually any type of potable water storage tank and coating systems. For cost effective solutions to your storage and coating maintenance needs - specify Dixon Engineering. Let our expertise help you preserve the value of your facilities.

DIXON ENGINEERING, INC.
www.dixonengineering.net

1104 Third Ave.
Lake Odessa, MI 48849

Office: (616) 374-3221
Fax: (616) 374-7116



Inspection Services:

- Tank Maintenance Inspections
- Underwater (Dive) Inspections
- Warranty Inspections
- Underwater (ROV) Inspections
- Tank Coating Applications
- Bridge Coating Inspections
- New Tank Welding and Coatings
- Security Maintenance Inspections

Engineering Services:

- Tank Repainting Specifications
- Cathodic Protection Specifications
- Specification Review
- Antenna Design and Review
- Tank Structural Repair Specifications
- Tank Rehabilitation
- Coating System Failure Analysis
- Treatment Plant Coating Specifications

Our staff is comprised of engineers and NACE, SSPC, AWS, and API certified inspectors.

Visit our website at <http://www.dixonengineering.net> for more information about these and our other services.

Michigan Section. We provide training as well as opportunities to network with each other. I personally have met many people through this organization that I never would have otherwise. In addition to having friends, I have technical resources that I may call on for assistance when needed.

- **We can respond and stay relevant.** While it is unfortunate to have to learn from crises such as those experienced in Flint, we

have been able to provide timely and relevant summits and training for members. Both the Michigan Section and the Association have been able to provide technical resources, offer assistance and engage in conversations throughout the country. We are also engaging with Federal and State legislators to make sure they understand the issues and make careful and thoughtful evaluation of new legislation.

While I am not happy that we have had to respond to a crisis, such as what has occurred in Flint this year, I am very proud of how we have been able to respond and provide resources to our members. In addition to the Section's general response and resources, we should recognize the special efforts of one of Michigan's own utility members, the Lansing Board of Water and Light (LBWL). Located less than 60 miles from Flint, the City of Lansing can be considered a "poster child" for lead service line replacement in the United States. At the urging of water system managers over a decade ago, the LBWL committed to removing all lead service lines so they would not have to rely on corrosion control to protect customers from the potential dangers of lead. The LBWL developed efficient and cost effective ways to accomplish the work. The LBWL in Lansing is now in the national spotlight and is generously sharing their experience with Flint water department personnel and with many other communities from around the country. They have taken on this very public role in addition to their normal work to respond to information requests, present at seminars, and allow visits to view their removal techniques. The LBWL represents the spirit of AWWA membership in all respects and I would like to personally thank the LBWL and all its employees for their efforts. They have been generous with their time and talent.

The year has gone more quickly than I could have imagined. I want to thank all of the volunteers that have and will continue to make the Michigan Section AWWA a great organization. Volunteers in all capacities are the heart and soul. We could not have done what we do without great staff. Thanks to Bonnifer, Eric and Ariel. I would also like to thank those that have served in leadership roles before me, alongside me, as well as those that will serve after. I am honored and privileged to know all of you. 💧

CLAMP DOWN ON INVENTORY COSTS!



That's right! The Quick Cam® Rapid Seal Repair Clamp features a double range body, allowing a substantial reduction in inventory. No need for extra on-hand sizes for repairing breaks, holes and splits in water and sewer piping.

But that's not all. Check out these features:

- ✓ High Performance = Bigger Safety Factor
- ✓ Slide On - Slide Off Lugs = Low Profile Under Pipe
- ✓ Stainless or Ductile Lugs = Your Choice
- ✓ Rapid Seal = Faster Stop of Leak and Easier to Install

Contact us for complete information.
Email sales@tps.us or phone 716-372-0160.

 **Total Piping Solutions, Inc.**



POTABLE WATER MIXING/ICE PREVENTION

"These mixers give peace of mind, especially in winter."

Cary Johnson, water operations mgr., Rochester Public Utilities, Rochester, Minnesota



POTABLE WATER/THM REMOVAL

"GridBee in-tank aeration is effective and affordable."

Tony Linder, WTP division chief, Dept. of Water Supply, County of Maui, Hawaii



WASTEWATER MIXING/BASINS AND LAGOONS

"We reduced our nitrate levels and lowered our energy costs."

John Willis, wastewater plant supervisor, Ventura, California



LAKES AND RAW WATER

"We reduced WTP operating costs caused by algae blooms."

James A. Brown, water production manager, Newton County, Georgia



WASTEWATER MIXING/WET WELLS

"Don't let wipes clog your pumps."

Curtis Rooth, foreman, Sewer Dept., Cromwell, Connecticut

Improve **all** of your water

Water operators and engineers rely on GridBee® electric and air-powered mixers and SolarBee® circulators to help reduce operating costs, achieve better compliance and improve water quality. Factory field service available.

Call us today for prompt, friendly service and fast, reliable results. 1-866-437-8076

AMERICAN INTRODUCES ZINC-COATED DUCTILE IRON PIPE



AMERICAN is proud to introduce a proven, life extending product for iron pipe that is now available to domestic markets – zinc coating. The zinc coating system has been used overseas to extend the life of iron pipe for many years. As a result, the coating has an established ISO standard that ensures quality and effectiveness.

AMERICAN began supplying zinc coating for our export orders more than 30 years ago. Now, we're pleased to offer this proven system to markets here at home. Zinc coating significantly extends the life of an already rugged and reliable product – ductile iron pipe.



AMERICAN
DUCTILE IRON PIPE

THE RIGHT WAY

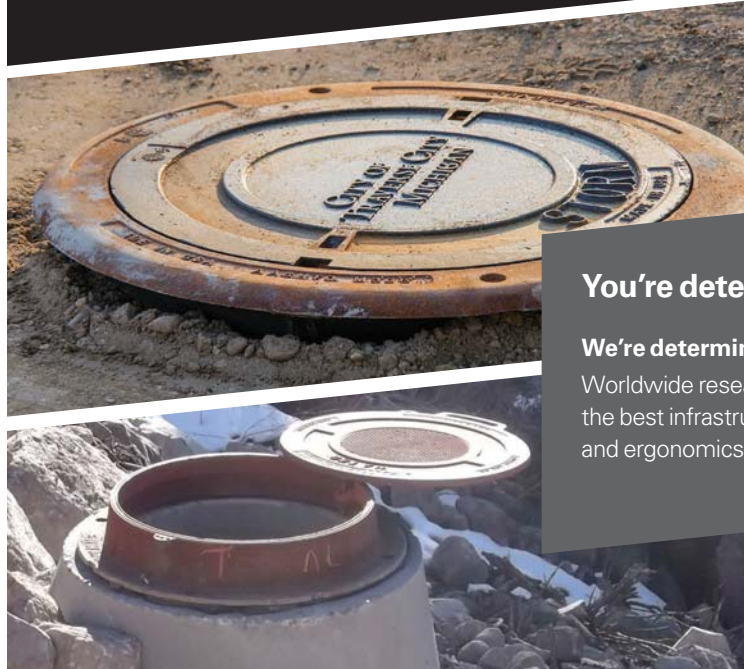
AMERICAN-USA.COM
1-800-442-2347

EOE/Minority/Female/Veteran/Disability

DUCTILE IRON PIPE	FLOW CONTROL	INTERNATIONAL	SPIRALWELD PIPE	STEEL PIPE
-------------------	--------------	---------------	-----------------	------------



Learn more at ejco.com or call 800 626 4653
Made in the USA



You're determined to build a stronger community.

We're determined to deliver solutions that help you do it.

Worldwide research and collaboration gives EJ the edge in creating the best infrastructure solutions—with a focus on safety, functionality, and ergonomics.



UNDER PRESSURE

BRIAN STEGLITZ, DIRECTOR

They say time flies when you are having fun! Well as I sit and prepare my final *Water Works News* Director's Report, I can't quite believe that my three year term has come to a conclusion. Last year at the Business Meeting at the Michigan Section Annual Conference, you approved the nomination of Mark Coleman to replace me as Director for the next three years. I know many of you already know Mark, and I have no doubt that he will serve you well as Director and as your liaison to AWWA, and maintain the high standing and perception of Michigan in the Association and across the country.

While there have been many challenges that we have faced as an



AS AN ORGANIZATION, WE HAVE COME A LONG WAY IN THE PAST THREE YEARS AND WE SHOULD BE PROUD OF THIS PROGRESS.

organization and industry over the last three years, I remain encouraged about where we are as an organization and am optimistic about how our industry will be perceived in the future. About three years ago, the Michigan Section completed a strategic plan that revised how the section's governance was organized. Since that time we have restructured our committees, formed

councils to oversee committee work to ensure continuity of practices, and sunset many committees that were either struggling or had singular focus. Many committees were absorbed by the newly developed council structure. While there was some apprehension about these changes, the organization has become more streamlined and focused on our mission. We have



Solve dry start problems with Vesconite Hilube bushings

- Low friction
- No swell
- Increase MTBR
- Reduce electricity
- Quick supply

CALL FOR SAMPLE

Tollfree 1-866-635-7596
 vesconite@vesconite.com
 www.vesconite.com



Layne

**WELL REHABILITATION
 PUMP REPAIR
 WATER SUPPLY**

**TREATMENT EQUIPMENT
 FILTER INSPECTION
 WATER WELL DRILLING**

**CALL TODAY: LANSING, MI | 517.323.4931
 www.layne.com**

strived to maintain the involvement and commitment of our active volunteers through the restructuring.

Two years ago we hired our first Executive Director, Bonnifer Ballard. She has played a significant role in fostering the restructuring and supporting the new councils as they establish themselves. Bonnifer has also helped to develop a business plan that will ensure the Section's long-term financial sustainability while looking to bolster

our educational program and grow our membership. To support Bonnifer, we have added 1 ½ staff, Eric Johnson as meetings coordinator, and Ariel Veneziano as a part-time bookkeeper.

As an organization, we have come a long way in the past three years and we should be proud of this progress. The current organizational structure allows us to be more nimble and responsive to your needs as members of the Michigan water community.

As an example of the responsiveness of the Michigan Section AWWA, the Section pulled together in short order a Summit of water utility members to discuss lead issues and challenges for utilities in the wake of the crisis that occurred in Flint, MI. This event was free for utility members and approximately 50 people participated, which was the capacity of the event. The section was able to get representation from the Washington, DC office of AWWA to participate and provide regulatory expertise at this event.

The crisis in Flint has not yet dissipated. The media attention remains constant and overwhelmingly negative. There are many efforts in place to address the water quality problems faced by Flint's customers. AWWA has provided and continues to provide support for many of these efforts.

These are interesting times to be a water professional. While many communities may not have the water quality challenges faced by Flint, MI, the public interest and focus is high. Where many of our customers have historically taken the services that we provide to them on a daily basis for granted, we are no longer out-of-sight, out-of-mind. The attention and focus on the drinking water community is unprecedented. The perception of our industry in the future relies on taking control of this public conversation. The conversation should be about the positive work that we perform on behalf of our customers every day, and the high quality safe water, that we produce. However, the risks should not go without mention. The drinking water infrastructure in Michigan is in need of investment and repair. Lead service lines are one component of the need, but there are many others. The risks of neglecting these infrastructure needs are great. No water utility wants to jeopardize the quality of the product it provides to its customers. Now is the time to deliver this message...while our customers are listening.

Thank you again for your support over these past three years, and I look forward to continuing to serve AWWA as a volunteer for many years to come. 💧



WATERWORKS SYSTEMS

PROCESS EQUIPMENT

- ◆ Aerators / Lagoon Systems
- ◆ Algae-Sweep Mechanisms
- ◆ Chemical Feed Systems
- ◆ Digestion / Sludge Mixing/ Heating
- ◆ Disinfection—Chlorine / UV Systems
- ◆ Fiberglass Equipment
- ◆ Gas Scrubbers— Chlorine/ Sulfur Dioxide
- ◆ Grit Removal
- ◆ Incinerator / Scum Concentrator
- ◆ Industrial Pollution Control
- ◆ Membrane Systems
- ◆ Odor Control
- ◆ On-Site NaOCL
- ◆ Screening / Conveyors
- ◆ Sedimentation / Clarifiers
- ◆ Sluice & Slide Gates / Valves
- ◆ Tanks / Tank Covers
- ◆ Thickeners / Dewatering
- ◆ Trickling Filters / Bio-Towers
- ◆ Vacuum Collection Systems
- ◆ Water Filtration

DAVE CONNORS • MATTHEW KRONK
CHUCK KRONK
810.231.1200
www.waterworkssystem.com



METER LLC

Badger meters and reading systems.



Orion® AMA



E-Series®



M-Series®

...and everything else for water distribution.



Pipe, Hydrants, Valves, Brass, Repair Clamps, Horns, Curb Boxes

Ph: 800-433-4332 Email: sales@slcmeter.com

Fax: 248-625-8650 www.slcmeter.com

WQTC

The Premier Conference for
Water Quality Professionals
Around the World

2016

Indianapolis, Indiana
November 13-17, 2016

Register Today!

Water professionals around the world attend AWWA's Water Quality Technology Conference & Exposition, the event of the year for providing answers about quality water in a continually changing environment. For more information, visit www.awwa.org/wqtc16.



WATER QUALITY
Technology Conference



PROUD TO BE PART OF WATER PROFESSIONALS COMMUNITY

BONNIFER BALLARD, EXECUTIVE DIRECTOR

When I was little, maybe four or five, I went grocery shopping with my mom. This grocery store was a small family owned store that had been in our neighborhood for years. Mr. Buster was kind and thoughtful and took the time to know his customers. My mother was greeted by name every time we walked in.

On this particular day, I stood as I normally did in front of the candy bars

while my mother checked out. I asked if I could have one; she said "not this time." I asked again; "I said no," came the answer firmly. But somewhere in my tiny little brain, I decided that I was going to have a candy bar anyway and I picked one out and put it in my pocket.


Out in the parking lot, as my mother unloaded groceries, I took out the candy bar and proceeded to unwrap it. Of course, I was caught red handed with the goods in my mouth. She

made me spit out the bite I had taken, marched me back into the store, and made me apologize to Mr. Buster for stealing from him.

When we were back out in the car, my mother told me something I never forgot. "You should never do something if you can't do it when I'm looking over your shoulder." It is one of my earliest memories. The lesson I learned that day is what I came to call the mom test. If what you do is brought to light, would mom think it was ok to do? That teaching moment has been a guiding principle for me throughout my life, one that has shaped the person I've become.

I tell you this story so that you understand when I say how proud I am to be part of this amazing community of water professionals. We are living through some turbulent times. We are experiencing a crisis of confidence that can be demoralizing and sometimes feels insurmountable. Yet, time and again, you pass the "mom test" and more. You so often not only adhere to the regulatory requirements, but go above and beyond to help customers feel more confident about the water that comes out of their taps. You employ best practices and push yourselves to learn more to ensure their water is as clean and safe as possible. You share information freely, volunteer your time, and collaborate on solving problems all for the purpose of providing clean, safe drinking water to Michigan communities.

Thank you so much for doing what you do and for allowing me to share in this community. 💧

 **THANK YOU SO MUCH FOR DOING WHAT YOU DO AND FOR ALLOWING ME TO SHARE IN THIS COMMUNITY.**



WATER LOSS CONTROL

- **LARGE METER EVALUATION, TESTING & CALIBRATION**
- **WATER AUDITS**
- **LEAK SURVEY / LEAK PINPOINTING**

ASSET MANAGEMENT

- **VALVE EXERCISING ASSESSMENT**
- **FIRE HYDRANT FLOW TESTING**
- **FIRE HYDRANT ASSESSMENT**
- **SANITARY & STORM SEWER STRUCTURE LOCATION, INVENTORY & DOCUMENTATION**

WATER QUALITY

- **UNIDIRECTIONAL WATER MAIN FLUSHING**
- **CROSS CONNECTION CONTROL SURVEYS & INVENTORY**
- **BACKFLOW ONLINE / WEB-BASED MANAGEMENT SYSTEMS**

M.E. SIMPSON Co., Inc.
WATER SYSTEM SPECIALISTS

Kennedy INDUSTRIES

PUMPS | VALVES | CONTROLS | FIELD SERVICE | REPAIR





MEMBERSHIP COUNCIL REPORT

AWWA reaches 50,000 members representing more than 5,000 water utilities! The Michigan section is growing too. We are proud to have welcomed 126 new individual members to our section in 2016. We are looking forward to another great year full of exciting networking opportunities including the OH YP and MI YP Mixer baseball game in Detroit as well as the section's annual conference.

Networking Opportunities

Ohio and Michigan may share a border but there is no love lost when talking about rival sports teams. The Michigan Section Young Professionals collaborated with the Ohio Section Young Professionals on June 25th in Downtown Detroit while the Detroit Tigers take on the Cleveland Indians. Thanks to all of

those who came out to show your support for the sections, the water industry, and our YPs. We hope to continue this new tradition. Contact Jenna Karazim for more info at JKarazim@a2gov.org if you would like to participate or help.

The YP's have also been very busy planning a Westside Plant Tour in South Haven (scheduled for August 12) as well as a U.P. Plant Tour with MWEA. While the YP group is looking for new young professionals, they also look to mix veteran experience to help make these events an opportunity for networking and to learn about the group. We can't do without veteran membership's participation.

Section Annual Conference

Are you considering attending the Michigan Section Annual conference

for the first time? Have you been in the water industry less than 10 years or are under the age of 35? Let the Membership Council help you get to MI-ACE by providing free registration. Does your manager need additional justification?

- Fulfill your CEC requirements as an operator or as a PE.
- Focus on the knowledge and information you will bring back to your team.
- Remind your supervisor that MI-ACE offers opportunities to brainstorm ideas and challenges facing the industry and our region.
- Be ready with a plan to show who will cover your workload while you are attending MI-ACE.

Need more? Check out the section website for our justification toolkit.

While attending the conference the membership council encourages you to check out some of our many events:

9/13 - First time attendee breakfast

If you are attending MI-ACE for the first time, allow us to treat you to breakfast. You can learn more about the technical and networking opportunities at MI-ACE and meet industry leaders.

9/14 - A View from the Top and a Glimpse from the Trenches

Want to understand how shifting demographics and a multi-generational work force can affect your company/utility? Hear how top Michigan Section water professionals have surpassed obstacles in diversity and inclusion and where the next generation will take us.

9/15 - News from the Field

Learn about water projects, big and small, happening across the section as our future leaders present pictures, budgets and information on some of the region's top projects from 2016. We are currently accepting pictures and write ups on all projects. Email Matt Parks at matt.parks@ohm-advisors.com for more information.

ENVIRONMENTAL ANALYSIS WITH PROVEN RESULTS

KAR Laboratories, Inc.

.....

Kalamazoo, Michigan
Serving Michigan for over 55 years

Call Us for Your Environmental Testing Needs
 Drinking Water • Soil • Air
 Wastewater • Hazardous Waste

PROVEN LABORATORY PERFORMANCE
 Ultra-Trace Mercury analysis - EPA Method 1631
 BioSolids
 Available Cyanide - Method OIA 1677
 EDTA in water by HPLC

Phone (269) 381-9666
 Fax (269) 381-9698
www.karlabs.com
 Email info@karlabs.com

NOMINATIONS COMMITTEE

This has been an exciting and challenging endeavor for your 2016 Nominations Committee. Being implemented for the first time this year, the Secretary-Treasurer position is now a 3 year term in accordance with the revised Michigan Section By-Laws approved during last year's conference. In addition, the revision eliminated the Vice-Chair and Assistant Secretary-Treasurer positions that typically would have been included in the Nomination Committee evaluation efforts. Finally, this year's recommendation includes 3 trustee positions. In addition to the normal two 3-year terms, there is a 1-year term to fill as a result of the resignation of one of the current trustees.

The Nominations Committee THANKS all of the nominees who submitted their name for consideration. Once again, the committee had an excellent field of candidates to choose from and the choices were very difficult. All of the candidates were eminently qualified. After much deliberation, the committee nominates the following individuals for the noted available positions:

Secretary-Treasurer 2016 - 2019

Michael Williams, Peerless Midwest, Inc.

Trustee 2016 - 2017


Jamie Fleming, City of Wyoming, Utilities Dept.

Trustee 2016 - 2019

Greg Alimenti, City of St. Joseph, WTP

Trustee 2016 - 2019

Joseph VanderStel, City of Grand Haven, Northwest Ottawa WTP

The election will take place during the Annual Business Meeting on Thursday, September 15, 2016 at approximately 7:45 AM during our Annual Conference at the Boyne Highlands Resort, in Harbor Springs, Michigan. Your 2016 Nominations Committee, comprised of Board Members Bruce Bartley, Mark Coleman, Bill Fritz, Brian Steglitz, Amy Vail and John Willemin along with At-Large Members Molly Maciejewski and Tina Pawlak look forward to seeing you all there! 



Get WSU



A Problem Solving Company to Help You With Your Water Treatment Programs.

Mark McKee:

765-719-2956 mmckee@getwsu.com

LARGE INVENTORY FOR QUICK DELIVERY

TOP QUALITY AUTOMATIC CONTROL VALVES

CUSTOMER FOCUS

TECHNICAL TRAINING

INNOVATIVE PRODUCTS

FIELD SERVICE

SUPERIOR PRODUCTS & SERVICES

Since 1936, Cla-Val has been the leading supplier of top quality valves and associated products to the waterworks industry.

From the standard hydraulic valves you have trusted for decades, to the latest in electronic accessories that enhance the performance of your automatic control valves, Cla-Val can provide the solutions you need to get the most out of your distribution piping systems and water treatment facilities.

TRAINING

Cla-Val also offers comprehensive technical training on automatic control valves. Topics range from valve selection for system design to maintenance and troubleshooting.

Contact our office today to schedule a training seminar

Introducing the PC-22D Electronic Pump Control Panel

- Pre-Programmed Valve Controller for Booster Pump and Deep Well Applications
- Precise & accurate control
- Displays time for system to build pressure & for single or dual chamber pump control valves to open
- Automatic shutdown of pump in emergency situations



Cla-Val

Area Sales Engineer: Michigan
Contact Jim Graber • jgraber@cla-val.com
Direct Dial: 440.523.0496
Regional Office: 800.451.3030
www.cla-val.com



Authorized Master Distributor: JETT Pump & Valve, LLC
248.673.2530 • insidesales@jettump.com
24-Hour Emergency Field Service



Water solutions for a healthy planet.

We are 27,000 smart, talented and driven people committed to exceptional and sustainable outcomes. We collaborate. We innovate. We deliver results.

We are Arcadis.

Improving quality of life.

WWW.ARCADIS.COM



SULZER www.sulzer.com

Sulzer's SNS process pump range not only meets the criteria, but breaks all records by exceeding MEI 0.7 requirements! The Sulzer SNS pump range offers maximum efficiency, improved reliability, and minimized total cost of ownership (TCO). It is truly ahead of the game.

FPE Fluid Process Equipment
a SunSource Company

For more information, contact
Jim Hoffman • 269-345-1923
jhoffman@sunsrce.com
www.fpepumps.com

KERR PUMP AND SUPPLY
WATER & WASTEWATER TREATMENT EQUIPMENT

- Centrifugal Water Pumps
- Vertical Turbines
- Submersible Pumps
- Centrifugal Non-clog Pumps
- Progressive Cavity Pumps
- Positive Displacement Blowers
- Centrifugal Blowers
- Mobile Engine Trash Pumps
- Belt Press
- Vacuum Pumps
- Packaged Water Booster Stations
- Control Valve and Meter Stations
- Packaged Wastewater Lift Stations
- Metering Pumps & Chemical Feed Systems
- Custom Control Panels
- Headworks Screens
- Field Service – In House Repair

REPRESENTING:

- AURORA-FAIRBANKS MORSE-HYDROMATIC
- SMITH & LOVELESS • SYNCROFLO
- FLOWROX • HAYWARD GORDON • TUTHILL BLOWERS
- BJM • MAGNUM • OR-TEC • NETZSCH
- KERR CUSTOM CONTROLS
- UL 508A / UL 698A CERTIFIED

OFFICES
OAK PARK, MI
PHONE: 248-543-3880 • FAX 248-543-3236
GRAND RAPIDS, MI
PHONE: 616-698-2808 • FAX 616-698-9137
VISIT OUR WEBSITE www.kerrpump.com
Email: sales@kerrpump.com

e.RIS
eramosa reporting and information system

Big Data
Analytics
Regulatory Reporting
Integrated Data

excellence. period.

Detroit • Guelph • Calgary • Toronto • London
eramosa.com 313 • 556 • 2840

TREAT. TRANSPORT. TASTE.

MI-ACE 2016 >

Conference Preview



78TH Annual Conference and Exhibits

BOYNE HIGHLANDS > SEPTEMBER 13-16

HARBOR SPRINGS, MI

[RETURN TO TABLE OF CONTENTS](#)

JOIN YOUR COLLEAGUES FOR A FABULOUS PROFESSIONAL DEVELOPMENT EXPERIENCE.

TREAT. TRANSPORT. TASTE.

Treat your water with the latest technology

Best practices to **transport** water safely to your community

When to modify your procedures to enhance **taste** and customer satisfaction

Schedule at a Glance

TUESDAY, SEPTEMBER 13	
10:30 AM	Annual Golf Outing - shotgun start at noon.
6:30 PM - 8:00 PM	Welcome Reception in the Exhibit Hall

WEDNESDAY, SEPTEMBER 14	
7:00 AM	YP and First Timer Breakfast
8:00 AM	Opening General Session
10:00 AM	Exhibit Hall Opens Refreshments in Exhibit Hall SWIE Chance Auction Opens
10:15 AM	Women on Water Networking
11:30 AM	Awards Lunch (ticketed)
1:30 AM	Afternoon General Session
4:30 PM - 6:00 PM	Happy Hour in the Exhibit Hall

THURSDAY, SEPTEMBER 15		
7:45 AM	Section Annual Business Meeting	
8:15 AM	◇ Lead Track	◇ Treatment Track
11:30 AM	Fuller Luncheon (ticketed)	
1:30 PM	◇ Data Management Track	◇ Distribution Track
5:30 PM - 8:00 PM	Water and the History of Beer Dinner (ticketed)	

FRIDAY, SEPTEMBER 16	
7:30 AM	Leadership Breakfast (invitation only)
8:30 AM	Closing General Session
Noon	Conference adjourns

TREAT. TRANSPORT. TASTE.

Gold Sponsor



AMERICAN WATER
RESOURCES®

Service Line Protection Programs for Homeowners



Featured Speakers



DAVE DEMPSEY, POLICY ADVISOR, INTERNATIONAL JOINT COMMISSION

The sound was like thunder. Bass-heavy, ground-shaking booms at rhythmic intervals. It lured Dave Dempsey from his sleeping bag one fine summer day in 1981. What he found mesmerized him and forever guided his career path. He had awoken to the waves of Lake Superior crashing against the rocks at Pictured Rocks in Michigan's Upper Peninsula. He thought to himself, "I want to make sure people 500 years from now can have this same experience."

And so young Dave Dempsey set out to protect his Great Lakes. He became an environmentalist. And a conservationist. And an advisor to the governor. And historian. And author. And a policy advisor to Great Lakes governors and premiers. And a mentor. And... well, you get the picture.



DAVID LAFRANCE, AWWA CEO

David LaFrance has a long history of participation in AWWA, beginning in 1995 when he first became a member and volunteered on the Rates and Charges Committee. He was named CEO in March 2010.

Prior to joining AWWA, David spent 16 years at Denver Water, eventually becoming the Director of Finance. While at Denver Water he reported directly to the GM and worked closely with the Board of Water Commissioners on all aspects of rate setting, strategic planning, capital financing, and legal challenges. Prior to joining Denver Water, David was Project Manager and rate Consultant for CH2M Hill and a Natural Resource Economist for the Corps of Engineers. He holds a BS in Economics from Lewis & Clark College; and an MBA in Finance from the University of Colorado.



ROBERT MCMAHAN JR., KETTERING UNIVERSITY

Dr. McMahan became the 7th President of and Professor of Physics at Kettering University in August 2011. Kettering is a premier engineering, science and business university dedicated to experiential learning and co-operative education, and is a national leader in preparing STEM entrepreneurs and innovators.

Dr. McMahan has had a rich and lustrous career including teaching, consulting, entrepreneurship, investment, and policy. He participated in research that led to significant cosmological discoveries; has presented to the National Academies of Science, the US Federal Reserve, the US Congress, and international governments; and he holds multiple domestic and international patents.



STEVE DENNIS, AWWA VICE PRESIDENT AND VISITING OFFICER

Steve Dennis recently retired following a thirty-seven year career with the Alameda County Water District located in the San Francisco Bay Area. His career experience includes work in distribution system operation, groundwater protection and management, water quality, and environmental compliance. Additionally, Steve served for many years as program manager for emergency preparedness and response, security, and occupational health & Safety. He possesses a B.S. in Business Administration with a management concentration.

Steve has been actively engaged in AWWA since 1998 and currently serves on the Security and Emergency Preparedness Committee. He is very active in the California-Nevada Section of AWWA having served on various committees and in Board positions including Section Chair from 2011-2012. Steve was honored with AWWA's George Warren Fuller Award in 2013 and with California-Nevada's George A. Elliott Memorial Award in 2009.

TREAT. TRANSPORT. TASTE.



JENNIFER WARNER, REGIONAL LIAISON, WATER RESEARCH FOUNDATION

Jennifer is a regional liaison with the Water Research Foundation responsible for the Great Lakes states, the New England states, and the Canadian provinces of Ontario and the Atlantic Maritimes. Jennifer served as a research manager focusing on source water protection and watershed management before assuming her role as regional liaison. Prior to joining WRF, Jennifer spent several years in environmental consulting. Jennifer has a Master of Science degree in Civil and Environmental Engineering from the University of Wisconsin-Madison and a Bachelor of Science degree in Environmental Engineering from Michigan Technological University. Jenn lives in Golden, Colorado with her ultrarunner husband Bryan, their daughter Sade, and princely cat Raphael.



JOAN ROSE, PROFESSOR, MICHIGAN STATE UNIVERSITY

Joan is an international authority on water microbiology, water quality, and public health safety, and she co-directs both MSU's Center for Advancing Microbial Risk Assessment (CAMRA) and its Center for Water Sciences (CWS).

Joan, together with her team of "water detectives," is developing new genetic analytics to study waterborne health threats. She is a pioneer in the emerging science of viral metagenomics. Such technology promises to significantly improve methods of protecting water and food supplies. Her global activity includes investigation of waterborne disease outbreaks and the study of water supplies, treatment, and reclamation. Her applied research interests include study of microbial pathogens in recreational waters and climatic factors impacting water quality.



KEITH CREAGH, DIRECTOR, MDEQ

Keith Creagh brings a vast amount of experience and dedication to environmental stewardship to his position as director of the Michigan Department of Environmental Quality. He has an extensive background in leadership, policy development, strategic planning, and relationship building. He also brings to his position detailed knowledge of state government and long-standing involvement in the interplay between state and federal programs. Prior to his appointment on December 30, 2015, by Governor Rick Snyder, Creagh served as director of the Michigan Department of Natural Resources. He also previously served as director of the Michigan Department of Agriculture and Rural Development. Creagh's service with state government began in 1974 and has included a wide range of positions. Creagh has a bachelor of science degree in forestry from Michigan Technological University.



Full Schedule with Technical Sessions

TUESDAY, SEPTEMBER 13

6:30 PM – 8:00 PM
Welcome Reception in Exhibit Hall

WEDNESDAY, SEPTEMBER 14

8:00 AM – 10:00 AM Opening General Session

8:00 AM
Welcome and Opening Remarks
Barbara Marczak, MI-AWWA Chair

8:15 AM
Dave Dempsey,
International Joint Commission

9:00 AM
David LaFrance, CEO of AWWA

9:15 AM
Robert McMahan, Jr., PhD
President of Kettering University

10:00 AM – 11:30 AM
Exhibit Hall Opens
Refreshments in Exhibit Hall
SWIE Chance Auction

10:15 AM
Women on Water Mixer

11:30 AM – 1:15 PM Annual Awards Lunch (ticketed)

1:30 PM – 6:30 PM
Exhibit Hall Open
Vendor presentations in Exhibit Hall
(topics and schedule available onsite)
SWIE Chance Auction

1:30 PM – 4:30 PM Afternoon General Session

1:30 PM
AWWA Visiting Officer –
AWWA Vice President Steve Dennis

2:00 PM
Jennifer Warner,
Water Research Foundation

2:30 PM
Joan Rose, Michigan State University
Stockholm Water Prize Winner

2:45 PM
Refreshments in Exhibit Hall

3:00 PM
Keith Creagh, Director of MDEQ

3:30 PM
Update on Safe Water in Ecuador
SWIE Committee

4:00 PM
News from the Field
Young Professionals Committee

4:30 PM – 6:00 PM
Happy Hour in the Exhibit Hall

5:45 PM
SWIE Chance Auction drawings

THURSDAY, SEPTEMBER 15

7:45 AM
Section Business Meeting
Barbara Marczak, MI-AWWA Chair

8:00 AM
Section Update
*Bonniifer Ballard,
MI-AWWA Executive Director*

8:05 AM
Best Tasting Water Trophy Presentation
*Gary Wozniak and Dave Stinson,
Co-Chairs of Taste Off Committee*

8:15 AM – 11:15 AM Lead Track

8:15 AM
WRF Lead Research
*Johnathan Cuppett,
Water Research Foundation*

8:45 AM
How to Pay for Lead Line Replacements
Dawn Lund, Utility Financial Solutions

9:15 AM
Lead Control Strategies &
Optimizing Water Quality
David Cornwell, EE&T

9:45 AM
Break

10:00 AM
Implementing Directional Flushing
TBD

10:30 AM
Water Distribution Asset Inventory
Wayne Pratt, Wachs Water Services

11:00 AM
Lead Track Discussion

8:15 AM – 11:15 AM Treatment Track

8:15 AM
Aquifer Sustainability in Michigan
Mike Williams, Peerless-Midwest, Inc.

8:45 AM
Vibration Monitoring and the
“Internet of Things”
David DeVos, Rockwell Automation

9:15 AM
Conventional Granular Media
*Stuart Humphries,
Orthos Liquid Systems, Inc.*

9:45 AM
Break

10:00 AM
St. Louis Water Supply Replacement
*John Willemin,
Fishbeck, Thompson, Carr & Huber*

TREAT. TRANSPORT. TASTE.



10:30 AM

Yes Virginia, They Are Still Constructing Conventional Water Treatment Plants

John O'Brien, Genesee County Drain Commission

11:00 AM

KWA Lake Huron Intake Pumping Station

Aaron Uranga, Hubbell, Roth & Clark

11:30 AM

George W. Fuller Luncheon (ticketed)

1:30 PM – 4:45 PM Data Management Track

1:30 PM

Transforming Data into Knowledge
Bryan Sharpnack, Hach

2:00 PM

Benefits of Collaborative Asset Management Plan
Ben Whitehead, Black & Veatch

2:30 PM

Real Time Intelligence on Pumping Stations
Daniel Stickel, Waterford Township

3:00 PM

Break

3:15 PM

Panel on Workforce Development: Diversity and Emerging Professionals
Jaime Fleming, City of Wyoming; Carrie Cox, Oakland County Water Resource Commission; Tina Pawlak, City of Holland

1:30 PM – 4:45 PM Distribution Track

1:30 PM

Pre-Chlorinated Pipe Bursting Minimizes Disruptions
TBD



2:00 PM

How GIS Can Rewrite Your Distribution Prints in Real Time
Toby Riley, Lake Charter Township

2:30 PM

Initial Valve Inspection and Exercise Program
William Popp, Johnson and Anderson

3:00 PM

Break

3:15 PM

Today's AMR/AMI Technology More Than Just Meter Reading
Steve Flaherty, United Systems/Itron

3:45 PM

Detroit District Meter Area's Lessons Learned
Biren Saparia, Great Lakes Water Authority

4:15 PM

Using Cloud Based Software to Manage a Successful Cross Connection Program
Tom Engelsma, City of Wyoming

5:30 PM

Water and the History of Beer Dinner (ticketed)

FRIDAY, SEPTEMBER 16

7:30 AM

Section Leadership Breakfast (invitation only)

8:00 AM – 9:00 AM

Hot Topic
TBA

9:00 AM

MDEQ Regulatory Update
Office of Drinking Water & Municipal Assistance

9:30 AM

Cyber Security Today
Steve Liebrecht, Rockwell Automation

10:00 AM

Break

10:15 AM

Ozonation and Bromate Formation
Jenna Karazim, City of Ann Arbor

10:45 AM

Panel on Media Relations
Clyde Dugan, East Lansing Meridian Water Authority; Ashley Kimble, Holland BPW

11:30 AM

A Day Without Water
Patrick Droze, OHM Advisors

Conference adjourns at noon.

Special Events

GOLF

ANNUAL GOLF OUTING *(ticketed event – additional fee applies)*

The MI-AWWA Annual Golf Outing will be held on Tuesday, September 13 at The Moor course of the Boyne Highland Resort. The Moor serves as a favorite for golf lovers.

This year, the Annual Golf Outing raises money for Safe Water in Ecuador (SWIE) and for the new One AWWA Operator Scholarship. SWIE helps to bring clean, safe water to communities in Ecuador. The Scholarship is a new partnership between the Association and the Section to help provide support for operators seeking additional education and training.

Schedule of the Day

- 10:30 AM Check-In at Bag Drop
- 11:00 AM Picnic Lunch
- 11:50 AM Game Rules at Your Cart
- 12:00 PM Shot Gun Start
- 5:30 PM Wrap Up and head to the MI-ACE 2016 Exhibit Hall for the Opening Reception

Event Features *(help raise more money for the cause)*

Putting Green – practice your putt before the scramble starts *(complimentary)*

Driving Range – warm up on the driving range *(complimentary)*

The Water Drive – a fun way to practice your aim, hit a line drive into a kiddie pool. *(\$1 per ball)*

Mulligans - \$5 for two shots *(limit two per player)*

Use a Pro – have a golf pro take a shot for you off a predetermined tee. *(\$1 per ball)*

Prizes for longest drive, closest to the pin, best overall team, worst overall team, and more.

All are welcome to participate in the Golf Outing but preference is given to those registered for MI-ACE 2016.

RECOGNITION

ANNUAL AWARDS LUNCH

(ticketed event – additional fee applies)

A wonderful event, the Annual Awards Lunch on Wednesday at 11:30 AM is the time for us to celebrate accomplishments in Michigan water. During the Lunch, we recognize awardees for the Raymond J. Faust Award, the Operator's Meritorious Award, the Edward Dunbar Rich Award, AWWA Water Drop Awards, and many others. Join your fellow attendees for lunch and help recognize 2016 awardees. Tickets are required for entry.

GEORGE W. FULLER LUNCHEON

(ticketed event – additional fee applies)

Named for industry titan George W. Fuller, this annual luncheon is the celebration event of the Conference. During this event, which begins on Thursday at 11:30 AM, any new inductees into the Michigan Water Industry Hall of Fame are announced. New Board members are installed as well and then this year's George W. Fuller Awardee is announced. Come enjoy a wonderful meal, get in on the fun of discovering who this year's Fuller nominee will be, and hear from the newly installed 2016-2017 Board Chair John Willemin.



TREAT. TRANSPORT. TASTE.



AUCTION

SWIE CHANCE AUCTION

The Chance Auction for Safe Water in Ecuador (SWIE) will be held in the Exhibit Hall during exhibit hours Tuesday evening and all day Wednesday. All money raised will support drinking water projects in Ecuador for indigenous communities in need of safe and reliable water. Visit participating exhibitor booths and other displays throughout the Exhibit Hall to browse donated items to be 'auctioned' and help us support the people of Ecuador in their quest for clean water!

How the Chance Auction works - Items will be 'auctioned' (raffled) by purchasing tickets (3 for \$5 and 15 for \$20) and placing them in jars associated with donated items. A winning ticket will be drawn from each jar near the end of Happy Hour on Wednesday evening just prior to the close of the Exhibit Hall.

You can help before you arrive. Donations of items valued at \$25 and up will be gratefully accepted. Examples of items donated in past auctions include gift cards, gift baskets, tools, electronics, handmade items, outdoor items, event tickets, and sports memorabilia.

For more information, to make a donation, or to volunteer, contact Jessica Howard at 734-547-4576 or jessica.howard@ohm-advisors.com.

NETWORKING OPPORTUNITIES

OPENING RECEPTION IN THE EXHIBIT HALL

(RSVP requested)

After you check into your room and get settled, come to the Exhibit Hall at 6:30 PM Tuesday evening for a drink, some nibbles, and to mingle with exhibitors and other attendees. Remember to stop by the Conference Registration Desk for your name badge. Name badges are required to enter the Exhibit Hall.

YOUNG PROFESSIONALS AND FIRST TIME ATTENDEES BREAKFAST

(RSVP requested)

Young professionals and first time attendees to MI-ACE have something in common. They need help navigating MI-ACE waters. If you are a water professional under 35 or have never been to a Section Annual Conference & Exhibit, RSVP and plan to attend this instructional breakfast and meet others like you. The breakfast starts at 7:00 AM Wednesday morning before the Opening General Session. You will hear from Section leaders on how you can get the most out of your attendance at the conference.

WOMEN ON WATER MIXER

(RSVP requested)

Come on ladies! Plan to join your peers on Wednesday at 10:15 AM for a fun and interactive hour of making some new connections and reconnect with friends and colleagues you haven't seen for a while. Designed especially for women in the water sector, you will be glad you attended.

HAPPY HOUR IN THE EXHIBIT HALL

Join your colleagues on Wednesday afternoon starting at 4:30 PM in the Exhibit Hall to discuss your day of education and talk to exhibitors while enjoying a beverage and snacks.

ENTERTAINMENT

WATER AND THE HISTORY OF BEER DINNER

(ticketed event – additional fee applies)

Beginning at 5:30 PM, take a walk through the chemistry and history of beer while tasting various Michigan microbrews and wines, and enjoying the culinary tastes of Michigan.

A limited number of tickets for ticketed events may be available onsite. Inquire at the Registration Desk for availability.



General Information

CONFERENCE REGISTRATION RATES

Full conference attendees will receive access to all general and technical sessions, all refreshment breaks, Tuesday night Opening Reception in the Exhibit Hall, the Exhibit Hall during exhibit hours, and Wednesday evening Happy Hour in the Exhibit Hall. Regular registration is \$490 for non-members with a discount for early registration and an additional discount for members. **The earlier you register, the more you save.**

One-day conference attendees will receive access to all general and technical sessions and refreshment breaks on the day of their choosing. Wednesday attendees also have access to the Exhibit Hall during exhibit hours and the Wednesday evening Happy Hour in the Exhibit Hall. Regular registration is \$290 for non-members with a discount for early registration and an additional discount for members.

If you have **dietary or ADA requirements**, please make your request known when you register for the conference.

The Section has an ongoing **commitment to support the active involvement of young professionals, retirees and those from small systems** serving a population of fewer than 3,300. If you are in one of these groups, you are eligible for a substantial discount on full conference registration.

Young Professionals (under 35 years old or been in the industry for five years or less) who have never attended the Michigan Section's Annual Conference & Exhibits are eligible to have their registration fee waived. Please contact Matt Parks, Young Professionals Committee Chair, for more information at (734) 222-3333 or matt.parks@ohm-advisors.com.

See the Conference Registration form for details on the discount available for **retirees who are AWWA members** and professionals from **very small systems**.

As a small token of our appreciation, speakers are also eligible for a discount. **Speakers** should have received instructions with their speaker confirmation letter. If you have questions, please contact Section staff.

Social Companions/Spouses must be registered to enter any function of the Conference. Registered guests have access to all functions listed for full conference attendees except general and technical sessions. You may purchase tickets to ticketed events in advance for your guest during the registration process. A limited number of tickets for ticketed events may be available onsite. Inquire at the registration desk.

Each **exhibit booth registration** includes exhibitor registration for two individuals. This registration includes full access to the Exhibit Hall during set-up, exhibit hours, and tear down as well as access to Wednesday general sessions and refreshment breaks. You may upgrade your booth registration to include one full conference registration. Each booth is limited to two individuals staffing the booth. All other individuals must register for the conference.

CONTINUING EDUCATION CREDITS

Individuals holding DEQ drinking water certification will be eligible for up to 1.3 CECs of approved credit in the categories as indicated in the technical



TREAT. TRANSPORT. TASTE.



AVAILABLE CECS BY DAY, INCLUDING EXHIBIT HALL ACTIVITIES

Day	technical category	managerial category	other category
Wednesday	0.2	0.2	0.1
Thursday	0.5	0.3	
Friday	0.2	0.1	

Represents available CECS in that category. Because some sessions are concurrent, this does not represent the total an attendee will receive. A maximum of 1.3 CECS is achievable within the constraints of the schedule. Attendees must be present from the beginning of a session to its conclusion in order to earn the applicable CECS for that session. Total CECS in each category are rounded down to the nearest tenth.

schedule. As a reminder, technical and managerial credits count the same toward meeting the requirements for renewal. This allows you to attend sessions based on your interest.

An additional 0.1 CEC in the “other” category may be obtained when attending the exhibits on Wednesday. CECS for Exhibit Hall Training Sessions are also available. Each session has been approved for 0.05 CECS but you must attend at least two in order to earn credit.

Licensed Professional Engineers (PEs) will be eligible for up to 13 professional development hours. These credits will be applied to your professional development journal on the Section website. Instructions for obtaining a transcript of credits earned will be available in your registration packet.

ACCOMMODATIONS

MI-AWWA has made arrangements for sleeping rooms at the Boyne Highlands for the 2016 MI-AWWA Annual Conference and Exhibits, September 12 – 16, 2016. Discounted rates are available for the variety of accommodations available at Boyne Highlands.

Bartley..... \$77/night*
 Main Lodge \$81 - \$108/night*
 Inverness.....\$112 - \$129/night*
 Pleasant View

Lofts and Suites..... \$148 - \$177/night*
 *not including taxes and other fees

Make your reservations on line before August 15, 2016 **online and use code 107519** to access the discounted rates.

Or call (800) 462-6963 and ask for the Michigan Section - American Water Works Association to book your reservations.

Discounted rates are based on availability. Rates are available until August 15, 2016 or until the block fills, whichever comes first. If you have any special lodging requirements, please make your request when you are making your reservation. Please make your reservations early.

About the area

The Harbor Springs area is a year ‘round destination with activities galore. Welcoming visitors since the late 1800s, visitors come to Harbor Springs because this spectacular location on Little Traverse Bay provides a glorious setting as well as many recreational opportunities.

The downtown business district hugs the water. The many shops and restaurants are sure to delight. And fall offers spectacular fall foliage and nowhere is that more spectacular than the Tunnel of Trees drive along M-119 that begins in Harbor Springs.

A beautiful setting for MI-ACE 2016 with plenty to keep guests busy as well.

TICKETED EVENTS

Advance registration is required for ticketed events to ensure space availability.

MI-AWWA Annual Golf Outing – a fun golf scramble to raise money for Safe

Water in Ecuador projects and the One AWWA Operator Scholarship.

Annual Awards Lunch – an opportunity to recognize water professionals for outstanding service to the water sector, including the Raymond J. Faust Award, milestone anniversaries, and other recognition.

George W. Fuller Luncheon – a time-honored tradition of announcing this year’s Michigan Fuller Awardee, which is secret until revealed at this event. This is also the transition of Board members.

Water and the History of Beer Dinner – a fun evening of local brews, local wines, regional foods, and an opportunity to learn why water quality is so important to producing great beer.

Please secure your tickets when registering for the Conference. A limited number of tickets for each event may be available on-site. Please inquire at the registration desk.

CONFERENCE CANCELLATION POLICY

Substitutions – If you are not able to attend, substitutes are encouraged. Please email the name of the substitute to ejohnson@mi-water.org. Rates are based on membership, so additional fees may apply.

Cancellations – If a substitute is not available to attend in your place, please notify MI-AWWA in writing by sending an email to ejohnson@mi-water.org or faxing notice of cancellation to (517) 292-2912 attention Eric Johnson.

1. If cancelled by 4:00 PM on Aug 12, 2016, you will receive a full refund less a \$35 processing fee.
2. If cancelled after 4:00 PM on Aug 12, 2016, but prior to 4pm on September 4, 2016 you will receive 50% of the registration fee paid. There is no refund for purchased meals or special activities.
3. If cancelled after 4:00 PM on September 4, 2016, or if you are a no-show, there will be no refund.

Exhibitor Prospectus

Partner with MI-AWWA to reach your audience at this year's 78th Annual Conference. Join water sector leaders, buyers and practitioners from the State of Michigan who will come together for two and one-half days of peer-to-peer continuing education and networking opportunities.

SHOW HOURS

Tuesday, September 13th
from 6:30 PM – 8:00 PM

- Welcome Reception in the Exhibit Hall.

Wednesday, September 14th from
10:00 AM until 6:30 PM

- Opening General Sessions concludes at 10:00 AM; conference attendees will move to the Exhibit Area for a mid-morning refreshment break
- Exhibits will close for the Awards Luncheon; 11:30 AM – 1:30 PM
- CEC's for certified drinking water operators on the ½ hour; 1:30 PM – 3:30 PM at four selected and approved exhibit booths
- Safe Water in Ecuador Chance Auction begins at the opening of the exhibits. We need auction items! Examples of items donated in the past include; gift cards or baskets, tools, outdoor items, event tickets and sports memorabilia. Will your firm participate? Contact Jessica Howard at (734) 466-4587 or Jessica.Howard@ohm-advisors.com for more info.
- Drinking Water Taste- Off – Five MI-AWWA Regional Meeting Winners compete for the top prize – "Best Tasting Water in Michigan"
- Conference Attendee Reception from 4:30 PM until 6:00 PM in the Exhibit Area

EXHIBIT HALL PRESENTATIONS

There are four opportunities to provide a 30-minute educational presentation to conference attendees. If you are interested in presenting,

please submit a brief description of the presentation to Manufacturer's Advisory Committee Chair Ira Gabin at ira.gabin@dixonengineering.net.

CONFERENCE SPONSORSHIPS

Maximize your presence at the Conference through sponsorship support. There are a number of opportunities including three conference sponsorship levels, break sponsorships, and golf sponsorships.

BILLBOARD ADS

Raise your profile even more during the Conference by purchasing a slide on the Billboard reel that displays during show hours. An exhibitor may acquire up to three slides.

SWIE CHANCE AUCTION

Safe Water in Ecuador will hold a Chance Auction again this year and is looking for items. Donate an item or themed basket. You can display it in the main Auction area or in your own booth. Please contact Jessica Howard

at (734) 547-4576 or jessica.howard@ohm-advisors.com for more information.

RULES AND REGULATIONS

Exhibitor Move-In and Booth Set-up

Tuesday, September 13th:
7:30 AM – 6:00 PM

An exhibit booth is 8' by 10' and includes a 6'x 30" covered and (blue) skirted table, 2 chairs, 1 wastebasket, pipe/drape on sides and back and access to 110v electrical. Exhibit booth draping will be (blue and white) 8' high back and 3' high sides. Exhibitors must bring grounded extension cords, approximately 20' in length to access electrical outlets.

- All exhibits must be contained within the confines of the booth space. Tables, displays, chairs, etc. may not be outside of the booth. Displays along the back of the space may be no higher than 8' tall nor higher than 3' on the side of the booth.
- All exhibits must be set up by 6:00 PM on Tuesday, September 13.
- Exhibitors must conform to local ordinances and regulations and to the

PRICE

Save by registering for your booth early. Space is limited, so register early to avoid not being represented.

	5/2-6/30 Early Bird		7/1-8/12 Regular		Onsite	
	Member	Non-Member	Member	Non-Member	Member	Non-Member
Exhibit Booth	\$ 550	\$ 550	\$ 575	\$ 575	\$ 650	\$ 650
Exhibit Booth with Conference Registration	\$ 675	\$ 775	\$ 700	\$ 800	\$ 775	\$ 875

Price includes one 8' x 10' exhibit booth with one 6'x 30" covered and skirted table, 2 chairs, 1 wastebasket, pipe/drape on sides and back and access to 110v electrical, and 2 exhibitor-only badges. You can save by getting the booth/conference registration package, which includes one exhibit booth plus full conference registration for one by purchasing an Exhibit Booth with Conference Registration. Conference registration includes the opportunity to attend education sessions, networking refreshment breaks and receptions. Golf, ticketed luncheons and ticketed evening special event are available at an additional price.

TREAT. TRANSPORT. TASTE.



policies of the venue. All items must be secured when the booth is not attended. Contents of the booth are the sole responsibility of the exhibitor. No security is provided. The Section is not responsible for theft, loss, or any other damage incurred during move in, while exhibiting, or during move out.

- Exhibitors must occupy the booth assigned to them and may not substitute or swap booth space without prior consent of the Section.
- It is Section policy that only Section staff, the contracted show

decorator, and paid exhibitors are allowed on the exhibitor floor during set up and tear down. Anyone on the floor must be showing identification badges at all times.

Booth Teardown and Exhibitor Move-Out

Wednesday, September 14th:
6:30 – 10:00 PM.

- No exhibitor may remove any part of their exhibit prior to the close of the reception at 6:30 PM. Exhibits must be completely removed no later than 10:00 PM.

FOR MORE INFORMATION, CONTACT:

Eric Johnson at (517) 292-2912, extension 2, or via email at ejohnson@mi-water.org or Bonnifer Ballard at (517) 292-2912, extension 1 or via email at bballard@mi-water.org.

Don't delay! Space is limited!

NEW - Earn points for Joint Expo booth assignment when you exhibit or sponsor. See Joint Expo page online for details.

Sponsorship Opportunities

Show your commitment to the water sector and have your company recognized before, during, and after the Section's Annual Conference & Exhibits.

BILLBOARD AD

You have the opportunity to promote your products and services with the PowerPoint Billboard displayed in the exhibit hall. This "Billboard" is a PowerPoint file that loops, playing continuously during exhibit hours. Your slide can describe a new product or service, or simply describe your firm. This added exposure is sure to generate increased interest by conference attendees.

One slide.....\$150
(maximum three slides per firm)

CONFERENCE SPONSORSHIP

There are different levels of sponsorship to help you increase your visibility leading up to, during, and after the conference.

Gold \$1,500
Benefits include:

- Recognition in pre-conference promotional materials
- Logo on website

- Logo in conference materials
- Recognition in the conference pre-session slides
- Logo in Fall issue of *Water Works News*

Silver..... \$1,000
Benefits include:

- Name on website
- Name in conference materials
- Recognition in the conference pre-session slides
- Logo in Fall issue of *Water Works News*

Bronze \$500
Benefits include:

- Name on website
- Name in conference materials
- Recognition in the conference pre-session slides
- Name in Fall issue of *Water Works News*

ANNUAL GOLF OUTING

The Annual Golf Outing offers a great opportunity to spend time with customers and potential customers while helping to raise money for Safe Water in Ecuador and the new One AWWA Operator Scholarship for operators seeking additional education and training.

Outing Sponsor..... \$1,000

Your company logo along with up to two other sponsors displayed in the Lunch area

Hole Sponsor..... \$250
Proceeds dedicated to SWIE

Your company logo on a sign at the tee box

Putting Green Sponsor..... \$500

Your company logo on a sign at the putting green

Picnic Lunch Sponsors (three available)..... \$250

Your company logo along with up to two other sponsors displayed in the Lunch area

Goody Bag Sponsor... \$250 + the item

Your company name on a sign at registration and the opportunity to provide a logo'd item for the golfer goody bag.

Beverage Cart Sponsor..... SOLD
Proceeds dedicated to SWIE

Sponsored by Dixon Engineering

MI-ACE 2016 Registration

Primary Contact (first and last name): _____
 Organization: _____
 Address: _____
 City: _____ State: _____ Zip: _____
 Phone: _____ Email: _____
 AWWA Member #: _____
 I am bringing a social companion/spouse. \$50 (before 7/1) \$75 (7/1-8/12) \$100 (after 8/12)
 Companion/Spouse Name: _____

REGISTRATION TYPE

Conference Attendee	5/2-6/30 Early Bird		7/1-8/12 Regular		Onsite	
	Member	Non-Member	Member	Non-Member	Member	Non-Member
Full Conference	\$ 350	\$ 440	\$ 375	\$ 465	\$ 400	\$ 490
One Day Only	\$ 150	\$ 240	\$ 175	\$ 265	\$ 200	\$ 290
<input type="checkbox"/> Wednesday <input type="checkbox"/> Thursday <input type="checkbox"/> Friday						
Retiree*	125	N/A	150	N/A	175	N/A

*rate available for AWWA members only

- I am from a small system, eligible to receive \$100 off the Full Conference fee.
 I am Speaker, eligible to receive up to \$175 off Full Conference fee.

Attendee Total \$ _____
including companion

Exhibitor	5/2-6/30 Early Bird		7/1-8/12 Regular		Onsite	
	Member	Non-Member	Member	Non-Member	Member	Non-Member
Exhibit	\$550	\$ 550	\$ 575	\$ 575	\$ 650	\$ 650
Exhibit with Conference Reg.	\$ 675	\$ 775	\$ 700	\$ 800	\$ 775	\$ 875

Exhibitor Total \$ _____

Please provide the names of the two individuals who will be working the booth on Wednesday:

2nd Exhibitor Attendee Name: _____ Email: _____

Conference Activities

	Conference Attendee	Companion	Exhibitor 1	Exhibitor 2
Opening Reception (Tue, complimentary)	<input type="checkbox"/>	<input type="checkbox"/>	<input type="checkbox"/>	<input type="checkbox"/>
YP and First Time Attendee Breakfast (Wed, complimentary)	<input type="checkbox"/>	<input type="checkbox"/>	<input type="checkbox"/>	<input type="checkbox"/>
Women on Water Mixer (Wed, complimentary)	<input type="checkbox"/>	<input type="checkbox"/>	<input type="checkbox"/>	<input type="checkbox"/>
Annual Awards Lunch (Wed, \$25)	\$	\$	\$	\$
Happy Hour (Wed, complimentary)	<input type="checkbox"/>	<input type="checkbox"/>	<input type="checkbox"/>	<input type="checkbox"/>
Annual Business Meeting (Thu, members encouraged to attend)	<input type="checkbox"/>	<input type="checkbox"/>	<input type="checkbox"/>	<input type="checkbox"/>
George W. Fuller Luncheon (Wed, \$35) <input type="checkbox"/> Meat <input type="checkbox"/> Fish <input type="checkbox"/> Vegan	\$	\$	\$	\$
Water and the History of Beer Dinner (Thu, \$45)	\$	\$	\$	\$

Conference Activities Total \$ _____

Grand Total Due \$ _____

Please tell us about any special restrictions or accommodations you require.

Payment Options

Payments must be received by the date indicated for the registration fee.

- Check # enclosed
 Credit Card

Card #: _____ Exp. Date: _____ CVV: _____

Name on card: _____ Signature: _____

Address: _____

City: _____ State: _____ Zip: _____

Please complete this form and send with payment to: MI-AWWA Payment Processing Dept 6091 PO Box 30516 Lansing, MI 48909-8016 Fax (517) 292-2912
 You may also register online at www.mi-water.org. Cancellation policy is posted online. For questions, please contact Eric Johnson at ejohnson@mi-water.org.

** Mailed registrations must be received at least one week prior to the date of the conference.

TREAT. TRANSPORT. TASTE.

Annual Golf Outing Registration

Name: _____
 Organization: _____
 Address: _____
 City: _____ State: _____ Zip: _____
 Work Phone: _____ Cell: _____
 Email: _____

You will be combined with other golfers to create a foursome. If there are other single golfers with whom you would like to golf, please indicate their names below. We will do our best to accommodate your request.

2nd Golfer Name: _____ I want to pay for this golfer.
 3rd Golfer Name: _____ I want to pay for this golfer.
 4th Golfer Name: _____ I want to pay for this golfer.

REGISTRATION FEE

Golfer \$75 x # of golfers _____ = _____ **Golfer Total \$** _____

SPONSORSHIPS

Golf Outing Sponsor (\$1,000)..... _____
 Golf Outing Hole Sponsor (\$250)..... _____
 Golf Outing Goody Bag Sponsor (an item plus \$250)..... _____
 Golf Outing Lunch Sponsor (one of three available, \$250)..... _____
 Golf Outing Putting Green Sponsor (exclusive, \$500)..... _____

Sponsorship Total \$ _____

Grand Total Due \$ _____

Please tell us about any special restrictions or accommodations you require.

PAYMENT OPTIONS

Payments must be received by the date indicated for the registration fee.

- Check # enclosed
- Credit Card

Card #: _____ Exp. Date: _____ CVV: _____
 Name on card: _____ Signature: _____
 Address: _____
 City: _____ State: _____ Zip: _____

Please complete this form and send with payment to:
 MI-AWWA Payment Processing
 Dept 6091 PO Box 30516 Lansing, MI
 48909-8016**
 Fax 517-292-2912

You may also register online at www.mi-water.org. Cancellation policy is posted online. For questions, please contact Eric Johnson at ejohnson@mi-water.org. ** Mailed registrations must be received at least one week prior to the date of the Outing.

Preliminary Exhibitor List

American Water Resources
Dixon Engineering, Inc.
EJ
Fer-Pal Construction
Fishbeck, Thompson, Carr & Huber, Inc.
Ford Meter Box
Hydrocorp
Kennedy Industries
Mead & Hunt
Michigan Dept of Health and Human Services
Northern Pump & Well
Paragon Laboratories
Peerless-Midwest, Inc.
Uni-Bell PVC Pipe Association

Gold Sponsor



AMERICAN WATER RESOURCES®

Service Line Protection Programs for Homeowners



**GOING TO GREAT LENGTHS
TO DELIVER
GREAT
PIPE.**

The Great Lakes is now home to AMERICAN SpiralWeld's newest division. That means we're closer than ever to delivering solutions throughout the Great Lakes. Whatever the job size, in sizes up to 12 feet in diameter and thickness up to one inch, we can handle it. Built strong, built to endure, and made in America. That's The Right Way. That's the AMERICAN way.

american-usa.com/aswp

aswp@american-usa.com

EOE/Minority/Female/Veteran/Disability



AMERICAN
SPIRALWELD PIPE
THE RIGHT WAY

DUCTILE IRON PIPE

FLOW CONTROL

INTERNATIONAL

SPIRALWELD PIPE

STEEL PIPE

15th Annual AWWA Water Matters! Fly-In

By Bill Fritz



The Michigan Section was once again represented in Washington DC at this important annual event. More than 130 delegates representing 47 states descended on Capitol Hill April 13-14 to meet with our U.S. Representatives and Senators.

AWWA selects a short list of important topics (pared down from a long list) to discuss with Congress each year. It should come as no surprise that this year, lead received the most attention. We encouraged support of existing legislation such as S. 2579 (introduced by Michigan's own Senator Debbie Stabenow) and H.R. 4470. We also advocated investing in the Nation's infrastructure, a topic which has been discussed every year that I've attended. We urged support of funding the Water Infrastructure Finance and Innovation Act (WIFIA) loan program, State Revolving Loan (SRF) Program, and Private Activity Bonds.

The Michigan delegation comprised myself, Bob Veneklasen (City of Wyoming) and Molly Maciejewski (City of Ann Arbor). In a span of about eight hours (and nearly ten miles walked), we were able to meet with thirteen of Michigan's sixteen Members of Congress, including four with the actual elected official, rather than staff. They were attentive, well-versed on our topics

and best of all knowledgeable of AWWA itself and the important role that we play in protecting the public's health. AWWA's efforts on the ground over the years in Washington DC are beginning to bear fruit in that Congressional



Bob Veneklasen (City of Wyoming) and Molly Maciejewski (City of Ann Arbor) on Capitol Hill




Bob Veneklasen and Bill Fritz with Representative John Moolenaar (MI-04)

offices reach out regularly to our members for input, to offer testimony and to assist on legislation.

The topics covered annually are as varied and wide-ranging as are our jobs. In past years, to name only a few, we've covered:

- Algal Blooms
- Electronic CCR's
- Hydraulic Fracturing
- Chemical Security
- Cyber Security

More information on the activities of AWWA's Government Affairs Office is available on the AWWA website at:

www.awwa.org/legislation-regulation/leadership.aspx 



AQUASTORE®
Tanks & Domes

GLASS-FUSED-TO-STEEL TANKS

- **NO Sandblasting • NO Painting**
- Low maintenance
- Lowest life cycle cost
- Quick, on-site construction
- Expandable • Relocatable



2000 Town Center, Suite 1900, Southfield, Michigan 48075
Phone: 248-351-9773 Office: 248-351-2699
www.bluewaterstoragesystems.com



LEAD AND COPPER RULE IMPLEMENTATION UPDATE

Recent MDEQ communications to Michigan's community water supplies (CWS) have re-iterated requirements of the Lead and Copper Rule and provided additional implementation recommendations. The following is a summary of recent updates. For additional LCR information, including site selection criteria and sample collection procedures, go to www.michigan.gov/drinkingwater and click on "Information on Lead and Copper in Drinking Water."

CONFIRM MONITORING PRACTICES CONFORM TO THE LEAD AND COPPER RULE (LCR) AND ASSOCIATED GUIDANCE.

Review and update your distribution system materials inventory to ensure accuracy. Use this inventory to confirm your lead and copper sampling pool consists of sites meeting required site selection criteria. Sampling locations should be the same as previous monitoring unless they no longer meet the selection criteria. Thoroughly document any changes to your sampling pool.

Incorporate updated sampling collection procedures into future monitoring. Procedures no longer include "pre-stagnation flushing" the day prior to sample collection and now require use of wide-mouth sample bottles. Instruct residents on proper collection techniques and take steps to protect the sample's chain-of-custody. *If you suspect a sample was not collected properly, discard the sample and ask the resident to collect another sample using the correct procedure.*

INFORM AND ASSIST THE PUBLIC

Consumer Notice of Lead Results: Deliver lead results and required consumer notice language to residents of sampled sites as soon as possible, but no later than 30 days after receiving the results. MDEQ highly recommends responding more quickly and providing additional assistance to homes exceeding an action level.

Public Education: In the event of a lead action level exceedance, ensure public education materials are widely distributed throughout the community as quickly as possible and consult the MDEQ on regulatory requirements.

CCR: Report lead and copper information in your annual Consumer Confidence Report. This includes 90th percentile values of the most recent round of sampling, the number of sites exceeding the action level, and required health effects language.

MDEQ urges water supplies to proactively provide lead and copper educational information to consumers and to increase transparency in all matters regarding lead and copper in drinking water.

AVOID PARTIAL LEAD SERVICE LINE REPLACEMENT

Avoid partial lead service line replacements that leave any portion of lead line in place, including lead "goosenecks." A gooseneck, or pigtail, is the publically-owned portion of the service line between the water main and either a connector line or the curb box. Partial lead service line replacements may result in elevated lead levels in drinking water.

ADDRESS IMPACTS OF CONSTRUCTION ACTIVITY

Recent research has indicated that vibrations from construction activity can cause particulate lead to dislodge from service lines and temporarily contribute to elevated lead levels in drinking water. Prior to undertaking construction activity in an area with lead service lines, contact all potentially affected residents and provide them with information that will help reduce their risk. MDEQ has developed a brochure (available online) that advises potentially impacted residents of steps they can take to minimize exposure to lead. After construction activities are complete and preventative measures have been taken, consider offering to test residents' drinking water for lead to ensure that the risk has been abated. This advice applies to both lead service lines and galvanized service lines that have a lead gooseneck or pigtail.

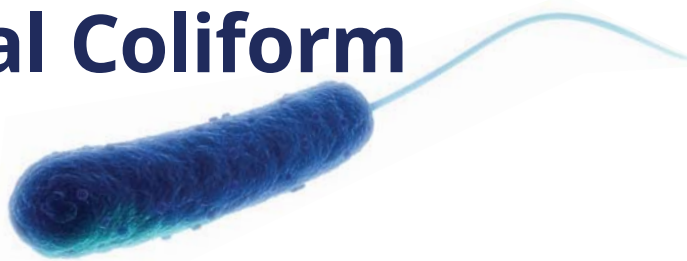
DEVELOP A PLAN

The MDEQ encourages CWS to engage their customers in a solution to eliminate both customer-owned and supply-owned portions of remaining lead service lines. While this may be a significant challenge for many communities, consider the following possible methods to assist in this effort:

- Pursue ordinances or other legal authorities to access and modify customer-owned portions of the distribution system.
- Explore availability of Drinking Water Revolving Fund loans for lead service line replacements.
- Provide low interest loans or other incentives for residents to replace their portion of lead service lines. 💧

The Revised Total Coliform Rule is in Effect

By Kris Phillip



Requirements of the Revised Total Coliform Rule (RTCR) took effect April 1, 2016, for all Michigan Public Water Supplies. The intent of the RTCR is to increase public health protection by monitoring for the presence of microbial contamination and requiring water supplies that are vulnerable to contamination to find and fix problems. Below is a summary of notable RTCR requirements for community water supplies (CWS).

MONITORING

Sample Siting Plan (SSP): As with the previous Total Coliform Rule, all CWS must sample in accordance with a SSP which has been approved by the Michigan Department of Environmental Quality (MDEQ). An SSP describes the number of samples required each month and the location of routine and repeat sample sites.

Routine & Repeat Monitoring: Routine total coliform monitoring remains unchanged for Michigan CWS under the RTCR. CWS will continue to sample monthly and collect the same number of samples previously required (based on population served). For each total coliform positive result, a CWS must collect three repeat samples.

Triggered Source Monitoring: For groundwater supplies, the requirement to collect an *E. coli* sample from each well for each routine positive sample remains in effect.

Positive Samples: All total coliform positive samples must be analyzed for *E. coli*. If you have been using a laboratory that tests for fecal bacteria rather than *E. coli*, you need to make sure the lab understands the new requirement, and tests accordingly. Fecal bacteria results are no longer accepted for compliance purposes.

TREATMENT TECHNIQUE

Total Coliform (TC): There is no longer a Maximum Contaminant Level (MCL) for TC. Instead, if TC is verified through repeat monitoring and none of the samples are positive for *E. coli*, an assessment must be conducted, and sanitary defects must be identified and corrected. Assessments are discussed further below.

MCL

E. coli MCL: The MCL for *E. coli* is an ACUTE condition requiring 24-hour public notification (including boil water advisory), a Level 2 Assessment, and potential corrective action. The following situations result in an acute *E. coli* MCL violation:

- TC+ routine sample, followed by an EC+ repeat sample
- EC+ routine sample, followed by a TC+ repeat sample
- EC+ routine sample, followed by an EC+ repeat sample
- Failure to collect ALL repeat samples following an EC+ routine sample

- Failure to run an *E. coli* analysis on a TC+ repeat sample (TC+ = total coliform positive; EC+ = *E. coli* positive)

TREATMENT TECHNIQUE TRIGGERS

The RTCR requires CWS that have an indication of TC or *E. coli* contamination to assess the problem and take corrective action. There are two levels of assessments, based on the severity or frequency of the problem; however, both are designed to “find and fix” conditions that might indicate a vulnerability to contamination. Assessments must be completed and submitted to the MDEQ as soon as possible, but no later than 30 days after notification.

Level 1 Assessment Triggers: Level 1 Assessments may be completed by a certified operator in charge, or another individual sufficiently familiar with the water supply. A Level 1 Assessment is triggered if any of the following occur:

- >5.0% of routine and repeat samples in a month are TC+ in a supply that collects 40 or more samples per month
- Two (2) or more routine and repeat samples in a month are TC+ in a supply that collects less than 40 samples per month
- Failure to collect **ALL** repeat samples following an TC+ routine sample

The Level 1 Assessment form is available on the MDEQ website at www.michigan.gov/drinkingwater. Click on Community Water Supply Home Page, then Reporting Forms. For assistance completing an assessment, contact your MDEQ district engineer or analyst.

Level 2 Assessment Triggers: Level 2 Assessments will be conducted by MDEQ staff. A Level 2 Assessment is triggered if any of the following occur:

- An *E. coli* MCL violation
- A second Level 1 trigger occurs within a rolling 12 month period
- MDEQ determines a Level 2 Assessment is appropriate

Correction of Sanitary Defects: If sanitary defects are identified during a Level 1 or 2 Assessment, the water supply must correct the defect(s) within 30 days of notification or by an approved alternate date proposed in the assessment form.

REPORTING AND RECORDKEEPING

Sample results, completed assessments, and other required information must be reported to the MDEQ by appropriate deadlines. Water supplies must retain copies of all documents in accordance with record retention requirements. 💧

YP Summit 2016



The warm, sunny weather in San Diego at this year's AWWA/WEF Young Professional (YP) Summit and Chair Training was an enlightening experience where the spirit of unity among the water industry's newest professionals could shine. The importance of unity and the direction we need to go was made abundantly clear by the value of the information from the presenters. The water industry's leading luminaries like David LaFrance, CEO of AWWA; Paul Bowen President of WEF, and Gene Koontz President of AWWA, chose to take time from their busy schedules to present important information to the Young Professionals attending the conference. After their presentations were delivered, they stayed and got to know as many of the YP's as they could, even taking pictures and having meaningful conversations with us. We were encouraged to perfect our "elevator speech," which is the ability to quickly tell a stranger who we are, what we do, and why we do it. As I networked with other Young Professionals I found many similarities that united us and left me with the impression that the reason we work in the water industry is not only our strongest bond, but it can elevate each of us to leadership roles in our career in the water industry.

AWWA President Gene Koontz welcomed us to San Diego at the YP Chair Training by discussing how his 34 years of experience as an active member of AWWA lifted him to a leadership role in the Association and how those experiences; combined with hard work made him better in his career. The most important point made by Gene was to stay involved with our associations by bringing together fresh ideas that will give each of us the potential to brighten the future of our success in our own careers. His encouraging words assured us that our way is shown to us in our personal growth; our colleagues will be by our side helping to light the path. The structure of how the AWWA standards work was highlighted by Meredith Quinn, AWWA YP Committee Chair, who then introduced David Wilkes, AWWA Standards Council Chair from the Georgia section. David described his move from one side



of the continental US to the other, and how his love of volunteering for the Association kept him involved while his career moved him from one place to another. David's presentation coupled with Genes' comments, made it clear that standing shoulder to shoulder with our water industry colleagues while ascending towards a united future, where the brightest minds solve the world's problems is the most important industry standard to which we must adhere.

Furthering the idea of unity were YP leaders like Tyler Tedcastle, YP Committee Member from the Florida section and Ashley Lessig from the Rocky Mountain section, who spoke about ways to "flush YP's out of the woodwork" during breakout sessions where we worked as groups. These sessions led to brilliant idea exchanges about events that other sections use to get YP's involved that we can carry back to our respective sections for implementation.

Rounding out the YP Section Chair Training was David LaFrance, AWWA CEO who spoke about the tragic events of Flint, MI where high lead concentrations were found in municipal water due to corroding pipes. His tone was one of perseverance where in the midst of this dark hour we become the ray of light that people look to for answers. "Every challenge is an opportunity." He remarked as he urged us to share our passions for providing safe drinking water.

The Brilliance of Unity

By Ben Anderson



In doing so, we will find that we are not alone in our effort and when events like what happened in Flint occur; our reaction to those problems is our golden moment when our passions are on full display for the world. As we lead the way toward solutions for problems that arise, we can help create a better world through better water.

On the day of the Summit, the message of uniting the world of water was brought full circle in presentations given by Jim Herberg, General Manager, Orange County Sanitation District and Michael Markus, General Manager, Orange County Water District. In their presentation: Cost Effectiveness through Collaboration, they talked about how Southern California's Water and Wastewater agencies formed a one-water partnership that ultimately led to billions of dollars in capital improvements for their district. This alliance teaches us that joining forces will allow us to thrive in the water industry now and in the future.

In his presentation titled: Challenges of Advancing Potable Reuse, Lessons Learned in Pure Water San Diego, Jim Helminski, Assistant Director of Public Utilities, City of San Diego, described the challenges of communicating to the public that there is only one water globally. The idea of uniting the world of water doesn't end with the people in the water industry because it is not only for our benefit. Our purpose is to provide safe drinking water to all people so they can trust that we are competent and diligent. We must reach out to the public in an honest way to deliver a persistent, consistent message that does not come from an outside source, but directly from the workers doing the job.

As the California sun sets on the 2016 YP Summit event, Rocky Craley and Alvin Pilobello, both serving as AWWA/WEF YP Summit Team Co-Chairs closing remarks reminded us that as we ride the elevator to the sunlight of our success in the



water industry, we will need to use our collective experience and knowledge to be the shining examples of what the water industry has to offer. By not being afraid to be whom we are, and letting our little lights shine, we prove to people how important providing safe water is and when we unite our little lights the radiance of the brilliant blaze creates cascades over the rest of the world. 💧



United Systems



CIS Software
AMR / AMI
Water Loss
Remote Shutoff Valve



Call Toll-free Today (800) 455-3293
Web: www.united-systems.com

Steve Flaherty - Territory Manager
Email: stevef@united-systems.com
Mobile: (260) 515-3800



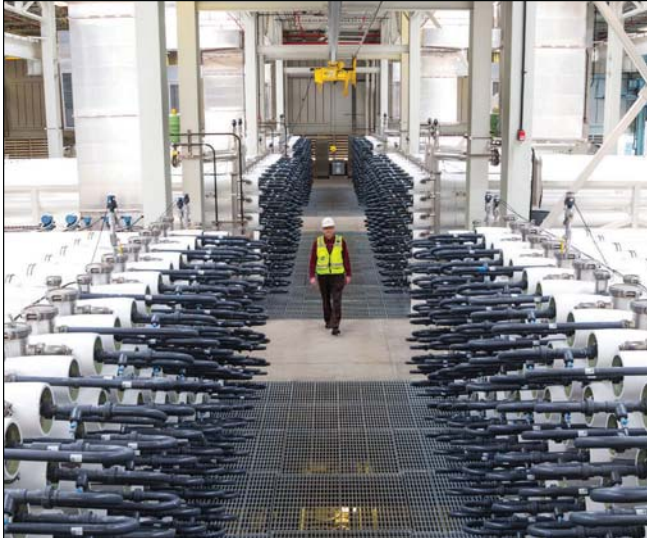
MEET KYLE TRYAN

By: Ben Anderson

The people of MI-AWWA are the heart and soul of what make our Association successful. To strengthen our goal of learning how we can provide better water to people, we volunteer our time as often as we can to work toward that goal. We come together to share our knowledge and experiences to help one another, not only for the mission of the section, but to help each of us grow in our professional lives as well. Though we all share the same passion for safe water, we are a diverse group of people with different backgrounds, who took different paths that lead us to the place where we all come together for our common goal.



Kyle Tryan is the 27 year old Water Treatment Plant Superintendent at Benton Charter Township. Kyle grew up in beautiful Escanaba, MI where he attended Escanaba Senior High School. Before attending Bay de Noc Community College, where he received and Associates Degree in Applied Science in Water and Wastewater Treatment. Kyle held a few different jobs. Those jobs ranged from working on an asparagus farm picking, cleaning, and bundling asparagus to working in a printing factory.



IF THE CHALLENGE INVOLVES WATER, WE'RE UP FOR IT.

We offer you a world of expertise, with value for today and foresight for tomorrow, for all your unique water challenges.

Grand Rapids 616-459-2360
Ann Arbor 734-665-1000
Bingham Farms 248-594-9330

Visit bv.com to learn more.



THE AWWA PREDICTS A SHORTAGE OF OPERATORS IN THE NEXT 5 TO 10 YEARS AND I WOULD LIKE TO SEE PEOPLE STEP UP AND FILL THOSE ROLES.

Having had relatives that work in water and wastewater, Kyle was encouraged to pursue a career in the water industry. Bay de Noc being next door to his home certainly helped with his decision also, but during his time at Bay de Noc, he was inspired by his teacher's passion for providing safe water and the many rewards that come along with a water industry career.

After getting as much as he could from his time at Bay de Noc, Kyle's desires turned to becoming a professional water system operator. He worked hard to level up his water licenses before being offered his first water industry job at Benton Charter Township just three months after graduation. When the newly built water treatment facility he was working at needed a qualified Superintendent, Kyle's hard work and determination had paid off and he was promoted. While he knows there is a lot of responsibility being in charge of a water treatment facility, keeping customers supplied with safe, great tasting water is rewarding.

One of the struggles for MI-AWWA is being able to get operators involved. Operators are a key component to achieving the goals of providing water to people. Having attended conferences and meeting many of the members of MI-AWWA, Kyle is inspired to get more involved with the section. Kyle hopes to encourage more people to pursue a career in the water industry, "The AWWA predicts a shortage of operators in the next 5 to 10 years and I would like to see people step up and fill those roles." Being an operator and a member of MI-AWWA provides the necessary network that helps them communicate their perspective of water systems and also gives them a chance to learn more about other aspects of the water industry.

There are different titles and job positions across the many water utilities in Michigan. While there are many differences between us that are worth celebrating, the similarities that unite us are the driving force that moves us forward. Whether you're an engineer, operator or chemist; just to name a few, the work you do for the water industry is invaluable. Getting to know one another is an opportunity to expand your network and a chance to be inspired by someone who might help you make a difference. 💧



IN MEMORY OF CLIFTON C. ALBERS

October 14, 1922 - March 27, 2016 (age 93)



Clifton C. Albers, age 93 of Grand Haven passed away Sunday, March 27, 2016. Clif was born October 14, 1922. Clif proudly served in the US Coast Guard from 1942-1946, serving in N. Africa, Sicily, Normandy, Belgium and China during World War II. Clif worked for the City of Grand Haven as Superintendent of the Water Treatment Plant for 30 years. During his time there he saw the construction of the Musical Fountain and its upgrades and the construction of the new filtration plant. Although his water career started in Muskegon, he worked with

many individuals in the Michigan Water Works Field and the American Water Works Association. He participated at the state level in laying out the foundation for education, training and the certification program for the states program for water filtration. Clif has many honorary awards for his service. The Edward Dunbar Rich Service Award for 25 years of service, Operators' Meritorious Service Award, Raymond J. Faust Award and one of the highest achievement awards is the AWWA George Warren Fuller Award. Clif was dedicated to the Michigan AWWA Section and to the City of Grand Haven.

IN MEMORY OF ERIC WESTRA



Eric Westra, 29 of Grand Rapids, MI passed away on May 23, 2016. Eric was a project engineer at URS (now called AECOM) before joining Prein & Newhof, for whom he worked two years. He was

experienced in municipal engineering, managing water system improvements. Eric was known for his friendly demeanor and unending patience, and he will be remembered as a devoted engineer, husband and father. 💧



Badger Meter | Clearly Better.



Mark Wright
Account Manager
800-876-3837 Ext. 16540
mwright@badgermeter.com
www.badgermeter.com

BEACON[®]
Advanced Metering Analytics

Success Stories Created Here

Success stories are what we create for you, your municipalities and your projects. We do it by using our local experience and knowledge to speed the process and smooth the challenges. We are the partner that knows “what to do”, and “when to do it”—even before you ask. Our inventory is second to none, so your products are always available when you need them.

“So, let’s get started on your next success story!”

MICHIGAN BRANCHES

CANTON

4901 Dewitt Road
734-398-5950

GRAND RAPIDS

4530 36th Street SE
616-222-9500

SHELBY TOWNSHIP

6575 23 Mile Rd.
586-323-8800



Local Knowledge
Local Experience
Local Service, Nationwide®

HD SUPPLY
WATERWORKS

www.hdswaterworks.com

24 Hour Emergency Service
Online Services

AECOM

Clean water, local resources

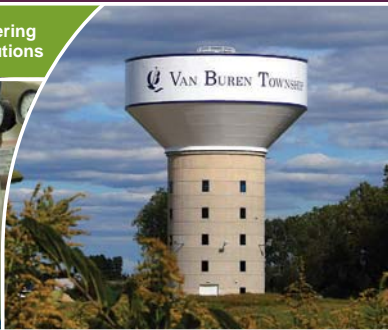
AECOM is uniquely positioned to deliver fully integrated services spanning the entire lifecycle of your water, wastewater and stormwater projects.



Detroit • Grand Rapids • Marquette • Southfield • Traverse City

T: 1.231.922.4301
aecom.com

Trusted professionals delivering
America's infrastructure solutions



WADETRIM

Engineering | Asset Management | Operations Services
800.482.2864 | www.wadetrim.com



KEI

Controls, LLC

Industrial Sales

Industrial Controls,
Instrumentation,
SCADA / IT System
Design, Installation,
Programming, Setup,
Training, Consulting,
Sales, Service,
Networking,
Website Design
and more!

Electrical, Electronic,
Automation, Motion,
Controls, Mechanical,
Power and Panel build
to include AC/DC
Drives and Motors,
Motor Control Center,
Transformers, Belts,
Bearings, Gears
and more!

Brian D. Bodary Jr.
989-751-7624
Bbodary.kei@gmail.com

FALL REGIONAL MEETINGS

Licensed Professional Engineers as well as Certified Drinking Water Operators need continuing education. The Section helps make getting those needed training hours easier by offering regional meetings in four locations across Lower Michigan. And the UP has its Fall Distribution Seminar!

The agendas for these programs are still being finalized, but you can count on interesting and relevant presentations that help get you the credits you need for renewal. Visit the Section website at www.mi-water.org.

Fall Regional Meetings

Oct 4 – Livonia
 Oct 5 – Kalamazoo
 Oct 18 – Mt. Pleasant
 Oct 19 – Gaylord
 Oct 25-26 – UP Distribution Seminar in Gladstone

Regional Meetings in Lower Michigan are one-day seminars and offer 0.5 technical CECs for attending. The UP Distribution Seminar is a 1.5 day seminar and offers 0.9 technical CECs for attending.

“NEWS FROM THE FIELD” ITEMS REQUESTED

Items are now being solicited for the next “News from the Field” program to be presented at the Michigan Section, AWWA Annual Conference in September at the Boyne Highlands Resort in Harbor Springs. Digital photographs are the preferred format. This is your opportunity to highlight your interesting and innovative water supply projects.

Providing a detailed narrative along with pictures that includes project description, contractor, costs, and benefits will (may) prevent the NFTF editors from interpreting the project as they see fit. Pictures can be submitted in .jpeg or .gif format or can be submitted in a PowerPoint presentation along with notes. Narratives can be submitted in Word or via email. Please make sure the narrative matches up and describes the picture(s). **You are encouraged to provide project submittals any time prior to August 15, 2016** to ensure inclusion in this year’s program.

Please send your submittals or questions to:
 Matt Parks
 Orchard, Hiltz, & McCliment, Inc.
matt.parks@ohm-advisors.com



FALL OPERATOR TRAINING

There are numerous opportunities for professional development while earning continuing education credits (CECs) this fall. All of the trainings offered are approved by DEQ for CECs and many are offered in partnership with DEQ. For more on any of the Section’s fall trainings, visit the Section website at www.mi-water.org.

Cross Connection course (advanced) (0.5 technical CECs)
 Sep 7 – moves beyond the basics to more advanced principles in addressing cross connection issues.

MI-ACE (1.3 technical and managerial CECs)
 Sep 13-16 – two and half days of general and technical sessions and an opportunity to discuss real in-the-field issues with other water professionals.

Water Security Seminar
 (0.5 other CECs – both drinking water and wastewater)
 Sep 21 – rescheduled from the spring, security for water systems has never been more critical. Between cyber concerns and physical concerns, there’s a lot to think about. Stay current on the latest strategies for keeping your water system secure.

Math & Hydraulics course
 (1.8 technical CECs – both drinking water and wastewater)
 Sep 27-29 – covers many basic mathematics and hydraulics principles important to water system personnel.

Water Treatment II course (1.8 technical CECs)
 Sep 27-29 – covers more advanced concepts in water treatment.

Distribution short course (1.8 technical CECs)
 Oct 11-13 – an in-depth look at water mains, pipeline appurtenances, system operation and more.

Limited Treatment course (1.8 technical CECs)
 Oct 11-13 – covers basic math, chlorination, fluoridation, safety, iron removal, wells and pumps, and other miscellaneous treatment strategies.

Fall Regional Meetings
 (0.5 technical CECs for attending only one day)
 Oct 4 – Livonia
 Oct 5 – Kalamazoo
 Oct 18 – Mt. Pleasant
 Oct 19 – Gaylord
 Oct 25-26 – UP (0.9 technical CECs)

Health & Safety Seminar
 (0.5 other CECs – both drinking water and wastewater)
 Date TBD – new strategies and a few reminders of how to work safely and effectively while carrying out your daily responsibilities

MICHIGAN SECTION AMERICAN WATER WORKS ASSOCIATION RAYMOND J. FAUST SCHOLARSHIP

The Michigan Section American Water Works Association Raymond J. Faust Scholarship was established to promote the pursuit of advanced education by water utility employees, a goal which commemorates the water supply career of Raymond J. Faust with the State of Michigan and the American Water Works Association.

All Michigan water utility employees and their dependents are eligible, as well as other individuals pursuing a water utility

career. The scholarship award is based on demonstrated dedication to the water supply industry and to the pursuit of a college or associate degree in the drinking water field. Applicants will not be evaluated on financial need, **but must be a member of the Michigan Section American Water Works Association.** Application deadline is July 1, 2016. Applications and eligibility criteria can be obtained online at www.mi-water.org.

PIECES FROM THE PAST...



The City of Kalamazoo pumping station was built in 1869, and rehabilitated in 1884, for a total cost of \$750,000. It was equipped with two Gaskill steam pumps that could produce 3 MGD each. The steam pumps drew from two large wells (one well was 22-feet in diameter and 32-feet deep) surrounded by thirteen 6-inch wells that flowed by artesian head into the large wells. The pumping station fed almost 56 miles of main by 1904, separate from the psychiatric hospital water system.

Information taken from *Flowing Wells and Municipal Water Supplies in the Southern Portion of the Southern Lower Peninsula*, Leverett et al USGS 1906.

WATER TASTEOFF



The regional meetings had an excellent turnout of water taste samples. Once again Ann Arbor proved dedicated water treatment will win the judges favor, while Chelsea drove to southwest Michigan to show us what water is supposed to taste like. Mancelona remained the northern lower regional champ and MHOG again won the central Michigan "softening" region. Bergland Township edged out plenty of competition in a tight race to win the UP Institute.

We hope to see all of these fine tasting samples at the 78th Annual Conference in Boyne Highland in September 2016. The Section winner is then eligible to represent the Section in Philadelphia in June 2017.

Meanwhile drink lots of water; it is good for you. 💧

JONES & HENRY ENGINEERS, LTD.

Consulting Engineers Since 1926



Specializing In:
 Wastewater Collection & Treatment
 Water Supply & Treatment
 Storage & Distribution
 Wellhead Protection
 Storm Water Management
 Instrumentation & Controls



Initech Building • 4791 Campus Drive
 Kalamazoo, Michigan 49008
 269/353-9650 • www.jheng.com

Prein & Newhof
 Water Engineering | Water Testing | (616) 364-8491

See Farther.

CHLORTAINER
 TOTAL CONTAINMENT SYSTEM

KEEPING COMMUNITIES SAFE

Rudy Caparros, Jr.
 Sales Manager
 (800) 543-6603
sales@tgotech.com
www.tgotech.com

williams & works
 engineers | surveyors | planners

Water Supply, Treatment,
 and Distribution Services

www.williams-works.com (616) 224-1500

listen. think. deliver.

Water
 Environment
 Transportation
 Energy
 Facilities

CDM Smith
cdmsmith.com

Detroit • Lansing

Utilities Instrumentation Service
SCADA

Instrumentation, Control and SCADA
Design, Install and Repair

Emergency Service
24-HOUR
 Troubleshooting

866-967-9464
www.uiscorp.com

HRC
 HUBBELL, ROTH & CLARK, INC.
 CONSULTING ENGINEERS SINCE 1915

ENGINEERING.
ENVIRONMENT.
EXCELLENCE.

248.454.6300 | www.hrc-engr.com

GREELEY AND HANSEN

designing better
 urban environments

water
 wastewater
 infrastructure

greeley-hansen.com 800-837-9779

DN TANKS Concrete Tank Services
 Inspection | Rehab | Retrofit

**When's the last time
 your tank had a checkup?**

DN Tanks CTS Division is qualified to manage any of your existing concrete tank needs. Whether you need an inspection, safety, or security upgrade, or just have a question - we are here for you!

dntankscts.com | 800.662.8486



COMPANY	PAGE	TELEPHONE	WEBSITE
AECOM	42	248-204-5900	www.aecom.com
ACIPCO	10	205-325-7701	www.american-usa.com
American Spiralweld Pipe	34	866-442-2797	www.american-usa.com/aswp
ARCADIS	18	313-965-8436	www.arcadis-us.com
Badger Meter	41	808-876-3837	www.badgermeter.com
Black & Veatch	40	616-459-2360	www.bv.com
Bluewater Engineered Storage Systems	35	248-351-2699	www.bluewaterstoragesystems.com
CDM Smith	45	313-963-1313	www.cdmsmith.com
Cla-Val	17	800-238-7070	www.cla-val.com
Dixon Engineering, Inc.	7	616-374-3221	www.dixonengineering.net
DN Tanks	45	614-777-9886	www.dntanks.com
Ej	10	800-626-4653	www.ejco.com
Eramosa Engineering	18	519-763-7774	www.eramosa.com
Fishbeck, Thompson, Carr & Huber, Inc.	6	800-456-3824	www.ftch.com
Fluid Process Equipment - SunSource	18	269-345-1923	www.fpepumps.com
Forterra Building Products	4	734-834-0336	www.forterrabp.com
Franklin Miller	6	973-535-9200	www.franklinmiller.com
Greeley and Hansen LLC	45	313-628-0730	www.greeley-hansen.com
HD Supply Waterworks	42	616-222-9500	www.hdswaterworks.com
Hubbell, Roth & Clark, Inc.	45	248-454-6300	www.hrc-engr.com
JGM Valve Corporation	2	248-926-6200	www.jgmvalve.com
Jones and Henry Engineers, Ltd.	44	269-353-9650	www.jheng.com
KAR Laboratories	16	269-381-9666	www.karlabs.com
KEI	42	989-751-7624	www.keicontrols.com
Kennedy Industries	15	248-684-1200	www.kennedyind.com
Kerr Pump & Supply	18	248-543-3880	www.kerrpump.com
Layne	11	517-323-4931	www.layne.com
LiquiForce	48	734-955-2508	www.liquiforce.com
M.E. Simpson Co. Inc.	14	800-255-1521	www.mesimpson.com
Medora Corporation (SolarBee and GridBee brands)	9	866 437 8076	www.medoraco.com
Peerless Midwest Inc.	3	616-527-0050	www.peerlessmidwest.com
Pittsburg Tank & Tower Maintenance Co, Inc.	7	270-826-9000	www.watertank.com
Prein&Newhof	45	616-364-8491	www.preinnewhof.com
SLC Meter, LLC	13	800-433-4332	www.slcmeterllc.com
TGO Technologies Inc.	45	800-543-6603	www.tgotech.com
Total Piping Solutions, Inc.	8	716-372-0160	www.tps.us
UIS Programmable Services	45	734-482-1450	www.uiscorp.com
United Systems	39	800-455-3293	www.united-systems.com
Utility Service Group	47	855-526-4413	www.utilityservice.com
Vesconite Bearings	11	866 635 7596	www.vesconite.com
Wade Trim	42	800-482-2864	www.wadetrim.com
Water Quality Technology Conference	13		www.awwa.org/wqtc16.
Water Solutions Unlimited, Inc.	17	765-719-2956	www.getwsu.com
Waterworks Systems & Equipment, Inc.	12	810-231-1200	www.waterworkssystem.com
Williams & Works	45	800-224-1590	www.williams-works.com

To reach Michigan's water industry professionals through *Water Works News* magazine and its targeted readership, please contact me directly at

Al Whalen, Marketing Manager 1-866-985-9782 awhalen@kelman.ca





your infrastructure our maintenance program

We offer innovative Asset Maintenance Programs for **tanks, water wells, meters, filters, network distribution, and concrete water assets.** Additionally, our portfolio of advanced technology solutions includes **ice pigging, helium leak detection, biosolids management, tank mixing, and THM removal systems.**

Through our maintenance solutions along with our effective technologies, we maximize asset performance, simplify utility operation, and deliver peace of mind to our customers.

Call Water System Consultant Dan Kitchen for excellent service and results.

855.526.4413 • help@utilityservice.com

Utility Service Co., Inc.

1230 Peachtree Street, NE
Suite 1100 | Promenade Building
Atlanta, GA 30309

Tel: 855-526-4413 | www.utilityservice.com





Why Dig?

NO DIGGING REQUIRED

The Gravity Program by LiquiForce is a **proven** and **totally trenchless** sewer rehabilitation program that cities trust.

It provides an as-new sewer system from house to treatment plant with 50-year+ design life and 50% savings*.

It's fast, non-disruptive, environmentally friendly and stops I&I, all without digging.

**CALL US TO JOIN
THE GRAVITY TOUR.**

GRAVITY

PROGRAM BY

LiquiForce

*Compared to conventional digging.

JOIN THE GRAVITY TOUR: 1-800-265-0863 • liquiforce.com