



Annual Report



2017

# Dear Fellow EDRAites,

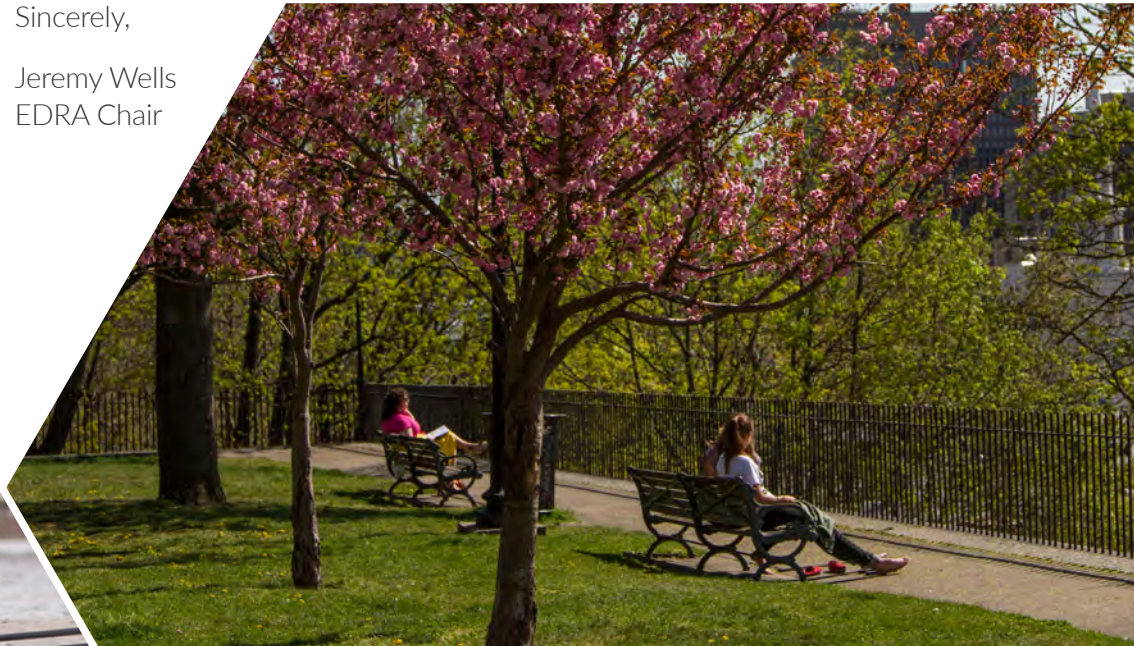
2017 was both rewarding and challenging for EDRA. EDRA48 in Madison, Wisconsin, was a successful conference in terms of attendance and we received many accolades on its content, including the keynote and plenaries. We could not have wished for a better location on Lake Monona and the weather was perfect. And, of course, all of this could not have happened without our excellent local planning team consisting of Jung-hye Shin, Samuel F. Dennis, and Debarati “Mimi” Majumdar Narayan with additional support from the University of Wisconsin – Madison. And I should also thank the many reviewers of papers, abstracts, certifications, and awards that made the conference possible as well.

EDRA receives the majority of its revenue through our annual conference; in a good year with lots of attendees, we are often quite successful. But we’re still dealing with the financial repercussions of low attendance at EDRA47 caused by states banning attendees’ travel to Raleigh because of North Carolina’s “bathroom bill” passed by its legislature during the planning of this conference. While EDRA48 was in the black, it was not able to offset our losses at EDRA47. As I write this letter, EDRA49 is shaping up to be a great conference, and we have high hopes that it too will push us further into the black. In 2017, the EDRA board continued our work on diversifying our income streams, including increasing memberships and sponsorships, in recognition of assuring a sustainable future for the organization.

Ultimately, what makes EDRA vibrant, sustainable, and relevant are EDRA members, like you. We need your enthusiasm and continued support, especially through your volunteer efforts in our committees and knowledge networks. Spread the word to others about the benefits of membership because there is no other organization quite like EDRA and our mission to advance and disseminate research, teaching, and practice toward improving an understanding of the relationships among people, their built environments, and natural eco-systems. Make sure you’re a part of our future!

Sincerely,

Jeremy Wells  
EDRA Chair



# Mission



EDRA's purpose is to advance and disseminate research, teaching, and practice toward improving an understanding of the relationships among people, their built environments, and natural eco-systems.

The mission of EDRA is to provide a collaborative, multidisciplinary community to connect theory, research, teaching, and practice to recognize, create, and advocate for environments that are responsive to diverse human needs. EDRA is committed to equity, inclusion, and respect for all persons.

*EDRA came into being in the 1960s, during a period of social awareness and social unrest, but also new horizons and new visions. True to its origins, EDRA continues to believe in an agenda of social responsibility that has grown from a barely perceptible idea to a more fully-formed vision for healthier, more democratic human environments.*

# Strategic Goals

1. To showcase leadership in environmental design research
2. To provide access to environment-behavior research and design research
3. To become a leading forum for collaboration among researchers, designers, and practitioners
4. To become increasingly diverse: multi- and inter-disciplinary; international/global; culturally fostering inclusivity in order to reflect the broader spectrum of environment and behavior research and practice
5. To become financially stable – prioritize strategic fundraising and sponsorship to stabilize and grow EDRA
6. To increase attendance numbers and sponsorships for EDRA conferences



EDRA bridges theory, research, teaching, and practice to:

- Recognize and create more humane environments in collaboration with global stakeholders/communities
- Transcend disciplinary boundaries and industry sectors in collaborative pursuit of environments that are responsive to diverse human needs.
- Promote cutting-edge research and practice that is essential to improve quality of life for all people
- Advocate for diverse voices in the pursuit of social justice

## Vision

# Membership

**385**  
Active Members

## EDRA Placemaker Members

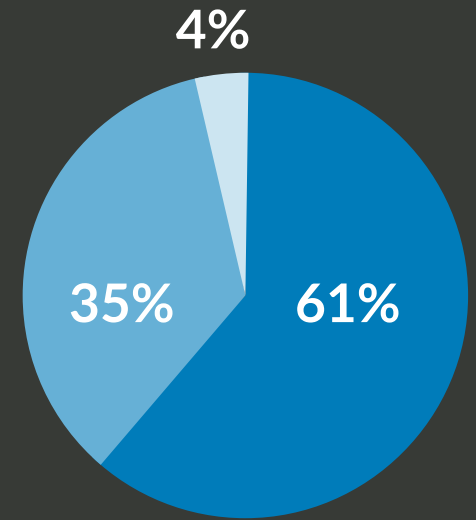
Gowri Betrabet Gulwadi  
Peter Hourihan  
Lynn Paxson

## EDRA Wayfinder Members

Sherry Ahrentzen  
Cherif Amor  
Kathryn Anthony  
David Boeck  
Stewart C. Cluck  
Thierry Rosenheck  
Daniel Stokols  
Richard Elliot Wener

## EDRA Organizational Members

American Art Resources  
BBH Design  
HGA  
HKS Inc.  
Kuwait University  
Pennsylvania State University  
Rutgers Center for Green Building  
Rutgers University  
Stony Brook University  
Texas Tech University - College of Architecture  
UB School of Architecture and Planning  
Université de Montréal  
University of Colorado Boulder Program in Environmental Design  
University of Idaho- College of Art & Architecture  
University of Manitoba  
UNL College of Architecture  
WorkingSpaces



**61%** Academic, Practice, & Research Professionals

**35%** Students & Young Professionals

**4%** Non-profit & Organizational Members



23 Knowledge Networks



17 Countries



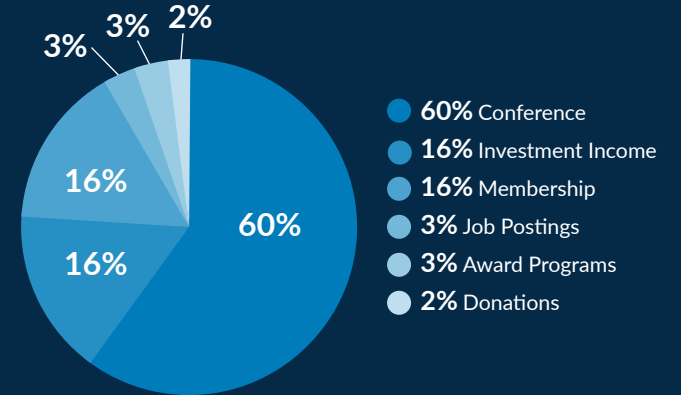
# Financials



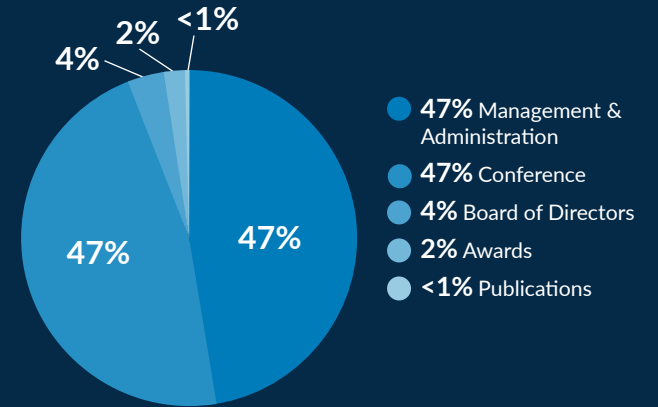
Revenue	2016	2017
Membership Dues	54,575	42,258
Annual Conference	133,286	164,104
Great Places Award Entry Fee	5,978	8,445
Publications	4,936	9,287
Contributions	11,670	5,500
Investment Income	22,762	43,907
<b>Total Revenue</b>	<b>233,207</b>	<b>273,501</b>

Expenses	2016	2017
Professional Fees	4,000	4,625
Office	2,213	1,415
Printing and Postage	1,810	1,555
Management Fees	102,425	104,000
Graphic Design Services	4,181	-
Information Technology	8,557	6,364
Audio Visual	18,546	21,009
Conference & Meetings	53,140	61,786
Grants and Awards	3,132	4,681
Travel and Lodging	14,683	7,486
Food and Beverage	33,728	46,187
Insurance	833	2,005
Credit Card and Bank Fees	6,892	8,890
Miscellaneous	1,910	2,105
<b>Total Expenses</b>	<b>256,050</b>	<b>272,108</b>
<b>Net Income (Loss)</b>	<b>(22,843)</b>	<b>1,393</b>

## Revenue by Area



## Expenses by Area



# EDRA48

Every year, socially motivated design professionals and researchers come together at EDRA with a shared belief: in creating environments that matter to people and where people matter. It is time for critical reflection, collective thinking, and dialog about the future of environmental design. But who do we design for? How do we listen to their needs and desires? How do we navigate the inevitable conflicts between different stakeholders in the placemaking process? What kinds of environments do we want to create together in the end? The conference theme of EDRA48, “Voices of Place: Empower, Engage, Energize” set out with these fundamental questions to address issues of equity, justice, and inclusion in the context of environmental design across various topical landscapes including voices across genders, generations, cultures, times; voices from the margins, from the earth, and from those who often go unheard.

EDRA48 was held from May 31 to June 3, 2017, in Madison, Wisconsin.

**Jung-hye Shin, Ph.D.**  
EDRA 48 Madison Co-Chair

**Samuel Dennis, Ph.D.**  
EDRA 48 Madison Co-Chair

**Debarati “Mimi” Majumdar Narayan**  
EDRA 48 Madison Co-Chair



# EDRA48

## EDRA48 Keynote Majora Carter

Community as Corporation:  
The Talent Retention Imperative



### EDRA48 Plenary 1

Voices from the Past: Linking Historic Preservation to People and Place with the Social Sciences  
**David Brown, Tom Mayes, Jeremy Wells**



### EDRA48 Plenary Session 2

Designing Communities for Health: Stories from the Field  
**Kate Konkle, Chris Krehmeyer, Kristie Rauter Egge, Sara Stewart**



### EDRA Plenary Session 3

Standing with Standing Rock: Voices of Environmental Resistance  
**Patty Loew**

## Awards

### EDRA48 Best Paper Award Winner – 1st Place

Environmental characteristics that enable dying patients to exercise choice and personal preference – **Sharmin Kader**

### EDRA48 Best Paper Award Winner – 2nd Place

Mitigating Stress-Inducing Effects of Viewing Urban Hardscapes with Water Sounds – **Hope Rising**

### EDRA 48 Best Student Paper

Comparison of Aging in Place in Japan, South Korea, and China – **Yeji Yi**

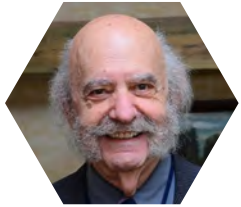
### EDAR48 Best Display Poster

Teaching and Learning the City: Assessing Outcomes of a Design Service Learning Course in Detroit – **Claudia Bernasconi, Nicole Fricke, & Rachel Pisano**

# EDRA Awards

# Great Places Awards

2017  
GREAT  
PLACES  
AWARDS



## Career Award

**2017 Recipient**  
Henry Sanoff, Ph.D.



## Service Award

**2017 Recipient**  
Tasoulla Hadjiyanni, Ph.D.



## Michael Brill Award

**2016 Recipient**  
Georgia Lindsay, Ph.D.  
University of Colorado Boulder



## Place Design Award

**2017 Recipient**  
Mariahilfer Strasse, Vienna



## Place Research Award

**2017 Recipient**  
The Renewable Energy Landscape



## Place Planning Award

**2017 Recipient**  
Making Our Own Space (MOOS)



## Place Book Award

**2017 Recipient**  
Designing for Autism Spectrum Disorders

## Great Places Awards 2017 Jury Panel

Mark Gillem, University of Oregon/Urban Collaborative  
Jutta Mason, Centre for Local Research into Public Space (CELOS)

Brian Orland, University of Georgia  
David Rubin, Land Collective  
Randa Tukan, HOK



# EDRA CORE

## 2017 CORE Recipients

### **Campus Capital Framework: Mapping Meaning to Inform the Michigan Union Renovation**

Workshop Architects, University of Wisconsin Milwaukee, School of Architecture & Urban Planning; Study Team – Brian Schermer, Jan van den Kieboom, Peter van den Kieboom, Nick Robinson and Sweta Meier

### **Evaluating High-Performance Design Strategies to Improve Educational Performance and Occupant Well-Being: A Comparative Pre- and Post-Occupancy Evaluation of a School in Cambridge, Massachusetts**

Perkins Eastman; Study Team – Emily Chmielewski, Katie Herber, Heather Jauregui, Sean O'Donnell, and Jana Silsby

### **Neural Correlates of Nature Stimuli: an fMRI Study**

Sky Factory, Inc., Texas Tech University; Study Team – Debajyoti Pati, Michael O'Boyle, William Witherspoon, Cherif Amor, David Navarrete, Jiancheng (Richie) Hou, Shabboo Valipoor, and Dan Fang

### **On-Stage/Off-Stage Clinic Design: Implications for Operational Efficiencies, Staff Collaboration and Privacy**

HGA Architects and Engineers; Study Team – Dennis Vonasek, Len Kaiser, Kara Freihoefer, and Sara Bayramzadeh

### **Revitalizing Underutilized Social-Study Areas in a Student Residence Hall**

TreanorHL; Study Team – Malia Bucher, Kent Spreckelmeyer, Nadia Zhiri, Joellen Tipton, and Sharmin Kader



**Sherry Ahrentzen, Ph.D.**,  
Shimberg Professor of  
Housing Studies, Shimberg  
Center for Housing Studies

**Meredith A Banasiak**, Boulder  
Associates Architects

**Gowri Betrabet Gulwadi,  
Ph.D.**, Associate Professor,  
University of Northern Iowa

**Sheila F. Cahnman,  
FAIA, FACHA, LEED AP**,  
JumpGarden Consulting

**Hui Cai, Ph.D.**, Assistant  
Professor, University of  
Kansas

**Maggie Calkins, Ph.D.**,  
Executive Director, The  
Mayer-Rothschild Foundation

**Emily Chmielewski, EDAC**,  
EDRA Board Liaison to  
CORE, CORE Co-Chair,  
Senior Design Researcher and  
Associate, Perkins Eastman

**Susan Chung, Ph.D.**, Senior  
Research Associate, ASID

**Fiona de Vos, Ph.D.**, Owner  
and Founder, Studio dVO

**Hessam Ghamari, Ph.D.**,  
Assistant Professor,  
Appalachian State University

**Anjali Joseph, Ph.D.**,  
EDAC, Endowed Chair in  
Architecture + Health Design  
and Research, Clemson  
University

**Shireen Kanakri, M.Arch.,  
Ph.D.**, Assistant Professor,  
Ball State University

**Migette Kaup, Ph.D., IDEC,  
IIDA, ASID, EDAC**, Professor,  
Kansas State University

**Shiriki Kumanyika, Ph.D.,  
MPH**, Emeritus Professor,  
Perelman School of Medicine,  
University of Pennsylvania

**Lori McGilberry, CHID,  
EDAC, IIDA**, Healthcare  
Segment Manager, Gerflor  
USA

**Diana Nicholas, MFA,  
B.Arch.**, Assistant Professor,  
Associate Director, MS  
Interior Architecture &  
Design, Director, SBE Minor,  
Drexel University

**Michelle Ossmann, Ph.D.**,  
Director, Healthcare  
Environments, Steelcase  
Health

**Giyoung Park, Ph.D.**,  
AIA, Senior Design Research  
and Associate, HKS, Inc.

## Reviewers

**Melissa Piatkowski, EDAC**,  
Research Associate, The  
Center for Health Design

**Suzanne Schectman, MS**,  
Senior Design Researcher,  
THE MEME Design

**Nancy M. Wells, Ph.D.**,  
Environmental Psychologist,  
Cornell University Human  
Ecology

**Val Williams, M.Arch, CORE**  
Co-Chair, Senior Healthcare  
Planner

**Terri Zborowsky, Ph.D.,  
EDAC**, Principal Zborowsky  
Health Care Design  
Consulting; Adjunct Faculty,  
University of Minnesota



# EDRA Leadership

## Board of Directors (2017-2018)



<b>Deni Ruggeri</b> Chair-Elect	<b>Jeremy Wells</b> Chair
<b>Nisha Fernando</b> Secretary	<b>Danny Mittleman</b> Treasurer
<b>Karen Kim</b> Student Representative	<b>Lynne Manzo</b> Past Chair
<b>Sharmin Kader</b> Member	<b>David Boeck</b> Member
<b>Elizabeth Hewitt</b> Member	<b>Linda Nubani</b> Member
	<b>Sue Weidemann</b> Emeritus Member

## Headquarters Team

Lee Helgen, Executive Director  
Amanda Beneke, Event Planner  
Brian Fewell, Communication Specialist  
Whitney Murray, Membership Specialist  
Julia Renner, Professional Development Specialist  
Blake Finger, Sponsorship Coordinator  
Amanda Ewald, Finance and Accounting

## Committees

### Communications

Nisha Fernando, Chair

### Fundraising and Development

Linda Nubani, Chair

### EDRA49 Conference Committee

Deni Ruggeri, Program Chair

David Boeck, Co-Chair

Jingen Guo, Co-Chair

Tilanka Chandrasekera, Co-Chair

### Finance

Danny Mittleman, Chair

### Members & Partners

Elizabeth Hewitt, Chair

### Governance

Lynne Manzo, Chair

### Recognition

Sharmin Kader, Chair

### Program Leads

**CORE Program** – Emily Chmielewski

**EDRA Awards** – Rula Awwad-Rafferty

**Great Places Awards** – Mallika Bose

**Michael Brill Award** – Sue Weidemann

# Knowledge Network Chairs

## **Active Living by Design**

Jessica Cook and David L. Boeck

## **Building Process Alliance**

Susan Ingham

## **Children, Youth, and Environment**

Janet Loebach and Kate Bishop

## **Cities and Globalization**

Shireen Kanakri

## **Communication**

Sheila Gobes-Ryan and Susan Drucker

## **Cultural Aspects of Design**

Sanjoy Mazumdar and Nisha Fernando

## **Cyberspace and Digital Environments**

Danny Mittleman and Paul Platosh

## **Environment-Gerontology**

Emily Roberts

## **Environmental and Architectural Phenomenology**

David Seamon

## **Environmental Design Research Education**

Eleftheris Pavlides and Rula Awwad-Rafferty

## **Historic Environments**

Jeremy Wells and April Allen

## **International Housing Research**

Eunju Hwang and Fang Xu

## **Interior Design**

Cherif Amor

## **International Connections**

Orcun Kepez

## **Movement in Designed Environments**

Ipek Kaynar Rohloff and Julie Zook

## **Nature and Ecology**

Susana Alves and J. Aaron Hipp

## **Participation**

Lynn Paxson

## **POE/Programming**

Joon-Ho Choi, Lubomir Popov, and Keith Jundanian

## **Residential Environments**

Keith Miller and Ali Momen-Heravi

## **Student Affairs**

Karen Kim

## **Sustainable Planning and Design**

Rich Wener and Jennifer Senick

## **Work Environments**

Sally Augustin, Sheila Gobes-Ryan and Cynthia Milota

