



CLEAR's Seventh International Congress on Professional and Occupational Regulation

DUBLIN, IRELAND | MAY 3-5, 2023



Unique to the UK: A new model of board governance

Colum Conway | Social Work England

The history of regulation of social workers in England

Statutory regulator

2001: GSCC

General Social Care Council (GSSC), set up 2001 as a non-departmental public body of the Department of Health. The first statutory regulator of social workers. Register opened 2003.

2012: HCPC

Health and Care Professions Council (HCPC) took over regulatory functions from GSCC in 2012.

2019: Social Work England

1962
Council for Training in Social Work set up

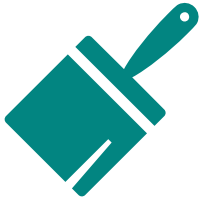
1970
Renamed Central Council for Education and Training in Social Work (CCETSW)

2009
Government task force to review practice & reform education

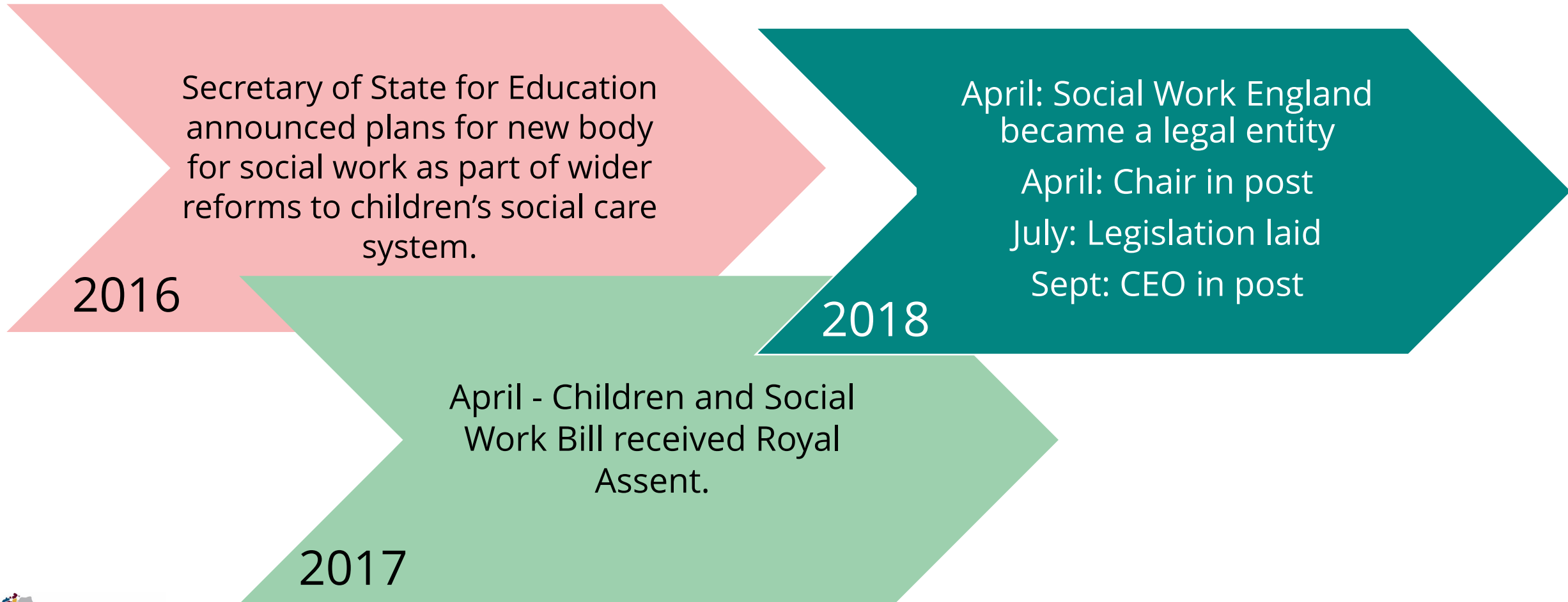
2012
College of Social Work set up. Disbanded in 2015.

2013
First Chief Social Workers. Social Work Reform Board disbanded.

Social Work England takes shape



- A new specialist regulator for social workers was established under the Children and Social Work Act 2017 and The Social Workers Regulations 2018.



Social Work England goes live



January: appointment rules published

Feb – May: consultation on rules and standards

July: 82 people in post and 200 partners appointed

November: fully staffed

2019

Social Work England started regulating all social workers in England on 2 December 2019

Founding objectives in our legislation

Protect, promote and maintain the health, safety and well-being of the public

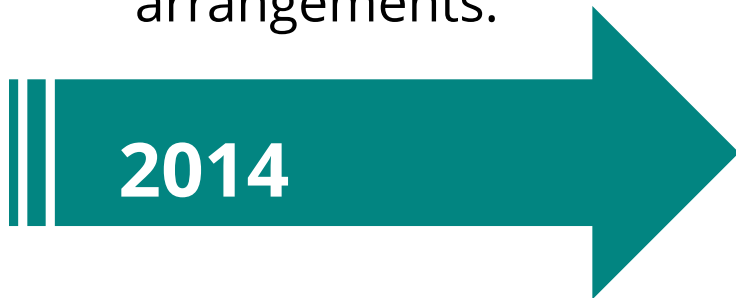
Promote and maintain proper professional standards for social workers in England

Promote and maintain public confidence in social workers in England

#ICPOR2023

Governance and autonomy on professional regulation

- Law Commission review of UK law relating to regulation of health care professionals. Includes governance arrangements.



- Government responds with promise of more autonomy for regulators to set own operating procedures.



- Consultation on new legislation, including governance. Strong governance central to accountability.



Governance and autonomy on professional regulation

- 2017: Department for Health and Social Care publishes its consultation outcome.
- The councils of regulatory bodies will become boards which comprise executive and non executive directors.
- They will be appointed on the basis they have the skills, knowledge and expertise to ensure the regulator discharges its functions effectively.



Our governance structure



Sponsor
departments

Department for
Education (DfE)

Department of
Health and Social
Care (DHSC)

Our board

Chair

Chief Executive

6 Non-Executive Directors

Executive Leadership Team

How we are governed

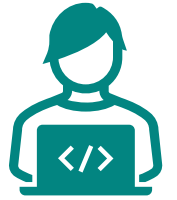


- Social Work England is a non-departmental public body, operating at arm's length from government.
- The Secretary of State for Education has ultimate accountability for Social Work England in Parliament. The Secretary of State's statutory powers in respect of Social Work England are set out in the Children and Social Work Act 2017.
- Our board holds the executive team to account and provides the overall strategic direction for the organisation. It is responsible for overseeing Social Work England's regulatory functions.
- Our board is supported by two sub-committees in delivering our core governance functions: the remuneration committee and the audit, risk and assurance committee.

The register

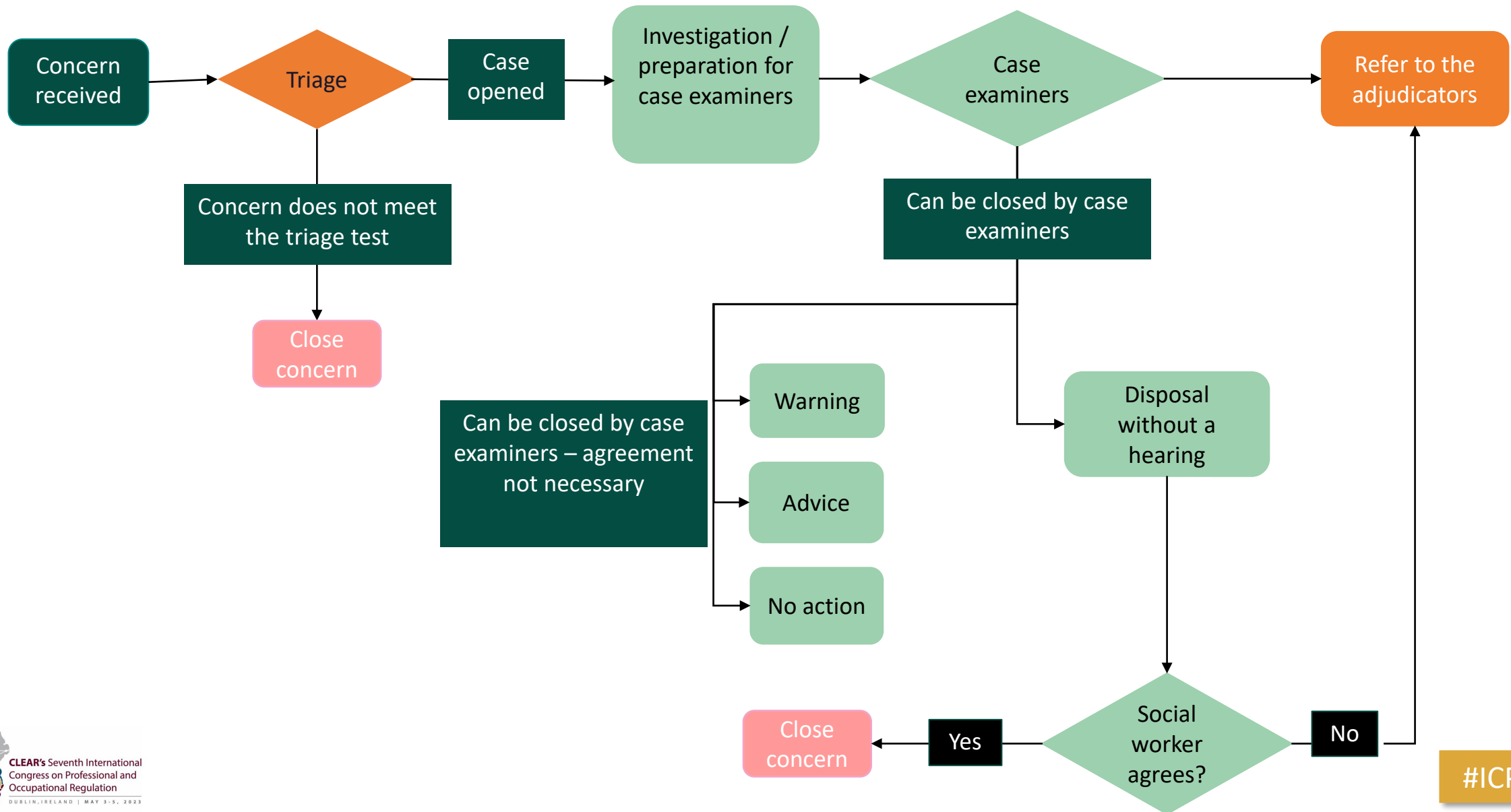


Search the register



- As at 30 November 2022 there were 100,654 registered social workers in England.
- In the 2021 to 2022 registration year:
 - 5,335 social workers left the register and 6,715 joined the register.
 - We received 1684 applications from overseas applicants. This was a 175% increase on our first year as regulator.
- Our rules allow us to appoint registration advisers, who are social workers, for certain parts of the registration process. The advisers' role is to:
 - Check that overseas applicants have qualifications that are comparable to a qualification gained on the social work courses we regulate in England.
 - Sit on a panel of adjudicators that consider appeals when we have rejected a registration application or identified registration fraud. We received 2 registration appeals in total in the last financial year.
 - Sit on a panel of adjudicators to consider applications to restore registration, where the applicant has been previously removed from the register.

Fitness to practise process



Fitness to practise – challenges

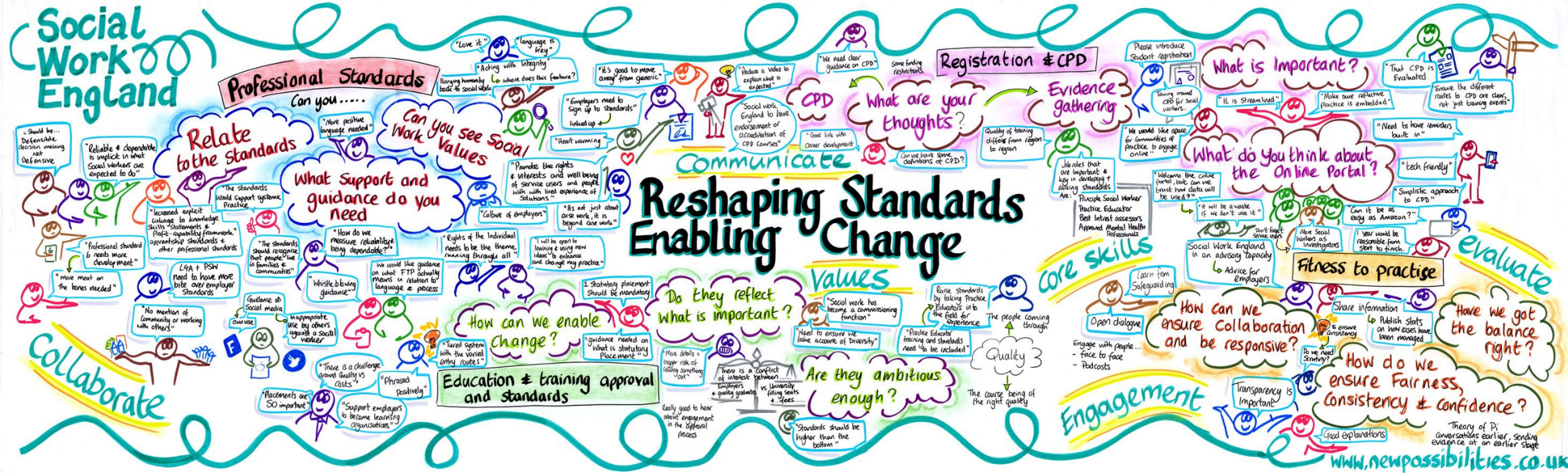


	Figures used to plan go live budget and staffing	Current	Variance
Fitness to practise referrals per year	1,174*	1,836	+56%
Rate of referral to hearing	25%**	37%	+12%
Avg. days per hearing	3.7*	5.5	+49%

*based on HCPC 2016 data sourced by 'We can work it out'

** based in benchmarking against other regulators with comparable frameworks

Consulting and collaborating for change



www.newpossibilities.co.uk

Co-production and engagement



Our stakeholders

- c. 100,000 registrants
- 600+ organisations
- People with lived experience of social work
- General public

National Advisory Forum

Social Work Week

Social media

Education and Training Advisory Forum

Research and data

State of the nation report

National workforce roundtable

Consultations

Social Work Now e-newsletter

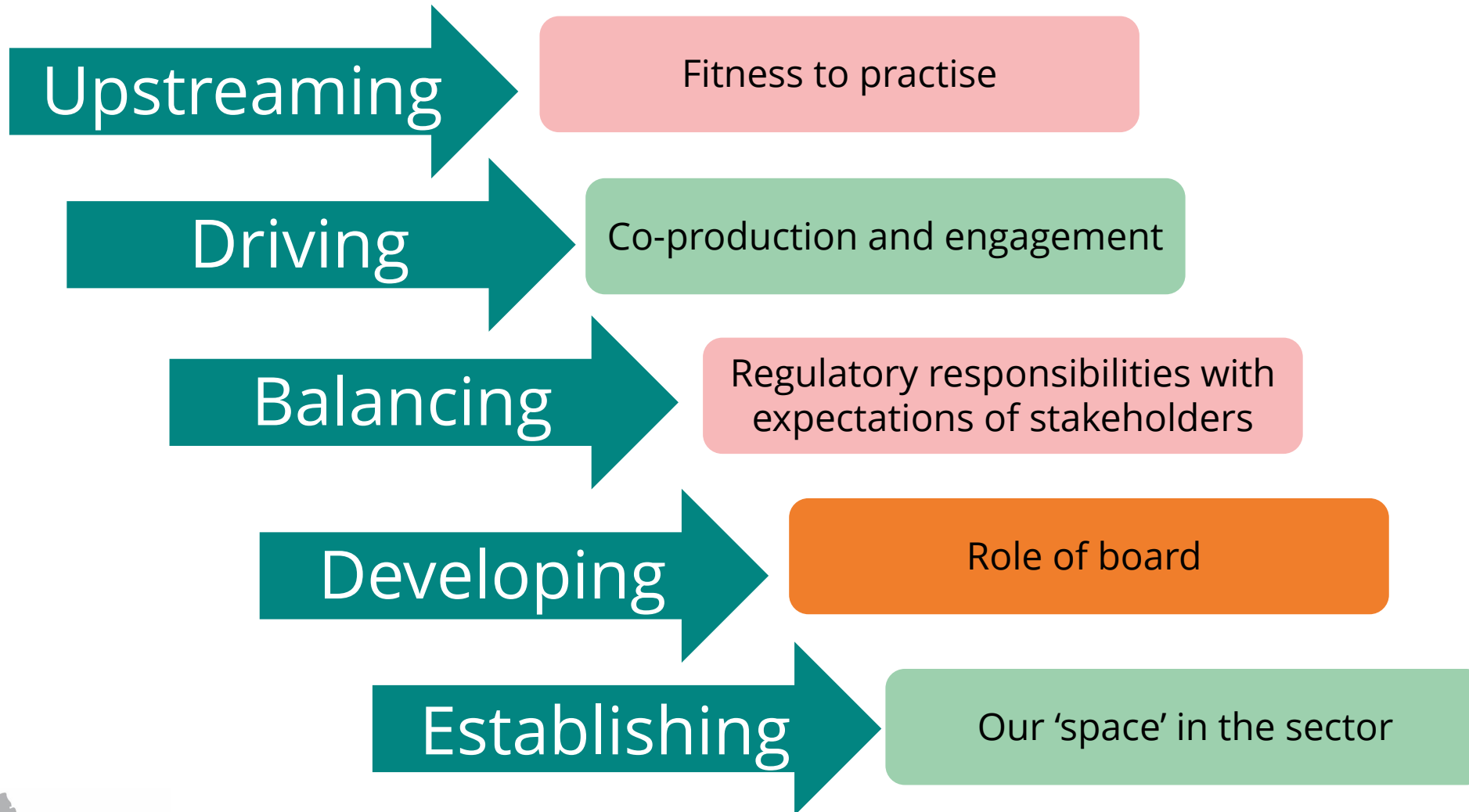
Regional engagement leads

Anti-Racist Steering Group

Joint regulators forums

#ICPOR2023

Conclusion: the future



Thank you

- **Colum Conway, Chief Executive**
- Colum.Conway@socialworkengland.org.uk
- www.socialworkengland.org.uk

**Social
Work
England**