



# WINTER IS COMING

## ENGAGING IN PROACTIVE PREVENTATIVE MAINTENANCE

[WWW.URBANWATERPROOFING.COM](http://WWW.URBANWATERPROOFING.COM)



## 3 THINGS TO CHECK NOW

### #1 - ROOF AND DECKS

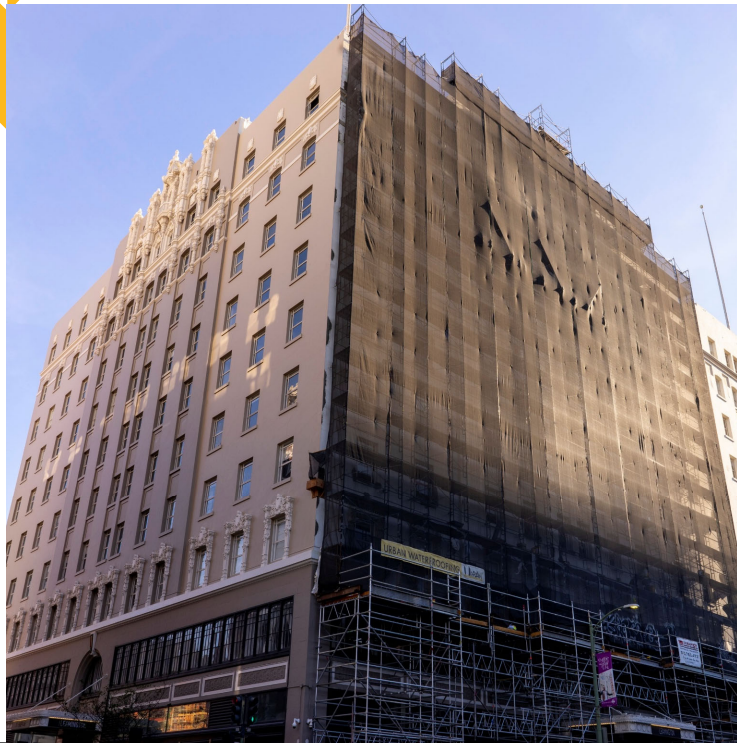
---

Regular checks of the roof and exterior decks are crucial for spotting potential vulnerabilities early on. These inspections help in identifying issues like leaks, damage, or deterioration, ensuring the building's structural integrity and longevity.

**PRO TIP:** Pay special attention to areas prone to water intrusion, such as penetrations and flashing details.

## ROOF AND DECKS DAMAGE AND FAILURES





## 3 THINGS TO CHECK NOW

### #2 - EXTERIOR FAÇADE

An exterior facade inspection is key to maintaining both aesthetics and structural soundness. By routinely inspecting walls, windows, and doors, building engineers can detect issues such as cracks or leaks, allowing for timely repairs and preventing further damage.

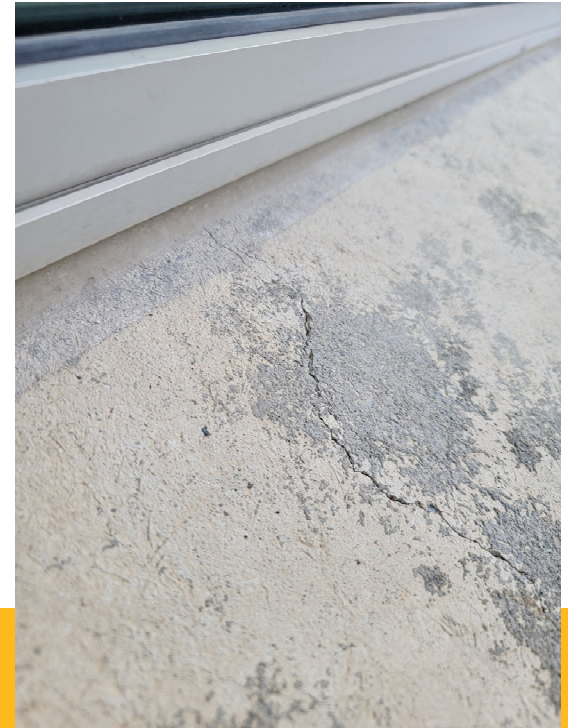
**PRO TIP:** Look out for signs of moisture infiltration, such as staining or efflorescence, which could indicate underlying problems.

# SPALLS, CRACKS, FALLING HAZARDS



[WWW.URBANWATERPROOFING.COM](http://WWW.URBANWATERPROOFING.COM)

# GAPS AND SEALANT FAILURES





## 3 THINGS TO CHECK NOW

### #3 – Parking Garages

Monitoring garage walls and slabs for cracks and signs of water intrusion is vital for ensuring the structure's functionality and longevity. Regular inspections enable building management to take prompt action and prevent water intrusion and structural issues.

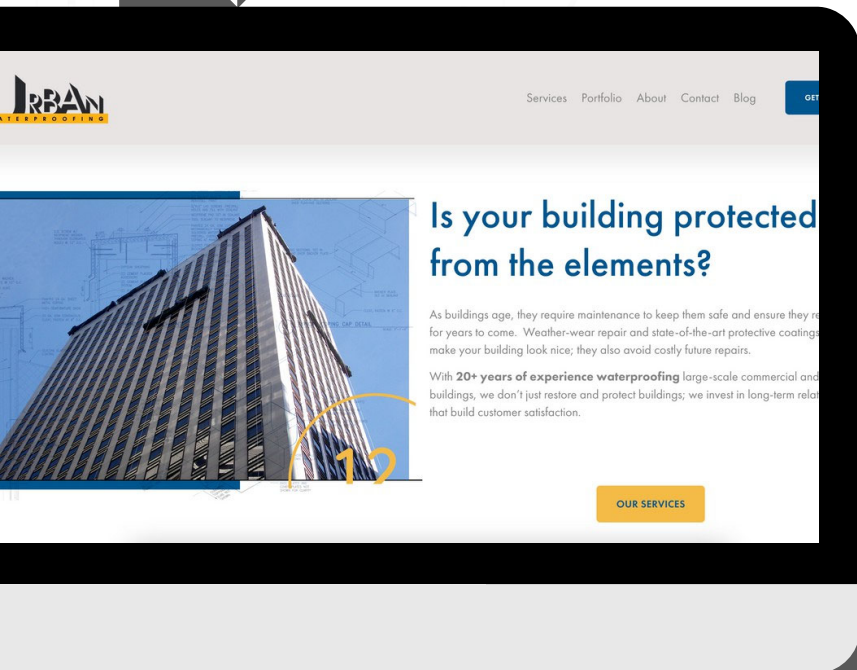
**PRO TIP:** Winter is the perfect time to address below grade level leaks. No waiting for Spring necessary!

## CRACKS AND BUILDING SETTLEMENT



## PONDING WATER, EFFLORESCENCE





# CONTACT US



(415) 847-0900



[nathan.sills@urbanco.com](mailto:nathan.sills@urbanco.com)



[www.urbanwaterproofing.com](http://www.urbanwaterproofing.com)

