

OMNI® HOTELS & RESORTS

louisville

The Safety and Loss Prevention Department at the Omni Louisville is pleased to present to you the following information about our safety program:

Our Mission Statement

**To provide a safe and secure environment for our guests
while they enjoy our luxurious facilities for work or play**

HOTEL EMERGENCY PROCEDURES:

The Hotel has a comprehensive emergency procedures manual, which covers all emergency situations.

The Hotel also has an Emergency Response Team or E.R.T. This Team consists of the Manager on Duty, Loss Prevention Officers and Engineering staff. All members of the E.R.T. receive on-going training.

The Safety and Loss Prevention Officers are certified in C.P.R. and First Aid through the American Heart Association and act as First Responders to all medical emergencies. In addition, an Automated External Defibrillator (A.E.D.) is kept in the Security Office and Front Desk, Ballroom, and Fitness/Pool area along with a medical trauma bag. Both of which are always brought to the scene of any medical incident.

The in-house emergency number is 1539.

EMERGENCY SERVICES:

The Omni Louisville is served by the Louisville Fire/Rescue Department for Fire and Paramedic service. The closest Fire/Rescue station is located 1/2 mile from the Hotel. Phone number is 502-574-2949.

Law Enforcement service is provided by the Louisville Metro Police Department. The non-emergency phone number is 502- 574-7946.

HOSPITALS/IN-ROOM CARE/WALK-IN MEDICAL CLINICS AND PHARMACIES:

The closest hospital to the Hotel is:

Kentucky One Health Jewish Hospital

Address: 200 Abraham Flexner Way, Louisville, KY 40202

Hours: Open 24 hours

Phone: (502) 587-4011

The closest 24 hr. pharmacy:

CVS Pharmacy

Address: 2222 Bardstown Rd, Louisville, KY 40205

Hours: Open 24 hours

Phone: (502) 459-6563

FIRE ALARM AND SUPPRESSION SYSTEM:

Fire Department is a half mile from our property. The hotel is equipped with a state-of-the-art fire alarm and suppression system. Every guest room, meeting room and hallway is attached to the sprinkler system. Smoke detectors are also strategically located in all areas and work in conjunction with the fire alarm and sprinklers. The sprinkler system will not engage unless the presence of extreme heat is present.

There are numerous exits from the Lobby and Lower Lobby floors. The guest rooms have fire exit stairs which lead to the outside Lower Level. The resort staff and the E.R.T. are trained to assist guests in the event of a fire emergency, with great emphasis placed on assisting our guests with physical disabilities.

SECURITY OR LAW ENFORCEMENT ASSISTANCE AVAILABLE:

Many of our groups request additional security for assisting with programs or functions. The resort security department is ready to assist you with providing additional, dedicated personnel. The cost of a Security Officer for your function is \$60.00 per hour.

If your group requires the assistance of an armed Officer or requires a uniformed law enforcement presence, services are contracted by the resort through the Louisville Metro Office. Please contact your Convention Services Manager for these services.

The Omni Louisville respects the fact that some of our groups have long standing relationships with private security companies. If an outside security company is used, we request that they provide a certificate of insurance and liability. In accordance with Omni Hotels' policy, we further request that all outside security officers be unarmed. Our team will extend every courtesy to any outside company and provide a brief orientation and overview of the hotel.

BEN TAYLOR

Director Loss Prevention

Omni Louisville Hotel

(502) 313-6706

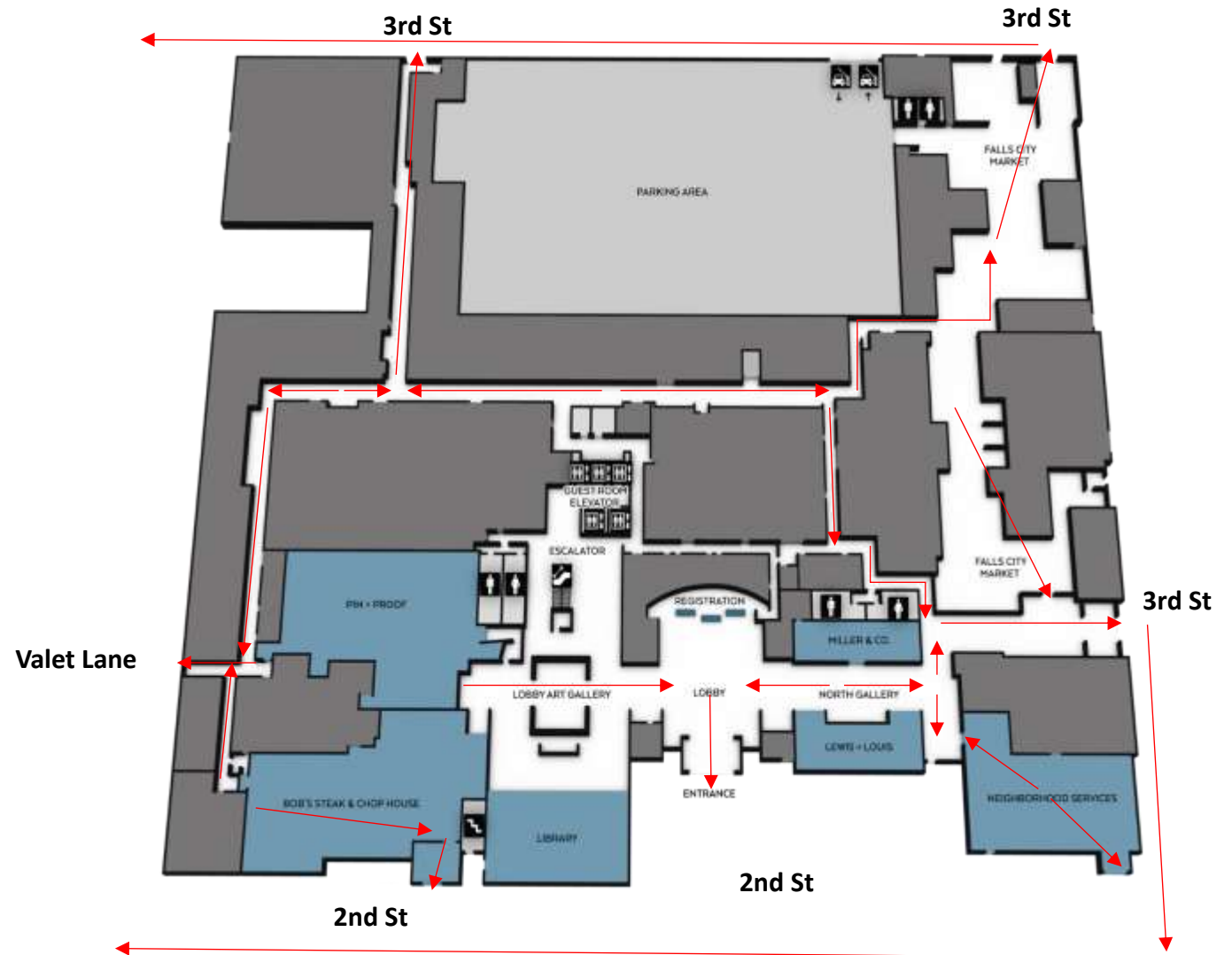
ben.taylor@omnihotels.com

EXECUTIVE PROTECTION for VIP'S AND DIGNITARIES:

In the event your group has high profile Executives, Dignitaries or Celebrities, Security Director Ben Taylor can assist you to ensure their privacy during their stay. Special arrangements can be made for facilitating safe and secure movements to and from the hotel or if it's just from guest rooms to ballrooms. Please advise your Convention Services Manager if this service is needed.

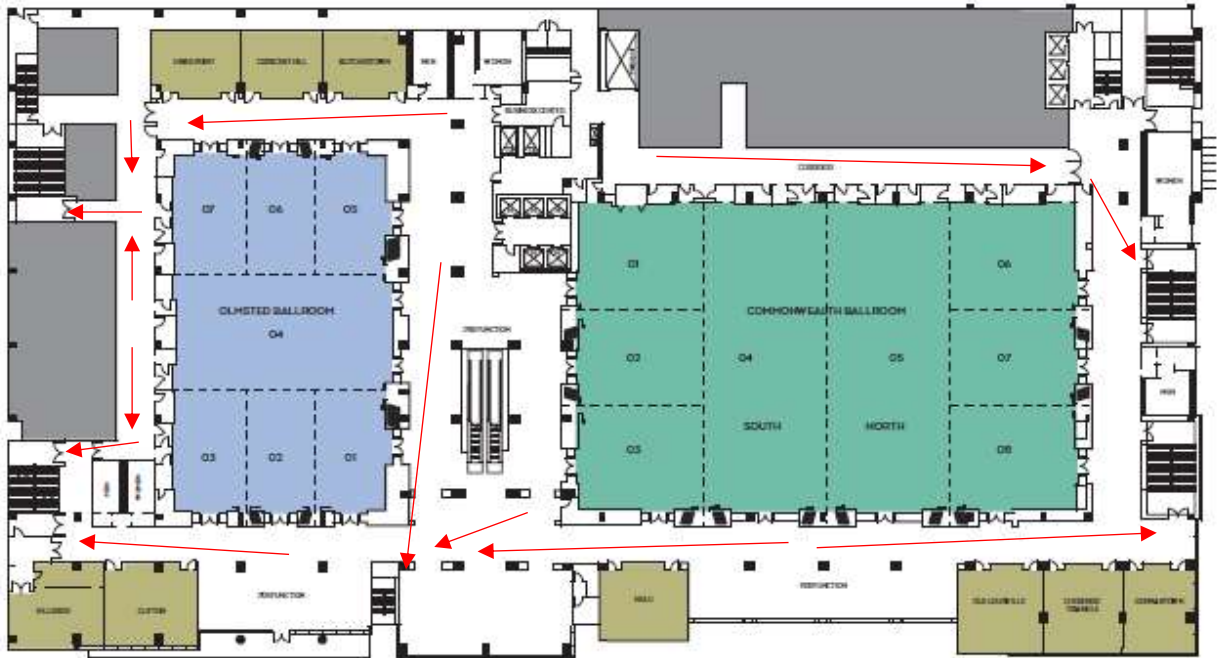
LEVEL 1 Exit Routes

All guests and staff will go to the Grassy Area



OMNI LOUISVILLE HOTEL MEETING SPACE

LEVEL TWO



LEVEL THREE

