



ACADEMY ROUNDUP

The Official Newsletter for the APTA Academy of Education

A source of news, announcements, and upcoming events for physical therapy educators.

Newsletter Highlights

Announcements:

- **ELC 2026 Submissions Are Open!**
- JoPTE Inclusion in the Web of Science!
- **Volunteer for the Academy!**
- Emerging Leader Nominations
- 2025 Annual Report Now Available
- CSM 2027 Call For Proposals
- Physical Therapy Faculty Development Workshop (PTFDW) | Registration Open
- Simulation Networking Community Launches Monthly Chats | **Tomorrow, March 5th**
- SOESIG Education Research Consulting Session
- Call for JoPTE Journal Club Committee Members!
- The Journal of Physical Therapy Education (*JoPTE*) Editorial Fellowship
- Academy Announces Grant, Award Winners
- **Webinars**
 - RFESIG Journal Club | Mar 10 | 8PM
 - AESIG Journal Club | Mar 19 | 7:30PM
 - RFESIG Journal Club | Jun 9 | 8PM
 - RFESIG Journal Club | Sept 8 | 8PM
 - RFESIG Journal Club | Dec 8 | 8PM
- SIG Spotlight
 - Interprofessional Education and Practice SIG

ANNOUNCEMENTS

ELC 2026 Submissions Are Open!

Submit Your Education Session, Platform, or Poster Today!



October 16-18 | Marriott Marquis | Washington, D.C.

This year's conference will feature two types of educational sessions to accommodate different learning styles and preferences:

- Standard Educational Presentations (90 min): Standard educational presentations are scheduled for 1 ½ hours and will occur any of the three days of the conference.
- MicroLearn Educational Session (25-30 min): These compact, focused sessions are designed to deliver quick insights, practical skills, and actionable takeaways. Authors will be paired with two other MicroLearn submissions of similar topics to make up a complete 90-minute session.

Submissions for poster and platform abstracts are also now being accepted. Posters are displayed for an entire day during the conference, with presenters scheduled for 45-minute time slots either in the morning or afternoon. Platform presentations are 15-minute oral presentations scheduled throughout the 3 days of the conference.

**SUBMISSION PORTAL FOR ELC 2026:
OPENS MARCH 4th, AND CLOSES APRIL 17th**

[Submit Abstract](#)

[Submit Educational Session](#)

[Submission Guidelines](#)

For technical and non-technical questions about submission requirements, or the submission process, contact info@pteducationleadershipconference.org.

Sign up using the form below to receive informational updates about the 21st Annual Physical Therapist Education Leadership Conference.

[Sign Up](#)

The Journal of Physical Therapy Education Has Been Selected for Inclusion in Web of Science

We are thrilled to announce that the Journal of Physical Therapy Education (JoPTE) has been selected for inclusion in Web of Science, one of the world's most trusted



academic research databases.

This selection reflects the journal's commitment to the highest standards of editorial quality, rigorous peer review, and citation impact, benchmarks set by Clarivate. Importantly, this milestone is also a prerequisite for receiving a Journal Impact Factor, a widely recognized measure of a journal's influence in its field. Inclusion in Web of Science marks a significant step forward for JoPTE, greatly enhancing its visibility, credibility, and discoverability for educators and researchers around the world.

This achievement would not have been possible without the dedication of our Editorial Board members, authors, peer reviewers, and publishing team. We are deeply grateful for their ongoing commitment to advancing physical therapy education and education research.

We look forward to the exciting opportunities this milestone will bring for our authors and readers alike.

Volunteer for the Academy!

Contribute to the Academy of Education by becoming a volunteer! The following position terms that begin on July 1, 2026 are now available.



POSITIONS AVAILABLE:

- Webinar Committee
- Finance Committee

For more information on the positions, please review the Policies & Procedures manual or email volunteerscoordinator@aptaeducation.org.

Volunteer!

Emerging Leader Award

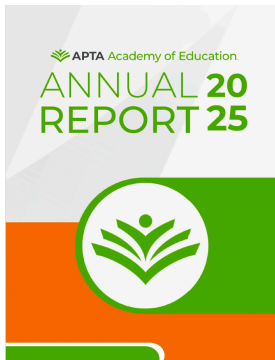


This recognition honors one emerging leader—either a physical therapist or physical therapist assistant—from each APTA component who has demonstrated exceptional service, leadership, and contributions early in their career. The selected individual will have significantly advanced the mission and vision of the American Physical Therapy Association, their component, and the physical therapy profession as a whole.

[Learn More](#)

[Submit Nomination](#)

2025 Annual Report



Discover what the APTA Academy of Education has been doing on your behalf in 2025!

[Read the report here](#)

CSM 2027 Call For Proposals

Call For Proposals

Submit Today



CSM 2027

Be sure to submit your session proposal by **April 15**, to be considered for next year's CSM meeting February 4-6, 2027 in Philadelphia, PA.

Submit Your
Proposal

[Click here](#) for Academy of Education-specific guidelines.

2026 Physical Therapy Faculty Development Workshop (PTFDW)

New to DPT or PTA faculty roles? *You don't have to figure it out alone.*

Join us in Chicago, July 31 - August 1 for the Physical Therapy Faculty Development Workshop, designed specifically for early-career faculty. These interactive sessions bring new faculty together with experienced faculty facilitators to explore real-world topics including navigating faculty roles and responsibilities, implementing evidence-informed instructional and assessment strategies, and maintaining a sustainable work-life balance.

You'll leave with practical tools, fresh ideas, and a growing professional network—plus post-workshop networking sessions to keep the conversation (and support) going long after the workshop ends.

Register!

2026 Physical Therapy Faculty Development Workshop

Thursday, July 30 -
Saturday, August 1

Northwestern
University's
Chicago Campus

Chicago, IL

Faculty Facilitators and Invited Speakers:

Dawn S. Brown, PT, DPT, EdD, OCS, Northwestern University
Christie Cohoon, PT, DPT, OCS, St. Louis Community College – Forest Park
Jeremy Houser, PT, DPT, PhD, OCS, Lincoln Memorial University
Myles Quiben, PT, DPT, PhD, MS, University of North Texas Health Science Center
Kirsten Potter, PT, DPT, Tufts University
Tricia Prokop, PT, EdD, CSCS, Bowling Green State University
Nikki Sleddens, PT, ABD, CEEAA, University of Nebraska Medical Center
Angela Wallace, PTA, McHenry County College

Workshop Goals:

1. Introduce novice faculty to established roles in the academy.
2. Facilitate professional growth of developing faculty members.
3. Cultivate a network of academic colleagues among workshop participants and facilitators.
4. Create a professional development plan incorporating elements of teaching, scholarship and service.
5. Design instructional activities and assessment methods that reflect contemporary best practices.
6. Examine the integration of cultural humility within the physical therapy curricula.

Focused Learning Opportunities:

1. Discussions on balancing responsibilities of teaching, research and service as the new faculty member acclimates to a role in higher education.
2. Applying core principles of teaching and learning, using best practices in course development, student assessments, and student engagement.
3. Fostering professionalism and coaching.
4. Focusing on the unique role of the Director of Clinical Education (DCE) as a member of the faculty team.
5. Individual or small group consulting opportunities with faculty facilitators during the workshop.
6. Post course synchronous networking and follow-up for

Simulation Networking Community Launches Monthly Chats

We are pleased to share the launch of SimChats! This monthly meeting is a dedicated space for AoE members with interest in simulation to connect, exchange ideas, and collaborate on best practices. Each session highlights current topics in simulation-based education, offers opportunities for members to share experiences or challenges, and fosters meaningful discussion across diverse roles and settings. Whether you are new to simulation or a seasoned expert, this gathering provides a supportive environment to learn, network, and strengthen our collective impact on healthcare education and patient outcomes.

We will discuss tools for building simulation scenarios and share a new scenario builder that the Simulation Networking Community has been working on.

We will also have an open forum to discuss your questions and ideas related to simulation-based learning.

Please join SimChats at **SimChats Zoom** :
Meeting ID: 947 3412 5901 Passcode: 751877

[SimChats Zoom](#)

Upcoming Meetings:

- **Thursday, March 5, noon EST**
- Thursday, April 9, noon EDT
- Thursday, May 7, noon EDT

Call for JoPTE Journal Club Committee Members!



Join the JoPTE Journal Club Committee!

We are seeking an enthusiastic physical therapy educator to join the Journal of Physical Therapy Education (JoPTE) Journal Club Committee. Committee members play a key role in transforming current JoPTE scholarship into dynamic online learning experiences by identifying timely article topics, inviting authors to present, organizing engaging webinar sessions, developing high-quality continuing education content, and contributing to innovative ideas that elevate PT education.

PTAs are encouraged to apply.

The JoPTE Journal Club Committee Member helps plan, coordinate, market, and deliver up to three virtual journal club sessions per year. Committee members collaborate on article selection, speaker outreach, session design, and live facilitation tasks to ensure high-quality, engaging professional development for PT/PTA educators and clinicians.

Committee members may rotate through functional roles (e.g., session moderator, marketing coordinator, chair) based on availability, interest, and committee needs.

Time Commitment: 1-2 meetings per month typically during the day.

Term: 3-years beginning in July 2026

Interested applicants should submit a CV and a brief letter of interest. This is a great opportunity to collaborate with colleagues, expand your scholarly impact, and support excellence in physical therapy education.

Applications due April 15, 2026. Send to [Jonathan Duellman](#).

Questions?

Contact: [Jonathan Duellman](#)

The Journal of Physical Therapy Education (*JoPTE*) Editorial Fellowship

Journal of

PHYSICAL THERAPY EDUCATION

The aim of the *JoPTE* Editorial Fellowship is to support education researchers and develop a cadre of peer reviewers and future Editorial Board members who bring diverse perspectives to the Journal.

About

This 12-month editorial fellowship offers early career physical therapy faculty the opportunity to learn about peer review, editing, publication decisions, and serving on an Editorial Board. The fellowship will offer hands on, practical experience and mentorship where fellows will work with the team at *JoPTE* to learn about the process of education research publication as well as the roles of the Editor-in-Chief and the Editorial Board. Fellows will attend monthly virtual meetings with the *JoPTE* team and will be invited to attend the *JoPTE* Editorial Board meeting held at the Combined Sections Meeting in 2027. There are virtual options for attendance. Fellows responsibilities will include assisting with the management of submissions, proofreading, and completing at least 6 mentored peer reviews over the course of the 12 month fellowship. Fellows will work with the Editor-in-Chief on screening manuscripts for appropriateness, identifying reviewers and then work with seasoned Editorial Board members on making decisions based on reviews, ultimately seeing accepted manuscripts through the publication process. Mentees will have the opportunity to co-author an Editorial at the end of the program.

The fellowship will run from June 1, 2026 to May 31, 2027.

Application Details

Criteria: Applicants must currently serve as physical therapy faculty members and need to meet the criteria to serve as a peer reviewer for JoPTE, having authored/coauthored at least 2 peer reviewed, published manuscripts. This fellowship experience will hopefully translate to increased success with article submission and publication and fellows may consider serving on an Editorial Board in the future.

If you are interested, please send your CV and a 500-word statement about why you would like to be an JoPTE Editorial mentee and your objectives for the program to JoPTEEditor@aptaeducation.org Be sure to tell us about the diverse perspective you will bring to JoPTE.

Applications are due April 30, 2026, decisions will be rendered in May, and appointments will begin in June 2026. We will interview select applicants and appoint up to 2 fellows for 2026-2027.

Congratulations Academy Grant and Award Winners!



The following members were recognized for their leadership and research at the Academy of Education's Annual Business Meeting February 13 in Anaheim, CA:

2026 AWARD WINNERS



REBECCA JOHNSON
ADOPT-A-DOC



LAUREN PLUM
ADOPT-A-DOC



LEAH VEREBES
ADOPT-A-DOC



MORRIS CASANO
BEATO
DISTINGUISHED EDUCATOR
IN PHYSICAL
THERAPIST EDUCATION



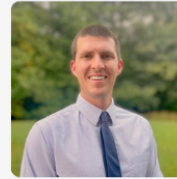
DEANNE YATES
DISTINGUISHED EDUCATOR
IN PHYSICAL THERAPIST
ASSISTANT EDUCATION



MEREDITH CHAPUT
DISTINGUISHED MENTOR IN
RESIDENCY/FELLOWSHIP
EDUCATION



MICHELE NEILS
OUTSTANDING SITE
COORDINATOR FOR CLINICAL
EDUCATION



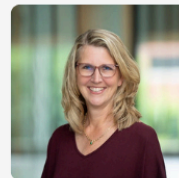
JAMES COBLE
OUTSTANDING CLINICAL
INSTRUCTOR



JENNIFER FURZE
AWARD FOR LEADERSHIP IN
EDUCATION



STEPHEN JERNIGAN
PAULINE CERASOLI
LECTURESHIP 2027



CHALEE ENGELHARD
PRESIDENT'S AWARD

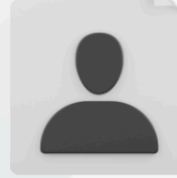
STANFORD AWARD



STEVEN AMBLER



TAMARA BURLIS



RUTH CLARK



GREGORY
HOLTZMAN



PATRICIA NAVARRO
MCGEE



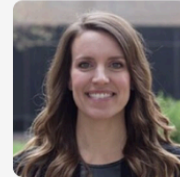
JODY FROST



JESSICA
RANDOLPH



BARBARA NORTON



CAREY HOLLERAN

FEITELBERG FOUNDER'S AWARD



DAWN BROWN



CHANDI EDMONDS



JAMES MOORE



SARAH FISHEL



MADELINE RATOZA

GRANTS



Mar 10 | [RFE SIG Journal Club](#)

8:00 PM - 9:00 PM EDT

Register

Mar 19 | [AESIG Journal Club: Current State of Anatomy in DPT Programs](#)

7:30 PM - 8:30 PM EDT

Register

Save The Date

Jun 9 | [RFE SIG Journal Club](#)

8:00 PM - 9:00 PM EDT

Sep 8 | [RFE SIG Journal Club](#)

8:00 PM - 9:00 PM EDT

Dec 8 | [RFE SIG Journal Club](#)

8:00 PM - 9:00 PM EST

SIG SPOTLIGHT

Interprofessional Education and Practice (IPEP) SIG

The Interprofessional Education and Practice Special Interest Group shall serve as a resource and forum for members of the Academy who value and champion interprofessional education (IPE) and collaborative practice (IPCP) in all facets of the physical therapy profession.

Objectives:

- Foster networking and collaboration among physical therapists and physical therapist assistants interested in IPE and IPCP
- Engage in initiatives that support IPE and IPCP innovation in physical therapist and physical therapist assistant education
- Foster a culture of innovation, intellectual engagement, and leadership in the Academy of Education to support IPE and IPCP endeavors
- Facilitate excellence in IPE education through collaboration with external IPE organizations
- Disseminate information related to interprofessional collaborative practice to the physical therapy community in coordination with the Academy of Education.

Leadership:

Chair: Kimberly Beran-Shepler

Vice Chair: Myles Quiben

Secretary: Laura Gras

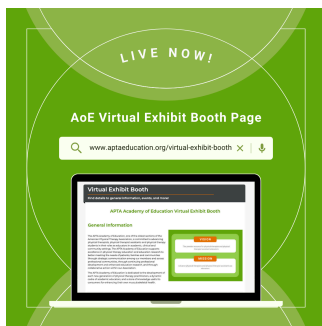
Professional Development Committee Chair: Sally McCormack Tutt

Scholarly Endeavors Committee Chair: Shelene Thomas

Communications Committee Chair: Cheryl Babin

Nominating Committee Chair: Leah Lowe

QUICK CLICKS



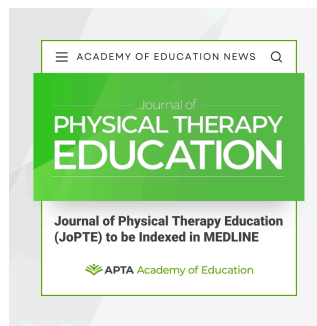
Check out our
Virtual Exhibit Booth!

[Learn More](#)



Participate in your
Colleagues' Research

[Learn More](#)



Journal of Physical
Therapy Education

[Learn More](#)

Never miss the
APTA Academy of Education Newsletter

[Learn More](#)

CLASSIFIEDS

Find your next career opportunity on our classified page.

[Search Jobs](#)

[Post Jobs](#)

CURRENT LITERATURE

Check out the latest information and trends in physical therapy educational research on the JoPTE website and follow @JOPTEjournal on Facebook, Twitter, and Instagram to keep up with newsworthy educational content and publications!

[Read Journal](#)

STAY CONNECTED

Stay Connected By Following
APTA Academy of Education's Social Media Pages

#APTAAcademyofEducation



APTA Academy of Education | 2900 Delk Road Suite 700, PMB 321 | Marietta, GA 30067 US

[Unsubscribe](#) | [Update Profile](#) | [Constant Contact Data Notice](#)



Try email marketing for free today!