



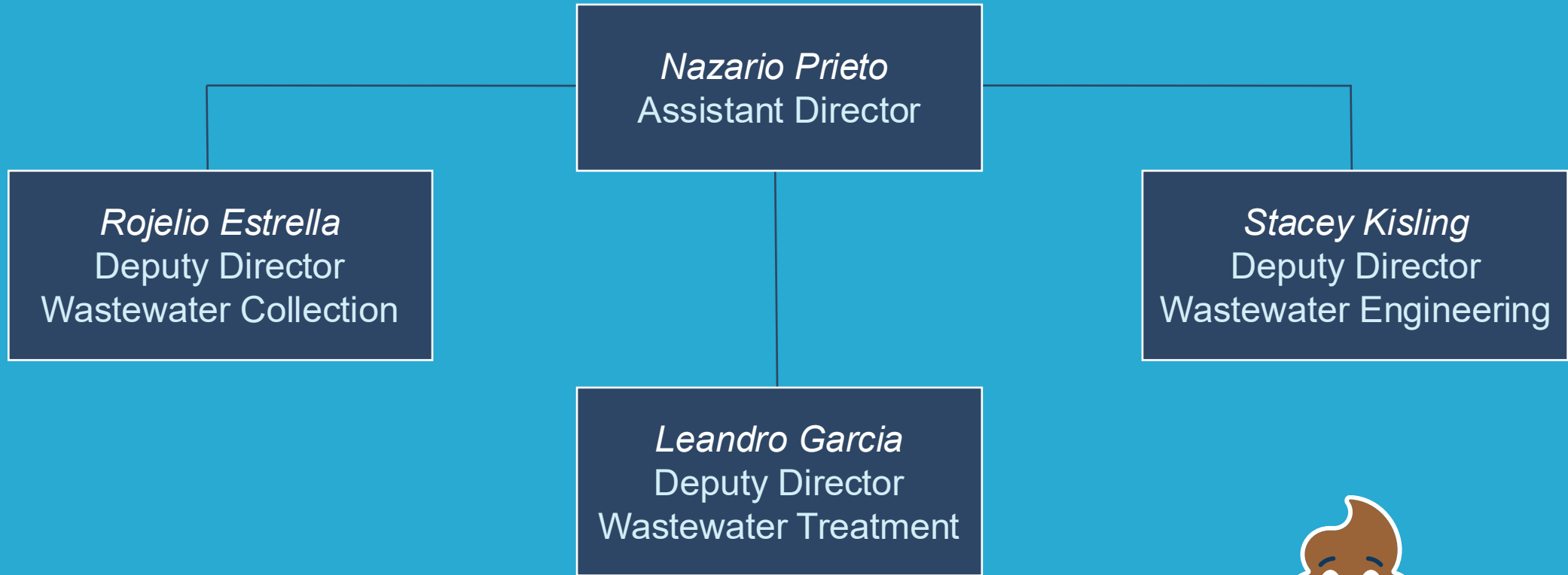
PHX
WATER
SMART

CITY OF PHOENIX WASTEWATER UTILITY

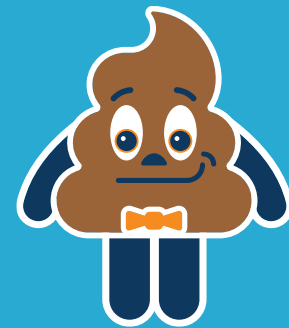
Stacey Kisling, P.E.

April 21, 2026

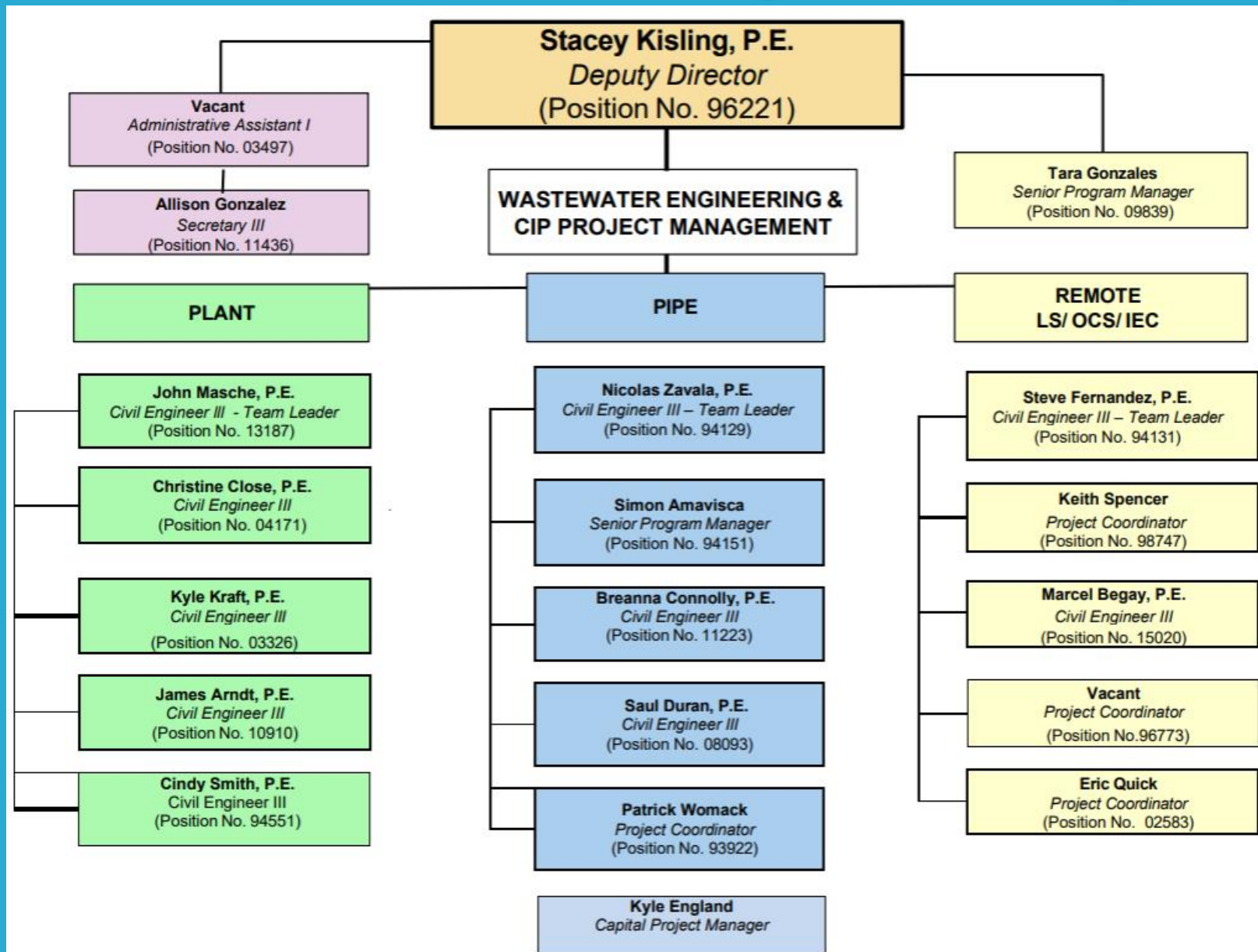
Wastewater Utility



PHX WATER SMART



Wastewater Engineering



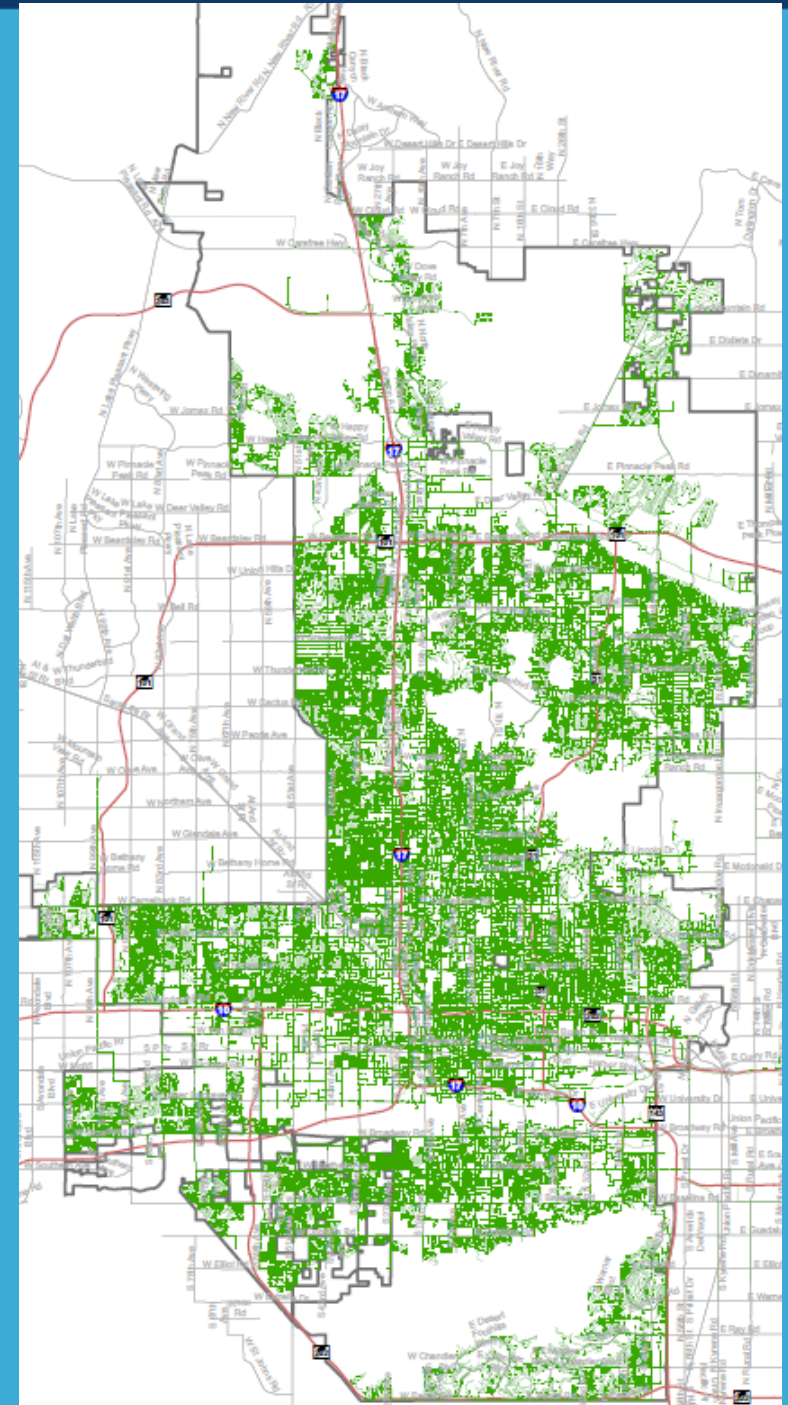


Wastewater Utility Overview

- 315 Full-time Employees
- 5,114 Miles of sewer mains
- 2 Treatment plants (293 MGD Capacity)
- 1 Reclamation Plant (8 MGD Capacity)
- 30 Lift stations (0.5 to 13 MGD)
- 25 Odor Control Stations
- 100,189 Manholes
- 18 Sewer basins (192 sub-basins)
- 70 Billion Gallons of Reclaimed water produced for:
 - Cooling water purposes at the Palo Verde Nuclear Generating Station
 - Irrigating of non-edible crops
 - Potable water exchange (RID Exchange)
 - Wildlife and ecosystem restoration (Tres Rios Wetlands)

Gravity Collection System

- 5,114 Miles of Sewer Mains
- 100,189 Manholes
- Programs:
 - Small Diameter Sanitary Sewer/ Manhole Rehab
 - Large Diameter Sewer – Phoenix
 - Large Diameter Sewer – Multi-City
 - Relief Sewer



PHX WATER SMART

Small Diameter Sanitary Sewer/ Manhole Rehab

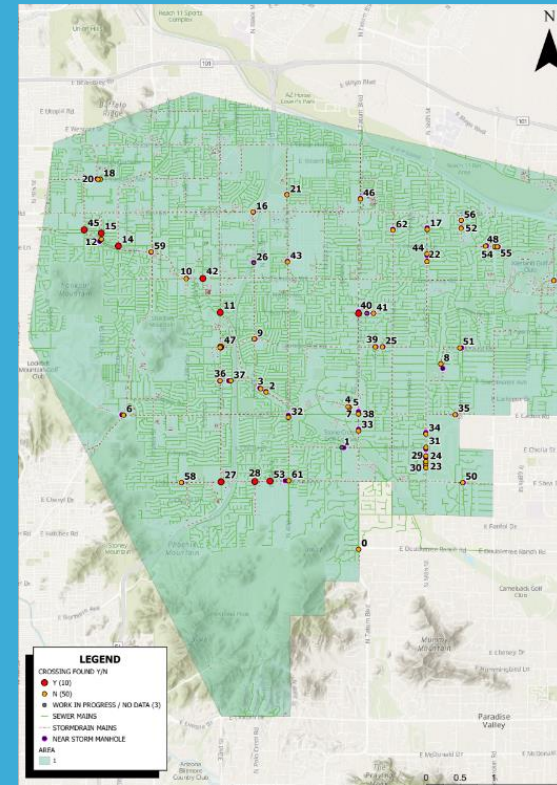
- Small diameter pipe: 4,760 miles (under 15")
- FY25-26 accomplishment:
 - Assessed over 1M-LF pipe (190 miles)
 - Rehab 255,000-LF pipe (48 miles)
 - Rehab 288 manholes



Small Diameter Sanitary Sewer/ Manhole Rehab



FRP (Fiber Reinforced Polymer for exterior protection of sewer crossing storm drains)

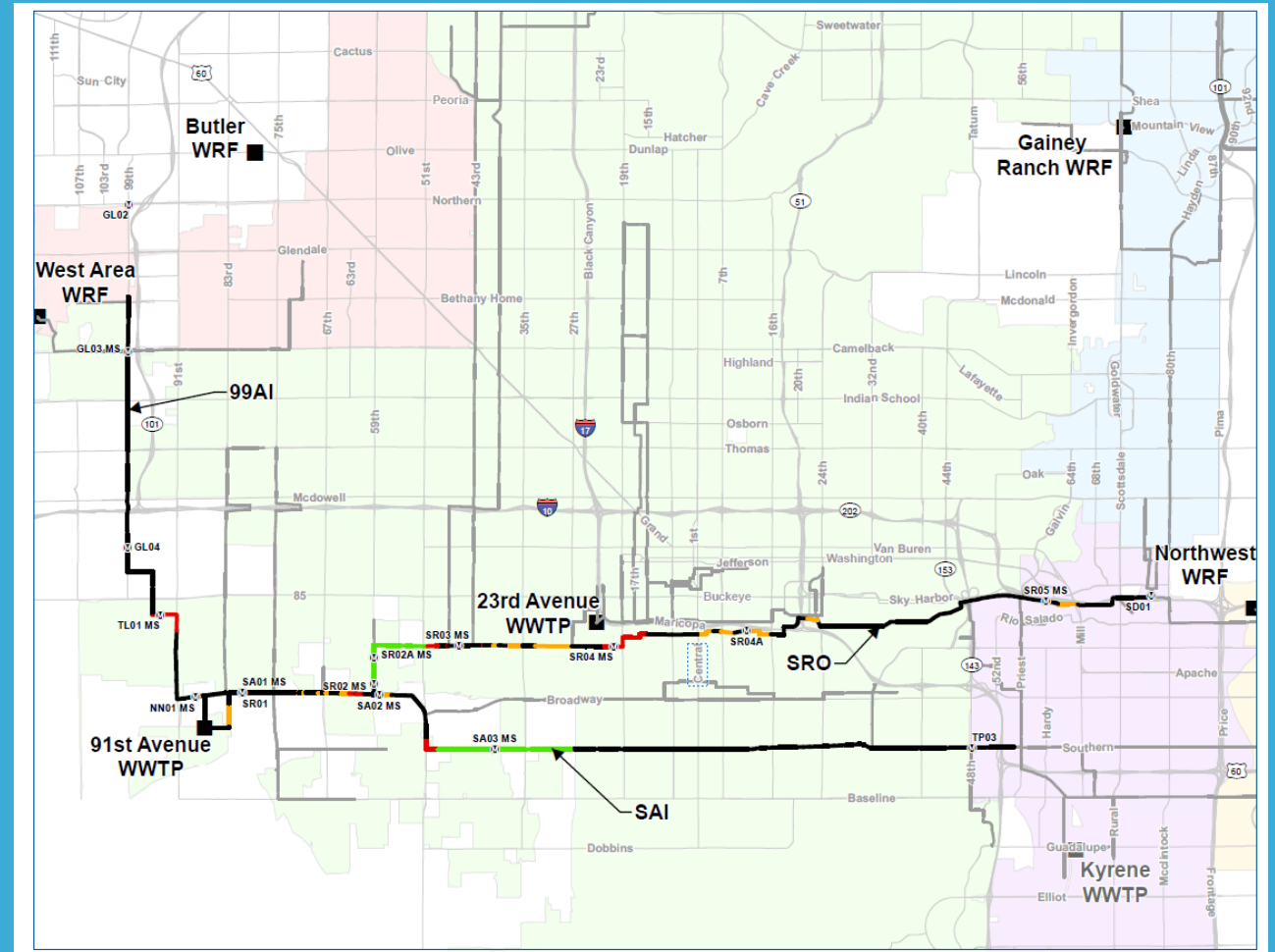


Partial completion of Sanitary Sewer and Storm Drain Crossing Assessments

PHX WATER SMART

Large Diameter Sewer – Multi-City

- Salt River Outfall (SRO)
 - 23 miles
 - Pipe size: 54- to 90-inch
- Southern Avenue Interceptor (SAI)
 - 19 miles
 - Pipe size: 48- to 90-inch
- 99th Avenue Interceptor
 - 13 miles
 - Pipe size: 36- to 84-inch



SROG Sanitary Sewer Pipe Alignments

PHX WATER SMART

Large Diameter Sewer – Phoenix

- CIPP-Lined Concrete Sanitary Sewer
- PVC-Lined Concrete Sewer
- Large Diameter Clay Sewer
- Large Diameter DIP Sewer



CCTV Inspections

PHX WATER SMART

Relief Sewers – Phoenix

- 35th Avenue & Osborn Road Relief Sewer
- Van Buren Relief Sewer – 48th Street to Loop 202
- ACDC & 19th Avenue Sewer Relief
- Northern Avenue Sewer Relief
- Sweetwater Avenue Sewer Relief
- Cholla Lane Sewer Diversion & Abandonment



Trenching for a New Sewer Line

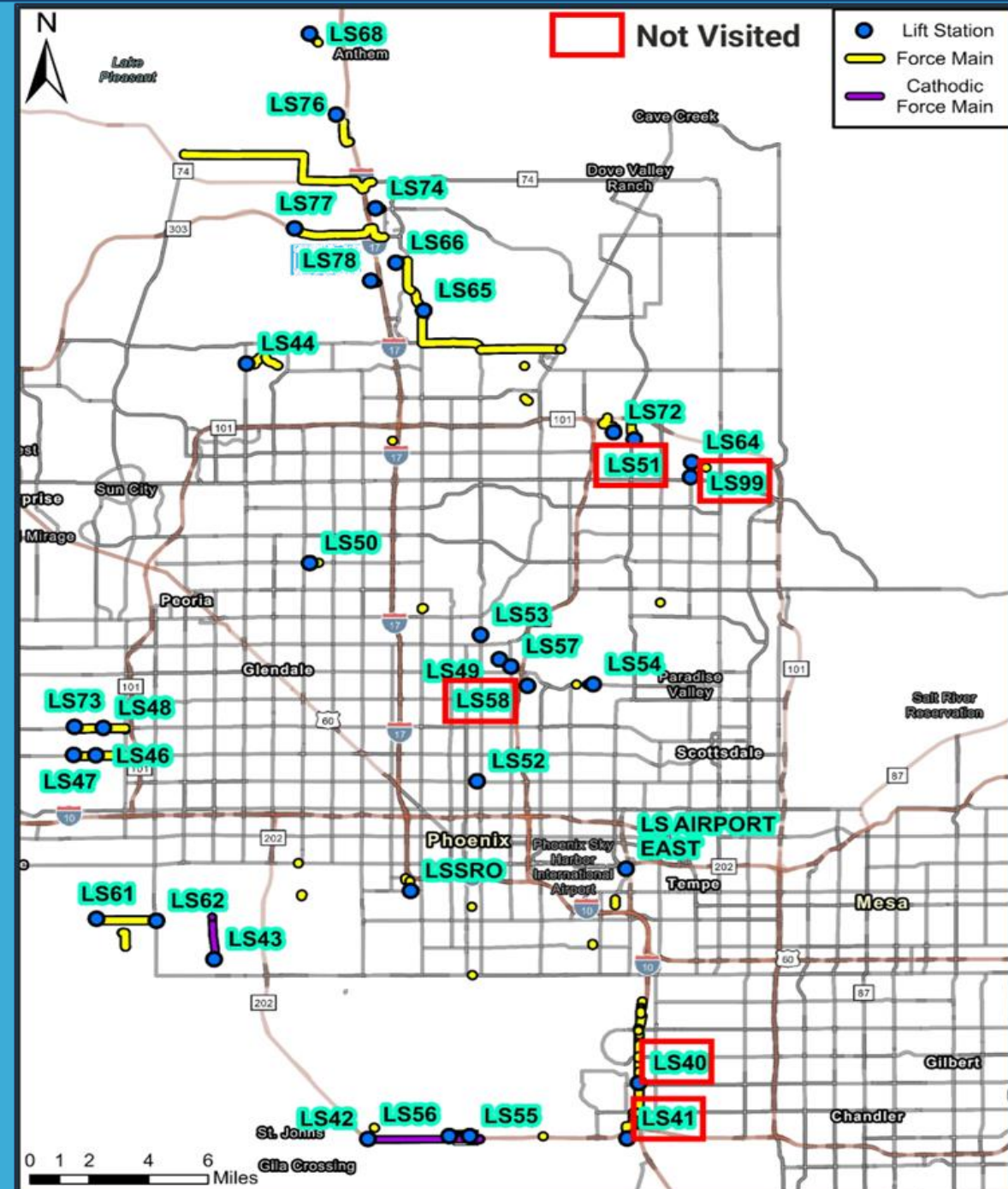
Gravity Collection System Upcoming Work

- FY25-26
 - WS90500118/WS90500299: Small Diameter Sewer/Manhole Rehabilitation CA&I
 - WS90500323: 51st Avenue Lake Pleasant WTP Gravity Pipeline Design
- FY26-27
 - WS90500271: CIPP-Lined Sewer Design
 - WS90500301: Large Diameter DIP CA&I
 - WS90500303: 35th Avenue & Osborn Road Relief Sewer CA&I
- FY27-28
 - SAI Projects 5-8 Design
 - SRO Design
 - WS90500272: PVC-Lined Concrete Assessments

PHX WATER SMART

Remote LS/OCS/IEC

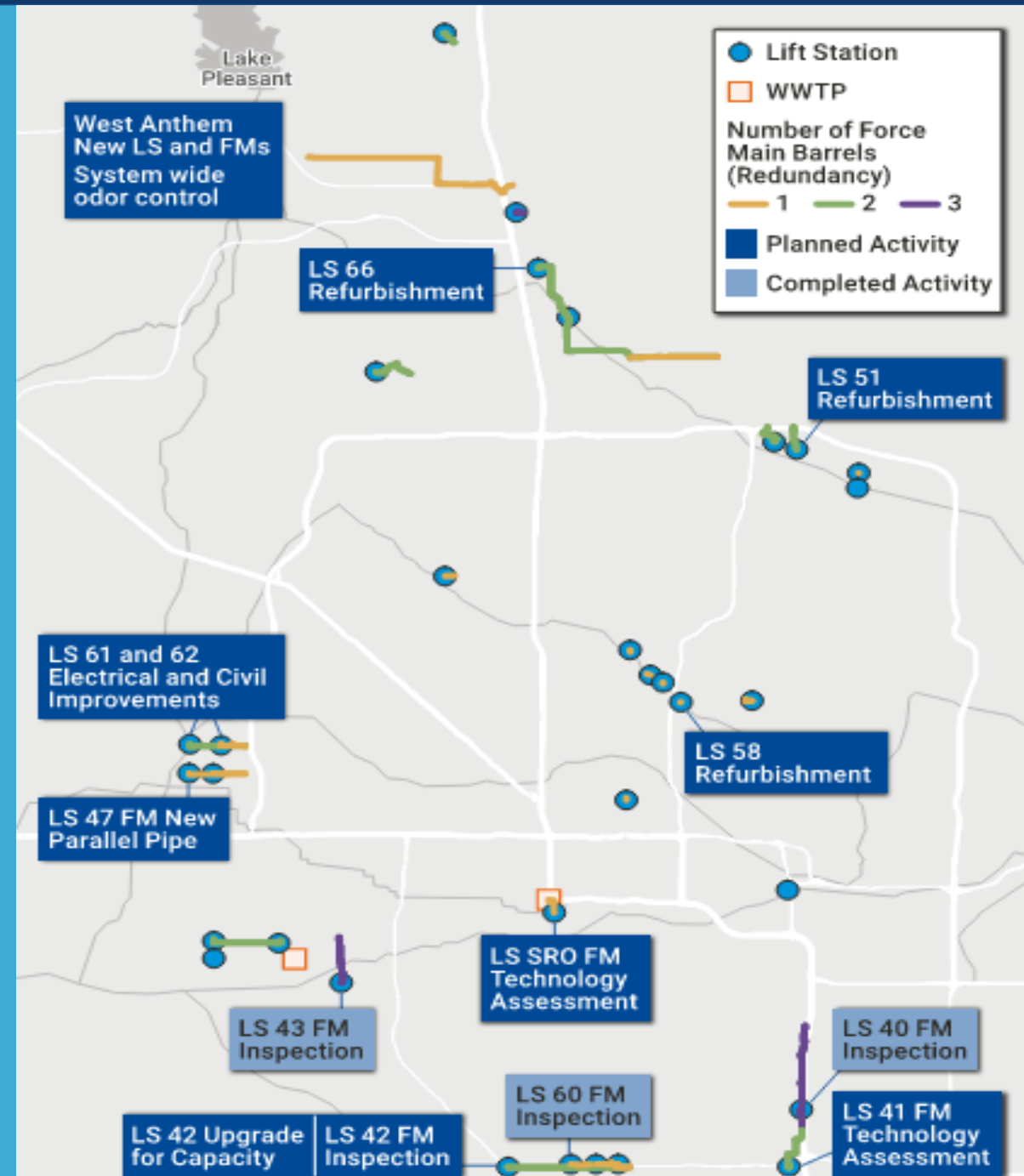
- Lift Stations and Force Mains
 - Civil, Mechanical, Hydraulic, Electrical and I&C, Odor Control, & Security and Network
- Professional & Construction Services
 - Assessment, Study, Design and Construction Administration & Inspection Services
 - CMAR, DBB, JOC Project Delivery Methods



PHX WATER SMART

Lift Station & Force Mains

- Projects identified on a yearly basis
- Projects are funded based on criticality and other factors
- Some examples of previous projects and projects that have not yet been authorized or funded



PHX WATER SMART

Lift Stations & Force Mains – Ongoing Work



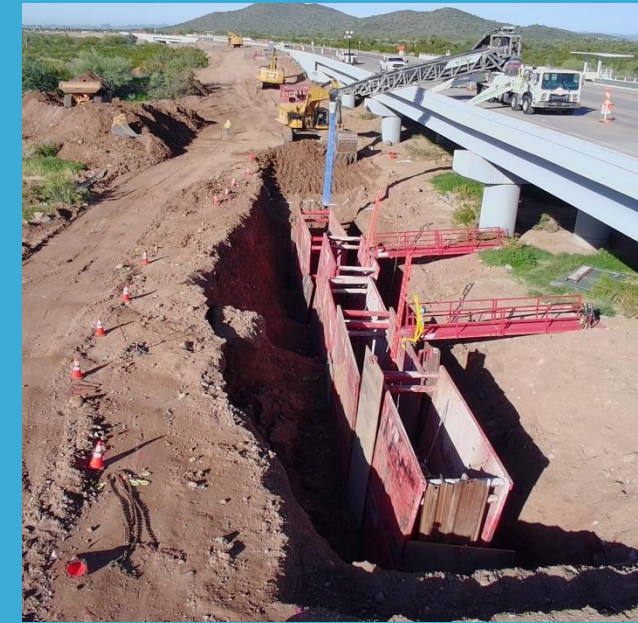
51st Avenue Gravity Sewer
– Construction Services



Lift Station 40 Refurbishment
– Electrical Building Conduit -
Construction Services



Lift Station 73 – New Biofilter
Installation – Construction
Services



Lift Station 80 – New FM
Install – Inspection Services

Lift Stations & Force Mains – Upcoming Work

- FY26-27
 - WS90501000: Lift Station 47 Redundant Force Main (Construction & CA&I)
 - WS90400023: Lift Station 44 Civil & Electrical Improvements (Construction & CA&I)
- FY27-28
 - WS90400023: Lift Station 65 Civil & Electrical Improvements (Construction & CA&I)
 - WS90400023: Lift Station 68 Civil & Electrical Improvements (Construction & CA&I)
 - WS90501000: Lift Station 42 Force Main Improvements (Construction & CA&I)
 - WS90400023: Lake Pleasant Lift Station Upgrades & Force Main Improvements (Design)

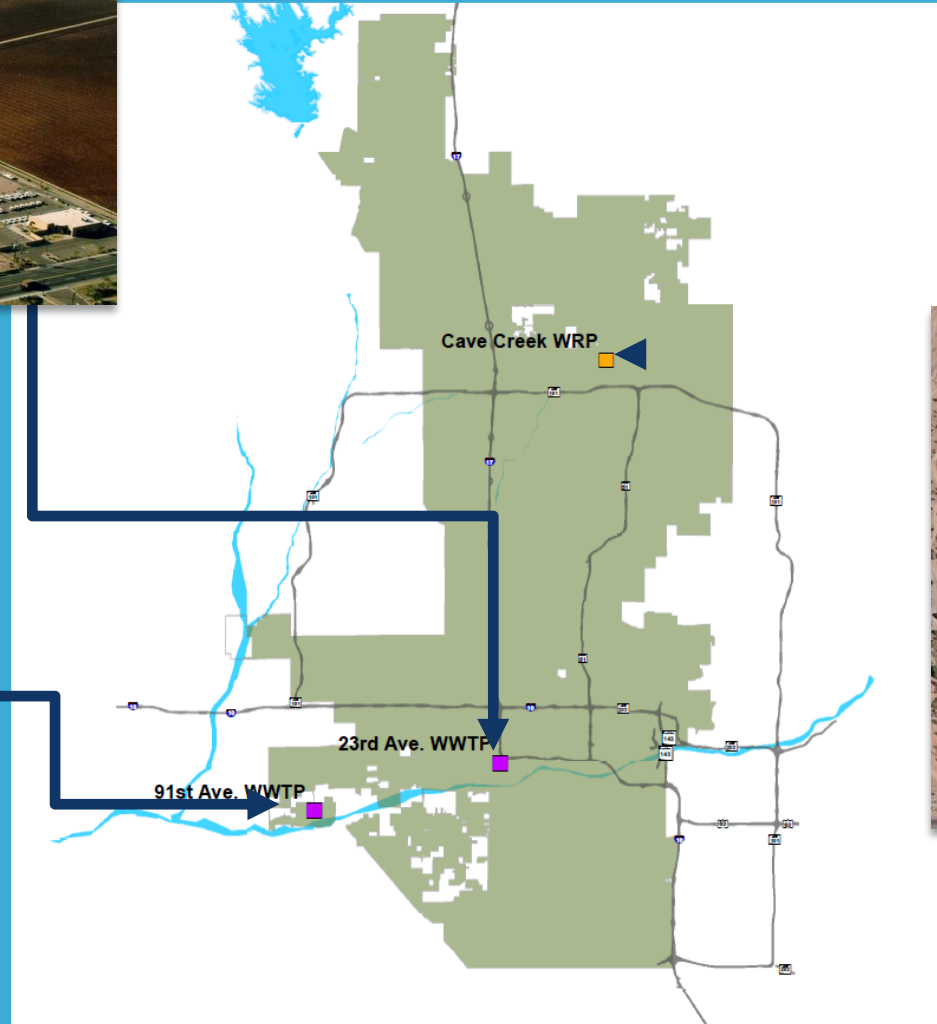
Wastewater Treatment Plants



23rd Avenue WWTP
(Built in 1932)



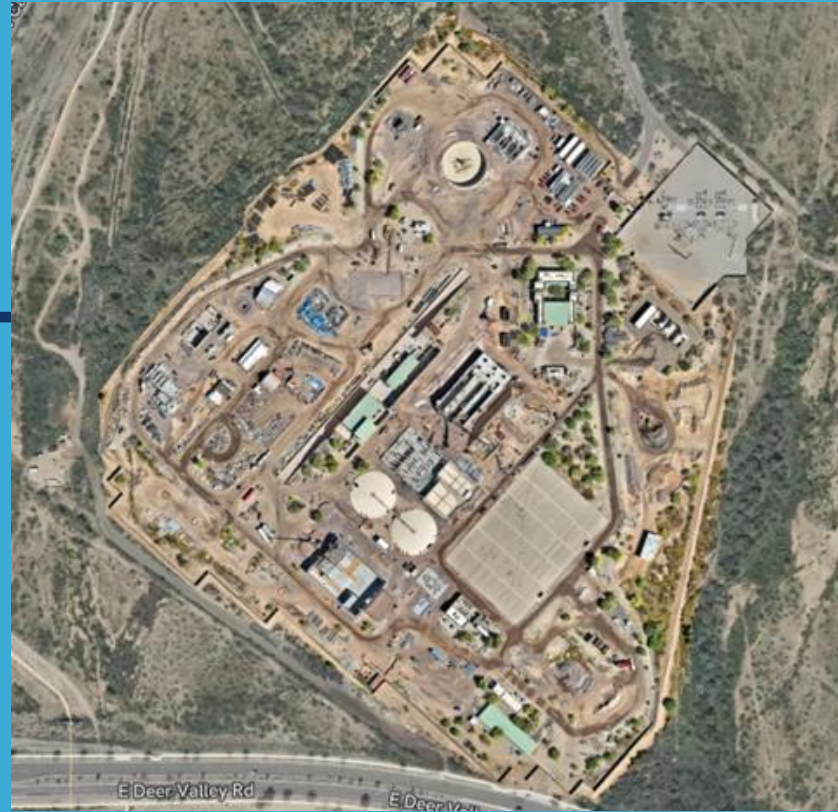
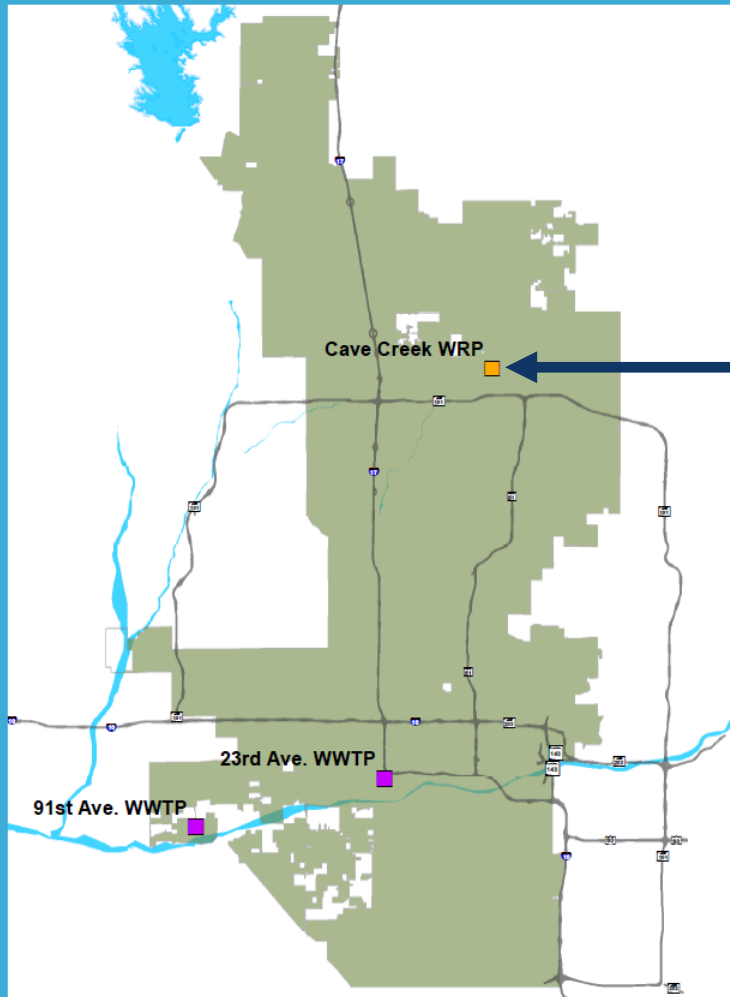
91st Avenue WWTP
(Built in 1958)



Cave Creek WRP
(Built in 2000, currently being rehabilitated)

PHX WATER SMART

Cave Creek WRP Program

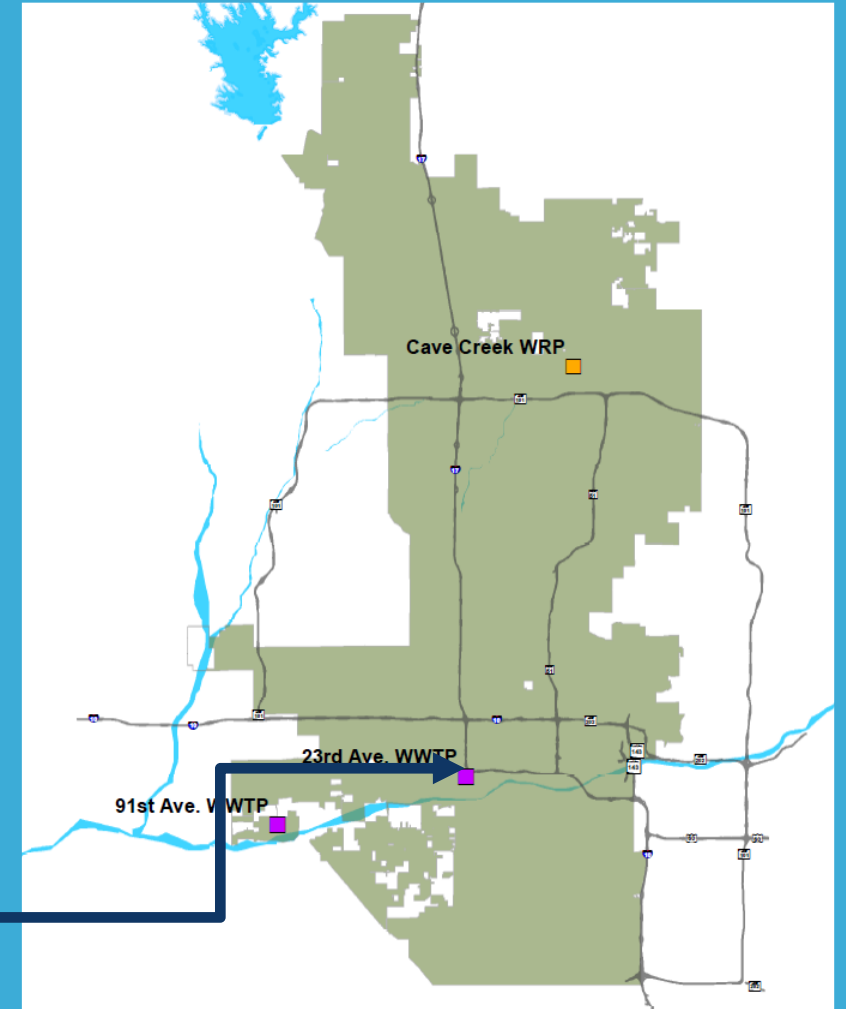


- Originally Constructed in 2000
- Taken Offline in 2009
- Rehabilitation Project - 2024 through 2027
- AWP Improvements through 2028
- AWP Permitting/Demonstration through 2029

PHX WATER SMART

23rd Avenue WWTP Program

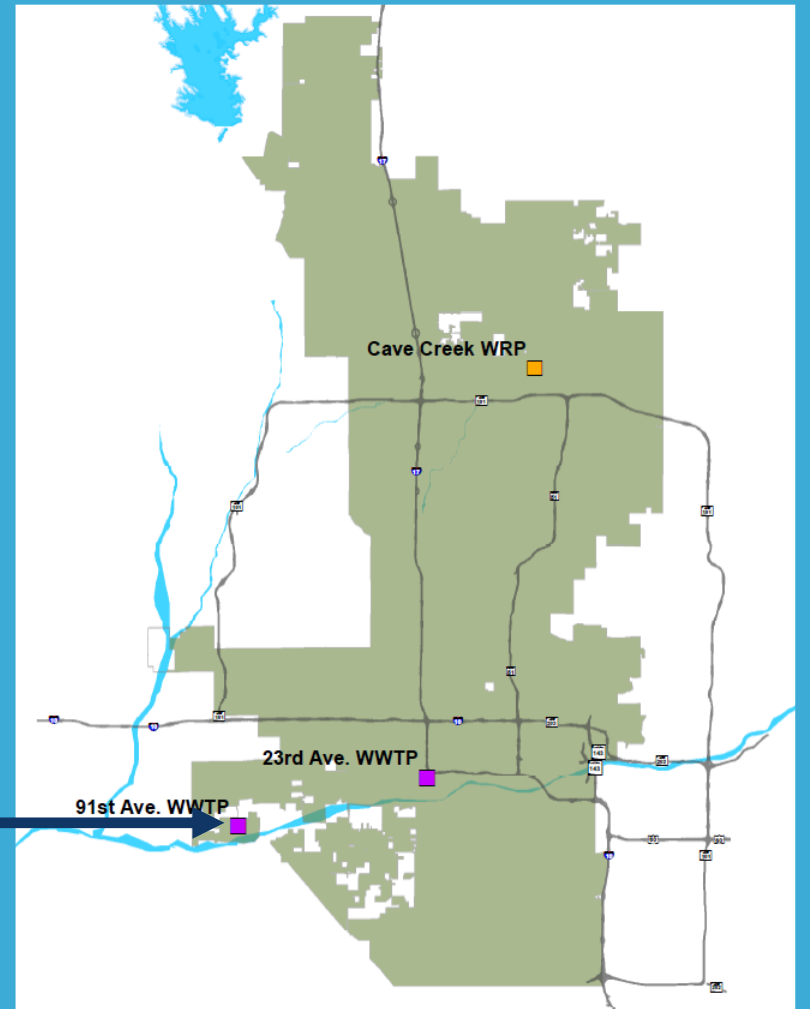
- Originally Constructed in 1932
- Modified & Expanded Capacity to 63 MGD
- Currently treats 52 MGD
- Ongoing Programs to Maintain the Facility
- Master Plan



PHX WATER SMART

91st Avenue WWTP Program

- Originally Constructed in 1958
- Modified & Expanded Capacity to 230 MGD
- Currently treats ~150 MGD
- Ongoing Programs to Maintain the Facility
- Master Plan Completed & Ongoing Assessments
- Several Major Rehabilitation Projects



Wastewater Treatment Plants – Upcoming Work

- FY26-27
 - WS90100001: 91st Avenue WWTP JOC Support Services
 - WS90100092: 91st Avenue WWTP Electrical, Instrumentation & Control Services
 - WS90100101: 91st Avenue WWTP Piping Assessment
 - WS90100120: 91st Avenue WWTP Aeration Rehabilitation
 - WS90200062: 23rd Avenue WWTP Filter Basin Rehabilitation
- FY27-28
 - WS90100118: 91st Avenue WWTP Plant 1B Rehabilitation

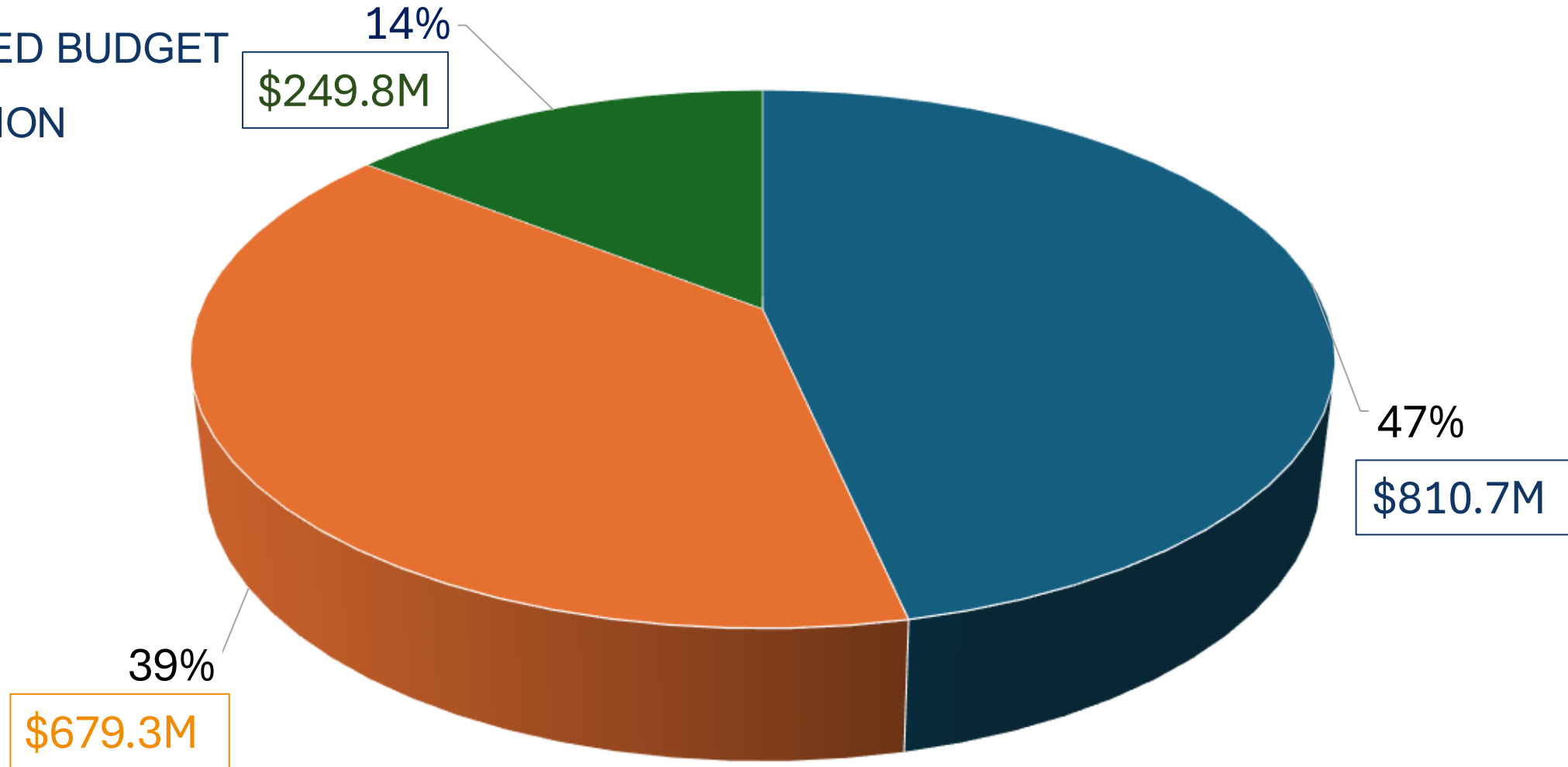
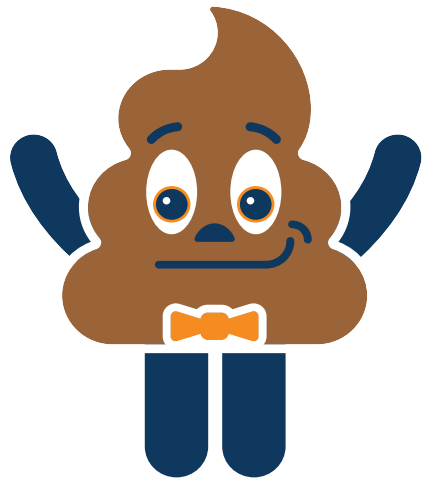
Wastewater CIP

5-YEAR PROJECTED BUDGET

\$1.73 BILLION



PHX WATER SMART



■ WWTP

■ Collection System

■ Remote LS/OCS/IEC



Questions???